



SOUTHTREE
COMMERCIAL
REAL ESTATE

FOR LEASE

1000 COMMERCE DRIVE, PEACHTREE CITY, GA 30269

MEDICAL OFFICE SPACE | 4,388 +/- SF Available



Property Details

- Rare opportunity in the heart of Peachtree City
- Located in Westpark Office Park near SR 74 SR 54 intersection
- 2nd Generation Medical Office Space
- 4,388 Rentable Square Feet
- 11 Exam Rooms with Sinks
- Inquire for Lease Rate

THIS INFORMATION HAS BEEN SECURED FROM SOURCES WE DEEM RELIABLE, BUT WE MAKE NO REPRESENTATIONS OR WARRANTIES, EXPRESSED OR IMPLIED AS TO THE ACCURACY OF THE INFORMATION.

 STCOM.US

 770-631-0499

 201 PROSPECT PARK, SUITE A,
PEACHTREE CITY, GA 30269

BARRY GARNER
COMMERCIAL AGENT
770-294-4027
BGARNER@STCOM.US



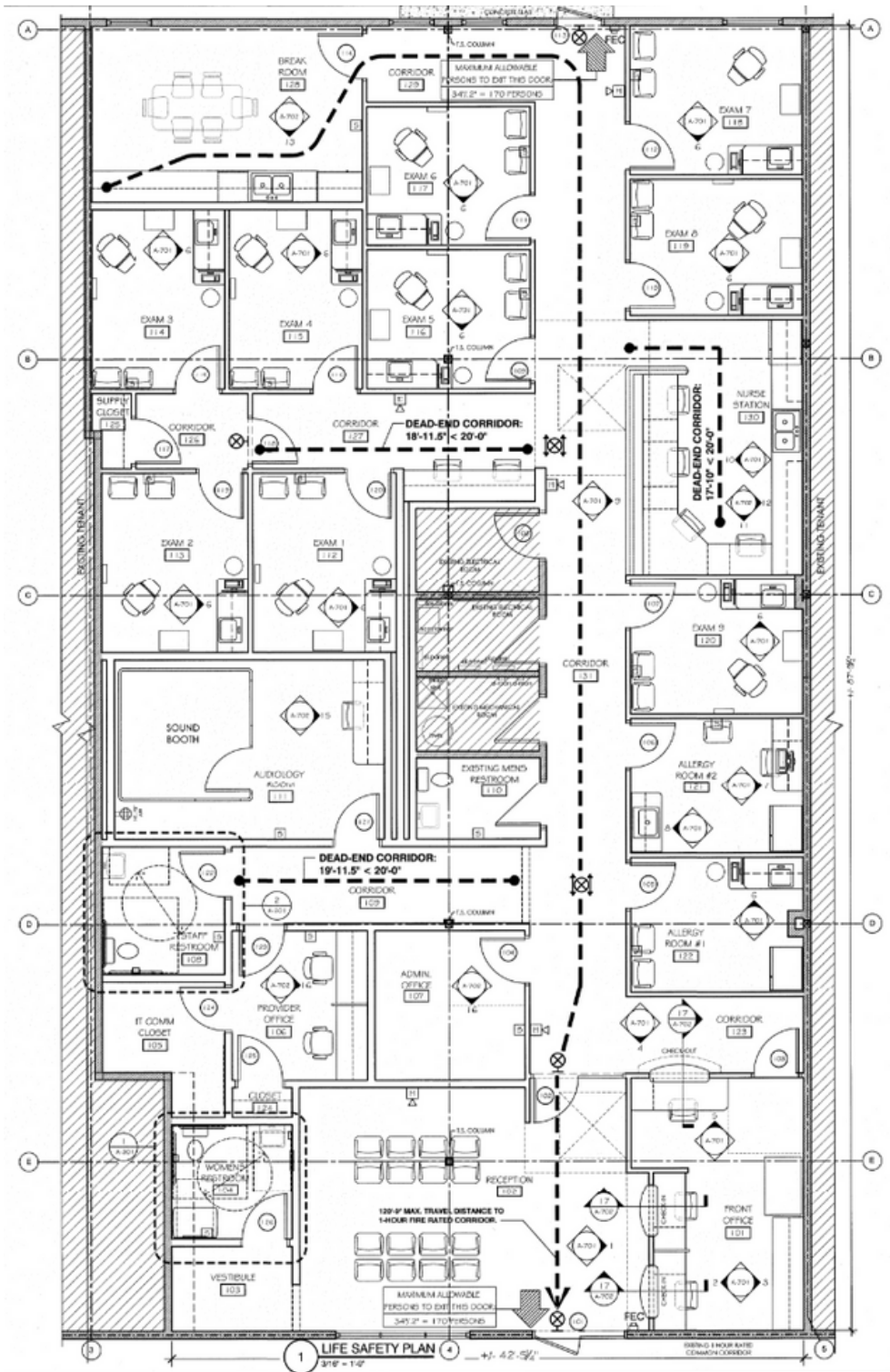
SOUTHTREE
COMMERCIAL

REAL ESTATE

FLOOR PLAN

1000 COMMERCE DRIVE, PEACHTREE CITY, GA 30269

MEDICAL OFFICE SPACE | 4,388 +/- SF Available



THIS INFORMATION HAS BEEN SECURED FROM SOURCES WE DEEM RELIABLE, BUT WE MAKE NO REPRESENTATIONS OR WARRANTIES, EXPRESSED OR IMPLIED AS TO THE ACCURACY OF THE INFORMATION.

STCOM.US

770-631-0499

201 PROSPECT PARK, SUITE A,
PEACHTREE CITY, GA 30269

BARRY GARNER
COMMERCIAL AGENT
770-294-4027
BGARNER@STCOM.US