

Fountain Row Office Condo

115 Manning Drive SW Ste B201 | Huntsville, AL 35801

FOR LEASE

OFFICE CONDO



Offering Summary

Lease Rate:	\$18.00 SF/yr (MG)
Available SF:	± 1,200 SF
Building Size:	20,610 SF
Suite Availability:	Spring 2025
Zoning:	R2

Property Description

This professional office condo in Twickenham, located just steps from downtown Huntsville, is an ideal space for various businesses such as professional services, healthcare providers, or small companies. The office is situated in a highly accessible location, making it easy to walk to nearby services, restaurants, and retail shops.

Property Highlights

- Walking distance to Downtown, Big Spring Park, Twickenham Square, and the new Federal Courthouse
- Two usable balconies
- Ample surface parking

Jim Smoot
Associate Broker
(256)-533-0003
jim@samplesproperties.com



Fountain Row Office Condo

115 Manning Drive SW Ste B201 | Huntsville, AL 35801

FOR LEASE

OFFICE CONDO



Jim Smoot
Associate Broker
(256)-533-0003
jim@samplesproperties.com

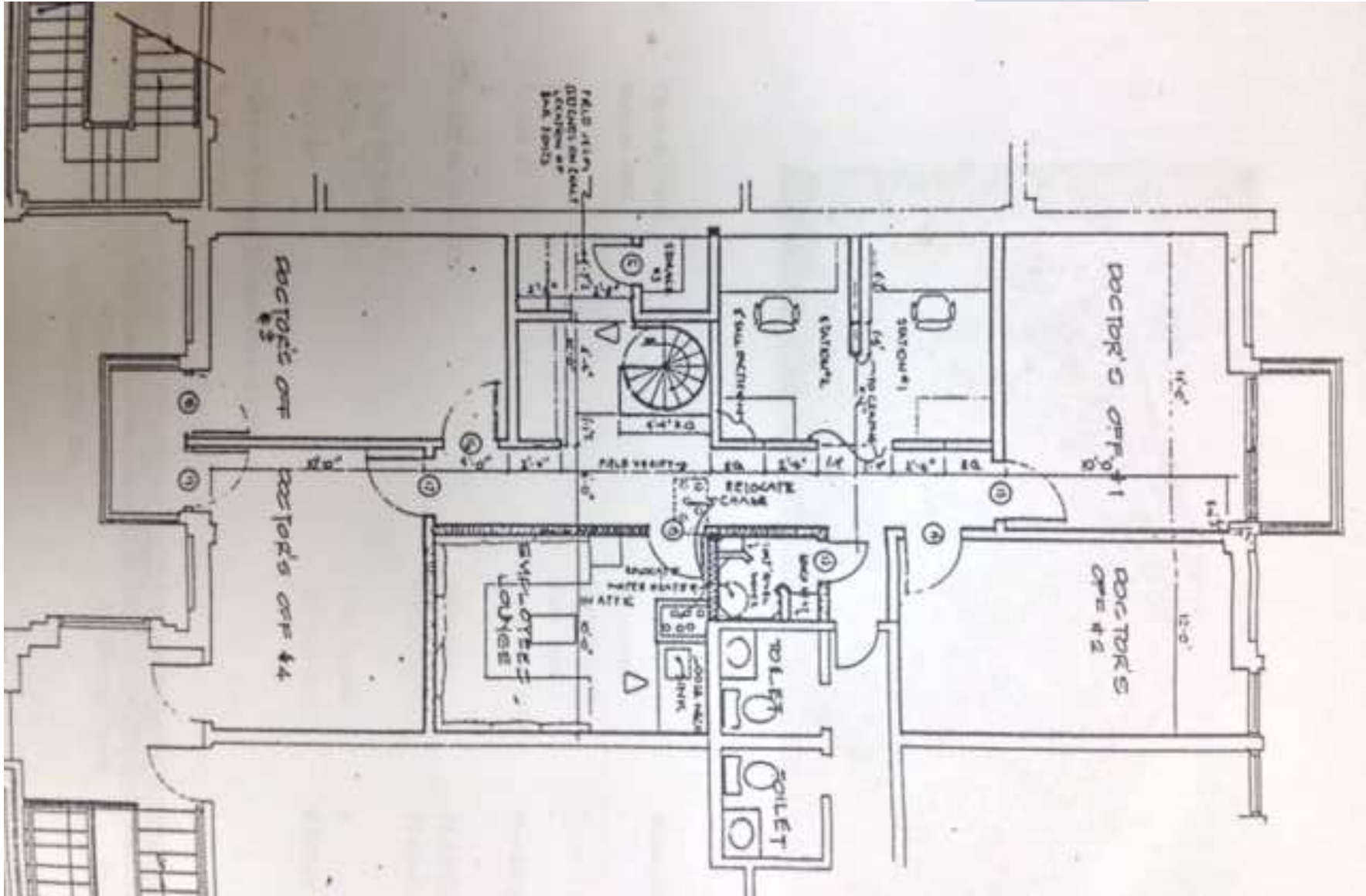


Fountain Row Office Condo

115 Manning Drive SW Ste B201 | Huntsville, AL 35801

FOR LEASE

OFFICE CONDO



****Modifications have been made since this version was created, and it may differ from the current floor plan****

Jim Smoot
Associate Broker
(256)-533-0003
jim@samplesproperties.com

