

# HIGHLY VISIBLE MEDICAL MIXED-USE BUILDING FOR SALE

IDEAL FOR  
PROFESSIONAL  
OR MEDICAL  
OFFICE USERS  
OR INVESTOR



## 111 EAST MAIN STREET MAPLE SHADE, NJ

**Corey Hassman**  
Senior Advisor  
856.261.5812  
corey.hassman@wolfcre.com



The foregoing information was furnished to us by sources which we deem to be reliable, but no warranty or representation is made as to the accuracy thereof. Subject to correction of errors, omissions, change of price, prior sale or withdrawal from market without notice.



**Wolf Commercial Real Estate**  
[www.WolfCRE.com](http://www.WolfCRE.com)



## PROPERTY DESCRIPTION

**Location:** 111 East Main Street  
Maple Shade, NJ 08052

**Size/SF:** +/-2,763 SF

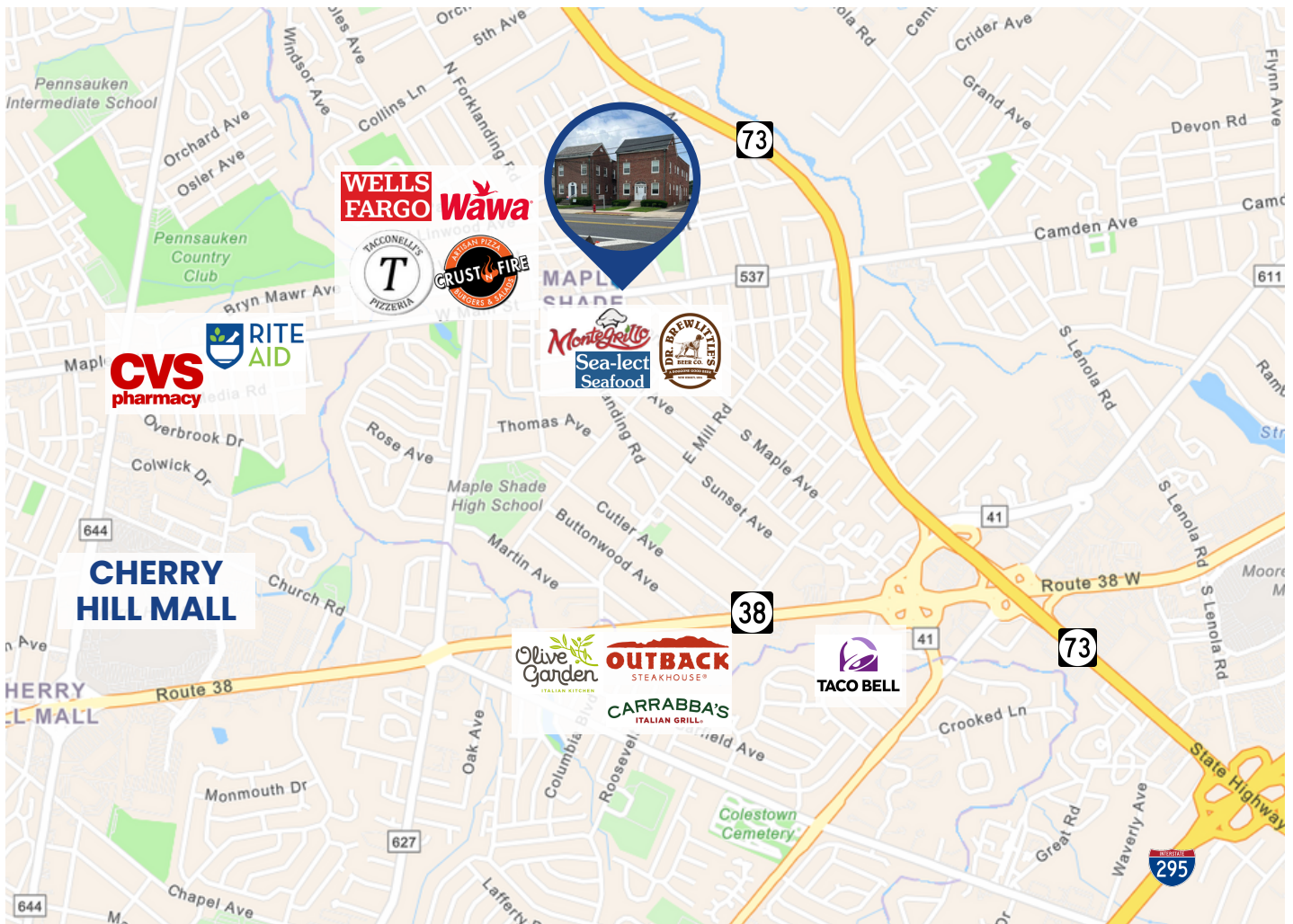
**Sale Price:** Call for information

**Signage:** Pylon Signage

## PROPERTY AREA/HIGHLIGHTS

- Ideal for investor, professional or medical office users
- Fit-out medical office on first floor
- Two income producing apartments on second floor with private entrances
- Off-street parking (6 spaces)
- Four exam rooms with reception area
- Easy access to Routes 73 and 38
- Two miles from Cherry Hill Mall
- Near various retailers and restaurants
- Public transportation Bus 407 & 417 out front of neighboring building

## AERIAL MAP

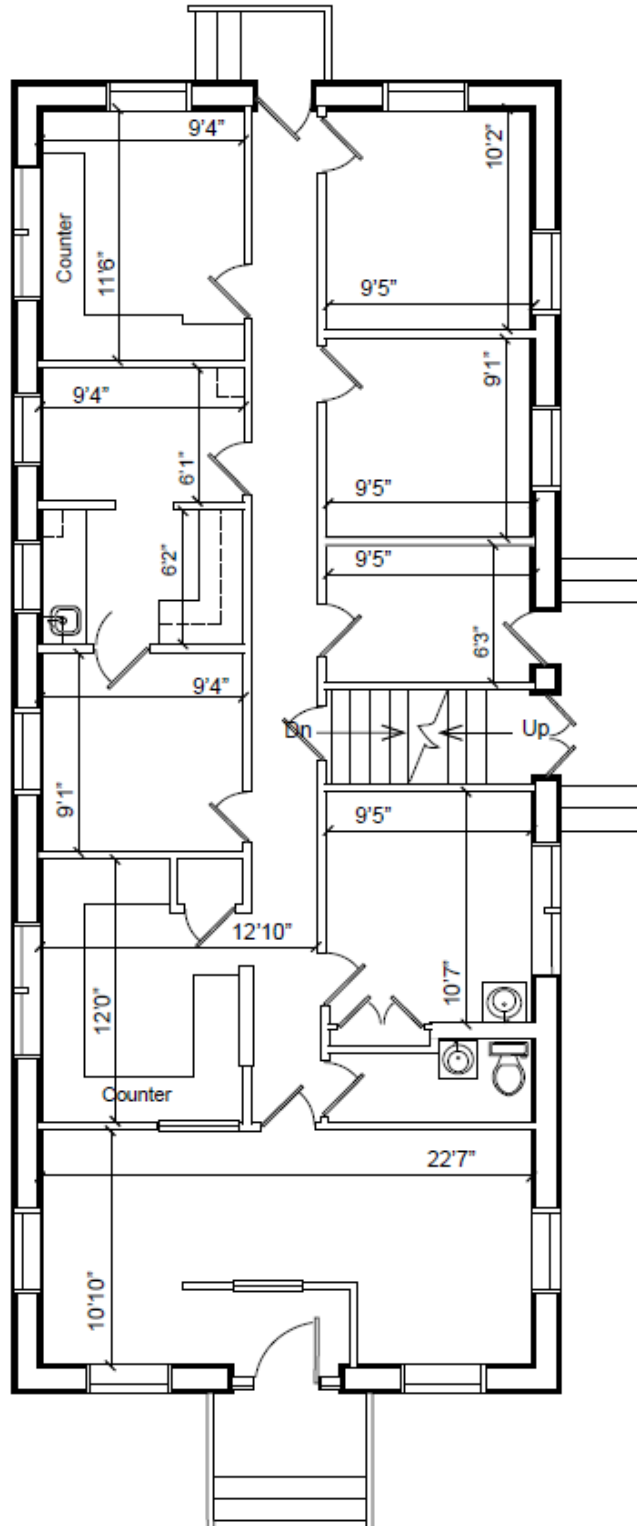


The foregoing information was furnished to us by sources which we deem to be reliable, but no warranty or representation is made as to the accuracy thereof. Subject to correction of errors, omissions, change of price, prior sale or withdrawal from market without notice.



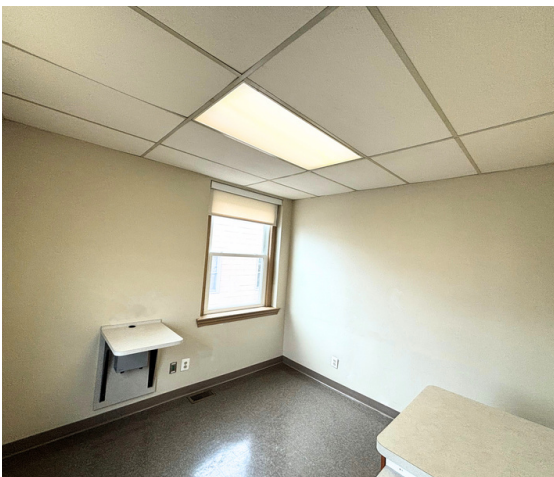
**FLOOR PLAN**

FIRST FLOOR  
1,500 SF



The foregoing information was furnished to us by sources which we deem to be reliable, but no warranty or representation is made as to the accuracy thereof. Subject to correction of errors, omissions, change of price, prior sale or withdrawal from market without notice.

**ADDITIONAL PHOTOS**



The foregoing information was furnished to us by sources which we deem to be reliable, but no warranty or representation is made as to the accuracy thereof. Subject to correction of errors, omissions, change of price, prior sale or withdrawal from market without notice.