

AVAILABLE



Buckingham Centre

2,000 - 4,500 RSF
\$38.00/RSF plus NNN
6420 Bee Cave Road,
Austin, Texas

**McALLISTER
& ASSOCIATES**
REAL ESTATE SERVICES

Summary

AVAILABLE:

2,000 - 4,500 RSF

USES:

Medical Office or
General Office.

LEASE RATE:

\$38.00/RSF plus NNN

JOIN TENANTS:

- Buckingham Center
for Facial Plastic
Surgery
- Iron Bridge Private
Wealth

LOCATION:

Quarter mile from Loop 360 on Bee Cave Road. Directly next to County Line BBQ. Incredible views. From Loop 360 head Westbound on Bee Cave Road 1/4 mile and the Property is on the right.

SUMMARY:

Elegantly-styled two-story building with medical tenant occupying the first floor. Surface parking with abundant trees and shade.



Leasable Area

NEW CONSTRUCTION

Delivered Fall 2021

PARKING RATIO:

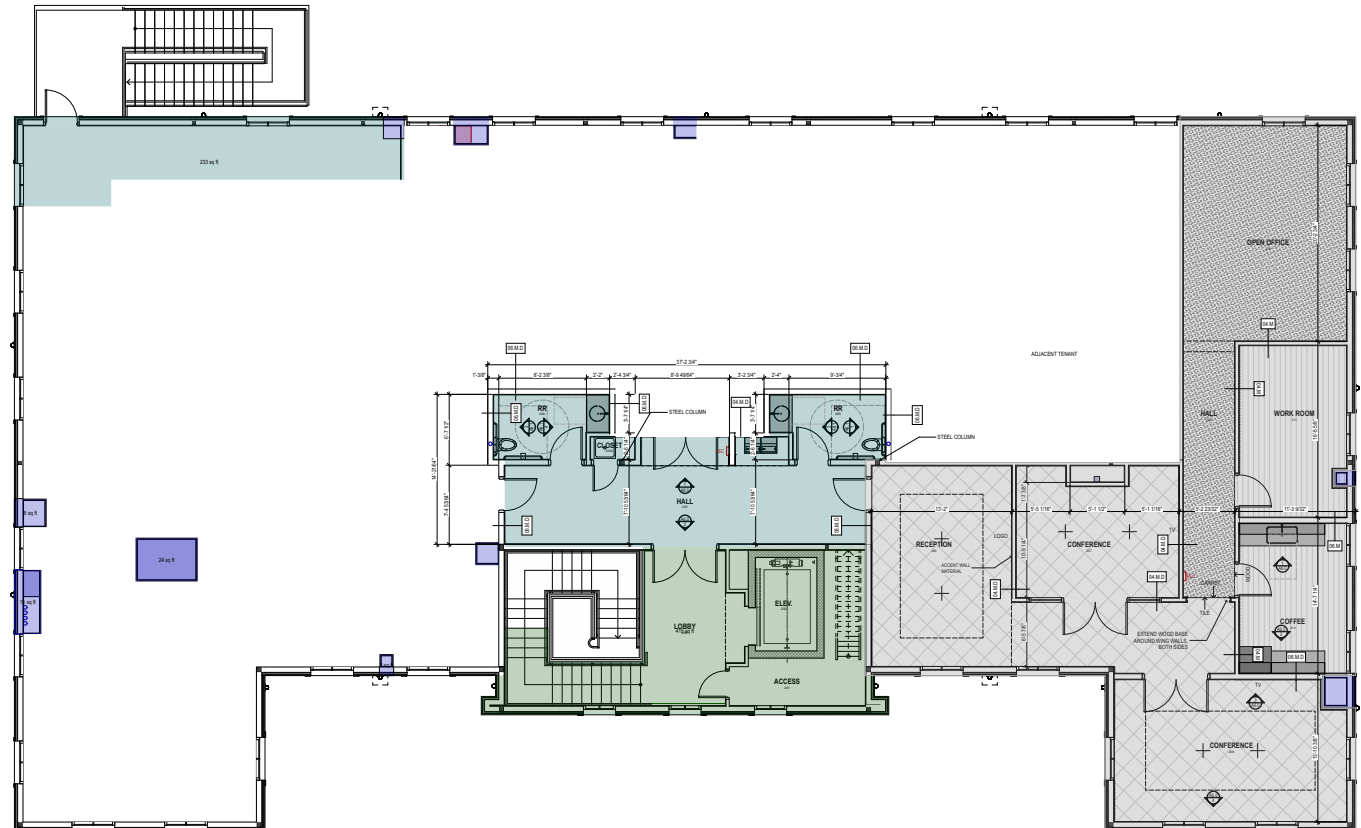
1:280

LOT SIZE:

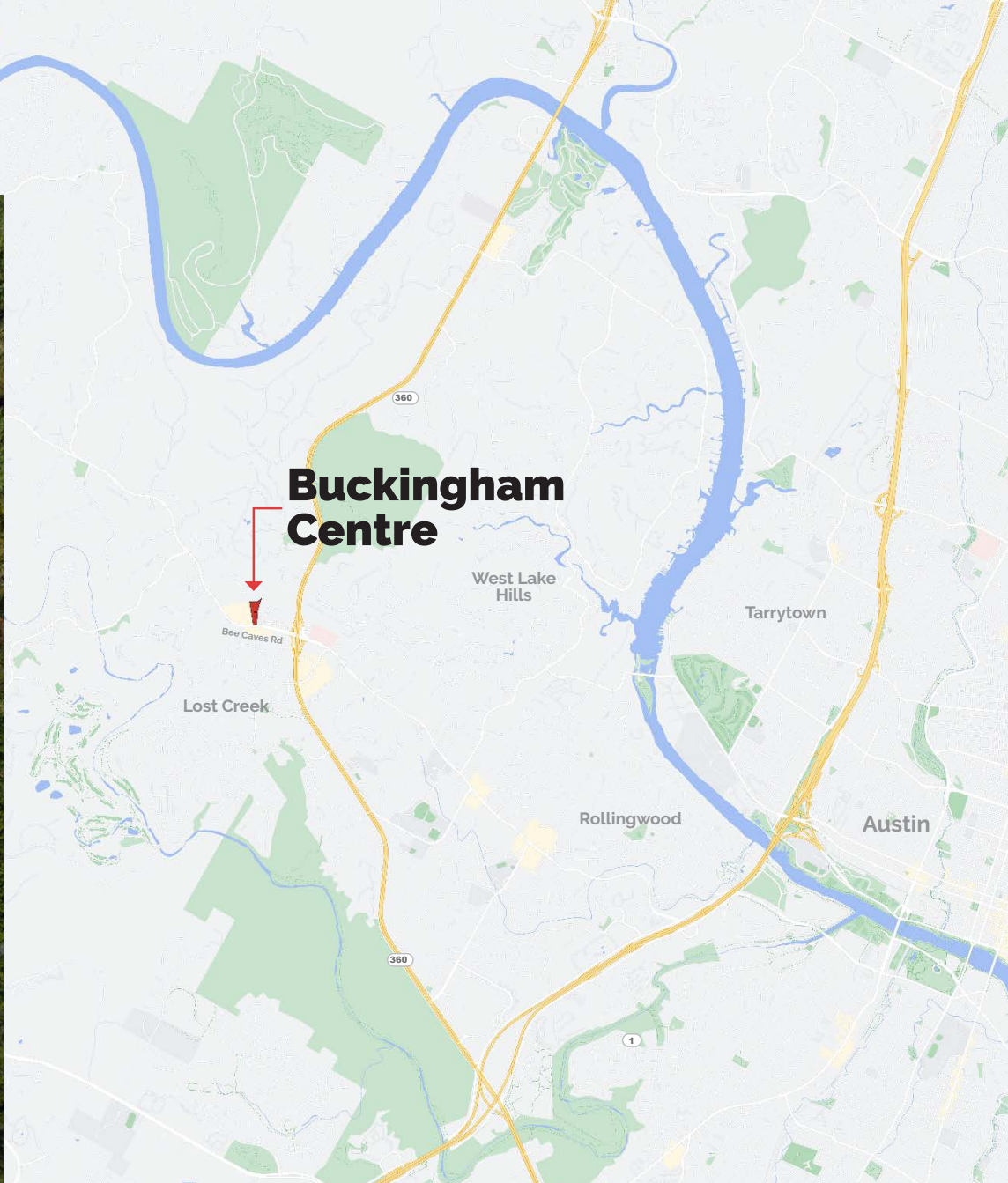
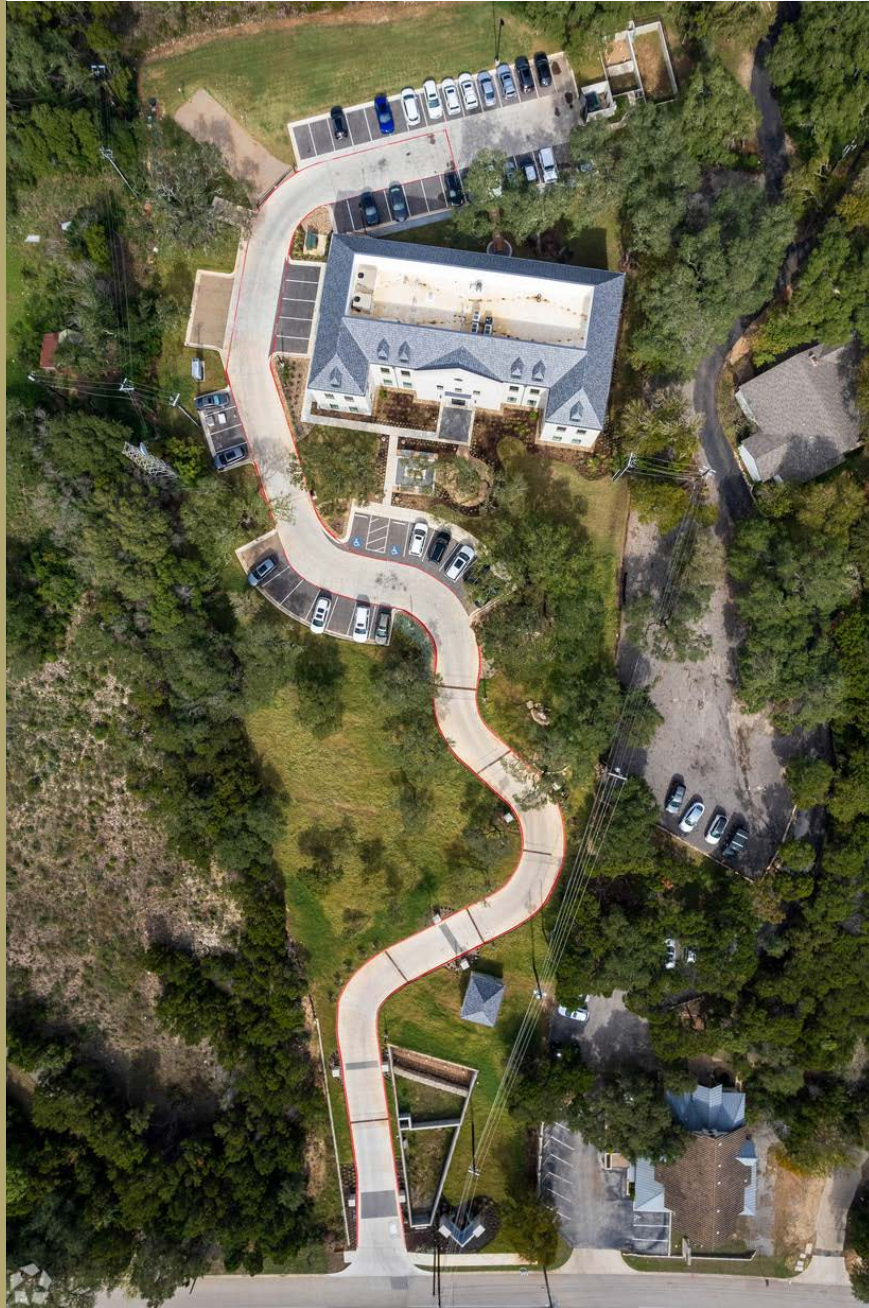
4.49 Acres

PROPERTY INFO:

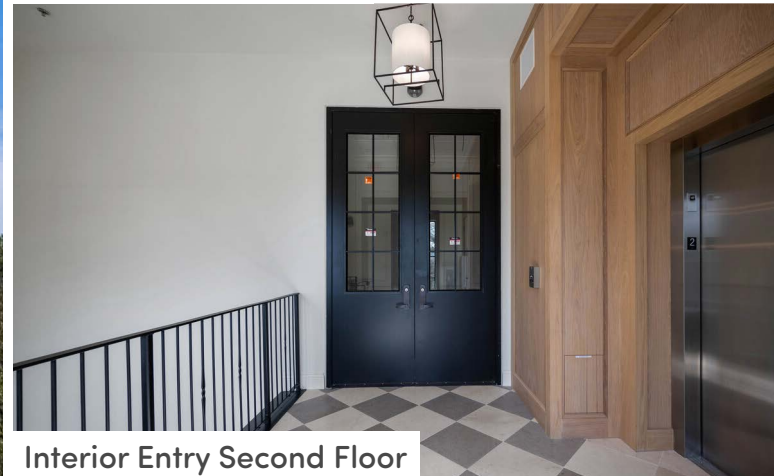
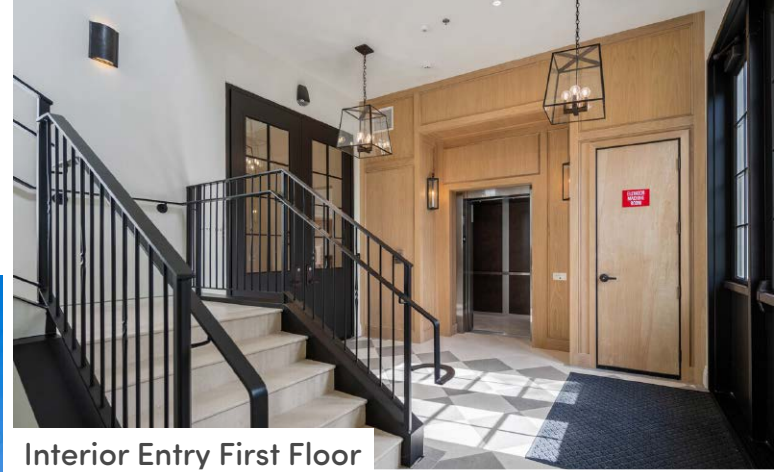
- Great Access to Westlake, Bee Cave, Downtown Austin
- Directly next to County Line BBQ
- Signage available on Monument Sign
- 7,490 RSF Available Upstairs
- 15,000 SF Building
- Elevators
- Private restrooms available
- Kitchenette optional
- Generous Tenant-Improvement Allowance Available



Aerial



Property Photos



AVAILABLE



Buckingham Centre

Contact

Joe Connors
(512) 563-5360
joe@matexas.com

McAllister & Associates
201 Barton Springs Road
Austin, TX 78704
mcallistertexas.com

**McALLISTER
& ASSOCIATES**
REAL ESTATE SERVICES