



SITE
27.86 AC


Veterans Pkwy

161 kV

161 kV

SE Willow Creek Dr.

SE Willow Creek Dr.

 **JLL** SEE A BRIGHTER WAY

Land For Sale

765 - 825 SE Willow Creek Drive, West Des Moines, IA 50265

27.86 acres of
development land

jll.com/des-moines

Property details

Availability: 27.86 acres available

Zoning: Business Park District

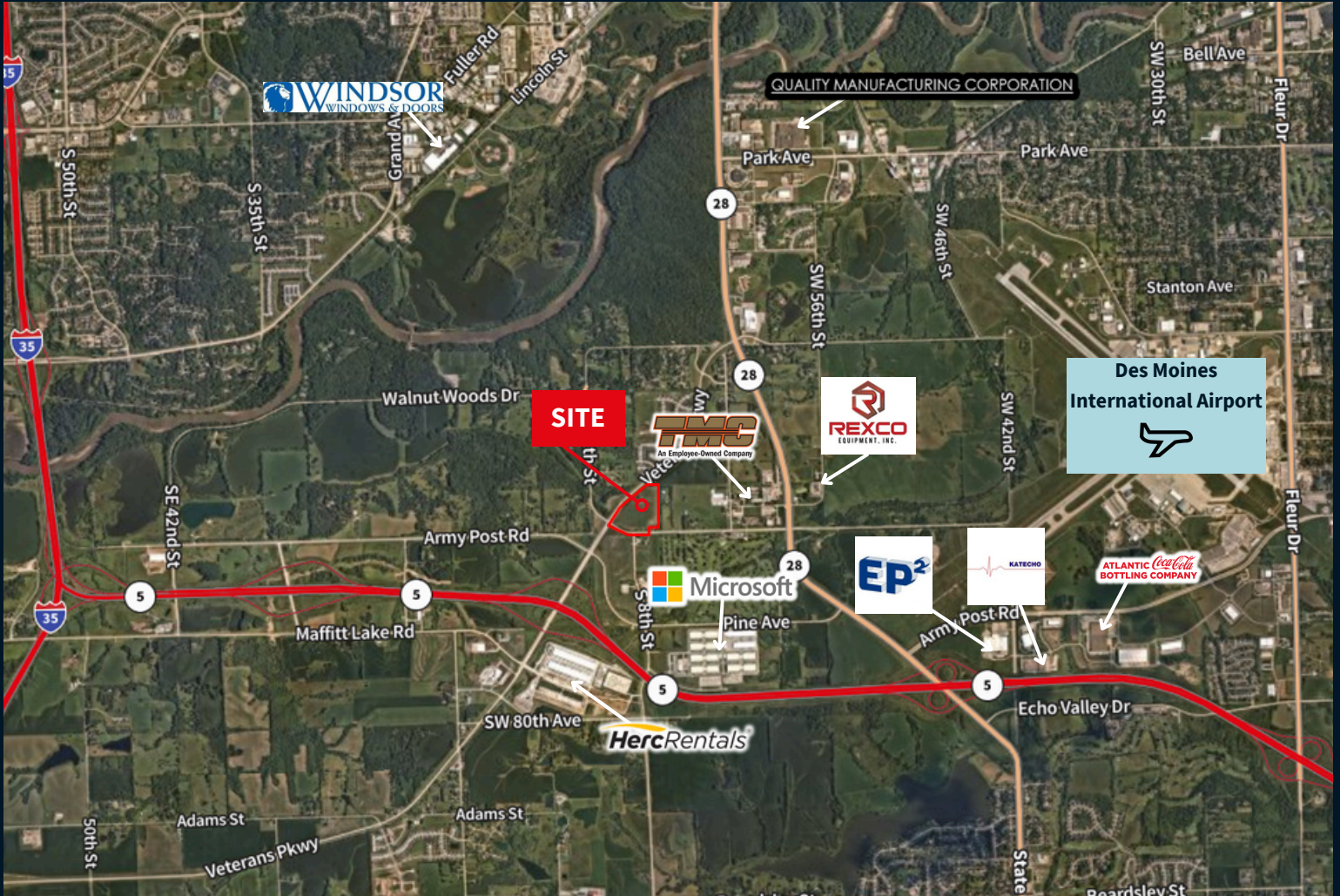
Property price: \$4,250,000 (\$3.50 PSF)

- Development land available in rapidly growing area with great access to Highway 5
- All utilities are readily available at the site
- Power: 161 Kv transmission line adjacent to site
- MidAmerican Energy substation is less than 0.50 miles away from the site
- Ownership is open to selling a portion of the site for a smaller user
- Adjacent to Microsoft's \$1B+ data center site
- Close proximity to Des Moines International Airport



765 - 825 SE Willow Creek Drive

West Des Moines, Iowa, 50265



Austin Hedstrom, SIOR
+1 515 414 1767
austin.hedstrom@jll.com

Tanner Hedstrom
+1 515 745 2734
tanner.hedstrom@jll.com

Marcus R. Pitts, CCIM, SIOR
+1 515 556 4727
marcus.pitts@jll.com

jll.com/des-moines

Jones Lang LaSalle Americas, Inc.

Disclaimer: Although information has been obtained from sources deemed reliable, neither Owner nor JLL makes any guarantees, warranties or representations, express or implied, as to the completeness or accuracy as to the information contained herein. Any projections, opinions, assumptions or estimates used are for example only. There may be differences between projected and actual results, and those differences may be material. The Property may be withdrawn without notice. Neither Owner nor JLL accepts any liability for any loss or damage suffered by any party resulting from reliance on this information. If the recipient of this information has signed a confidentiality agreement regarding this matter, this information is subject to the terms of that agreement. © 2024 Jones Lang LaSalle IP, Inc. All rights reserved.