

For Lease

Riverside Commerce Center IV
1050 Riverside Pkwy | West Sacramento

Property Features

- Building Size: ±31,920 SF; ±85x 380'
- Minimum Bay Size: ±2,413 SF
- Office Space: Existing
- Zoning: BP, City of West Sacramento
- Concrete Tilt-up
- 6" Reinforced Concrete Slab
- Roof: Metal Truss with Wood Overlay, 4-Ply
- Ceiling Clear Height: 20'
- Column Spacing: 40' x 42'
- Loading: Rear Loading
- Grade Level Doors: (2) – 12' x 14'
- Fire Protection: Wet System (0.64 gpm/2,000 SF)
- Parking: 2.8/1,000
- Fiber ready



Dominic Smith
Senior Associate
dominic.smith@jll.com
+ 1 916 995 9396
RE Lic #02106714

Mike Luca, SIOR
Senior Managing Director
mike.luca@jll.com
+ 1 916 214 0466
RE Lic #01447904

jll.com

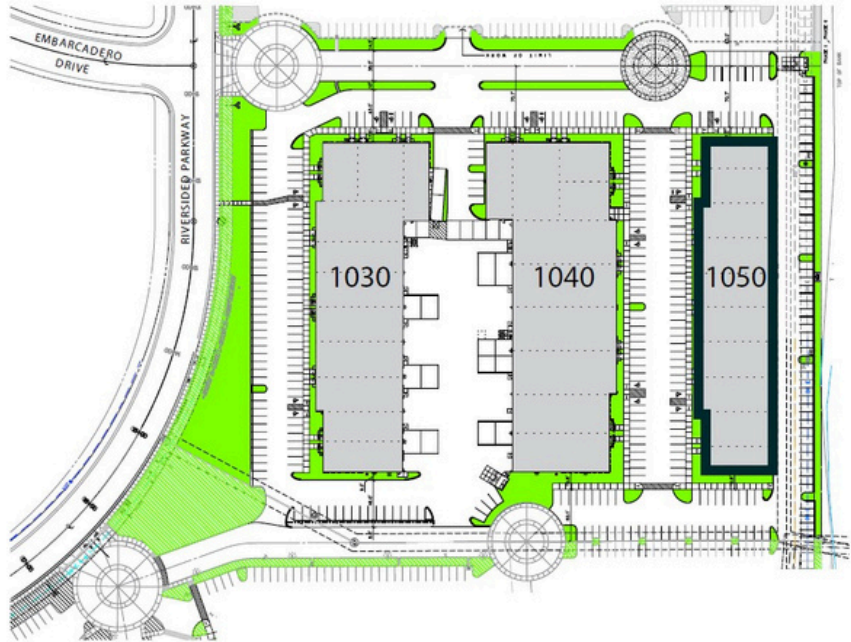


1050 Riverside Pkwy | West Sacramento ±3,510 SF (Available October 1, 2024)

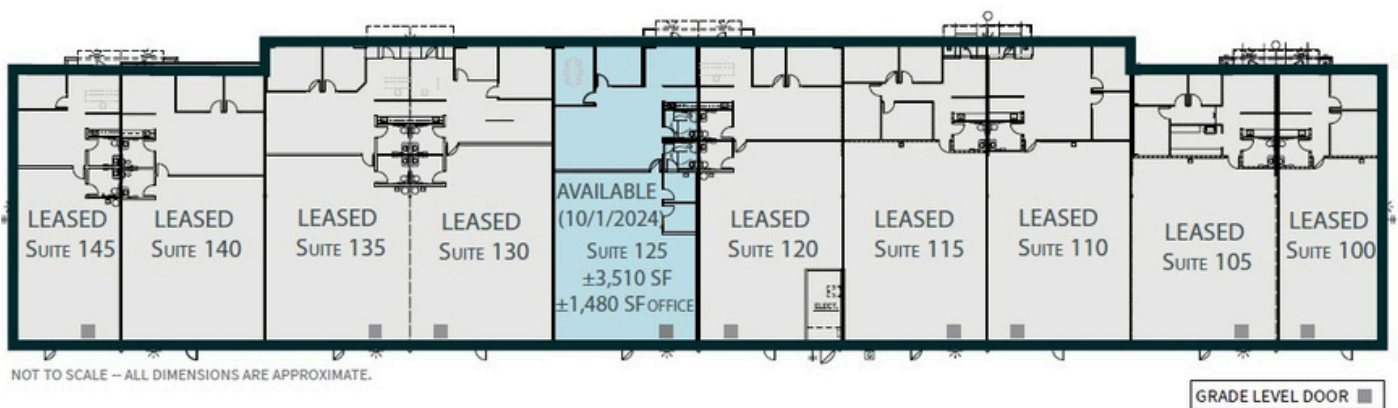
Available Suite:

Suite 125: ±3,510 SF
with ±1,480 SF office

Site Plan



Floor Plan



Contact

Dominic Smith
Senior Associate
dominic.smith@jll.com
+ 1 916 995 9396
RE Lic #02106714

Mike Luca, SIOR
Senior Managing Director
mike.luca@jll.com
+ 1 916 214 0466
RE Lic #01447904

jll.com

