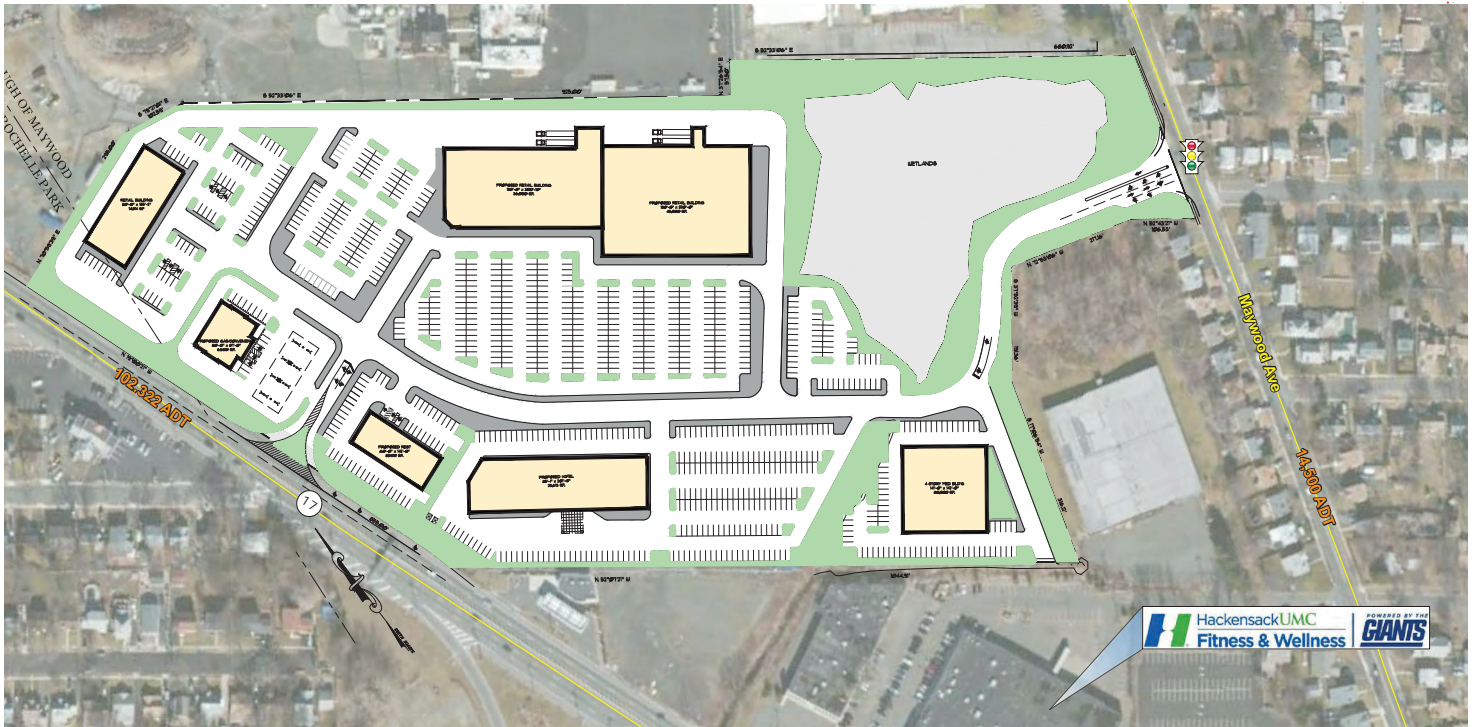


FOR LEASE

Maywood Commons

200 ROUTE 17/151 MAYWOOD AVENUE, BERGEN COUNTY, MAYWOOD, NJ

RETAIL



PROPERTY INFO

NEW PROPOSED MIXED USED REDEVELOPMENT

- Excellent regional location at the crossroads of Route 17 & Route 80
- ± 27 acre former Sears distribution center
- Possible retail, restaurant, entertainment, office & hospitality uses
- Outstanding traffic counts along Route 17 with 105,776 VPD (2014)
- ±860 feet of frontage along Route 17 N
- Right in, right out access along Route 17 N
- Full access along Maywood Avenue serviced by a new traffic signal

2016 DEMOGRAPHICS

	1 mile	2 mile	3 mile	5 mile
Population	29,504	97,447	210,939	630,762
Daytime Population	23,811	122,022	235,938	616,693
Employees	11,202	94,176	158,455	345,000
Median Household Income	\$74,818	\$64,665	\$68,234	\$63,113
Average Household Income	\$94,649	\$84,670	\$90,636	\$86,984

CONTACT US

Mike Horne

+1 732 509 2866 (O)
mike.horne@cbre.com
Lic. Broker-Salesperson: NJ
Lic. Salesperson: PA

Steven Winters

+1 732 509 2867 (O)
+1 732 768 9898 (M)
steven.winters@cbre.com
Lic. Broker-Salesperson: NJ



Maywood Commons

RETAIL



+1 732 509 2866 (O)
mike.horne@cbre.com
Lic. Broker-Salesperson: NJ
Lic. Salesperson: DE

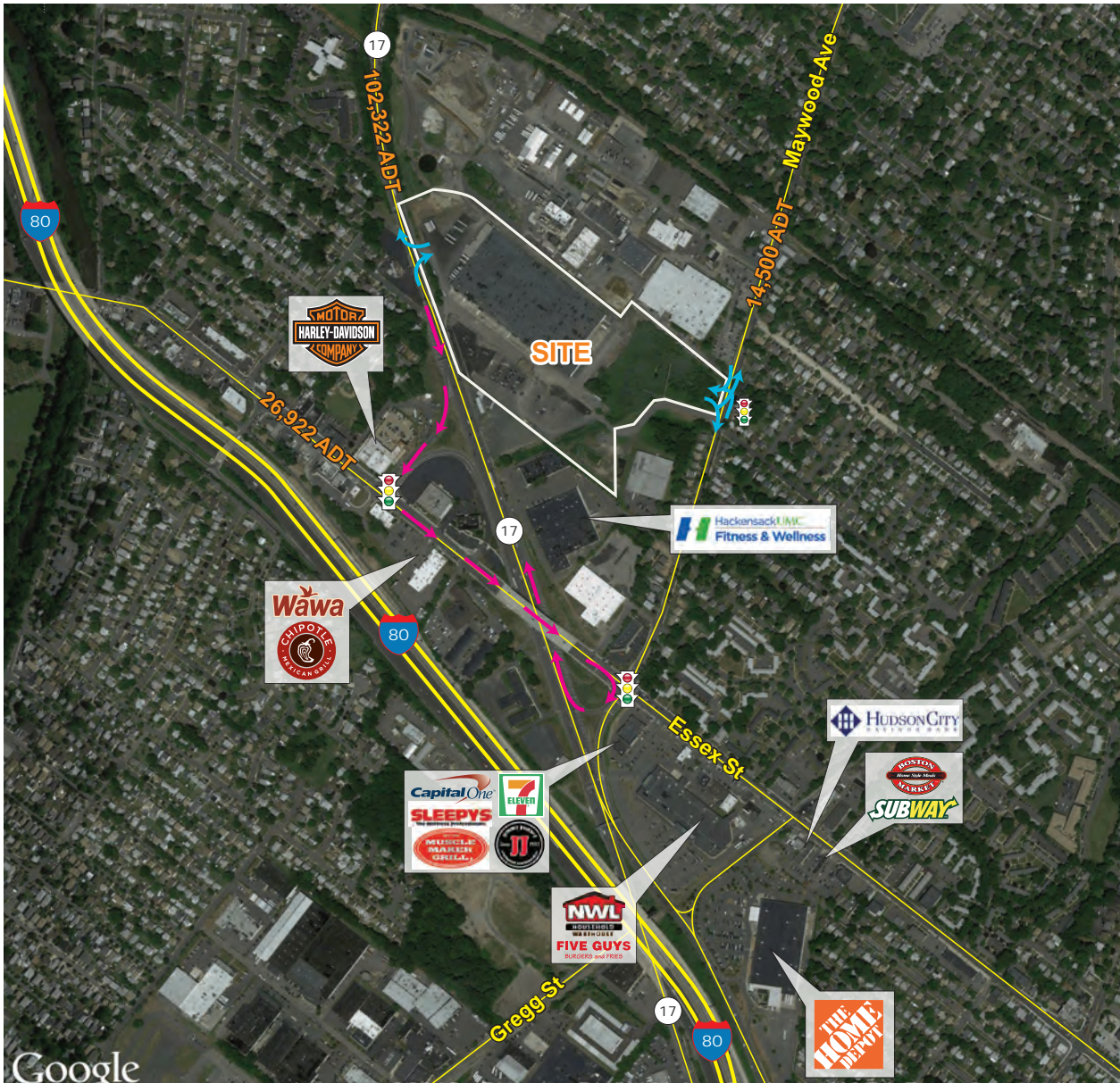


FOR LEASE

Maywood Commons

200 ROUTE 17/151 MAYWOOD AVENUE, BERGEN COUNTY, MAYWOOD, NJ

RETAIL



CONTACT US

Steven Winters

+1 732 509 2867 (O)
+1 732 768 9898 (M)
steven.winters@cbre.com
Lic. Broker-Salesperson: NJ

Mike Horne

+1 732 509 2866 (O)
mike.horne@cbre.com
Lic. Broker-Salesperson: NJ
Lic. Salesperson: DE