

**FOR LEASE**

**2001 Kingsley Ave, Orange Park, FL 32073**

# Orange Park Medical Center

Medical Office

60,000 SF | Orange Park, FL

**Completion Date: April 1, 2022**

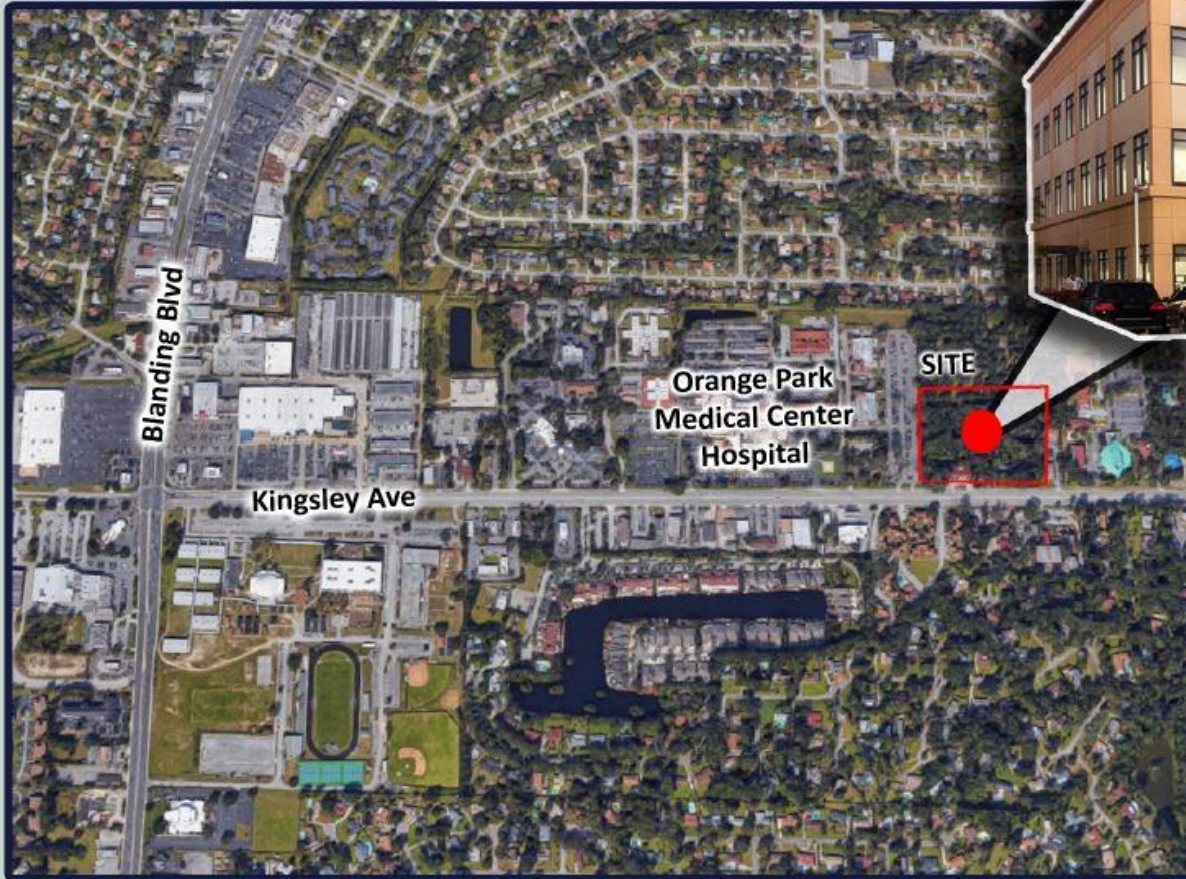


**Brian Wilcox**  
Director of Brokerage Services  
321.663.3953  
[bwilcox@holladayproperties.com](mailto:bwilcox@holladayproperties.com)

**FOR LEASE**

**2001 Kingsley Ave, Orange Park, FL 32073**

**Aerial Map**



**Property Specifications**

<b>Building Size:</b>	<b>60,000 SF</b>
<b>Class:</b>	<b>A</b>
<b>Stories:</b>	<b>3</b>
<b>Estimated Rent PSF:</b>	<b>\$23.00 NNN</b>
<b>Estimated Completion:</b>	<b>Spring 2022</b>

**FOR LEASE**

**2001 Kingsley Ave, Orange Park, FL 32073**

## Orange Park Medical Center



## Orange Park Medical Center

- Orange Park Medical Center is a 317-bed short term acute care facility
- The hospital recently completed a \$126M expansion, adding a 100,000 SF patient tower to accommodate 48 medical/surgical beds and two floors of shell space for the future expansion of 48 additional patient rooms.
- The hospital also recently completed a \$6.4M technology upgrade including patient smart bands, wireless vital monitors, electronic communication boards, and iPhones.
- Orange Park Medical Center was awarded the Healthgrades 2020 America's 250 Best Hospitals, placing it in the top 5% of hospitals nationwide for its superior clinical performance.

# FOR LEASE

# 2001 Kingsley Ave, Orange Park, FL 32073

## Orange Park Area Demographics

	1 Mi.	3 Mi.	5 Mi.
<b>Population</b>			
2019 Population:	10,963	59,780	136,430
Pop Growth (5 yr):	9.65%	6.71%	7.06%
Average Age:	41.3	39.6	38.3
<b>Households</b>			
2019 Households:	4,116	23,896	50,875
HH Growth (5 yr):	9.65%	6.62%	6.95%
Average HH Inc:	\$68,605	\$71,338	\$80,512
<b>Consumer Spending</b>			
Healthcare Spending Per HH:	\$1,460	\$1,369	\$1,407

- Orange Park is located adjacent to several 55+ Active Adult communities with over 600 units to the west and over 2,300 units to the east.

- 65+ population growth is expected to outpace the national average and will continue to support the demand for healthcare in the area.

