



200 PRECISION ROAD
HORSHAM, PA

28,139 SF AVAILABLE FOR LEASE
FLEX WAREHOUSE SPACE

126,500 SF
11.13 Acres

PROPERTY HIGHLIGHTS

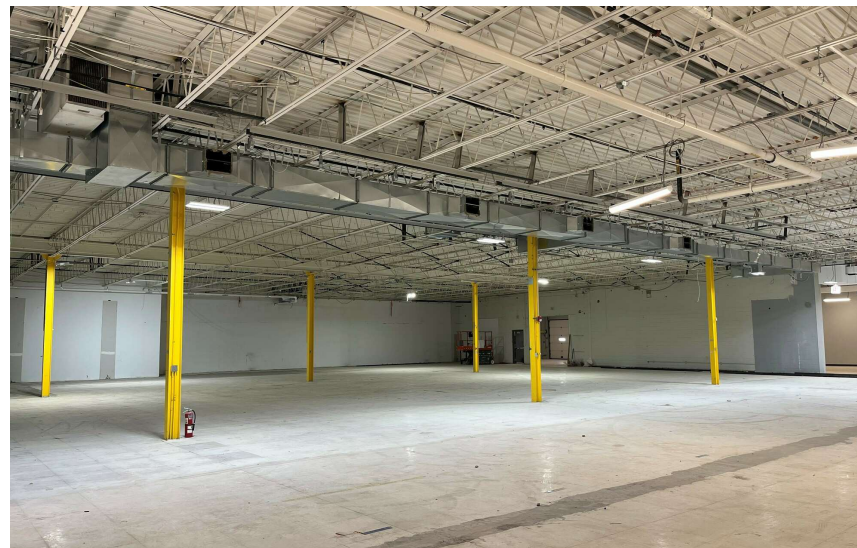
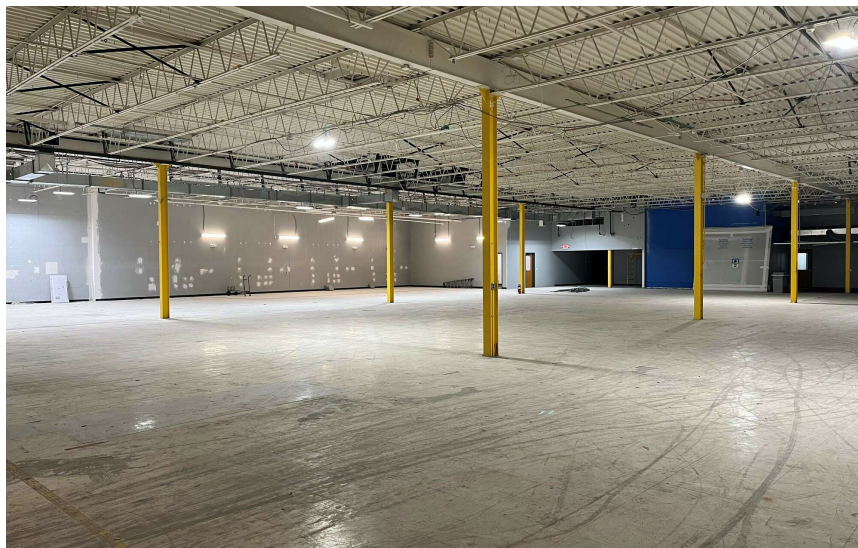
- 28,139 SF Available for Lease
- Approximately 1/3 Office and 2/3 Warehouse
- 14' clear ceiling
- 30'w x 40'd column spacing
- Three (3) loading docks
- Wet Sprinkler System
- 800 - 1,600a/120 - 480v 3p 4w Heavy
- Public Water and Sewer
- Zoned I-2 – Industrial (Horsham Township)
- This property is located in the Horsham Ridge Industrial Park offering excellent connectivity with convenient access to I-276 and Route 611.



EXTERIOR PHOTOS



INTERIOR PHOTOS



DEMOGRAPHICS MAP & REPORT

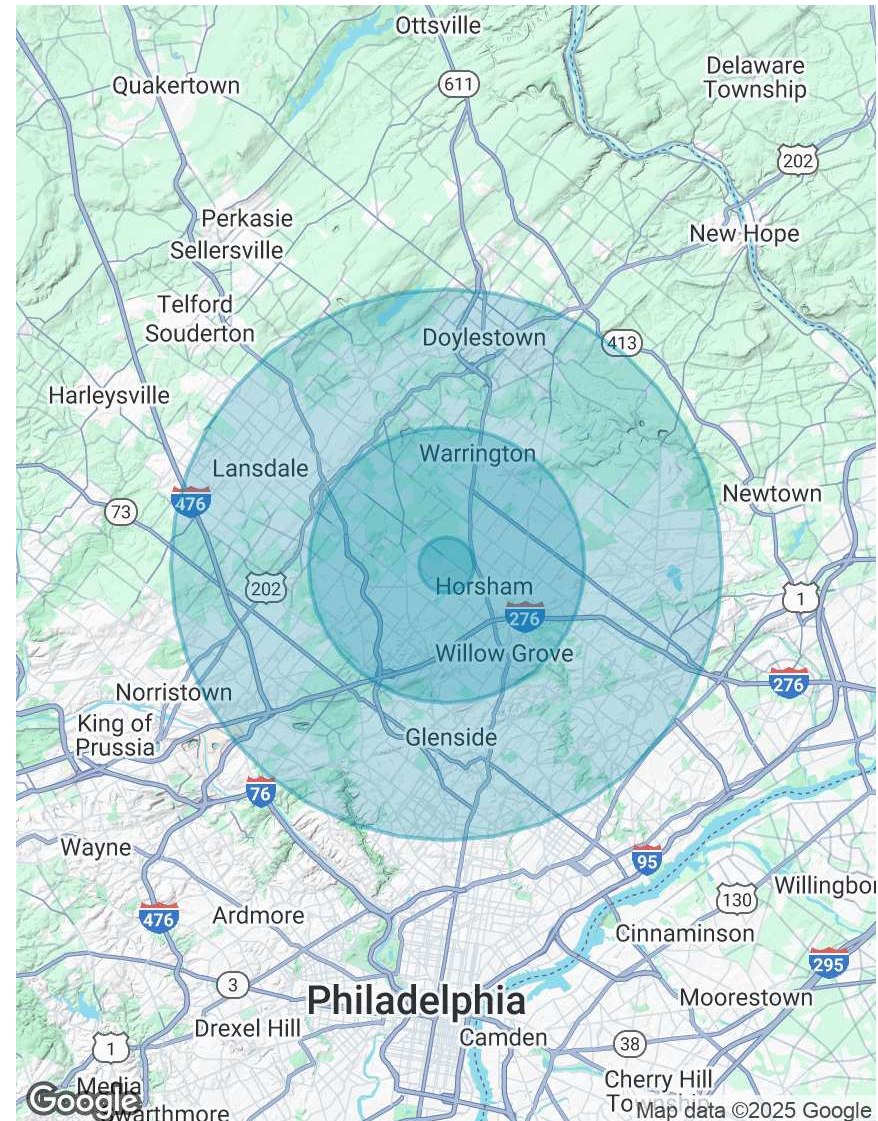
POPULATION

| | 1 MILE | 5 MILES | 10 MILES |
|----------------------|--------|---------|----------|
| Total Population | 5,595 | 190,331 | 948,898 |
| Average Age | 42 | 43 | 43 |
| Average Age (Male) | 40 | 42 | 41 |
| Average Age (Female) | 43 | 45 | 44 |

HOUSEHOLDS & INCOME

| | 1 MILE | 5 MILES | 10 MILES |
|---------------------|-----------|-----------|-----------|
| Total Households | 2,270 | 72,834 | 362,593 |
| # of Persons per HH | 2.5 | 2.6 | 2.6 |
| Average HH Income | \$159,687 | \$150,814 | \$134,179 |
| Average House Value | \$487,022 | \$491,683 | \$440,322 |

Demographics data derived from AlphaMap



CONTACT



Timothy Pennington

Partner & Senior Vice President

215.448.6266

tpennington@binswanger.com



Matt Corrigan

Senior Vice President

215.448.6018

mcorrigan@binswanger.com



Three Logan Square
1717 Arch Street, Suite 5100
Philadelphia, PA 19103
Phone: 215.448.6000
binswanger.com

The information contained herein is from sources deemed reliable, but no warranty or representation is made as to the accuracy thereof and no liability may be imposed.