

FOR SALE - ZONED MEDICAL

±6,076 SF SINGLE-STORY MEDICAL OFFICE BUILDING



ARBOURS OFFICE CAMPUS

29803 Santa Margarita Parkway, Rancho Santa Margarita, CA

PROPERTY HIGHLIGHTS

- $\pm 6,076$ SF Rare Medical, Freestanding, Single-Story Office Building
- Building is Divisible
 - Suite 100: $\pm 4,777$ SF
 - Suite 150: $\pm 1,299$ SF
- 5:1,000 Parking Ratio
- Built in 2000
- Campus Setting with Timeless Santa Barbara style architecture, open courtyards, and attractive landscaping
- Walking Distance to Numerous Retail Amenities
- Easy Access to the 241 FTC Toll Road



EXCLUSIVELY LISTED BY:

MARK JERUE

Senior Vice President
License ID# 01073399
949.790.3121
mjerue@leeirvine.com

CRAIG FITTERER

Senior Vice President
License ID# 01246929
949.790.3123
cfitterer@leeirvine.com

BJ FELL

Senior Vice President
License ID# 01929179
949.790.3144
bfell@leeirvine.com

GIANCARLO SPINOSI

Associate
License ID# 02065254
949.790.3109
gspinosi@leeirvine.com

LEE & ASSOCIATES

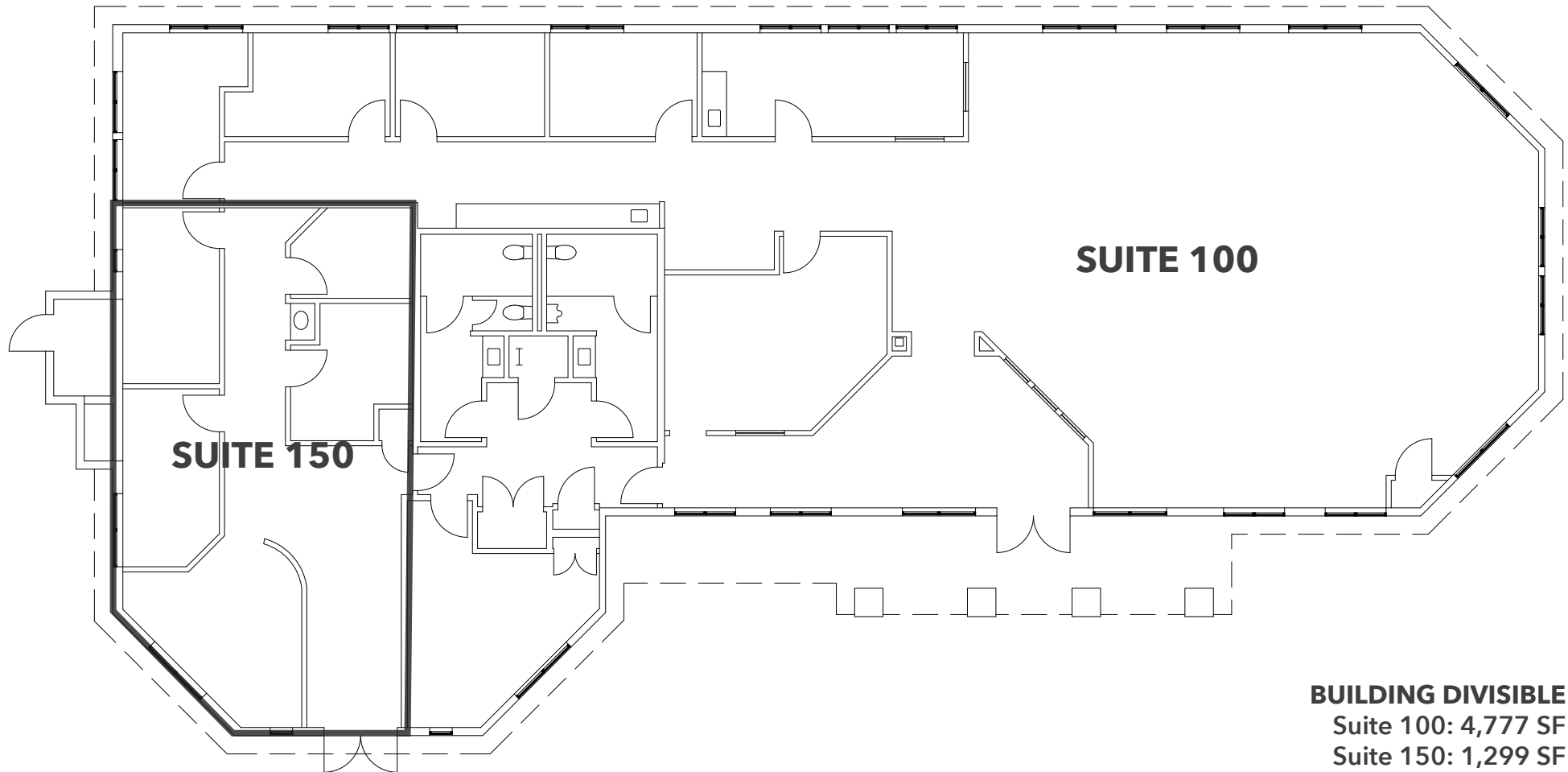
COMMERCIAL REAL ESTATE SERVICES

No warranty or representation is made to the accuracy of the foregoing information. Terms of sale or lease and availability are subject to change or withdrawal without notice.

ARBOURS OFFICE CAMPUS

AVAILABLE FOR SALE

29803 Santa Margarita Parkway, Rancho Santa Margarita



BUILDING DIVISIBLE
Suite 100: 4,777 SF
Suite 150: 1,299 SF

EXCLUSIVELY LISTED BY:

MARK JERUE

Senior Vice President
License ID# 01073399
949.790.3121
mjerue@leeirvine.com

CRAIG FITTERER

Senior Vice President
License ID# 01246929
949.790.3123
cfitterer@leeirvine.com

BJ FELL

Senior Vice President
License ID# 01929179
949.790.3144
bfell@leeirvine.com

GIANCARLO SPINOSI

Associate
License ID# 02065254
949.790.3109
gspinosi@leeirvine.com

LEE & ASSOCIATES

COMMERCIAL REAL ESTATE SERVICES

No warranty or representation is made to the accuracy of the foregoing information. Terms of sale or lease and availability are subject to change or withdrawal without notice.

ARBOURS OFFICE CAMPUS

AVAILABLE FOR SALE

29803 Santa Margarita Parkway, Rancho Santa Margarita



EXCLUSIVELY LISTED BY:

MARK JERUE

Senior Vice President
License ID# 01073399
949.790.3121
mjerue@leeirvine.com

CRAIG FITTERER

Senior Vice President
License ID# 01246929
949.790.3123
cfitterer@leeirvine.com

BJ FELL

Senior Vice President
License ID# 01929179
949.790.3144
bfell@leeirvine.com

GIANCARLO SPINOSI

Associate
License ID# 02065254
949.790.3109
gspinosi@leeirvine.com

LEE & ASSOCIATES

COMMERCIAL REAL ESTATE SERVICES

No warranty or representation is made to the accuracy of the foregoing information. Terms of sale or lease and availability are subject to change or withdrawal without notice.