



For Sublease | 25,709 SF

Del Taco: 25521 Commercentre Drive, Suite 200, Lake Forest, CA 92630

PROPERTY DETAILS

- Move-In Ready
- Furniture Included
- Building Top Signage Available
- Sublease Term through March 2026
- Longer Term available with Landlord



Matt Sherburne

C: 949.525.8062

matt@hrs-commercial.com

License 02061641

Kyle Sherburne

C: 949.525.8587

kyle@hrs-commercial.com

License 02015820

Rick Sherburne

C: 714.742.0089

rick.sherburne@hrs-commercial.com

License 01516217

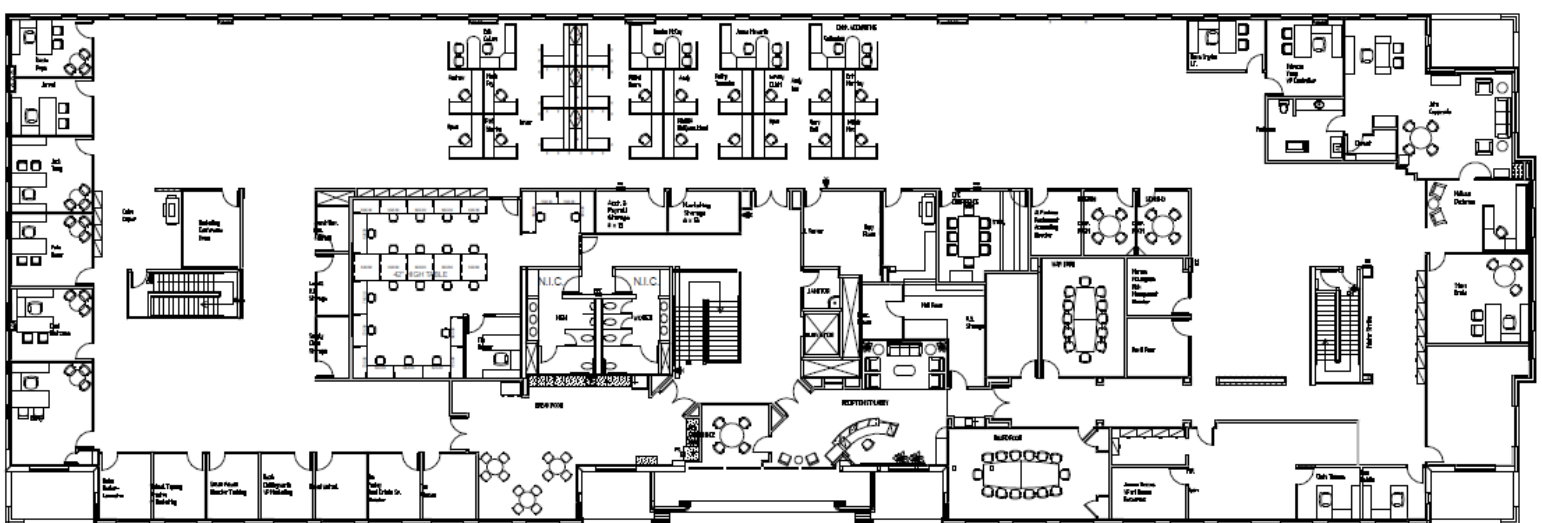
HRS
COMMERCIAL



DEL TACO

25521 Commercentre Drive, Suite 200
Lake Forest, CA 92630

Second Floor
25,709 Square Feet



Second Floor

