

# FOR LEASE

2915 Rocky Mountain Ave.  
Suite 240  
Loveland, CO 80538

## CLASS A OFFICE AT CENTERRA

PROPERTY TYPE  
**OFFICE**

AVAILABLE  
**3,140 RSF**

RATE  
**\$19.95/RSF NNN**



### FEATURES:

- Suite 240 - 3,140 RSF: Corner suite located on the second floor of the building with lake and mountain views. Suite includes three offices, large conference room, breakroom and ample open workspaces
- Located in Centerra's Rangeview Office Campus with easy access to I-25, only 45 minutes to DIA and Denver CBD
- Silver LEED certification by the U.S. Green Building Council

**REALTEC**  
COMMERCIAL REAL ESTATE SERVICES

**Ron Kuehl**  
970.342.6749  
ronk@realtec.com

**Jamie Globelnik**  
970.310.4811  
jamiek@realtec.com

**VIEW MORE REALTEC LISTINGS AT [WWW.REALTEC.COM](http://WWW.REALTEC.COM)**



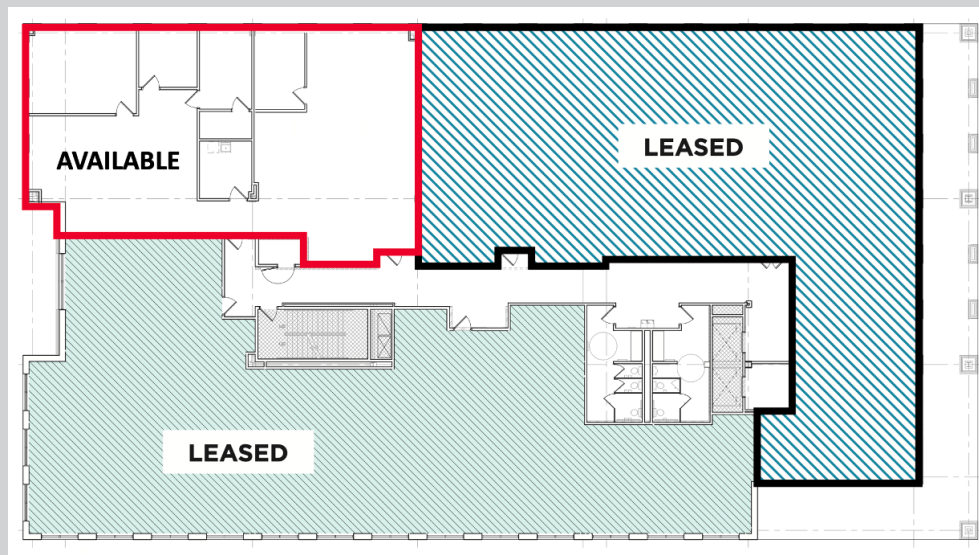
# FOR LEASE

2915 Rocky Mountain Ave.  
Suite 240  
Loveland, CO 80538

## RANGEVIEW THREE OFFICE BUILDING

### PROPERTY HIGHLIGHTS:

- 4/1000 parking ratio
- Join tenants University of Northern Colorado, Animal Health International and Tek Systems
- Located along the shores of Equalizer Lake and adjacent to the 250-acre High Plains Environmental Center, office users will enjoy a setting unlike anywhere else in Northern Colorado. Amenities include miles of lakefront trails, fantastic pedestrian connectivity, restaurants, retail and fitness studio



#### Fort Collins

712 Whalers Way, Bldg. B, Suite 300  
Fort Collins, CO 80525  
970.229.9900

#### Loveland

200 E. 7th Street, Suite 418  
Loveland, CO 80537  
970.593.9900

#### Greeley

1711 61st Avenue, Suite 104  
Greeley, CO 80634  
970.346.9900

**REALTEC**  
COMMERCIAL REAL ESTATE SERVICES