

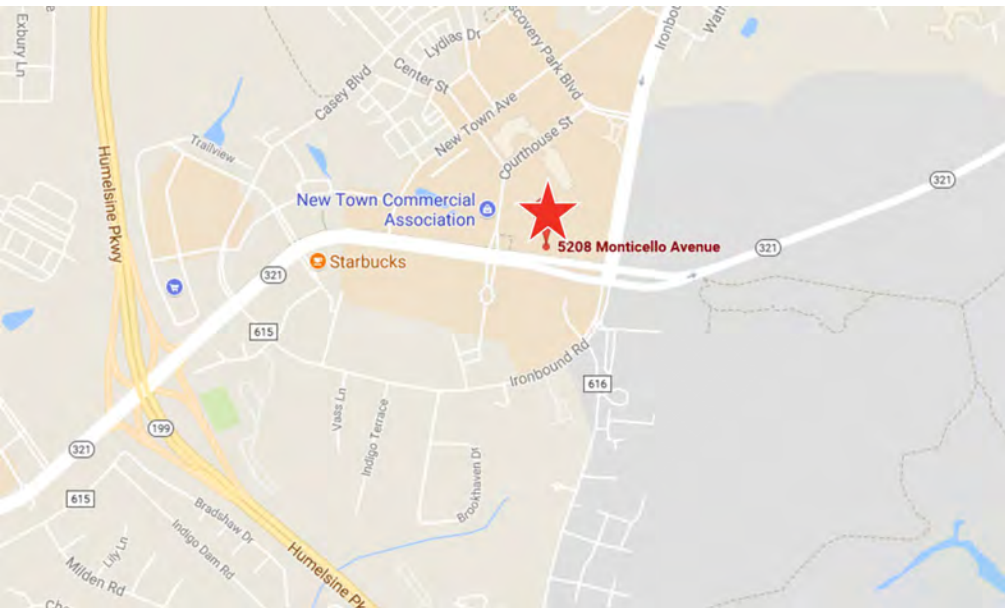
**FOR LEASE**

# Howard Hanna Building

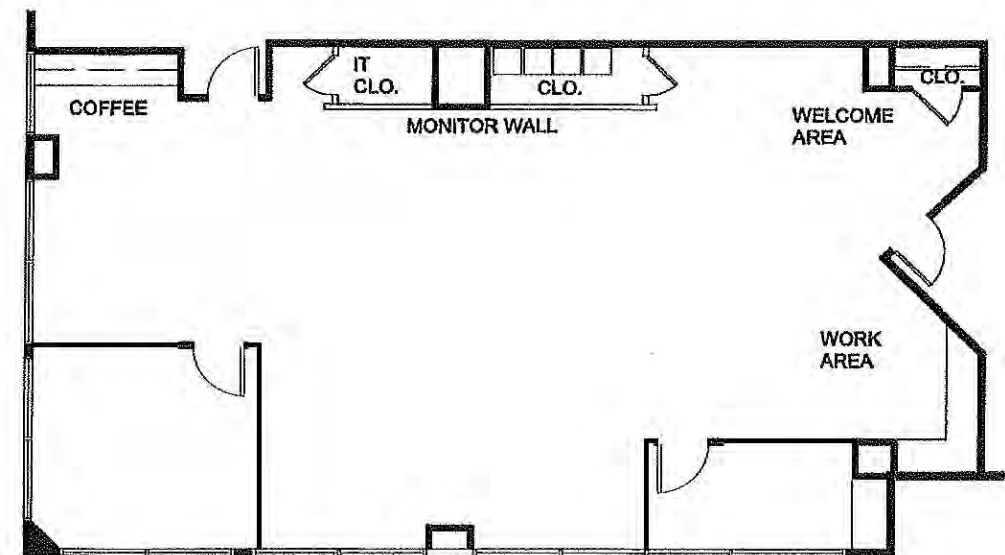
5208 Monticello Avenue, Williamsburg, VA



# PROPERTY FEATURES



- Premier Class A office building
- Easy to find location with abundant parking on site
- For Lease: \$24 PSF Full Service (Office)
- \$24 PSF Net Janitorial (Medical)
- Suite 180: Approximately  $\pm 2,059$  RSF
- Close proximity to the courthouse and the College of William & Mary
- First floor suite for easy access



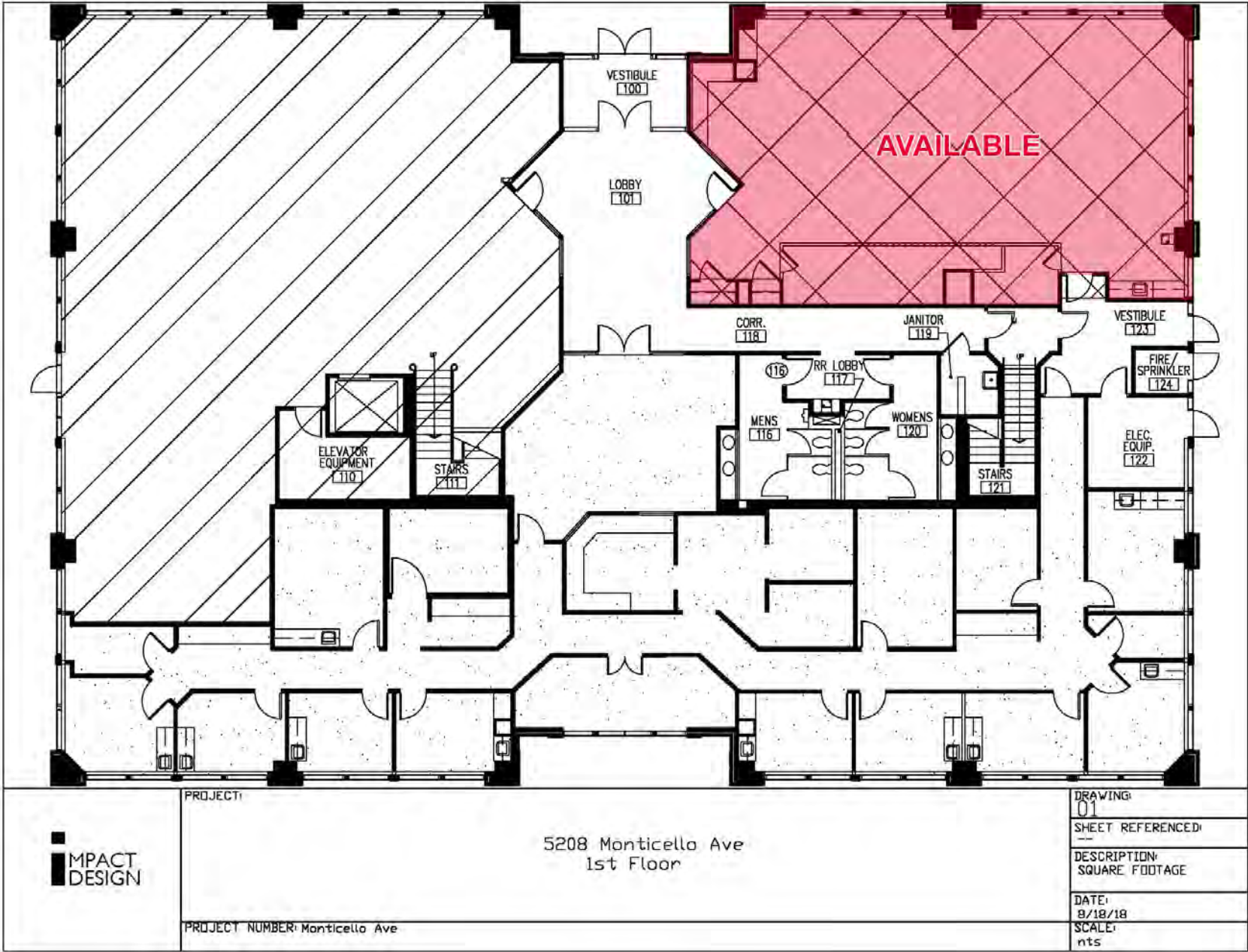
SUITE 180 FLOOR PLAN

## Join Tenants/Nearby Retailers





# FIRST FLOOR PLAN







# AERIAL







## CONTACT

ANDY DALLAS, CCIM, SIOR  
Senior Vice President  
757 873 3661  
[andy.dallas@thalhimer.com](mailto:andy.dallas@thalhimer.com)

One BayPort Way  
Suite 100  
Newport News, VA 23606  
[thalhimer.com](http://thalhimer.com)



Independently Owned and Operated / A Member of the Cushman & Wakefield Alliance

Cushman & Wakefield | Thalhimer © 2025. No warranty or representation, express or implied, is made to the accuracy or completeness of the information contained herein, and same is submitted subject to errors, omissions, change of price, rental or other conditions, withdrawal without notice, and to any special listing conditions imposed by the property owner(s). As applicable, we make no representation as to the condition of the property (or properties) in question.