

**382 EAST**  
**FORDHAM RD**  
**THE BRONX**





# 382 EAST FORDHAM RD

Between Webster & Marion Ave | The Bronx

## PROPERTY INFORMATION:

SIZE:	1,650 SF Ground Floor + Basement & Mezzanine
FRONTAGE:	20'
CEILING HEIGHT:	11' - Ground Floor   10' Mezz & Basement
ASKING RENT:	Upon Request
POSSESSION:	Arranged
TRANSPORTATION:	<b>B</b> <b>D</b>

## HIGHLIGHTS:

- Former *Magic Sneakers*
- Excellent visibility in the heart of *Fordham Center*
- High foot traffic area in dense residential neighborhood
- Neighbors include: *CityMD, Old Navy, McDonald's, Taco Bell, KFC, Checkers, Walgreens, Wing Stop, TJ Maxx, Applebee's, Chipotle, VIM, Rainbow, Claire's, Dunkin', GAP, Planet Fitness, Best Buy, Popular Bank, Krispy Kreme, Burlington, Little Caesar's, Starbucks, Target, Foot Locker, Jimmy Jazz, Pollo Campero*

FOR MORE INFORMATION, PLEASE CONTACT:

**HUNTER LAZAN**

772.559.5195

HLazan@ksrny.com

**JACK KHASKI**

917.355.0559

JackK@ksrny.com

**ALBERT MANOPLA**

212.380.8369

AManopla@ksrny.com

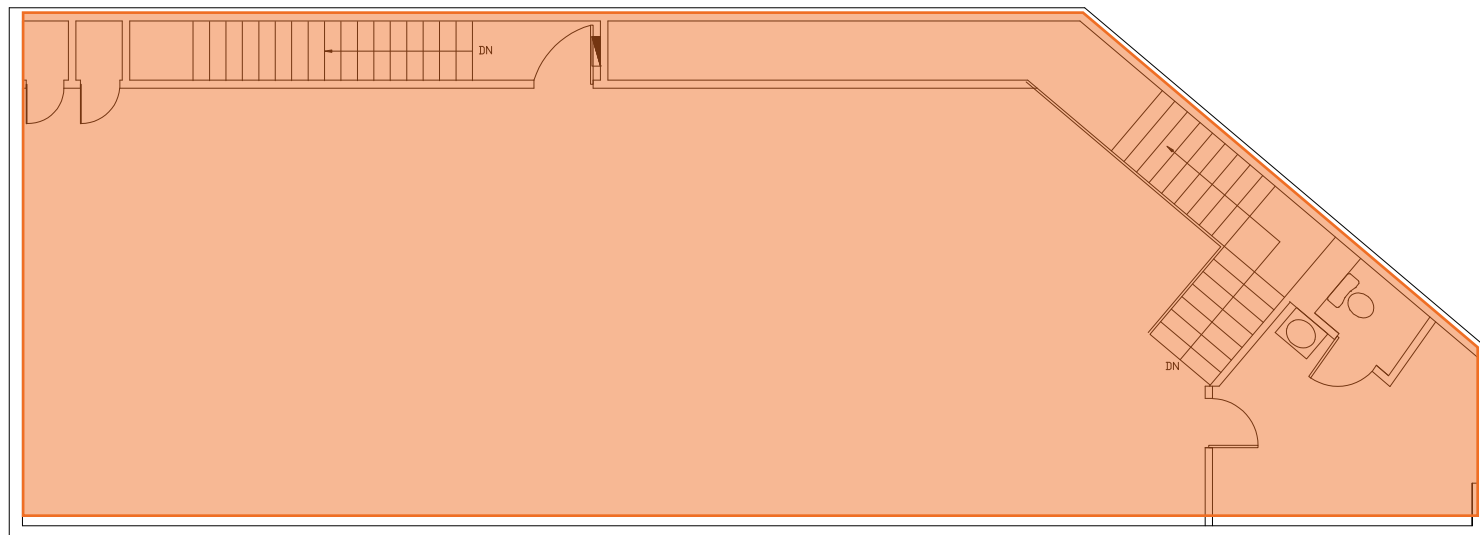
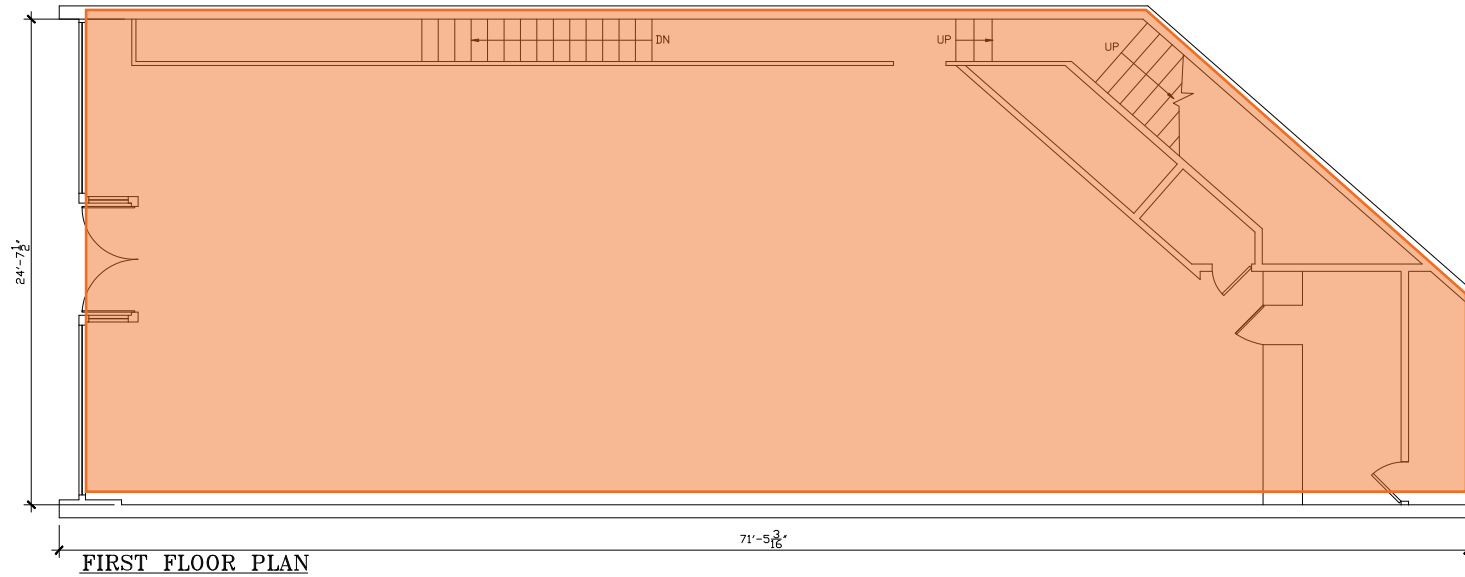


All information supplied in this marketing presentation and/or flyer is from sources deemed reliable and is furnished subject to errors, omissions, modifications, removal of listings from sale/lease and to any listing condition. Any square footage, dimensions, floor plans and/or technical data set forth are approximations and are subject to further elaboration/confirmation.

# 382 EAST FORDHAM RD

Between Webster & Marion Ave | The Bronx

## FLOOR PLANS:



SECOND FLOOR PLAN



All information supplied in this marketing presentation and/or flyer is from sources deemed reliable and is furnished subject to errors, omissions, modifications, removal of listings from sale/lease and to any listing condition. Any square footage, dimensions, floor plans and/or technical data set forth are approximations and are subject to further elaboration/confirmation.