

OFFICE FOR SALE

GRAND CENTRAL FLATS

2632 Central Ave, St Petersburg, FL 33712



PROPERTY HIGHLIGHTS

- Freshly painted and well appointed interior.
- Modern-Historic Charm.
- Large offices, and space for teams.
- Suitable for office or retail.
- Large front courtyard.
- Grand Central District.
- 2,000sf +/-



LOCATION DESCRIPTION

Located just off of Saint Pete's most vibrant corridor, this area has a walk score "off the charts." Sitting directly on Central Avenue next to Bandit Coffee and across from Casita Taqueria, the surrounding blocks host many local restaurants, shops and galleries. Plenty of entertainment and dining options close by.

OFFERING SUMMARY

Purchase Price:	\$1,500,000
Square Footage:	2,000 SF
Lot Size:	4,499 SF
Building Size:	2,075 SF

We obtained the information above from sources we believe to be reliable. However, we have not verified its accuracy and make no guarantee, warranty or representation about it. It is submitted subject to the possibility of errors, omissions, change of price, rental or other conditions, prior sale, lease or financing, or withdrawal without notice. We include projections, opinions, assumptions or estimates for example only, and they may not represent current or future performance of the property. You and your tax and legal advisors should conduct your own investigation of the property and transaction.

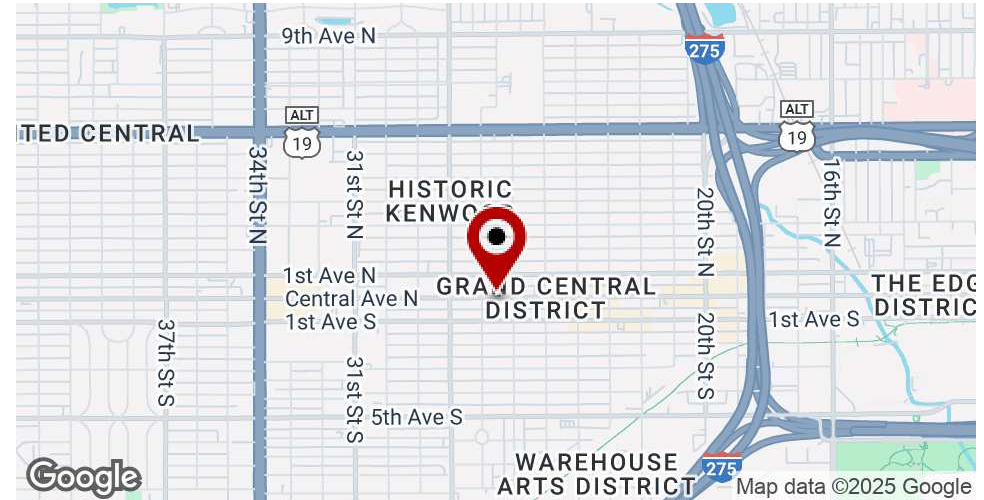
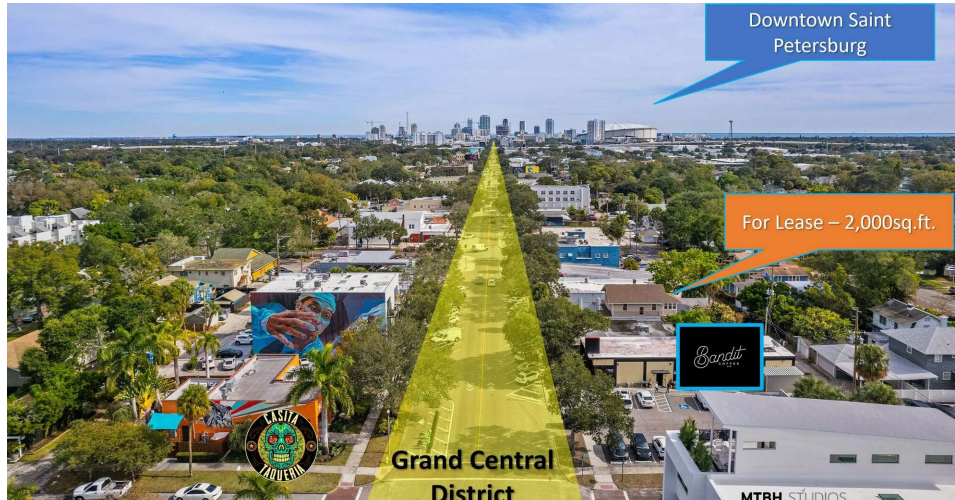
JAKE WOLLMAN
CRE Advisor
O: 727.280.5592
C: 239.272.7006
jwollman@kwcommercial.com
FL #SL3237174

KW COMMERCIAL
360 Central Ave. #600
St Petersburg, FL 33701

Each Office Independently Owned and Operated

GRAND CENTRAL FLATS

2632 Central Ave, St Petersburg, FL 33712



PROPERTY OVERVIEW

Historic Charm Meets Modern Functionality on Central Avenue:

Welcome to a rare purchase opportunity in the heart of St. Petersburg's vibrant Grand Central District. This meticulously renovated, two-story historic bungalow offers ~2,000 SF of private, move-in-ready office or creative space. Blending timeless charm with thoughtful modern upgrades, it's ideal for a gallery, studio, salon, boutique retail store, or professional office.

Situated directly on Central Avenue between 26th and 27th Street, the location is unbeatable. Step outside to enjoy countless walkable lunch spots, art galleries, boutiques, and happy hour hangouts just steps away.

Inside, the space features original hardwood floors, tons of natural light, and an exposed brick fireplace that anchors the main gathering area. Mid-century modern furnishings, plantation shutters, and crisp white trim complement the aesthetic throughout. The layout includes multiple spacious offices—each suitable for private executives, small teams, or collaborative work—as well as a full kitchenette/break area. An expansive private courtyard wraps the property, perfect for casual meetings, outdoor events, or quiet creative sessions.

Schedule your private tour today by calling Jake Wollman - 239.272.7006

We obtained the information above from sources we believe to be reliable. However, we have not verified its accuracy and make no guarantee, warranty or representation about it. It is submitted subject to the possibility of errors, omissions, change of price, rental or other conditions, prior sale, lease or financing, or withdrawal without notice. We include projections, opinions, assumptions or estimates for example only, and they may not represent current or future performance of the property. You and your tax and legal advisors should conduct your own investigation of the property and transaction.

JAKE WOLLMAN
CRE Advisor
O: 727.280.5592
C: 239.272.7006
jwollman@kwcommercial.com
FL #SL3237174

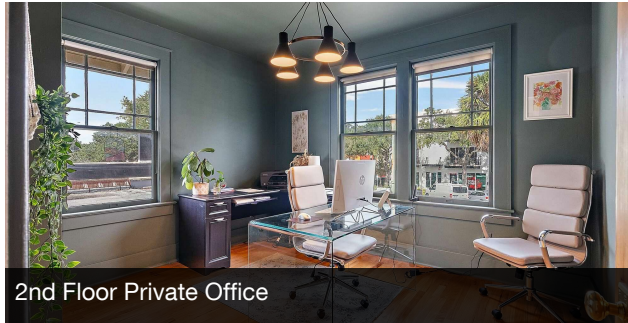
KW COMMERCIAL
360 Central Ave. #600
St Petersburg, FL 33701

Each Office Independently Owned and Operated

OFFICE FOR SALE

GRAND CENTRAL FLATS

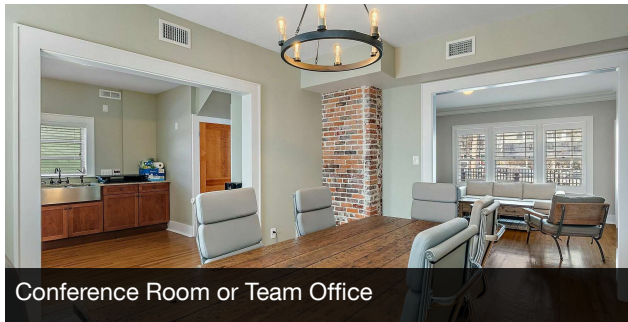
2632 Central Ave, St Petersburg, FL 33712



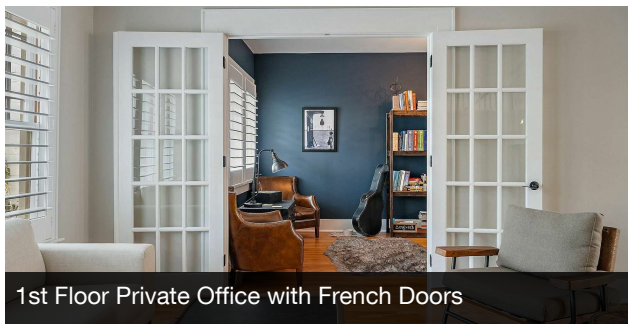
2nd Floor Private Office



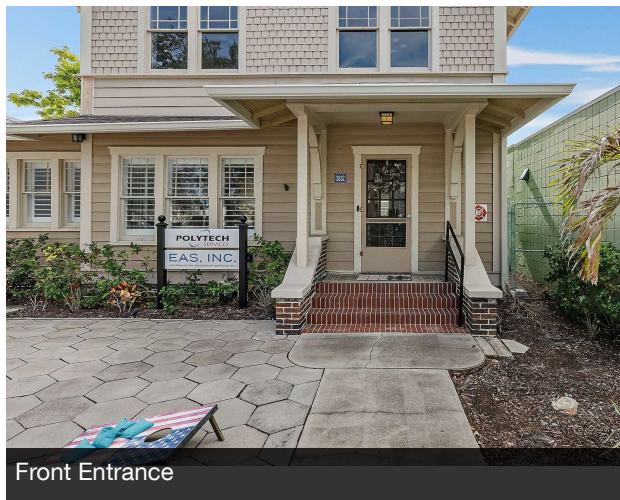
Bandit Coffee Neighborhood Cafe



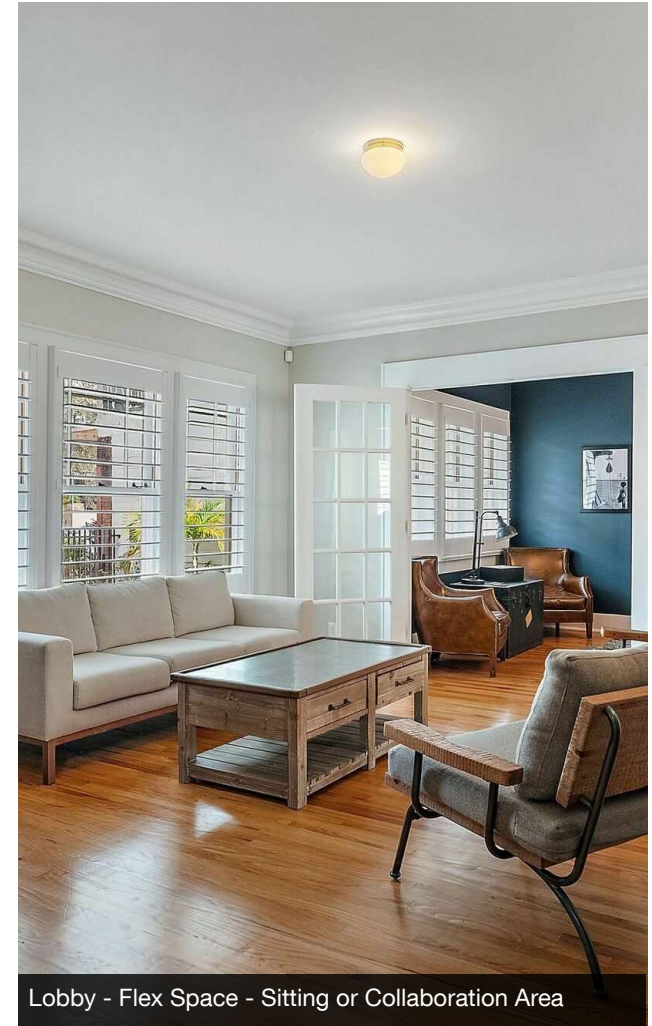
Conference Room or Team Office



1st Floor Private Office with French Doors



Front Entrance



Lobby - Flex Space - Sitting or Collaboration Area

We obtained the information above from sources we believe to be reliable. However, we have not verified its accuracy and make no guarantee, warranty or representation about it. It is submitted subject to the possibility of errors, omissions, change of price, rental or other conditions, prior sale, lease or financing, or withdrawal without notice. We include projections, opinions, assumptions or estimates for example only, and they may not represent current or future performance of the property. You and your tax and legal advisors should conduct your own investigation of the property and transaction.

JAKE WOLLMAN
CRE Advisor
O: 727.280.5592
C: 239.272.7006
jwollman@kwcommercial.com
FL #SL3237174

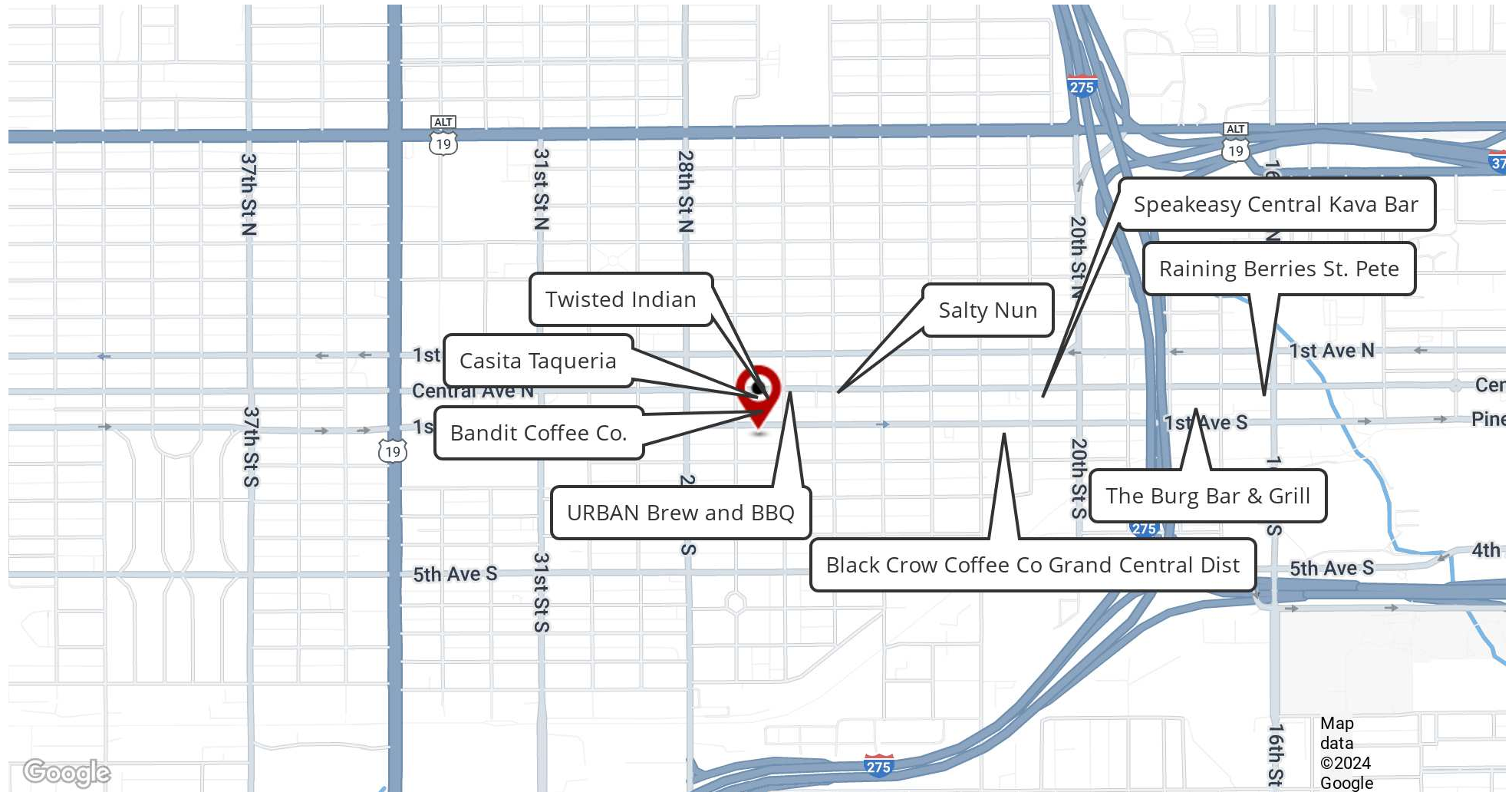
KW COMMERCIAL
360 Central Ave. #600
St Petersburg, FL 33701

Each Office Independently Owned and Operated

OFFICE FOR SALE

GRAND CENTRAL FLATS

2632 Central Ave, St Petersburg, FL 33712



We obtained the information above from sources we believe to be reliable. However, we have not verified its accuracy and make no guarantee, warranty or representation about it. It is submitted subject to the possibility of errors, omissions, change of price, rental or other conditions, prior sale, lease or financing, or withdrawal without notice. We include projections, opinions, assumptions or estimates for example only, and they may not represent current or future performance of the property. You and your tax and legal advisors should conduct your own investigation of the property and transaction.

JAKE WOLLMAN
CRE Advisor
O: 727.280.5592
C: 239.272.7006
jwollman@kwcommercial.com
FL #SL3237174

KW COMMERCIAL
360 Central Ave. #600
St Petersburg, FL 33701

Each Office Independently Owned and Operated