

AVAILABLE FOR LEASE OR SALE



# 2333 DELANTE ST

HALTOM CITY, TEXAS 76117



## PROPERTY HIGHLIGHTS

- 12,948 SF
- 2,345 SF office (plus an additional 1,912 SF mezzanine)
- Clear height: 14'–16'
- Zoning: M-2 Heavy Industrial
- Four (4) grade level doors
  - Two (2) 12' x 14'
  - Two (2) 10' x 10'

# 2333 DELANTE ST

12,948 SF AVAILABLE



AVAILABLE YARD SPACE THAT PROVIDES ACCESS TO MIDWAY RD

FOR MORE INFORMATION, CONTACT:

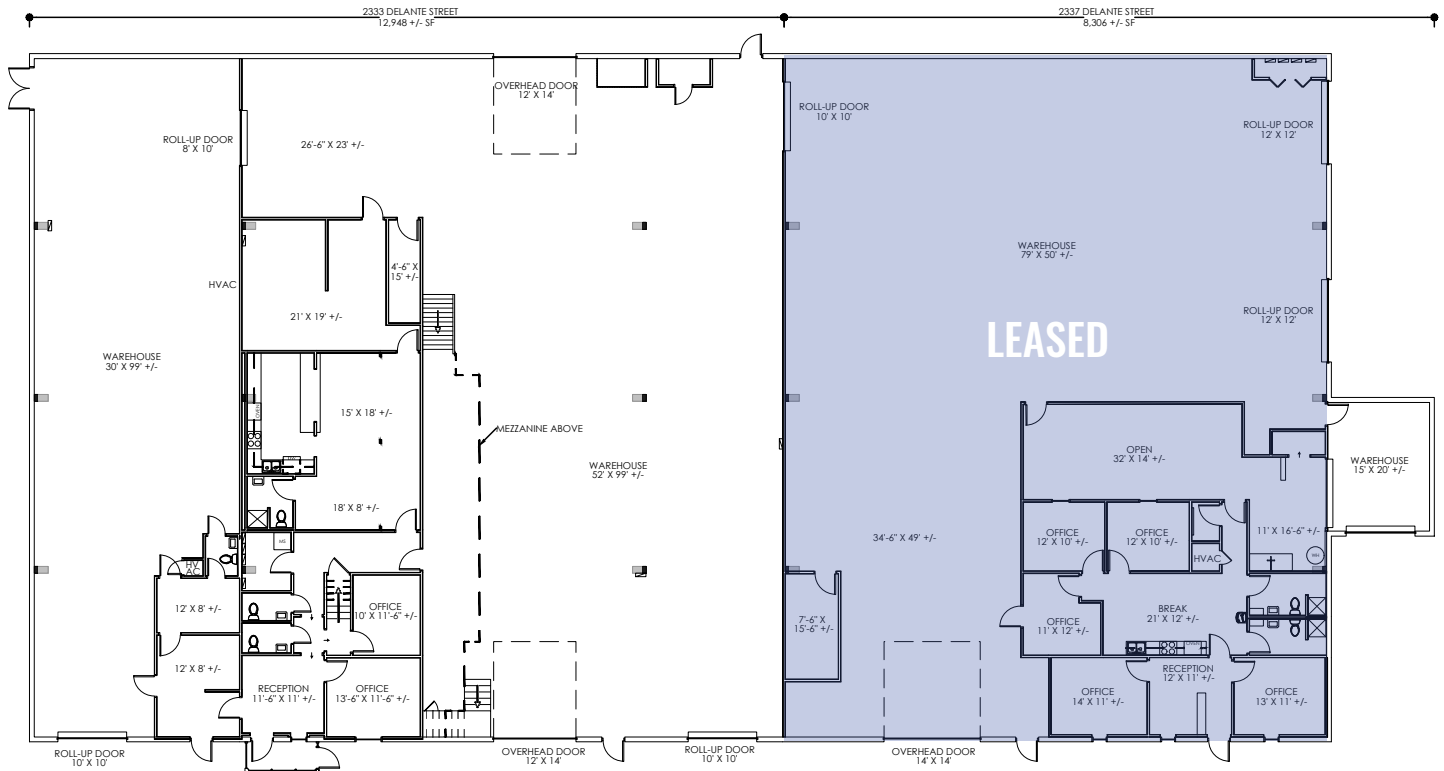
**GARRISON LACKEY** | 956-793-9657  
MANAGING DIRECTOR | GLACKEY@HPITX.COM

**GEORGE JENNINGS** | 817-706-0103  
MANAGING DIRECTOR | GJENNINGS@HPITX.COM



# 2333 DELANTE ST

## 12,948 SF AVAILABLE



FOR MORE INFORMATION, CONTACT:

**GARRISON LACKEY** | 956-793-9657  
MANAGING DIRECTOR | GLACKEY@HPITX.COM

**GEORGE JENNINGS** | 817-706-0103  
MANAGING DIRECTOR | GIENNINGS@HPITX.COM



# 2333 DELANTE ST

## 12,948 SF AVAILABLE



### LOCATION:



FOR MORE INFORMATION, CONTACT:

**GARRISON LACKEY**  
MANAGING DIRECTOR

956-793-9657  
GLACKEY@HPITX.COM

**GEORGE JENNINGS**  
MANAGING DIRECTOR

817-706-0103  
GIENNINGS@HPITX.COM

