



Available February 1, 2025

# ±5,900 SF FLEX BUILDING FOR LEASE

4 Progress Rd,  
Greenville, SC 29607



**LEE & ASSOCIATES**  
COMMERCIAL REAL ESTATE SERVICES

**Micah Williams**  
Senior Associate  
mwilliams@lee-associates.com

**Kevin Bentley, SIOR**  
EVP/Principal  
kbentley@lee-associates.com

**Randall Bentley, SIOR, CCIM**  
President/Managing Principal  
rbentley@lee-associates.com

**Justin Bentley**  
Associate  
jbentley@lee-associates.com

**864.704.1040**  
LeeUpstate.com

**Lease Rate:  
Call For Pricing**

- ±2,400 SF Office Space
- ±3,500 SF Warehouse Space
- One (1) Dock Door
- Small Fenced Laydown Area



**MAJOR INTERSTATE**  
LESS THAN 2 MILES  
FROM I-85



**OFFICE**  
2,400 SF OF MOVE  
IN READY OFFICE



**MAJOR INTERSTATE**  
LESS THAN 1 MILE  
FROM I-385



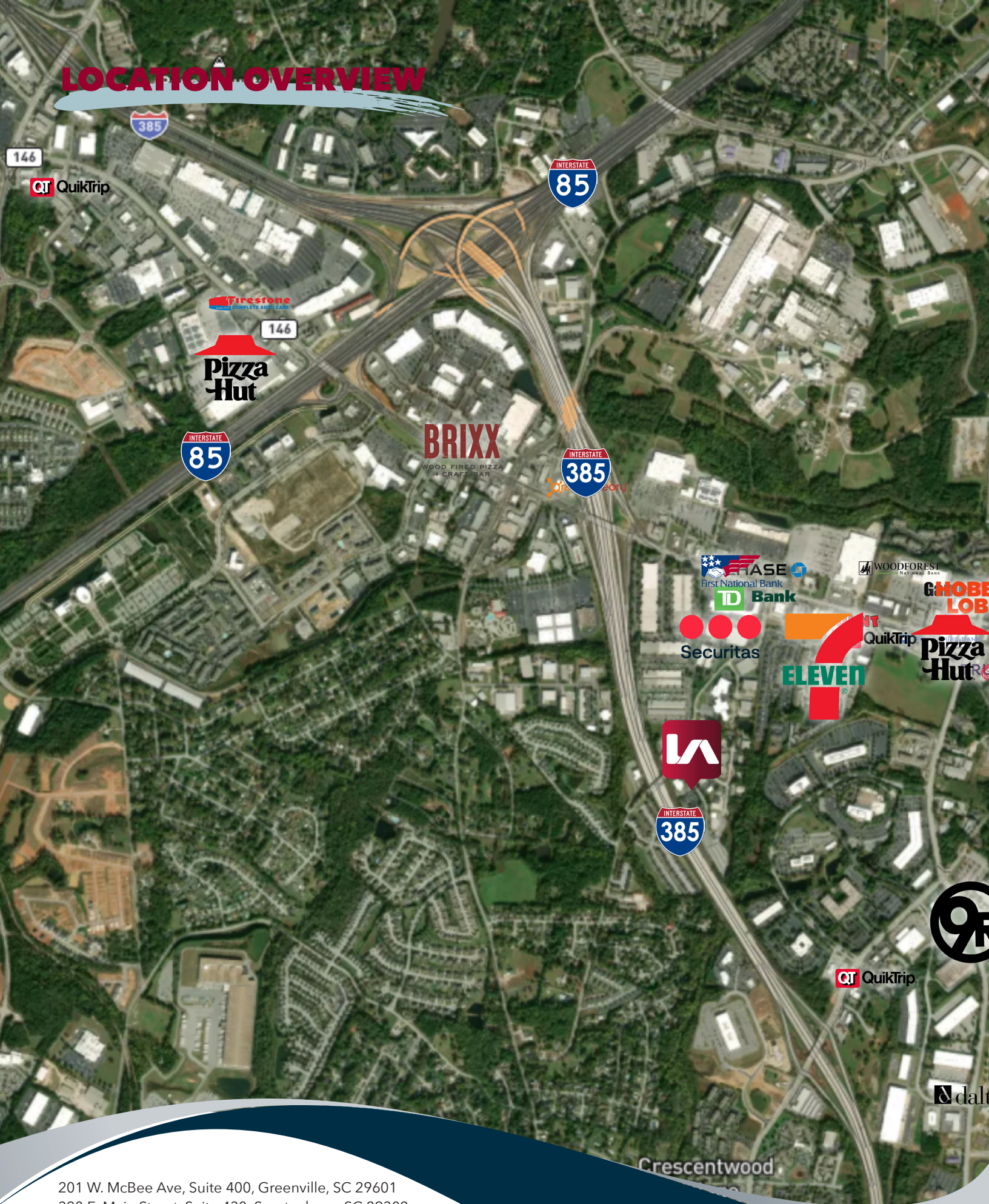
**AVAILABILITY**  
AVAILABLE  
FEBRUARY 1, 2025

# PROPERTY OVERVIEW

PROPERTY NAME	4 Progress Road
TYPE	Flex
TOTAL AVAILABLE SF	±5,900SF
TOTAL BUILDING SF	±5,900SF
TAX MAP #	0547030105220
COUNTY	Greenville
CITY LIMITS	No
ZONING	S-1
YEAR BUILT	1983
CONSTRUCTION TYPE	Metal
ROOF	Metal
WAREHOUSE SF	±3,500 SF
OFFICE SF	±2,400 SF
CEILING HEIGHT	12'
DOCK DOORS	One (1)
COLUMN SPACING	20'
LIGHTING	Fluorescent
SPRINKLERS	None
PARKING	15
UTILITIES	All Utilities Present
SPECIAL FEATURES	Small Fenced Laydown Yard Area



# LOCATION OVERVIEW

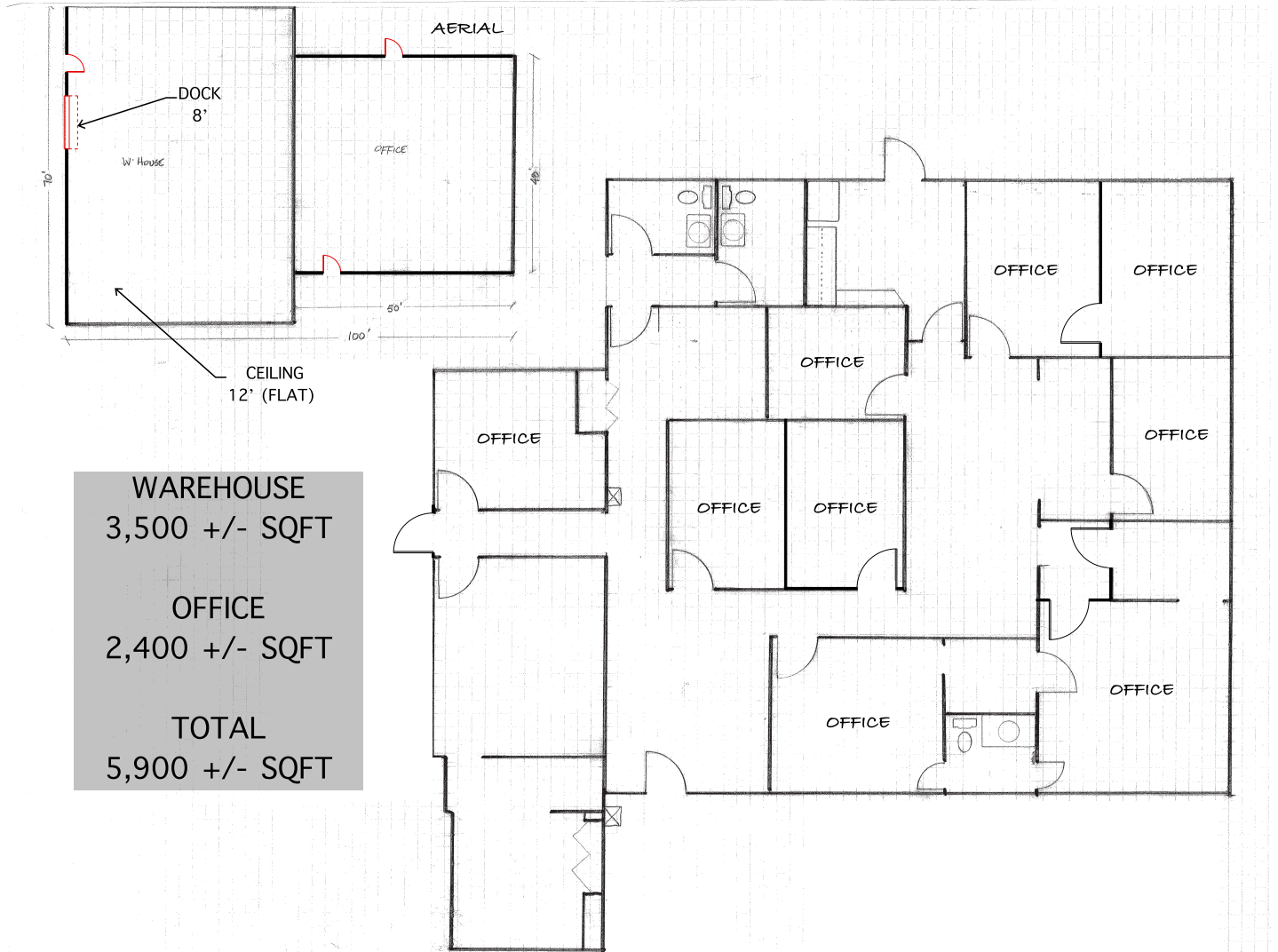


201 W. McBee Ave, Suite 400, Greenville, SC 29601  
320 E. Main Street, Suite 430, Spartanburg, SC 29302  
[LeeUpstate.com](http://LeeUpstate.com) | 864.704.1040

# PROPERTY PHOTOS



# FLOOR PLAN





# LEARN MORE GIVE US A CALL



**LEE & ASSOCIATES**  
COMMERCIAL REAL ESTATE SERVICES

**864.704.1040**  
**LeeUpstate.com**

**GREENVILLE OFFICE**  
201 W. McBee Ave, Suite 400  
Greenville, SC 29601

**SPARTANBURG OFFICE**  
320 E. Main Street, Suite 430  
Spartanburg, SC 29302

All information furnished regarding the properties and information in this packet is from sources deemed reliable, but no warranty or representation is made to the accuracy thereof and same is submitted to errors, omissions, change of price, rental or other conditions prior to sale, lease or financing or withdrawal without notice. No liability of any kind is to be imposed on the broker herein.



**Micah Williams**  
Senior Associate  
864.477.0455  
mwilliams@lee-associates.com



**Randall Bentley, SIOR, CCIM**  
President/ Managing Principal  
864.444.2842  
rbentley@lee-associates.com



**Kevin Bentley, SIOR**  
EVP/Principal  
864.444.1196  
kbentley@lee-associates.com



**Justin Bentley**  
Associate  
864.449.1059  
jbentley@lee-associates.com