

46980 LIBERTY DRIVE  
WIXOM, MICHIGAN

INDUSTRIAL FOR SALE  
13,324 Square Feet Available



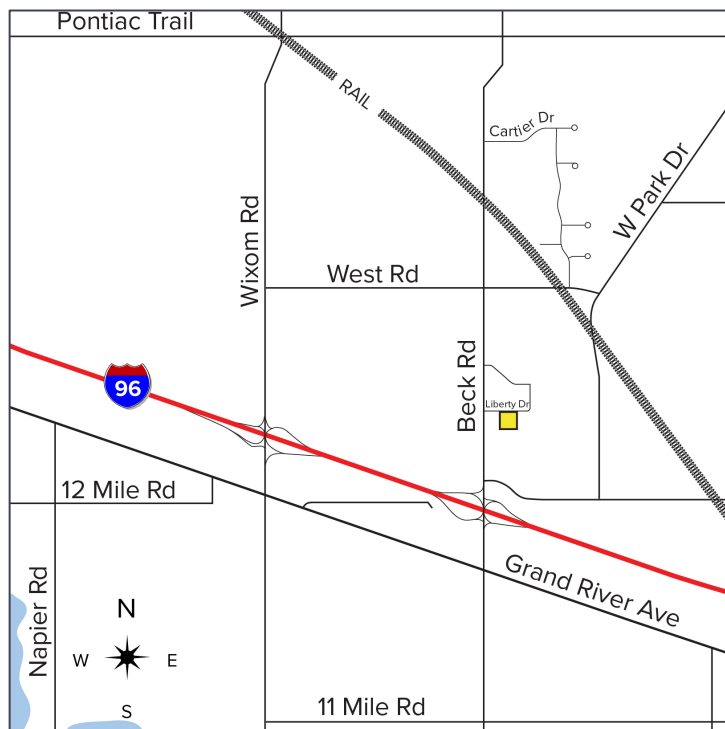
**SIGNATURE  
ASSOCIATES**  
KNOW SIGNATURE | KNOW RESULTS

## WIXOM BUSINESS CENTER



### PROPERTY FEATURES

- 13,324 square feet available
- 3,331 square feet office
- 18' – 23' clear height
- 1600/1200 amps, 480/250 volts, heavy power
- (2) 12' x 14' grade level doors
- (2) truckwells were filled in and capped and could be restored
- 2,000 square foot mezzanine
- Prime location, convenient access to I-96 via Beck Road
- Well-maintained facility
- Duplex potential
- Buss duct and epoxy floors
- Sale Price: Contact Broker



For more information, please contact:

**JEFF LEMANSKI**  
(248) 359 0641  
jlemanski@signatureassociates.com

**STEVE GORDON**  
(248) 948 0101  
sgordon@signatureassociates.com

**SIGNATURE ASSOCIATES**  
One Towne Square, Suite 1200  
Southfield, MI 48076  
www.signatureassociates.com

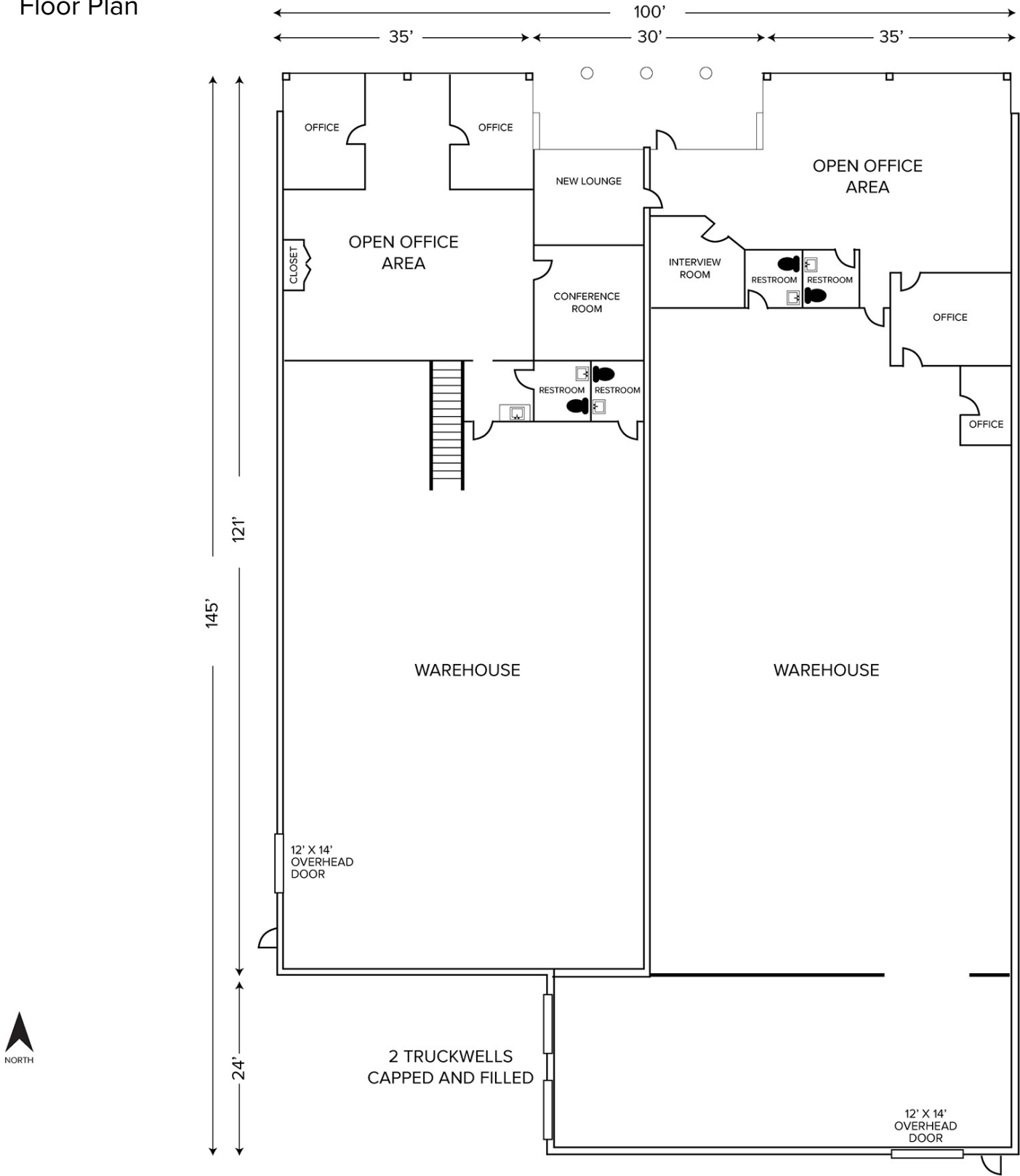
13,324  
Square Feet  
AVAILABLE

Information is subject to verification and no liability for errors or omissions is assumed. Price is subject to change and listing withdrawal.

46980 Liberty Drive – Wixom, Michigan  
Industrial For Sale

13,324  
Square Feet  
AVAILABLE

Floor Plan



For more information, please contact:

**JEFF LEMANSKI**  
(248) 359 0641  
jlemanski@signatureassociates.com

**STEVE GORDON**  
(248) 948 0101  
sgordon@signatureassociates.com

**SIGNATURE ASSOCIATES**  
One Towne Square, Suite 1200  
Southfield, MI 48076  
www.signatureassociates.com

Information is subject to verification and no liability for errors or omissions is assumed. Price is subject to change and listing withdrawal.

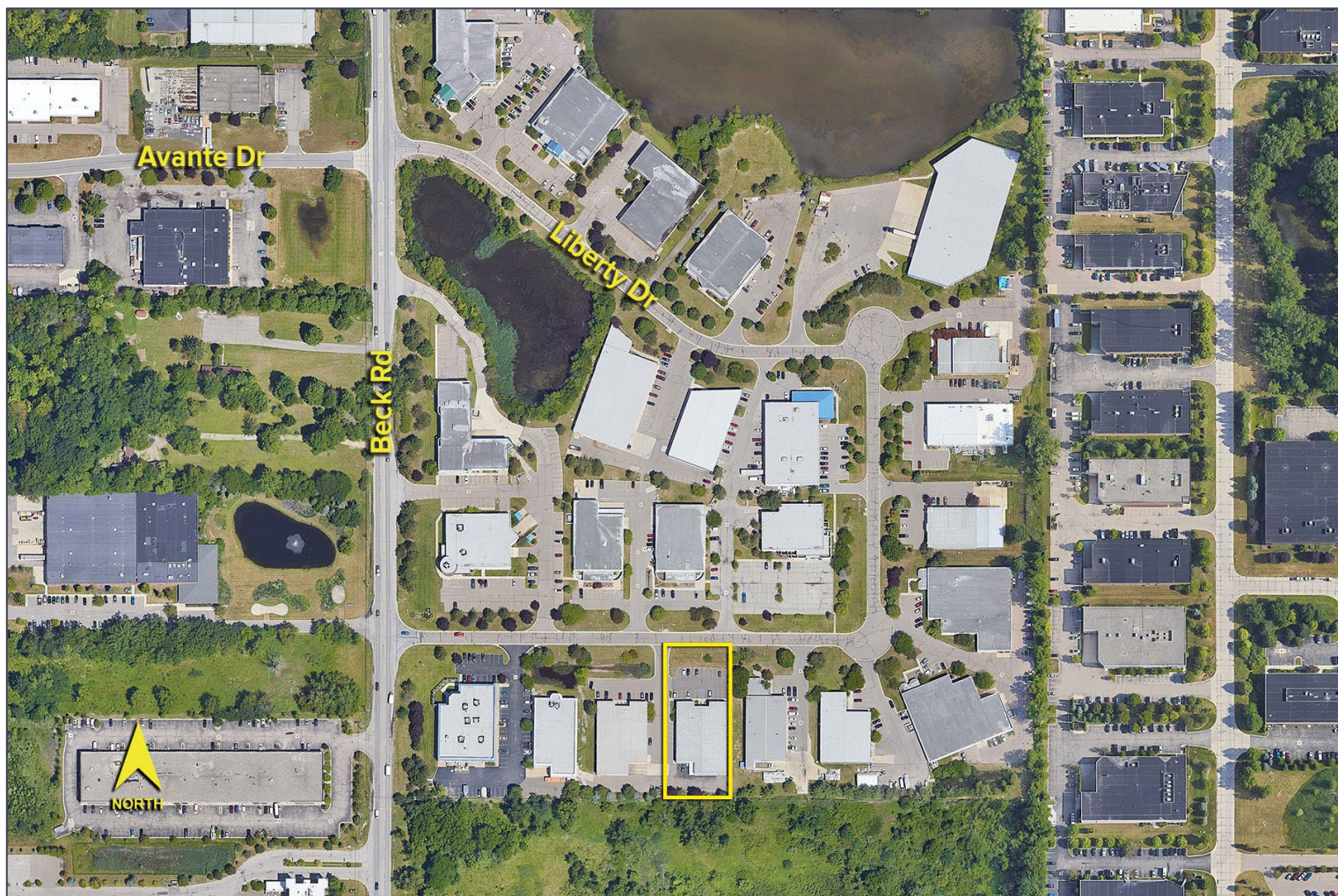


# 46980 Liberty Drive – Wixom, Michigan

## Industrial For Sale

13,324  
Square Feet  
AVAILABLE

Aerial



For more information, please contact:

**JEFF LEMANSKI**

(248) 359 0641

[jlemanski@signatureassociates.com](mailto:jlemanski@signatureassociates.com)

**STEVE GORDON**

(248) 948 0101

[sgordon@signatureassociates.com](mailto:sgordon@signatureassociates.com)

**SIGNATURE ASSOCIATES**

One Towne Square, Suite 1200

Southfield, MI 48076

[www.signatureassociates.com](http://www.signatureassociates.com)

Information is subject to verification and no liability for errors or omissions is assumed. Price is subject to change and listing withdrawal.