

# CHERRY STREET COMMONS

113 Cherry Street  
Johnson City, TN 37604

## Location

Intersection of W State of Franklin Road and S Roan Street in downtown Johnson City

## Available for Lease

Suite 40: 2,227 SF  
\$13/SF/year NNN

## Highlights

Ideal location for retail or office

Approx. 0.5 miles from I-26, exit 23

Approx. 1 mile from East Tennessee State University

Located at a busy, lighted intersection

Large public parking lot directly in front of site

Walking distance to downtown restaurants and shops

## Traffic Counts

W State of Franklin Rd: 16,224 (2024)

## Demographics

(2025 Est.)	3 mile	5 mile	10 mile
Population	53,027	81,670	162,112
Median HH Income	\$49,399	\$53,417	\$60,483
Median Age	35.1	37.7	41.6

## Contact

**Shannon K. Castillo**

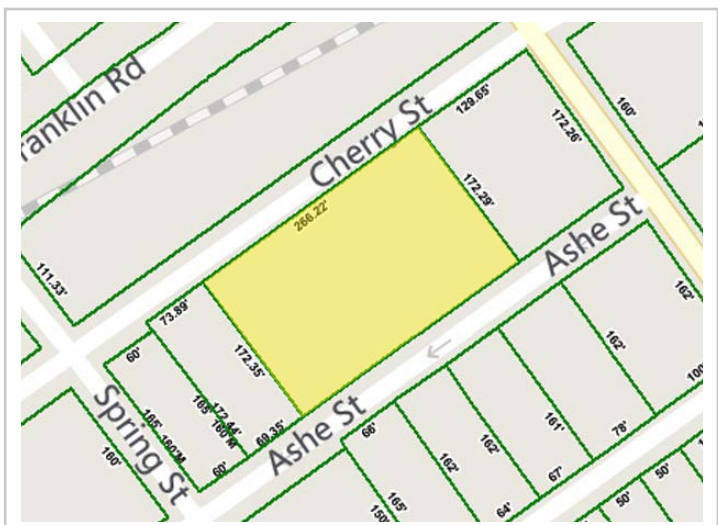
Broker

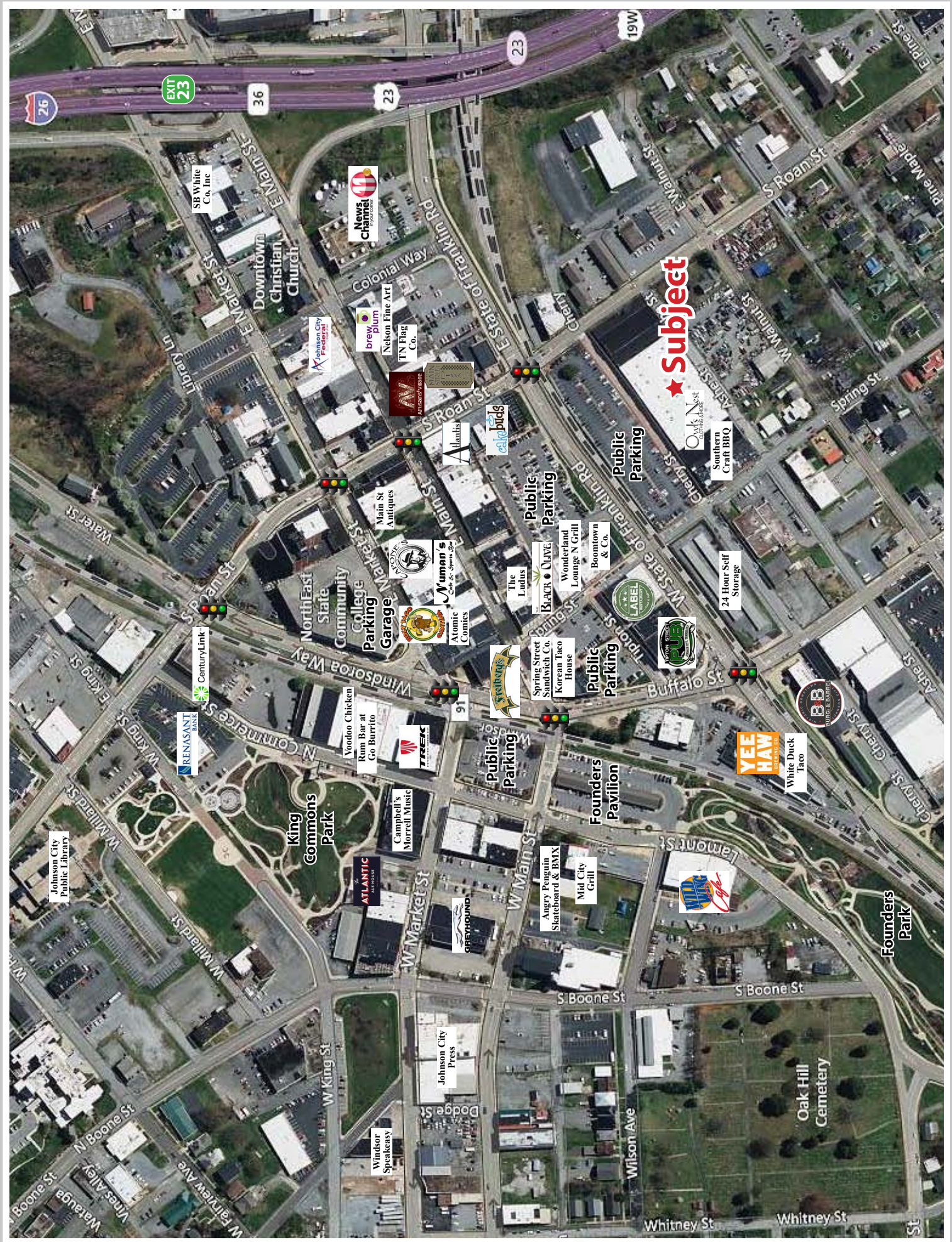
shannon@mitchcox.com

📞 423-282-6582 | 📠 423-282-5903

www.mitchcox.com

**Owner/Agent**





★ Subject

SB White Co, Inc

News Channel 44

Downtown Christian Church

Johnson City Pedigree

brew plurn

Nelson Fine Art

TN Flag Co.

Windsor Speakeasy

Atomic Comics

Wuman's

Public Parking

Public Parking

Public Parking

Oak Nest

Southern Craft BBQ

Johnson City Public Library

King Commons Park

Voodoo Chicken

Rum Bar at Go Burrito

TREK

Campbell's Morrel Music

Founders Pavilion

Public Parking

White Duck Taco

BB

ATLANTIC

Greyhound

Angry Penguin Skateboard & BMX

Mid City Grill

Public Parking

Public Parking

Public Parking

YEE HAW

White Duck Taco

Founders Park

Oak Hill Cemetery

Windsor Speakeasy

Johnson City Press

Public Parking

Public Parking

Public Parking

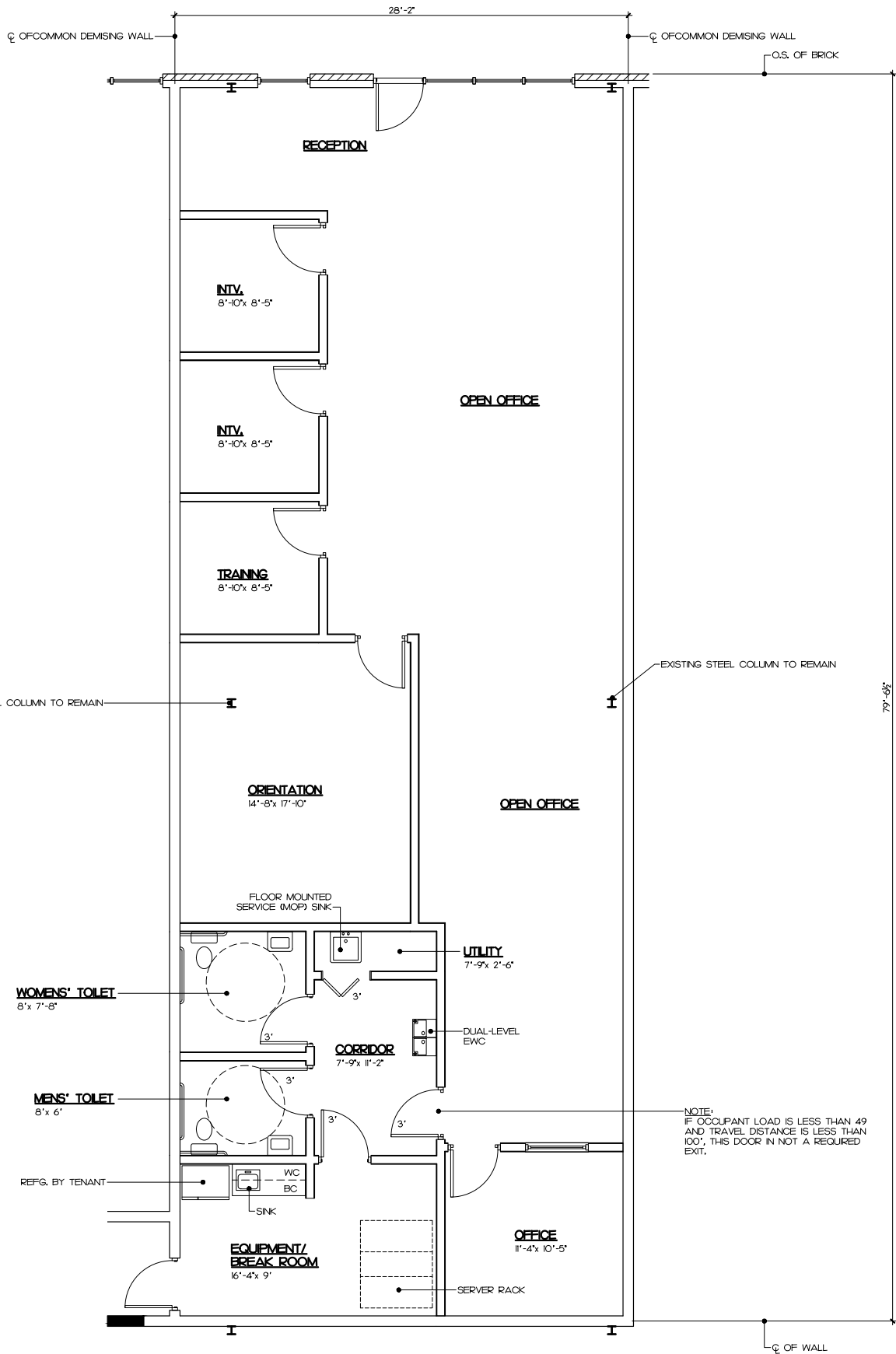
Public Parking

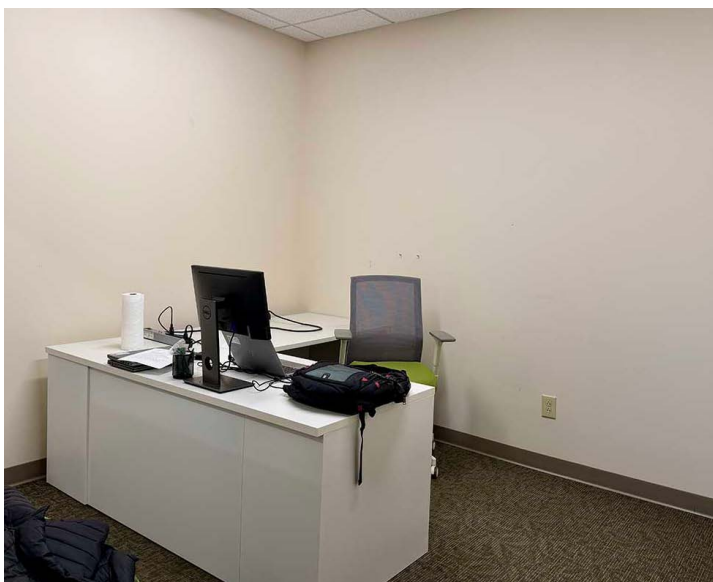
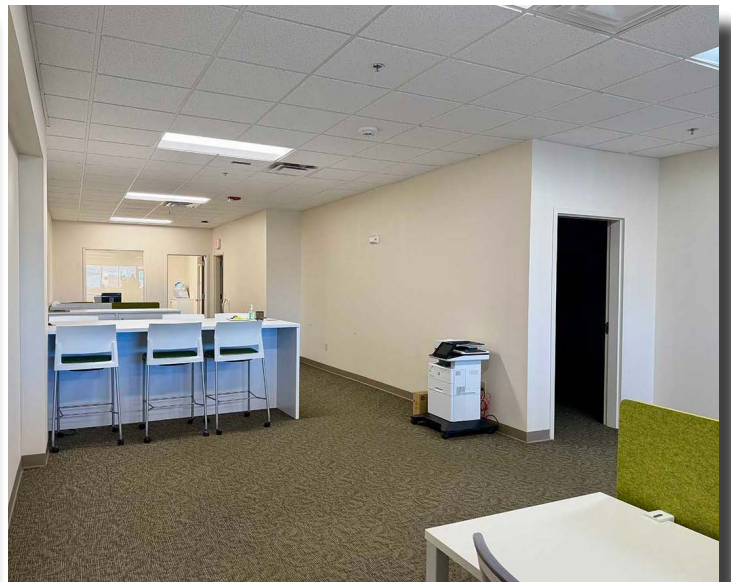
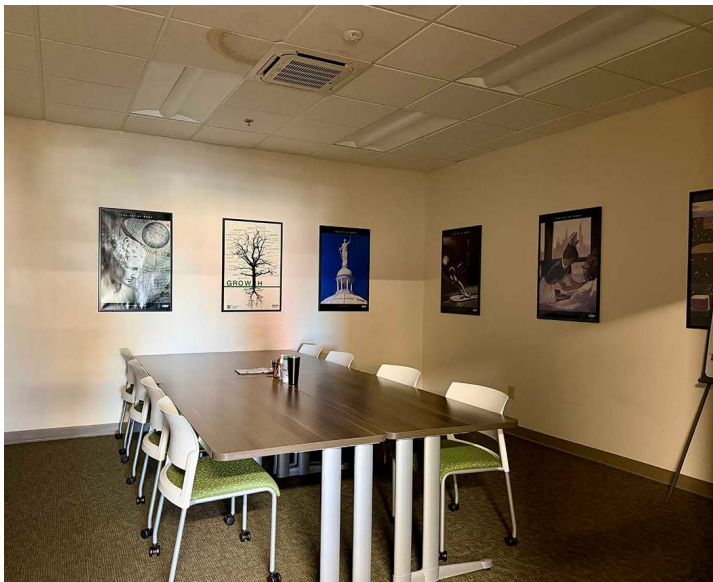
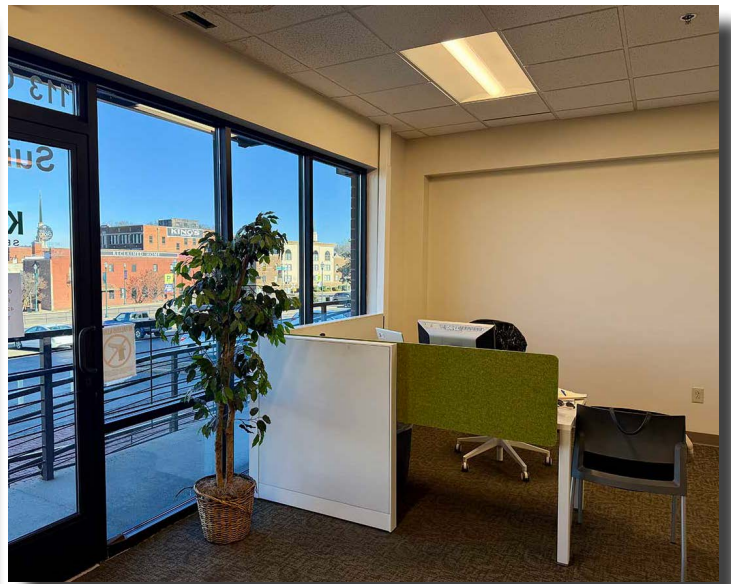
Public Parking

Public Parking

Public Parking

Public Parking





**MITCH COX**  
REALTOR, INC.

2304 Silverdale Drive, Suite 200, Johnson City, TN 37601  
423-282-6582 (o) 423-282-5903 (f) [www.mitchcox.com](http://www.mitchcox.com)