



Newly Renovated Office/Medical Space

67A Mountain Blvd, Warren Twp,
Somerset County, New Jersey

PROPERTY DESCRIPTION

Recently renovated 28,570 SF two story brick/ block constructed office building located within the center of Warren. Renovations include new lobby, common area upgrades, new high efficiency HVAC, 24 hour secure access, common area security monitoring, bathrooms and exterior improvements including new roof, landscaping and new monument sign. Less than 3 miles South of I-78, Exit 36 and 1.8 miles North of SR 22 & Warrentville Rd.

AVAILABLE SPACE

Unit C: 6,809 SF Rentable
Potentially Divisible to:
Unit C1: 2,816 SF Rentable
Unit C2: 3,993 SF Rentable

RENTAL RATES

\$19.50 psf plus tenant Electric

OCCUPANCY

Immediate

PARKING

88 On-site parking spaces

ZONING

BR40 Zone allows a wide range of professional office uses, including medical/dental

FOR ADDITIONAL INFORMATION CONTACT EXCLUSIVE LEASING AGENT

Christian Harrington

Associate- Brokerage Department

908.604.6900 x 119

charrington@silbertrealestate.com

SILBERT
REALTY & MANAGEMENT COMPANY, INC.

152 Liberty Corner Road
Suite 203
Warren, NJ 07059

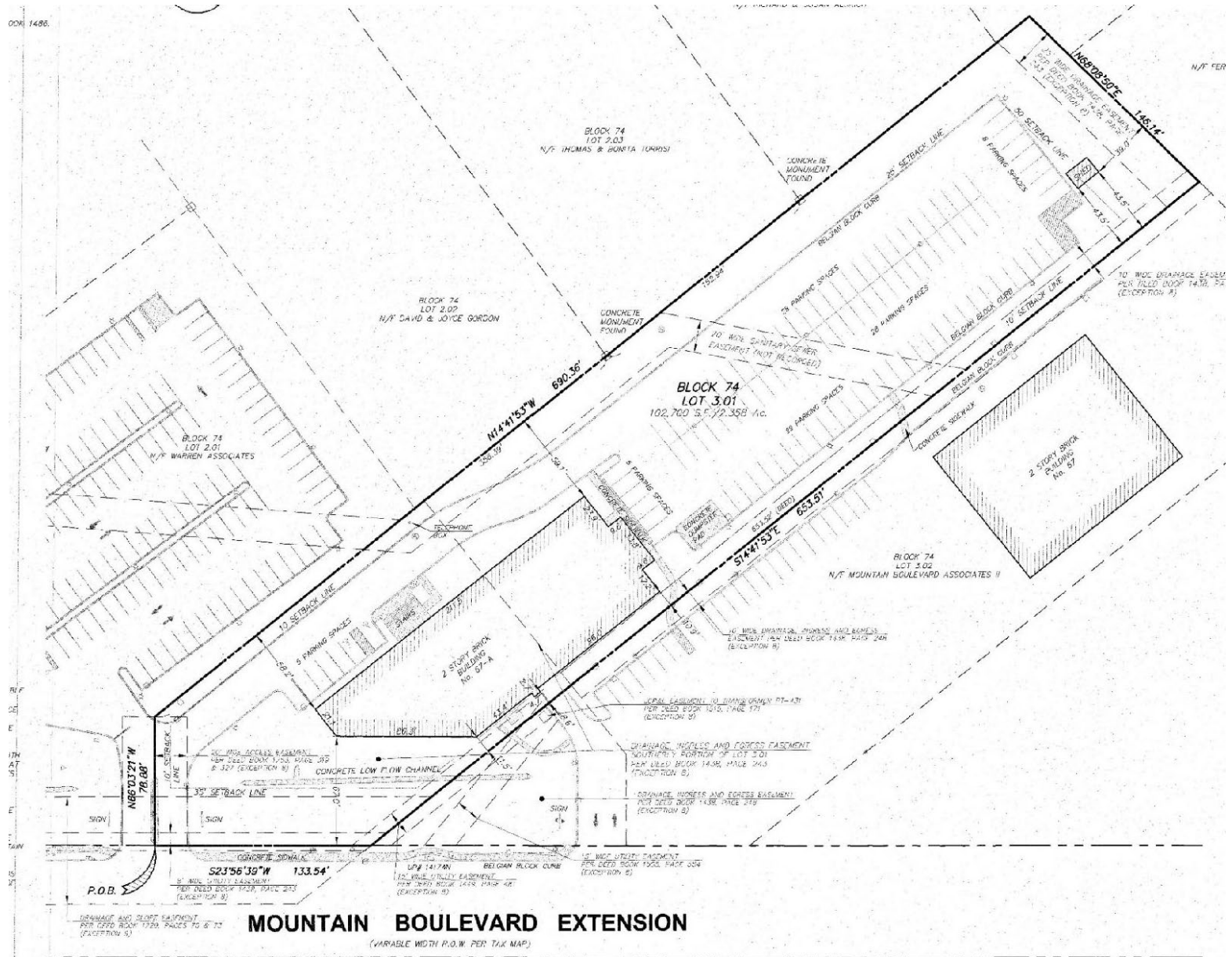


Visit Our Website: WWW.SilbertRealEstate.com

Lobby Photos & Monument Sign



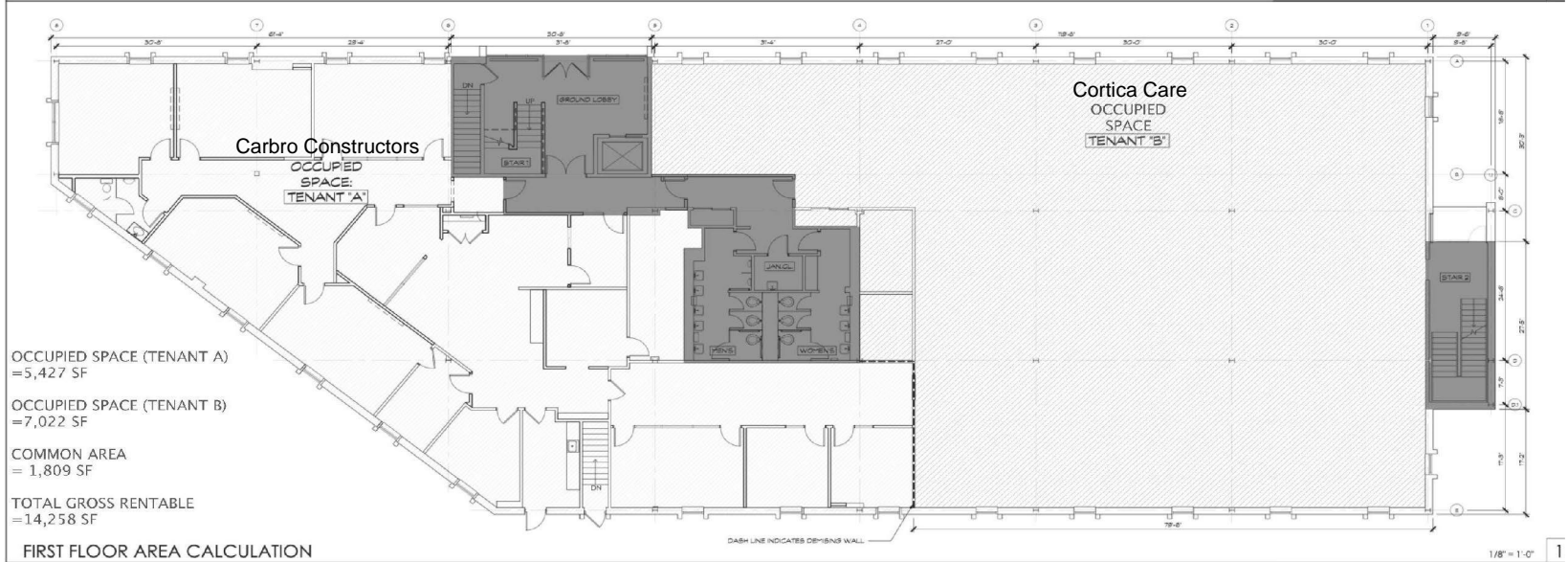
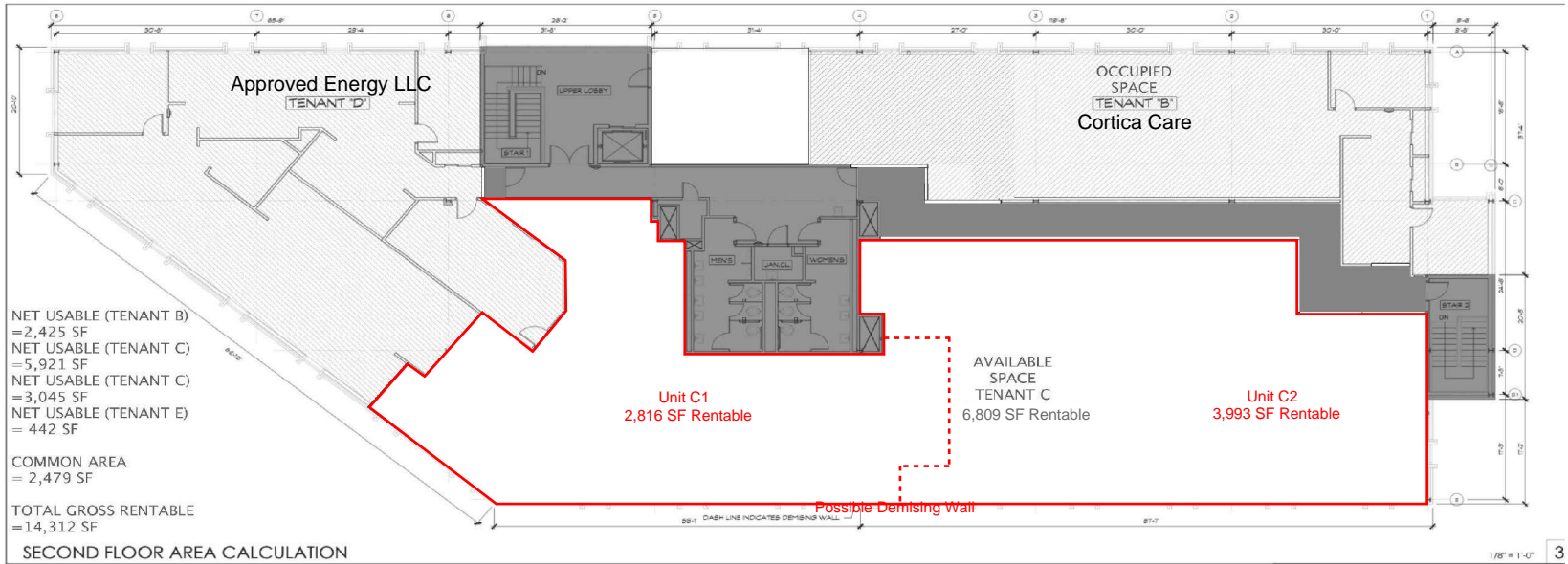
Site Plan



MOUNTAIN BOULEVARD EXTENSION

(VARIABLE WIDTH P.O.W. PER T&E MAP)

Leasing Plan



Trade Aerial

