

FOR SUBLEASE
515 Kansas Avenue
Topeka, KS 66603



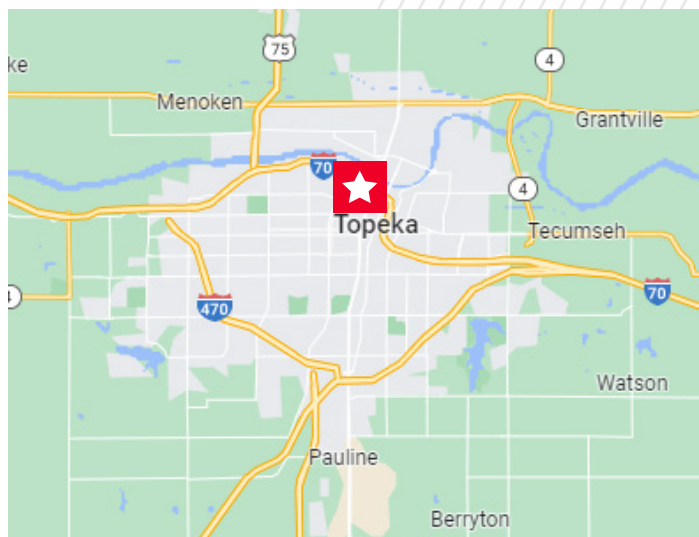
9,323 SF

PROPERTY HIGHLIGHTS

- 9,323 RSF available on the 3rd floor
- Sublease through August 2024
- Furniture available
- 20 on-site parking spaces available
- Within walking distance of numerous restaurants and coffee shops

Contact

CONOR TWIBELL
Director
+1 816 412 0244
conor.twibell@cushwake.com

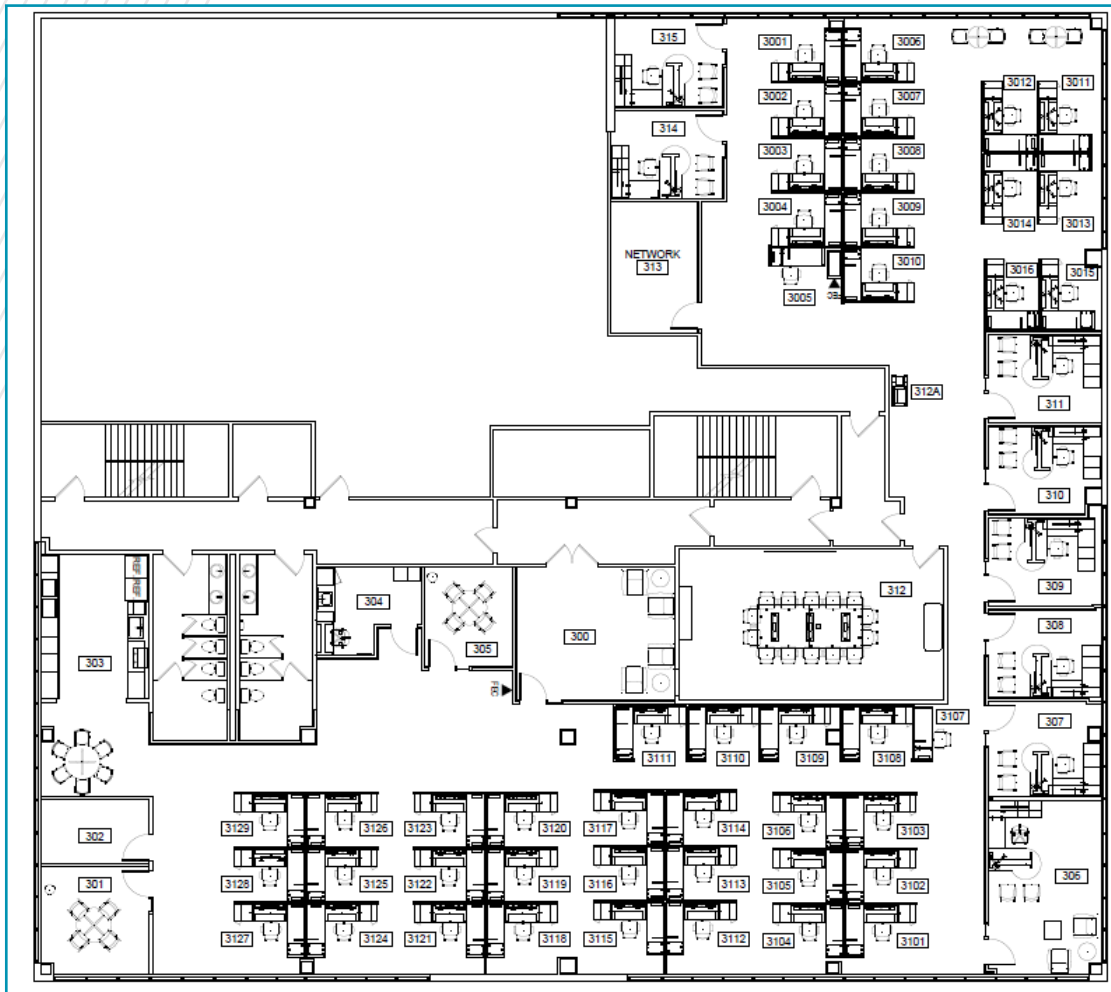


©2023 Cushman & Wakefield. All rights reserved. The information contained in this communication is strictly confidential. This information has been obtained from sources believed to be reliable but has not been verified. No warranty or representation, express or implied, is made as to the condition of the property (or properties) referenced herein or as to the accuracy or completeness of the information contained herein, and same is submitted subject to errors, omissions, change of price, rental or other conditions, withdrawal without notice, and to any special listing conditions imposed by the property owner(s). Any projections, opinions or estimates are subject to uncertainty and do not signify current or future property performance.

FOR SUBLEASE
515 Kansas Avenue
Topeka, KS 66603



Floor Plan/Third Floor



Contact

CONOR TWIBELL
Director
+1 816 412 0244
conor.twibell@cushwake.com

FOR SUBLEASE
515 Kansas Avenue
Topeka, KS 66603



Contact

CONOR TWIBELL
Director
+1 816 412 0244
conor.twibell@cushwake.com

©2023 Cushman & Wakefield. All rights reserved. The information contained in this communication is strictly confidential. This information has been obtained from sources believed to be reliable but has not been verified. No warranty or representation, express or implied, is made as to the condition of the property (or properties) referenced herein or as to the accuracy or completeness of the information contained herein, and same is submitted subject to errors, omissions, change of price, rental or other conditions, withdrawal without notice, and to any special listing conditions imposed by the property owner(s). Any projections, opinions or estimates are subject to uncertainty and do not signify current or future property performance.