

1320 North Cicero Avenue

Chicago, IL 60651



Property Description

Solid three course brick 5,500 square foot barrell truss building. Newer roof with 5 parking spaces. 1 (10' x 10') drive in door. Clear height 11'-16' foot. Electrical 120-240V/1 and 3 phase.

Property Highlights

- 5,500 SF office building
- Prime location in Chicago
- Highly visible signage opportunity
- Ample parking for tenants and visitors
- Proximity to major transportation routes
- Natural light and open layout

Offering Summary

Sale Price:	\$490,000
Building Size:	5,500 SF

Demographics	0.3 Miles	0.5 Miles	1 Mile
Total Households	496	2,099	15,524
Total Population	1,459	5,726	44,902
Average HH Income	\$74,418	\$68,383	\$69,224

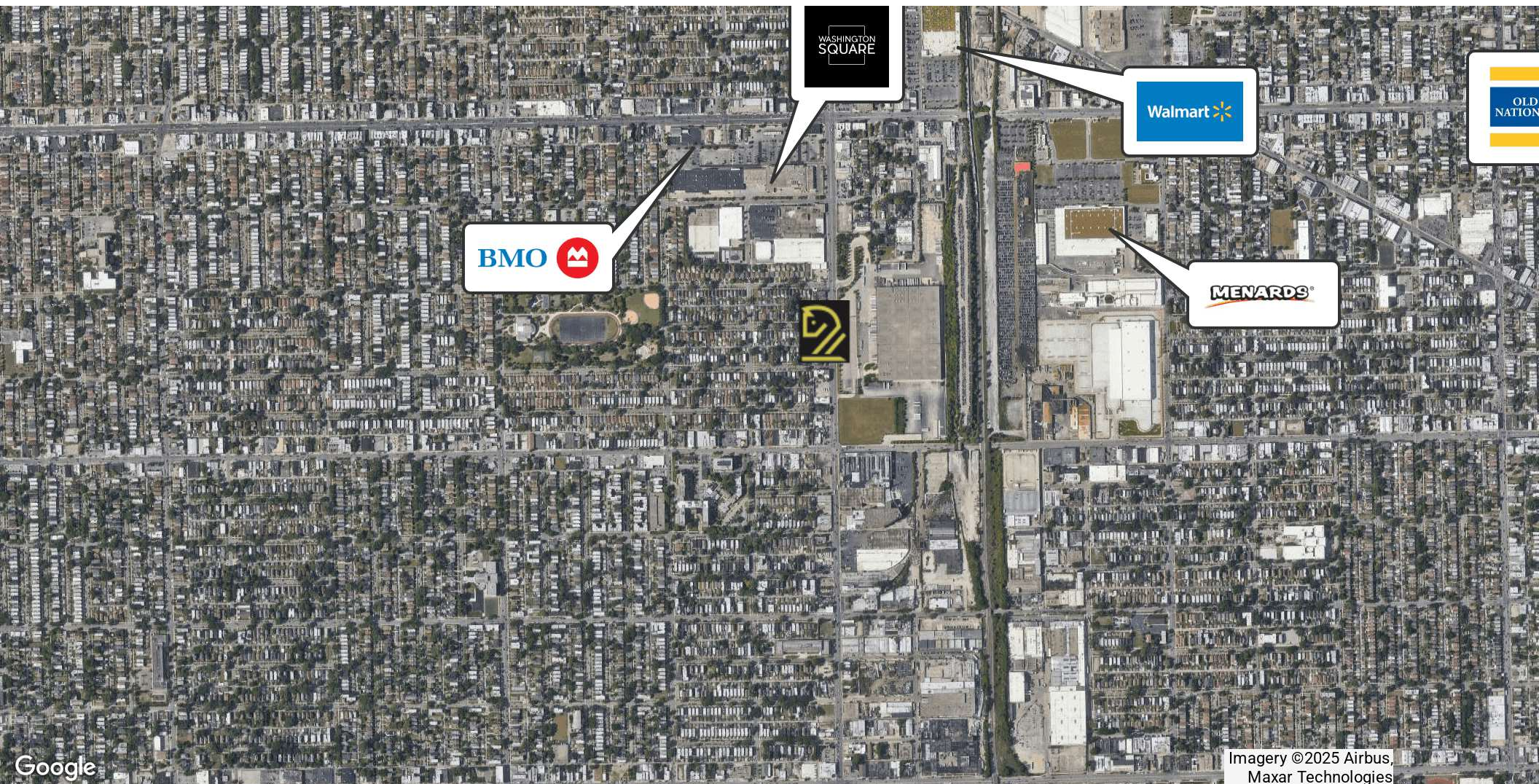
BILL GOLD | 773.792.3000 x251 | 847.736.8000 | bgold@troyrealtyltd.com

6625 N AVONDALE | CHICAGO, IL 60631 | 773.792.3000 | TROY-COMPANIES.COM

The information contained herein is from other sources believed to be reliable. No independent investigation of the property or the information contained herein has been made, and no representation is made as to the accuracy or completeness thereof. Terms are subject to errors, omissions and change without notice.

1320 North Cicero Avenue

Chicago, IL 60651



Imagery ©2025 Airbus,
Maxar Technologies

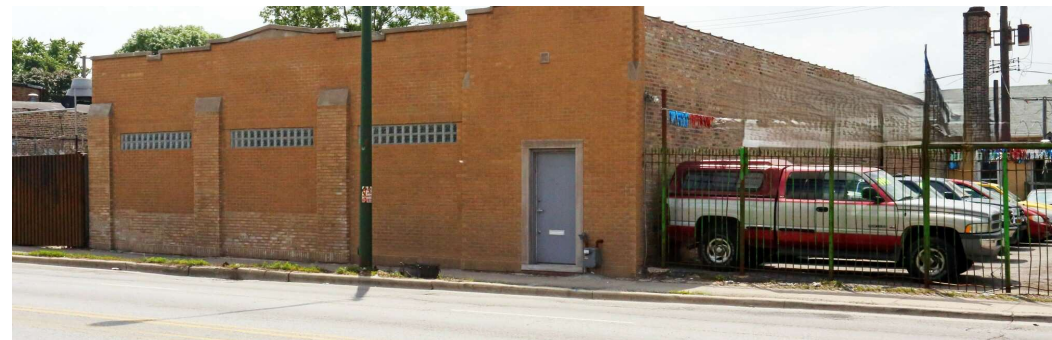
BILL GOLD | 773.792.3000 x251 | 847.736.8000 | bgold@troyrealtyltd.com

6625 N AVONDALE | CHICAGO, IL 60631 | 773.792.3000 | TROY-COMPANIES.COM

The information contained herein is from other sources believed to be reliable. No independent investigation of the property or the information contained herein has been made, and no representation is made as to the accuracy or completeness thereof. Terms are subject to errors, omissions and change without notice.

1320 North Cicero Avenue

Chicago, IL 60651



BILL GOLD | 773.792.3000 x251 | 847.736.8000 | bgold@troyrealtyltd.com

6625 N AVONDALE | CHICAGO, IL 60631 | 773.792.3000 | TROY-COMPANIES.COM

The information contained herein is from other sources believed to be reliable. No independent investigation of the property or the information contained herein has been made, and no representation is made as to the accuracy or completeness thereof. Terms are subject to errors, omissions and change without notice.

1320 North Cicero Avenue

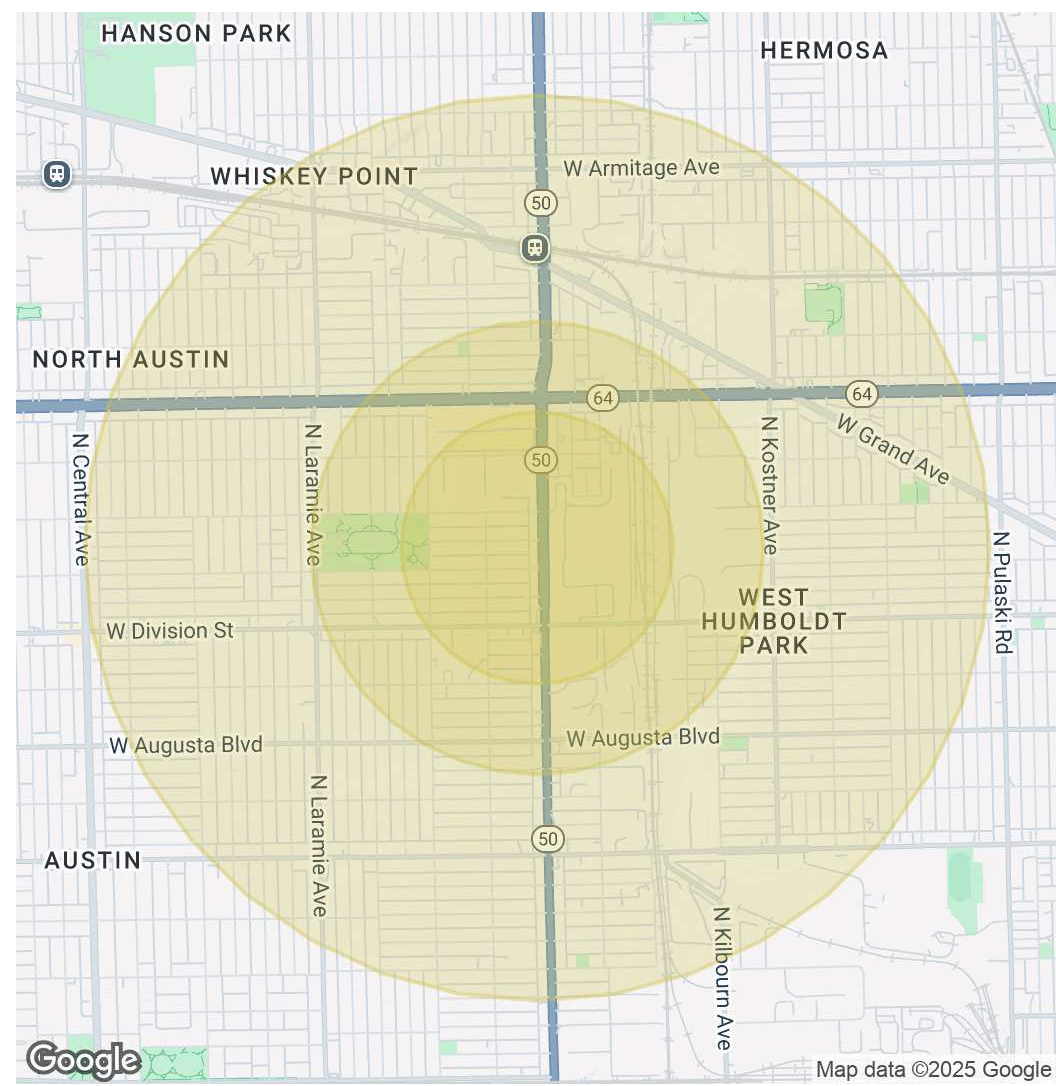
Chicago, IL 60651



Population	0.3 Miles	0.5 Miles	1 Mile
Total Population	1,459	5,726	44,902
Average Age	39	39	38
Average Age (Male)	37	38	37
Average Age (Female)	40	41	39

Households & Income	0.3 Miles	0.5 Miles	1 Mile
Total Households	496	2,099	15,524
# of Persons per HH	2.9	2.7	2.9
Average HH Income	\$74,418	\$68,383	\$69,224
Average House Value	\$358,816	\$319,908	\$295,576

Demographics data derived from AlphaMap



BILL GOLD | 773.792.3000 x251 | 847.736.8000 | bgold@troyrealtyltd.com
6625 N AVONDALE | CHICAGO, IL 60631 | 773.792.3000 | TROY-COMPANIES.COM

The information contained herein is from other sources believed to be reliable. No independent investigation of the property or the information contained herein has been made, and no representation is made as to the accuracy or completeness thereof. Terms are subject to errors, omissions and change without notice.