

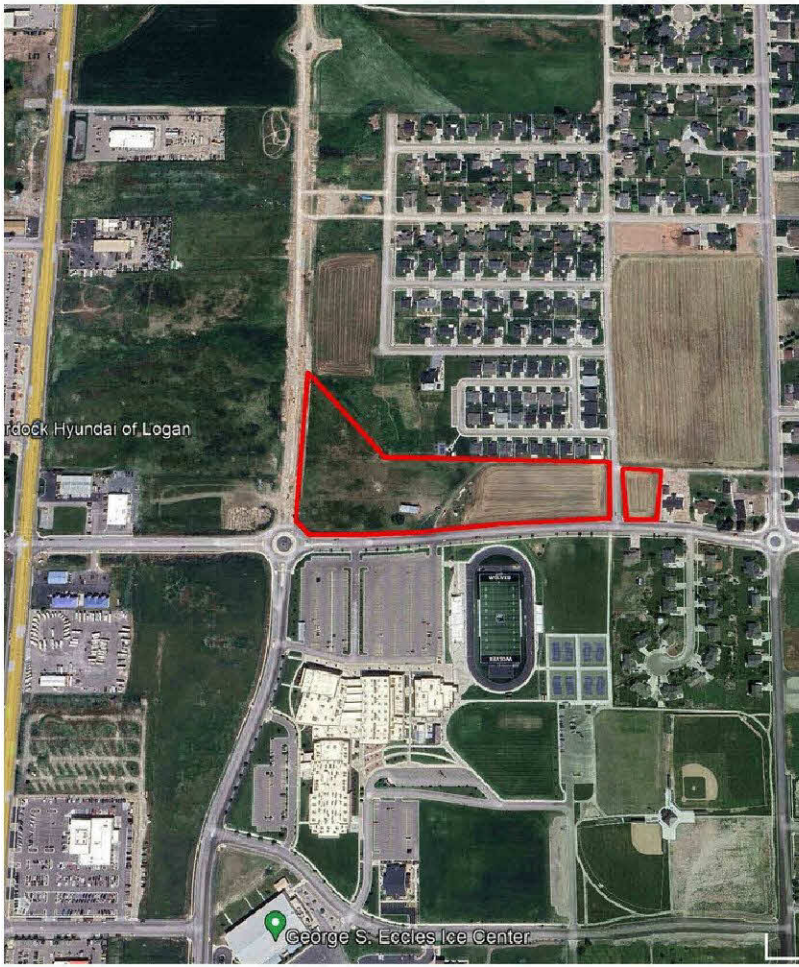


Hyde Park Mixed Use 11 acres

455 W 600 S, Hyde Park, UT 84318



Blake Parker
Parker Real Estate Services
45 E 200 N, Suite 200, Logan, UT 84321
blakehparker@gmail.com
(435) 755-9900 Ext: 208



Hyde Park Mixed Use 11 acres

\$6,000,000

Prime Mixed Use Zoned Multi Family and Commercial land in Hyde Park UT. Across from Green Canyon HS. All utilities are in the street on 600 S, 400 W and 200 W.....

In Hyde Park City's Master Planned Mixed Use Area. City Council approved Mixed Use Zoning. High Visibility, High Traffic area.....

- High traffic and visibility commercial corners
- Mixed Use Zoning
- One block off Hwy 89 lighted corner

For more information visit:

<https://www.loopnet.com/Listing/455-W-600-S-Hyde-Park-UT/31083259/>



Price:	\$6,000,000
Property Type:	Land
Property Subtype:	Commercial
Proposed Use:	Commercial
Sale Type:	Investment
Total Lot Size:	11.04 AC
No. Lots:	1
Zoning Description:	Mixed Use
APN / Parcel ID:	04-037-0034

455 W 600 S, Hyde Park, UT 84318

Prime Mixed Use Zoned Multi Family and Commercial land in Hyde Park UT. Across from Green Canyon HS. All utilities are in the street on 600 S, 400 W and 200 W.

Property Photos



NW corner of 200 W 600 S

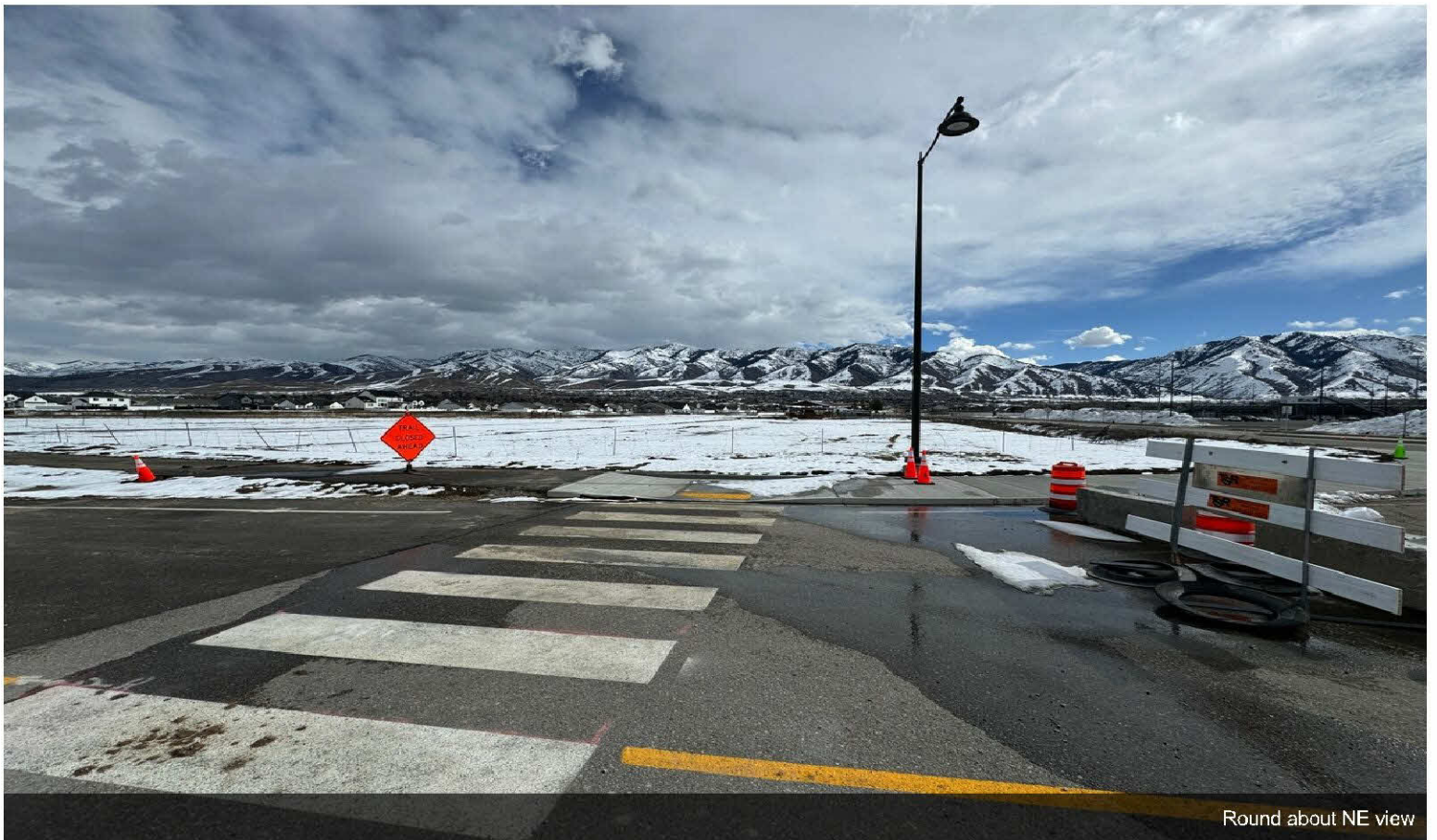


West view

Property Photos



Eastern view



Round about NE view