

EST. **TD** 1978
THOMAS DUKE
COMMERCIAL REAL ESTATE

209 E. LIBERTY

Milford, MI 48381



FOR SALE

248.476.3700

EXCLUSIVELY LISTED BY:

MARK SCHAFFER

Vice President

mschafer@thomasduke.com

OFFERING SUMMARY: 209 E. Liberty | Milford, MI 48381

**PROPERTY OVERVIEW**

Charming office building located in the heart of downtown Milford — a walkable, small-town commercial district with strong curb appeal and excellent visibility. This well-maintained single-tenant property combines historic character with modern systems, making it ideal for a professional office,

OFFERING SUMMARY

Sale Price:	\$300,000.00
Building Size:	2,430 SF
Price / SF:	\$123.46
Year Built:	1949
Zoning:	O-1

PROPERTY HIGHLIGHTS

- Downtown Milford location.
- Great Visibility.
- Office zoning allows for various office uses.
- Residential apartment upstairs.
- Garage with access to Union Street.

BUILDING/PROPERTY INFORMATION: 209 E. Liberty | Milford, MI 48381

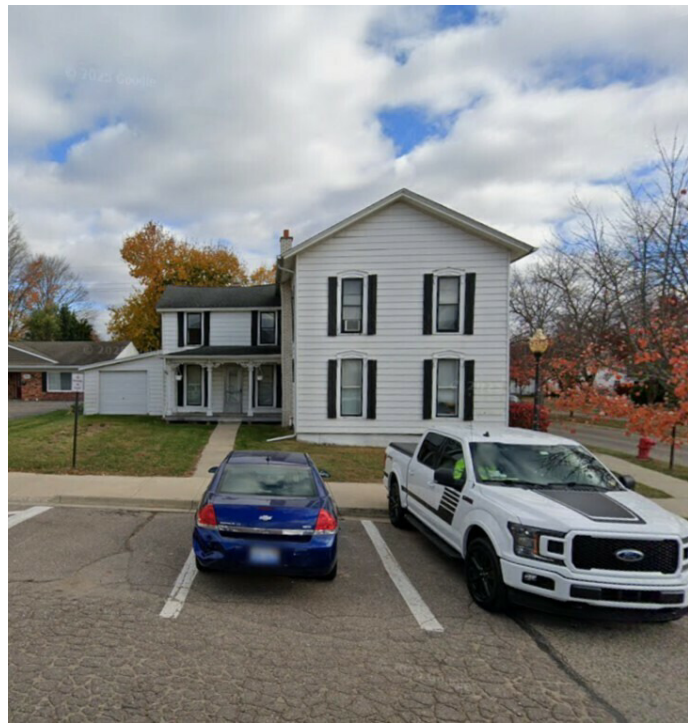
BUILDING INFORMATION		PROPERTY INFORMATION	
SALE PRICE:	\$300,000.00	Property Type:	Office Building
Price/SF:	\$123.46	Taxes:	2025 Village - \$1,437.77 2025 Summer - \$5,763.90 2024 Winter - \$1,654.21
Building Size:	2,430 SF	Zoning	O-1
Year Built:	1949	Traffic Count:	Liberty St = 1306 Main St = 10,898
Number of Floors:	2	Legal Description:	T2N, R7E, SEC 10 & 11 PHELPS' ADD. LOT 1 BLK 6
Utilities:	Municipal Water & Sanitary Sewer	APN:	16-11-152-006
Parking Spaces:	7 spaces		

LOCATION INFORMATION

Located on the northeast corner of Union Street and Liberty Street, just east of Main Street in Downtown Milford.



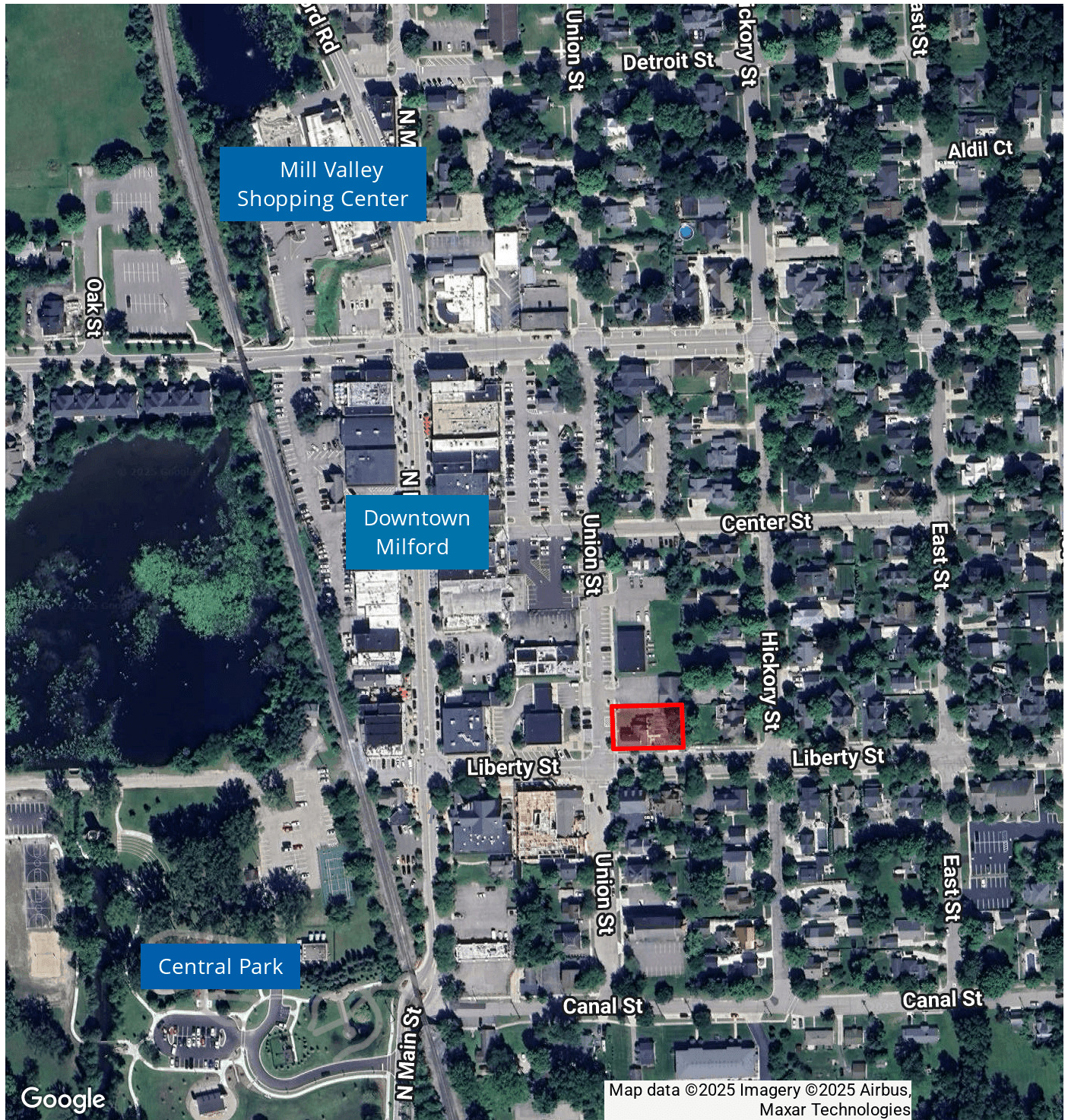
ADDITIONAL PHOTOS: 209 E. Liberty | Milford, MI 48381



AERIAL MAP: 209 E. Liberty | Milford, MI 48381

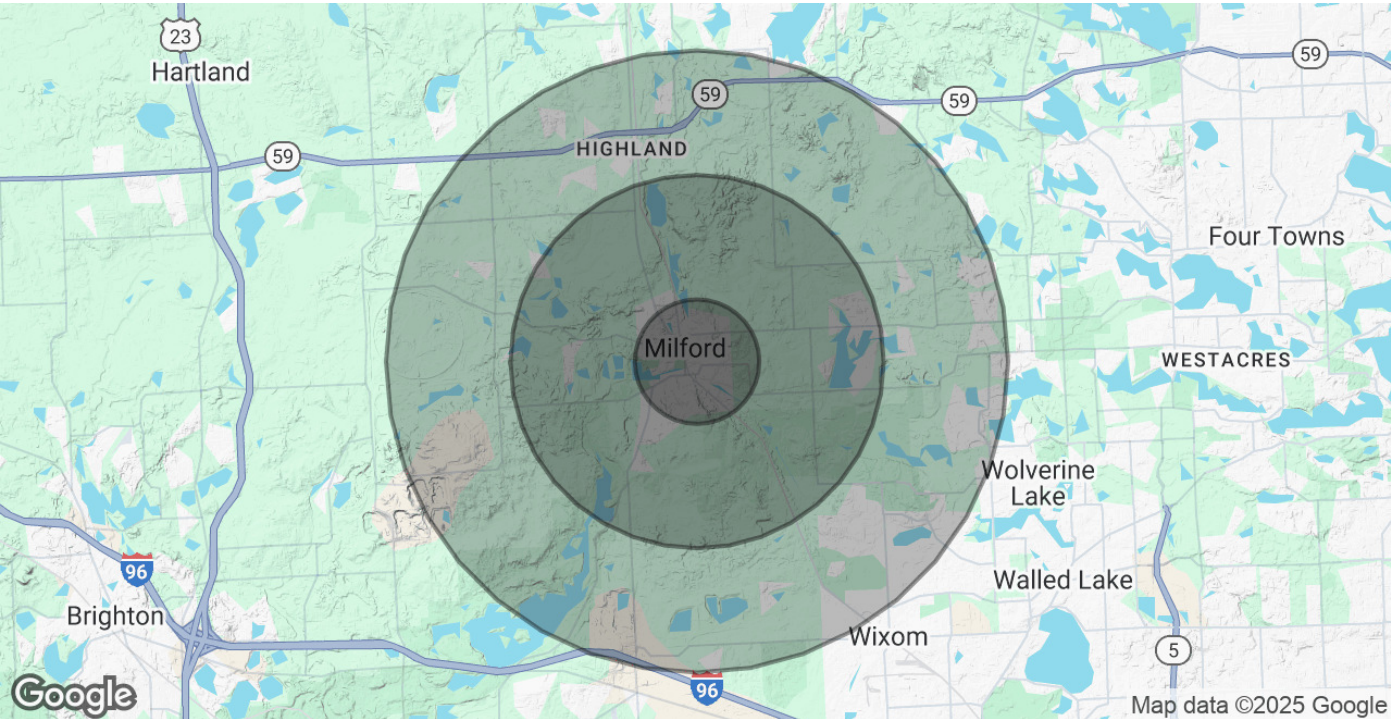


RETAILER MAP: 209 E. Liberty | Milford, MI 48381



DEMOGRAPHICS MAP & REPORT:

209 E. Liberty | Milford, MI 48381



POPULATION	1 MILE	3 MILES	5 MILES
Total Population	6,567	16,621	48,590
Average Age	45	45	43
Average Age (Male)	43	43	42
Average Age (Female)	47	46	43
HOUSEHOLDS & INCOME	1 MILE	3 MILES	5 MILES
Total Households	2,868	6,616	18,341
# of Persons per HH	2.3	2.5	2.6
Average HH Income	\$140,098	\$159,336	\$153,081
Average House Value	\$418,638	\$487,583	\$431,154
Demographics data derived from AlphaMap			