

MARYLAND HEIGHTS

SPECIALTY AUTO RELATED BUILDING FOR SALE – WESTPORT

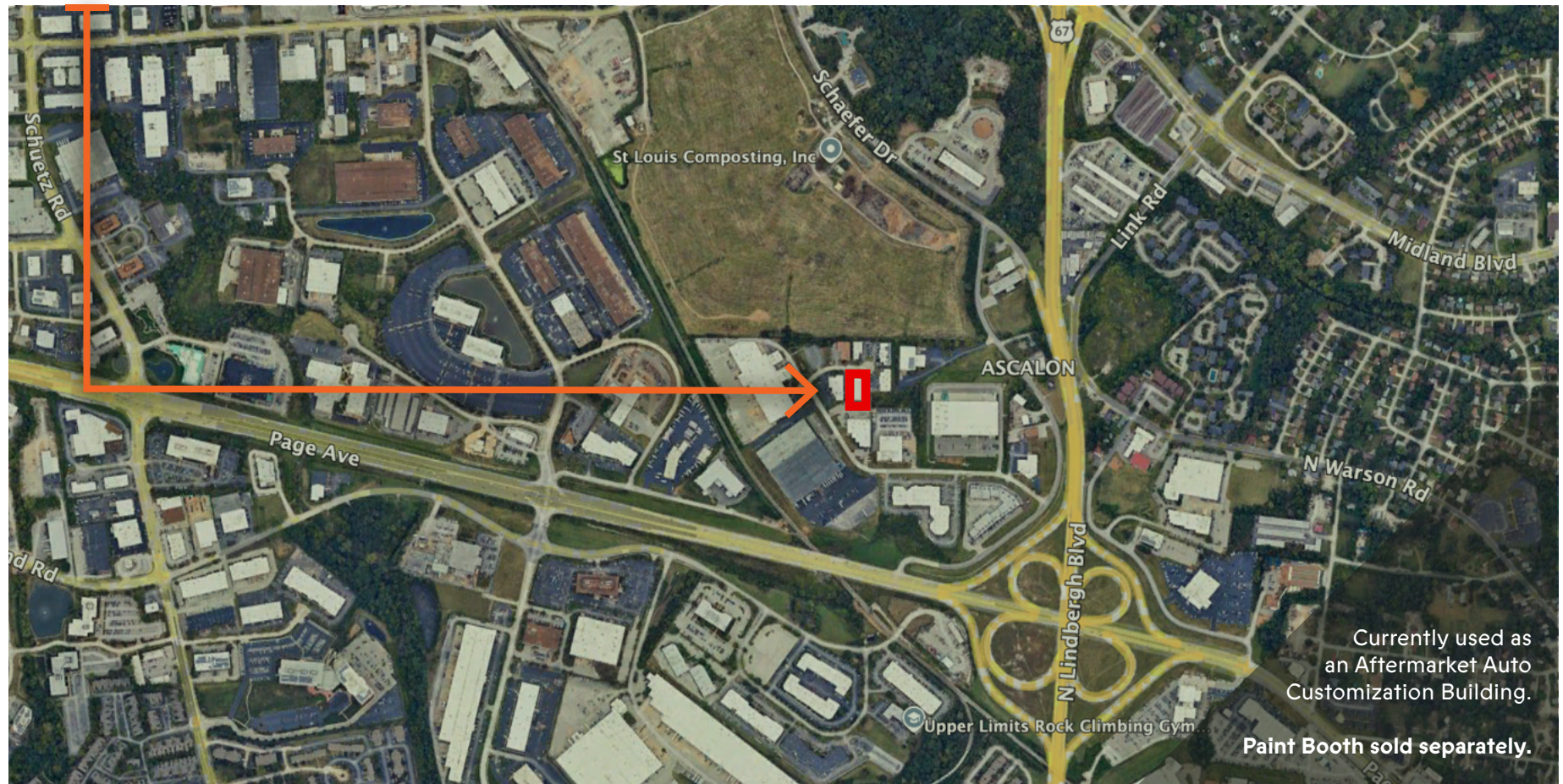
12 Millpark Court,
Maryland Heights, MO



LOCATION

PLEASE NOTE:

Building is currently occupied, please do not disturb tenants.



PROPERTY DETAILS

- > 8,820 SF
- > Approximately 20% Office (Equipped with Shower)
- > Two (2) Oversized Drive-In Doors
- > 14' Ceilings
- > \$1,100,000 (\$125 psf)
- > OPEX - \$2.44



KMACRE.COM

FOR FURTHER INFORMATION, CONTACT

KEVIN P. MCLAUGHLIN, SIOR

KEVIN@KMACRE.COM

314.603.1983