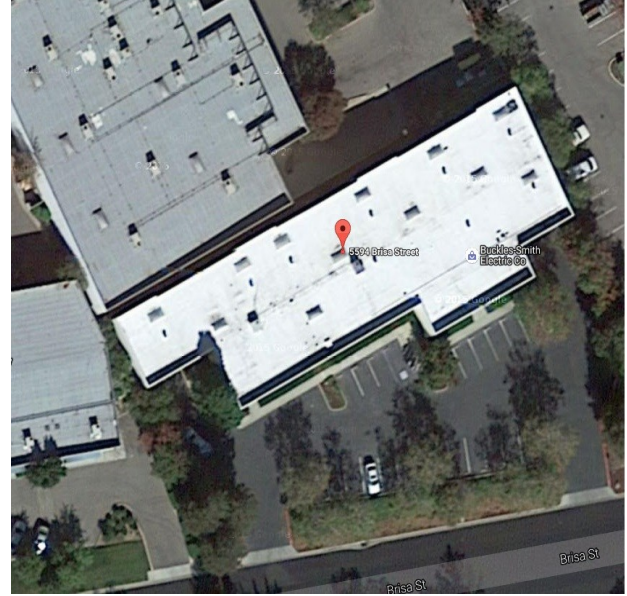


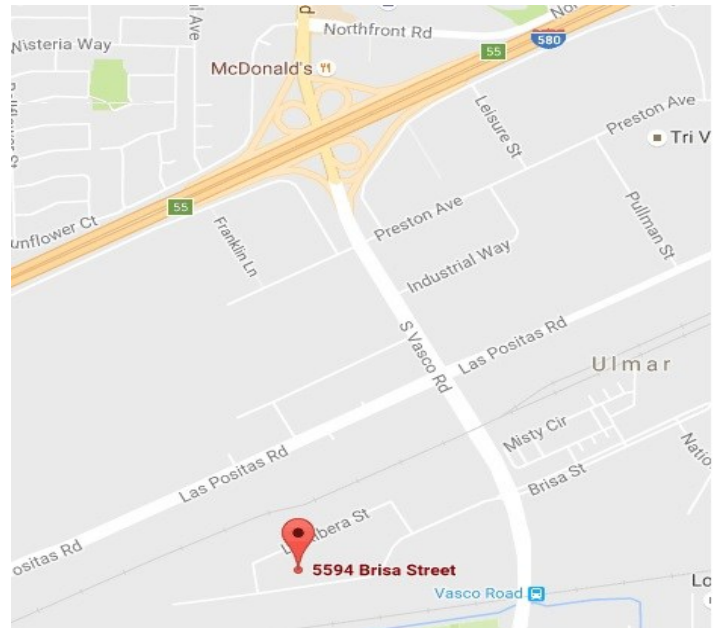
LIGHT INDUSTRIAL FOR LEASE

**5594 Brisa St., Suite "A"
Livermore, California**



Property Information:

- \$1.35 /SF NNN (NNN is approx. \$.25)
- Approx. 11,800 SF Rentable
- Space has Extensive Office Buildout
- 6 Privates Offices and 2 Restrooms
- Large Conference/Training Room
- 16' Clear Height, Fire Sprinklers
- One 12' x 14' Grade Level Door
- Ample Available on Site Parking
- Attractive, Well Maintained Building
- Great Location Near Interstate 580



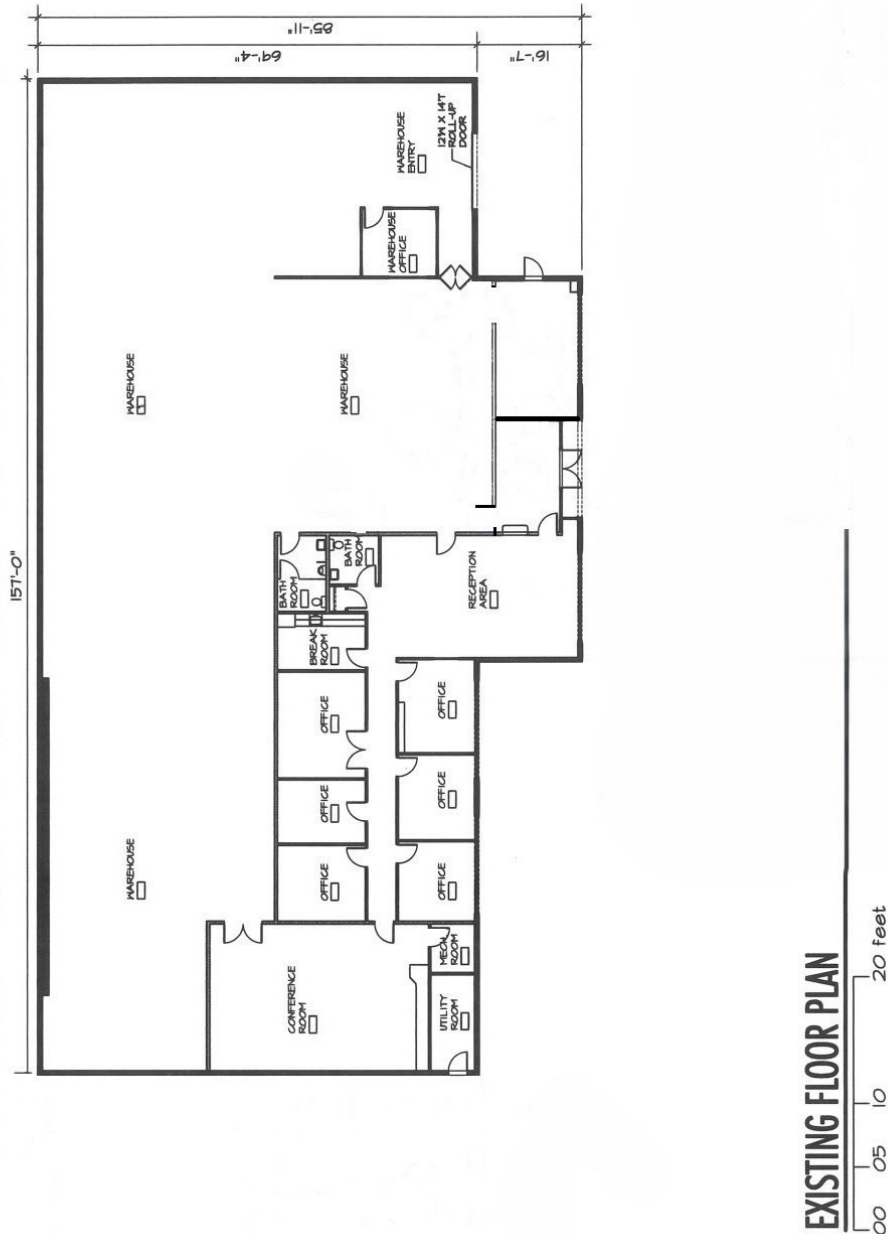
Contact Exclusive Listing Agents:

Thomas Caple
CA BRE# 01089011
(510) 908-0505
tom@dpccommercial.com

Graham Deutscher
CA BRE# 01854629
(925) 768-1389
graham@dpccommercial.com

Deutscher Properties
370 Civic Drive
Pleasant Hill, CA
Office (925) 676-6166
Fax (925) 676-6177
www.dpccommercial.com

5594 Brisa Street, Suite "A" Livermore, California



Thomas Caple
Director
CA BRE# 01089011
(510) 908-0505
tom@dpccommercial.com

Graham Deutscher
President
CA BRE# 01854629
(925) 768-1389
graham@dpccommercial.com

Deutscher Properties Corp
370 Civic Drive
Pleasant Hill, CA
Office (925) 676-6166
Fax (925) 676-6177
www.dpccommercial.com