



ATLANTA COMMERCIAL  
REAL ESTATE BROKERS

# ACWORTH LIGHT INDUSTRIAL - FOR LEASE

5,350 SF Flex Space Available  
Convenient to I-75, US-41 & Downtown

DRIVE INS + COMMON DOCK HIGH  
3701 NEW MCEVER RD. NW  
ACWORTH, GA 30101

---

**DONALD B. EDWARDS, JR.**  
Associate Broker/Commercial Director  
(770) 324-3457  
don@dbeproperties.com  
119563, GA  
Office- (770) 240-2004





12' Drive In Doors



Common Area Dock High

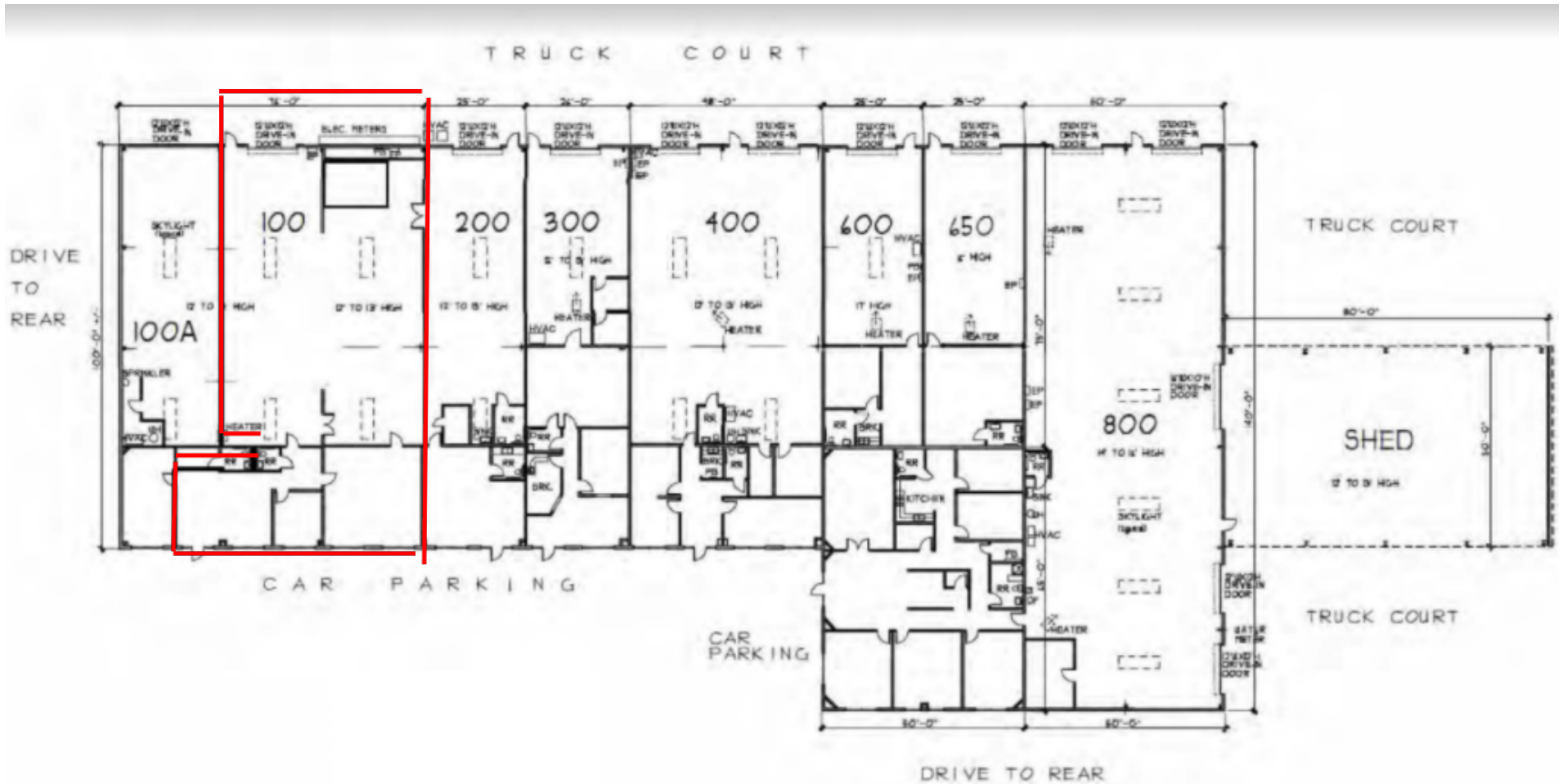


Address: 3701 New McEver Road NW  
City, State: Acworth, GA 30101  
County: Cobb  
Lease Rate: \$13.00  
NNN: Yes + \$3.25 CAM  
Market: NW Atlanta  
Sub-market: Acworth  
Year Built: 2001  
Zoning: LI

## Property Overview

3701 New McEver Rd NW is a 34,500 sq ft brick front light industrial building conveniently located near I-75, US-41 and downtown Acworth. This multi-tenant flex office/warehouse building offers front entry and 12' drive-in doors to the rear of the units. There is also a common area dock high and approximately 70 parking spaces.

# AVAILABLE SUITES AND SITE PLAN



## AVAILABILITY

Suite	Size	Rate	CAM	Monthly Total	Type
Suite 100	5,350	\$13.00 /sf/yr	\$3.25 sf/yr	\$ 7,244.79	NNN Lease

We obtained the information above from sources we believe to be reliable. However, we have not verified its accuracy and make no guarantee, warranty or representation about it. It is submitted subject to the possibility of errors, omissions, change of price, rental or other conditions, prior sale, lease or financing, or withdrawal without notice. We include projections, opinions, assumptions or estimates for example only, and they may not represent current or future performance of the property. You and your tax and legal advisors should conduct your own investigation of the property and transaction.

Suite 100 - 5,350 SF  
\$13.00 psf/yr + \$3.25 CAM = \$7,244.79  
monthly  
Flex Office/Warehouse w/ 1 Drive In Door

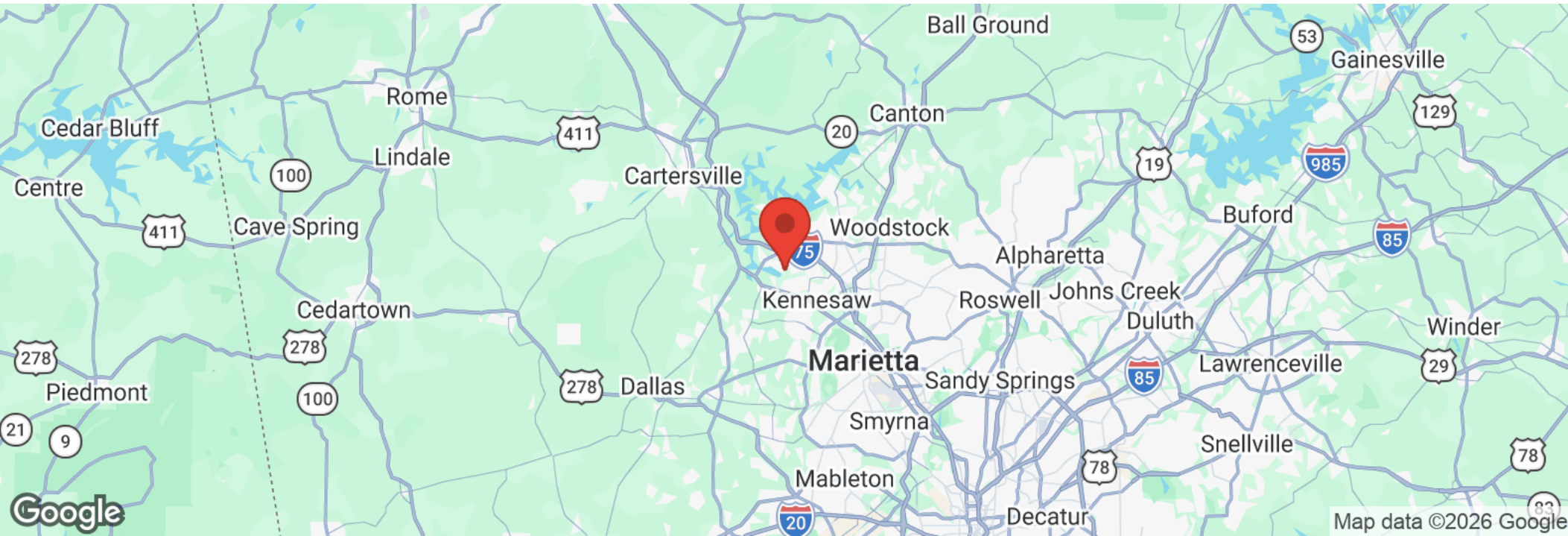


We obtained the information above from sources we believe to be reliable. However, we have not verified its accuracy and make no guarantee, warranty or representation about it. It is submitted subject to the possibility of errors, omissions, change of price, rental or other conditions, prior sale, lease or financing, or withdrawal without notice. We include projections, opinions, assumptions or estimates for example only, and they may not represent current or future performance of the property. You and your tax and legal advisors should conduct your own investigation of the property and transaction.



We obtained the information above from sources we believe to be reliable. However, we have not verified its accuracy and make no guarantee, warranty or representation about it. It is submitted subject to the possibility of errors, omissions, change of price, rental or other conditions, prior sale, lease or financing, or withdrawal without notice. We include projections, opinions, assumptions or estimates for example only, and they may not represent current or future performance of the property. You and your tax and legal advisors should conduct your own investigation of the property and transaction.

## AREA OVERVIEW

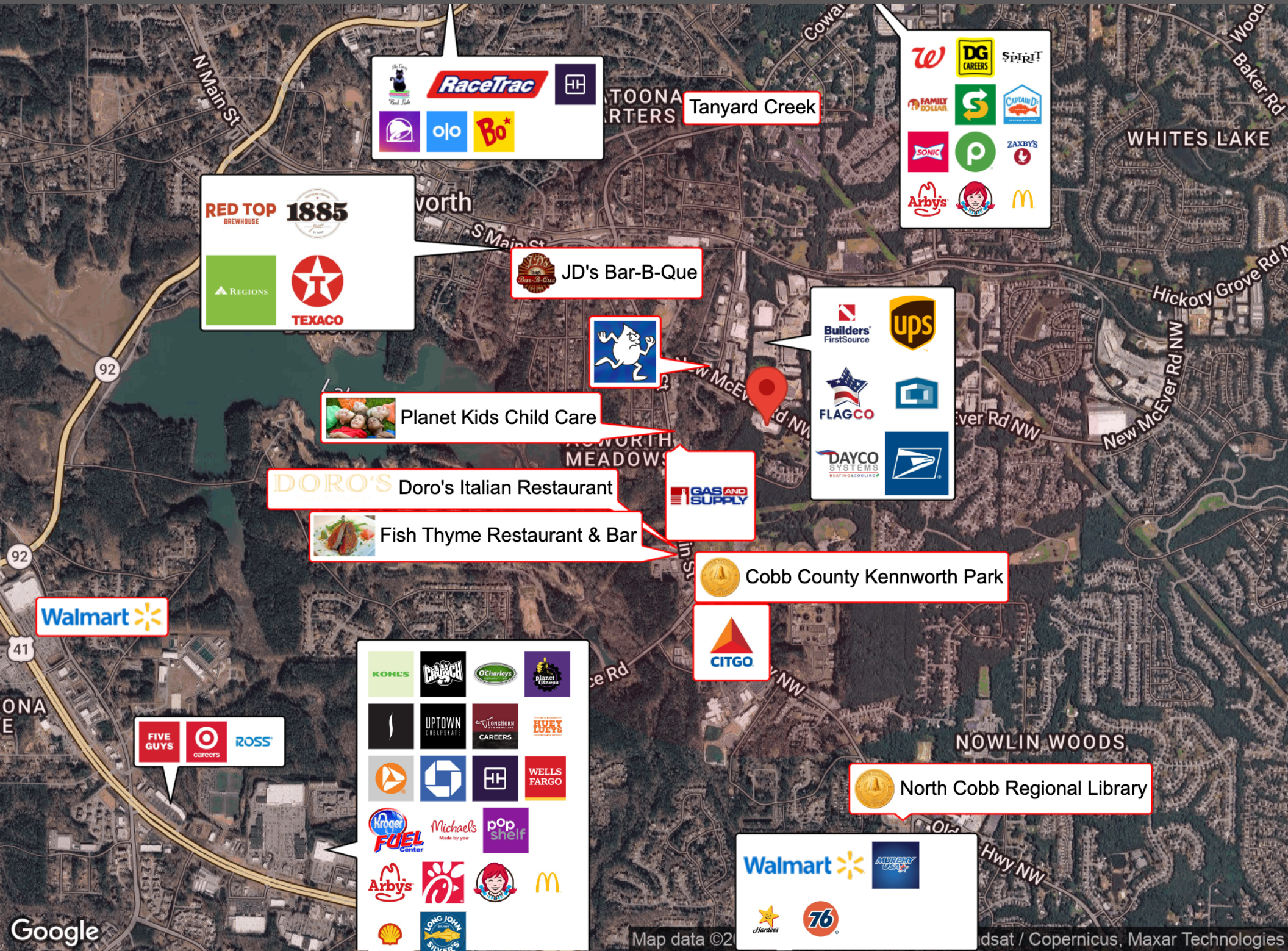


### Acworth, GA

As part of the NW Atlanta Metro area, Acworth is nicknamed The Lake City, thanks to the beautiful Lake Allatoona and Lake Acworth. The city is also known for its outdoor recreation with the Kennesaw Mountain National Battlefield Park and Red Top Mountain State Park both nearby. The city boasts a rich history, a charming downtown, abundant outdoor activities, a vibrant restaurant scene and an active festival and event calendar.



We obtained the information above from sources we believe to be reliable. However, we have not verified its accuracy and make no guarantee, warranty or representation about it. It is submitted subject to the possibility of errors, omissions, change of price, rental or other conditions, prior sale, lease or financing, or withdrawal without notice. We include projections, opinions, assumptions or estimates for example only, and they may not represent current or future performance of the property. You and your tax and legal advisors should conduct your own investigation of the property and transaction.



**RaceTrac**

ojo Bo\*

Tanyard Creek

w DG CAREERS SPIRIT

FAMILY DOLLAR S CAPTAIN D'S

SONIC p ZAXBY'S

Arby's McDonald's

RED TOP BREWHOUSE 1885

REGIONS TEXACO

**JD's Bar-B-Que**



**Planet Kids Child Care**

Builders FirstSource ups

FLAG CO

DAYCO SYSTEMS HEATING/COOLING

**DORO'S Doro's Italian Restaurant**

**GAS AND SUPPLY**

**Fish Thyme Restaurant & Bar**

**Cobb County Kennworth Park**

**Walmart**

**CITGO**

FIVE GUYS TARGET careers ROSS

KOHL'S CROUCH OCharleys Planet Fitness

UPTOWN CAREERS HUEY LUEYS

WELLS FARGO

**North Cobb Regional Library**

Kroger FUEL Center Michaels pop shelf

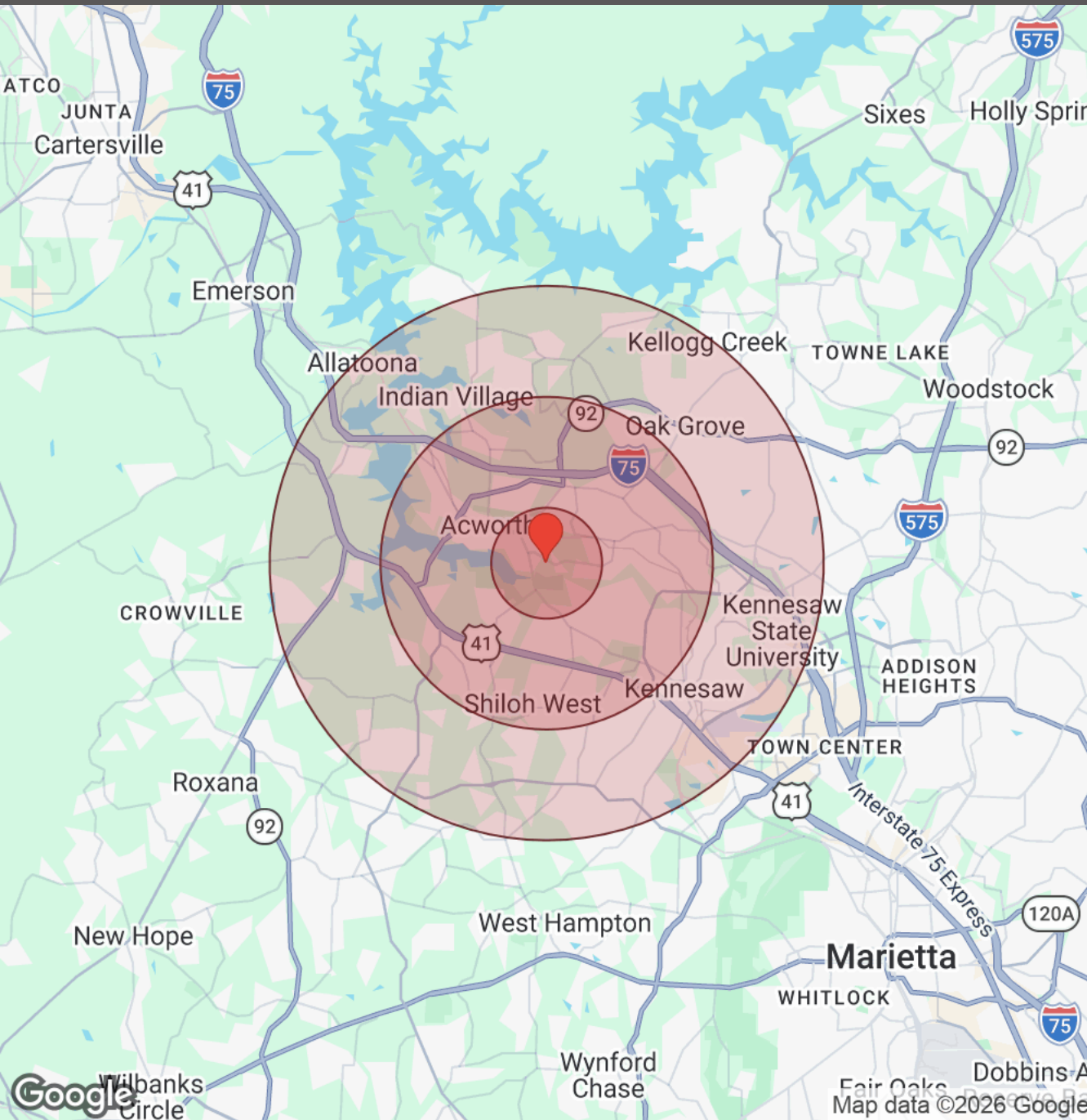
Arby's McDonald's

Shell LONG JOHN SILVER

Walmart MURPHY USA

Hardee's 76

# DEMOGRAPHICS



Distance: ● 1 Mile ● 3 Miles ● 5 Miles

Population	1 Mile	3 Miles	5 Miles
Male	2,908	29,504	70,426
Female	3,174	32,181	73,078
Total Population	6,082	61,685	143,504

Race / Ethnicity	1 Mile	3 Miles	5 Miles
White	3,225	32,995	83,720
Black	1,563	15,187	30,121
Am In/AK Nat	8	49	129
Hawaiian	1	12	43
Hispanic	803	8,432	18,584
Asian	322	3,306	7,118
Multiracial	141	1,517	3,387
Other	18	185	387

Housing	1 Mile	3 Miles	5 Miles
Total Units	2,470	24,094	55,655
Occupied	2,367	22,945	53,117
Owner Occupied	1,576	16,425	36,879
Renter Occupied	791	6,520	16,238
Vacant	103	1,148	2,538

Age	1 Mile	3 Miles	5 Miles
Ages 0 - 14	1,003	11,177	24,973
Ages 15 - 24	834	8,642	21,999
Ages 25 - 54	2,414	25,459	57,619
Ages 55 - 64	807	7,657	18,568
Ages 65+	1,023	8,752	20,347

Income	1 Mile	3 Miles	5 Miles
Median	\$89,512	\$98,901	\$101,715
Under \$15k	87	1,155	3,458
\$15k - \$25k	139	1,002	1,887
\$25k - \$35k	101	1,137	2,412
\$35k - \$50k	292	2,001	4,069
\$50k - \$75k	358	3,289	7,426
\$75k - \$100k	357	3,022	6,817
\$100k - \$150k	508	5,117	11,911
\$150k - \$200k	232	2,929	6,653
Over \$200k	294	3,294	8,484

We obtained the information above from sources we believe to be reliable. However, we have not verified its accuracy and make no guarantee, warranty or representation about it. It is submitted subject to the possibility of errors, omissions, change of price, rental or other conditions, prior sale, lease or financing, or withdrawal without notice. We include projections, opinions, assumptions or estimates for example only, and they may not represent current or future performance of the property. You and your tax and legal advisors should conduct your own investigation of the property and transaction.



## DONALD B EDWARDS JR

### Commercial Director and Associate Broker

Licensed in 1984, Don has completed hundreds of commercial real estate transactions across the USA including industrial, retail, office, medical, multifamily, land, timber, mining and multi family residential, as well as, landlord and tenant representation, property management and site selection for national franchises. As the head of the trust real estate department for all the South Trust Banks, he was responsible for a full staff and a \$750M portfolio of diverse assets including retail, office, medical, industrial, land, mining, timber, farms, leases, mortgages, property inspections and asset management from coast to coast. In addition, he has over 18 years of commercial and residential construction experience. His land deals have included assemblages, out parcels, and development sites for all asset classes. Don is a past president of the Association of Georgia Real Estate Exchangors, and has executed numerous 1031 exchanges. In addition, he has passed all of the CCIM course work.



ATLANTA COMMERCIAL  
REAL ESTATE BROKERS

Cell: 770.324.3457  
Office: 770-240-2004  
don@dbeproperties.com

Administrative Contact  
admin@dbeproperties.com

Showing Contacts:  
Christin Henson 678-699-6188  
christintherealtor@gmail.com  
Markie Clary 239-529-8774  
markie@atlmetrocre.com

## DISCLAIMER

All materials and information received or derived from DBE Properties, its directors, officers, agents, advisors, affiliates and/or any third party sources are provided without representation or warranty as to completeness, veracity, or accuracy, condition of the property, compliance or lack of compliance with applicable governmental requirements, developability or suitability, financial performance of the property, projected financial performance of the property for any party's intended use or any and all other matters.

Neither DBE Properties, its directors, officers, agents, advisors, or affiliates makes any representation or warranty, express or implied, as to accuracy or completeness of the any materials or information provided, derived, or received. Materials and information from any source, whether written or verbal, that may be furnished for review are not a substitute for a party's active conduct of its own due diligence to determine these and other matters of significance to such party. DBE Properties will not investigate or verify any such matters or conduct due diligence for a party unless otherwise agreed in writing.

EACH PARTY SHALL CONDUCT ITS OWN INDEPENDENT INVESTIGATION AND DUE DILIGENCE.

Any party contemplating or under contract or in escrow for a transaction is urged to verify all information and to conduct their own inspections and investigations including through appropriate third-party independent professionals selected by such party. All financial data should be verified by the party including by obtaining and reading applicable documents and reports and consulting appropriate independent professionals. DBE Properties makes no warranties and/or representations regarding the veracity, completeness, or relevance of any financial data or assumptions. DBE Properties does not serve as a financial advisor to any party regarding any proposed transaction.

All data and assumptions regarding financial performance, including that used for financial modeling purposes, may differ from actual data or performance. Any estimates of market rents and/or projected rents that may be provided to a party do not necessarily mean that rents can be established at or increased to that level. Parties must evaluate any applicable contractual and governmental limitations as well as market conditions, vacancy factors and other issues in order to determine rents from or for the property. Legal questions should be discussed by the party with an attorney. Tax questions should be discussed by the party with a certified public accountant or tax attorney. Title questions should be discussed by the party with a title officer or attorney. Questions regarding the condition of the property and whether the property complies with applicable governmental requirements should be discussed by the party with appropriate engineers, architects, contractors, other consultants, and governmental agencies. All properties and services are marketed by DBE Properties in compliance with all applicable fair housing and equal opportunity laws.