



Opportunities at Broadway Mixed Use

3417 – 3431 Broadway Ave, Everett, WA 98201

Note, opportunity exists to combine or demise spaces to accommodate needs. Note: Ample Onsite Parking

1. Retail/Office

3417 Broadway Ave, Suite D

700 Sf Open Retail or Office

3417 Broadway, Suite B100 & B103 (parking lot level)

2,010 sf Office

2. Turn Key Office

3425 Broadway (Previously Leavitt Insurance Group)

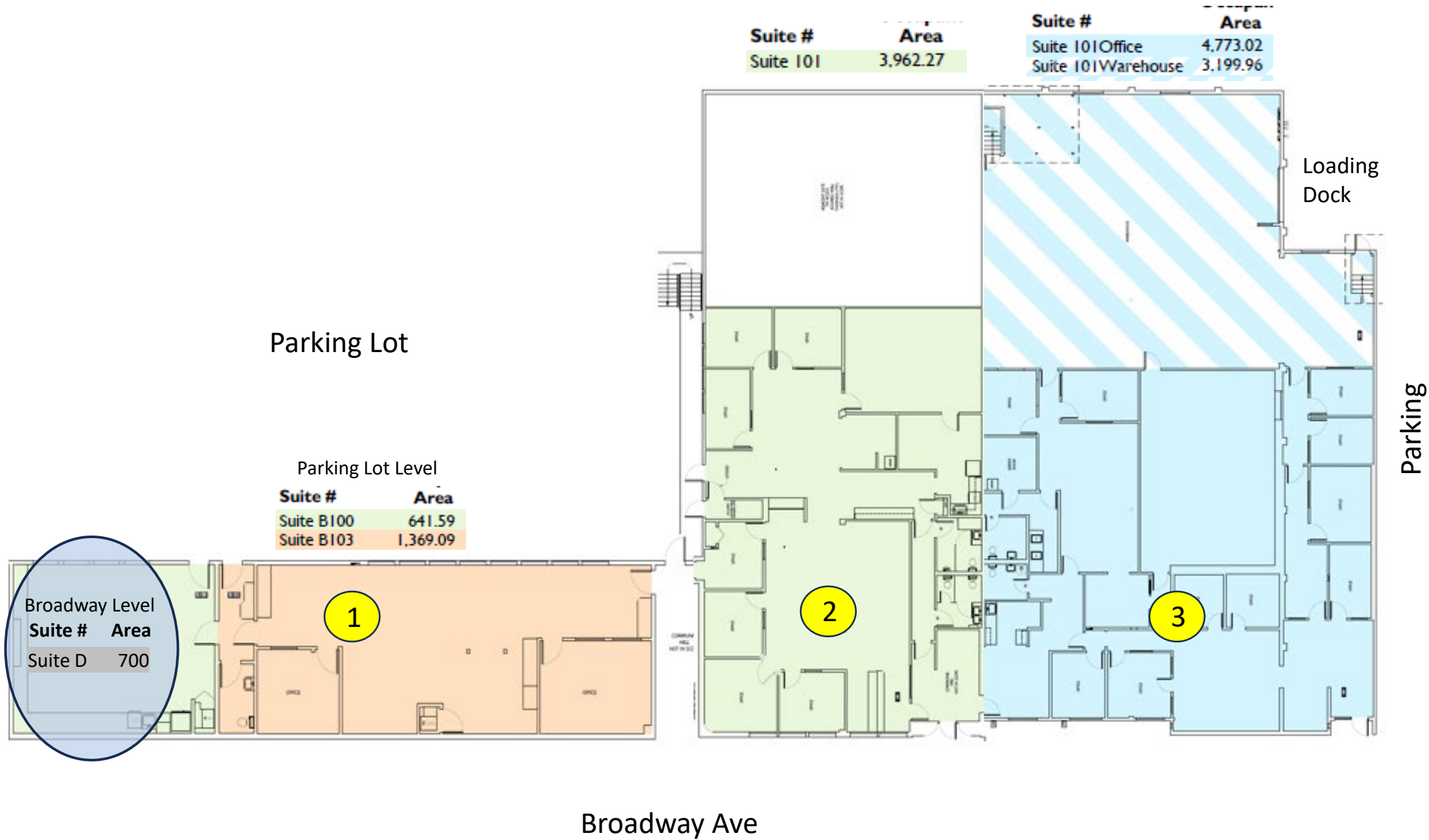
3,962 sf Turn-Key Office

3. Office & Warehouse

3431 Broadway (Previously Seatown Electric)

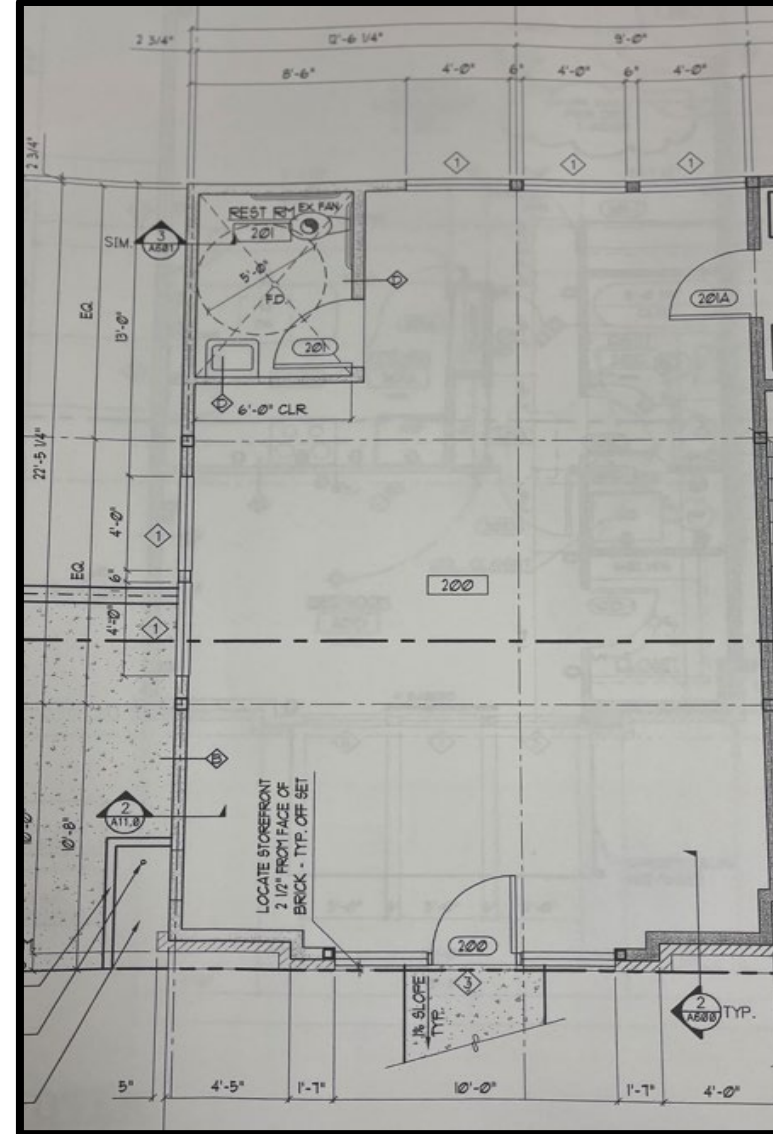
4,773 sf of front office or retail space (or more warehouse)

3,199 sf of warehouse with loading dock



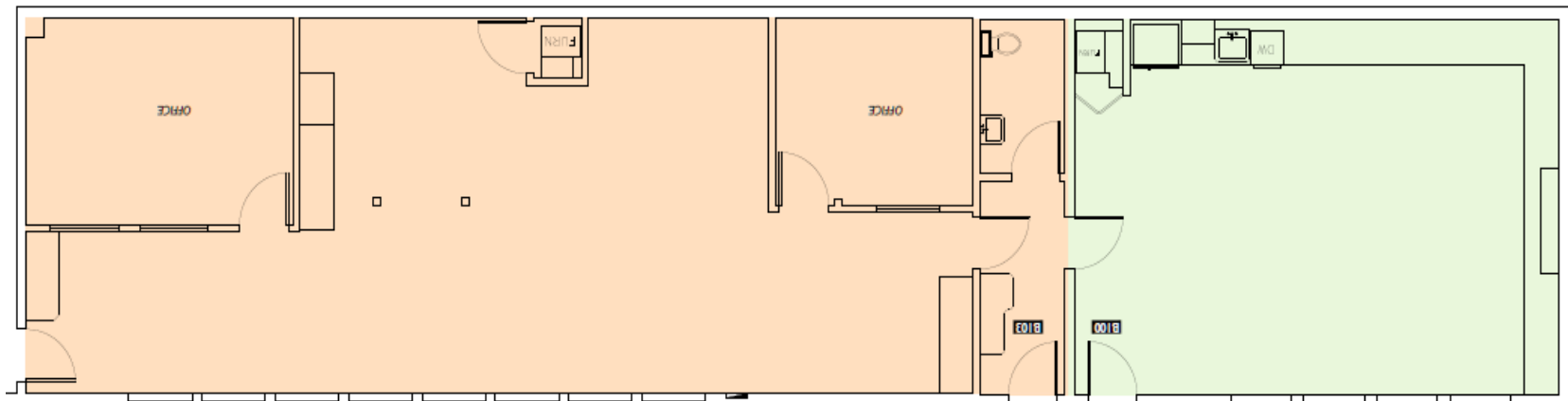
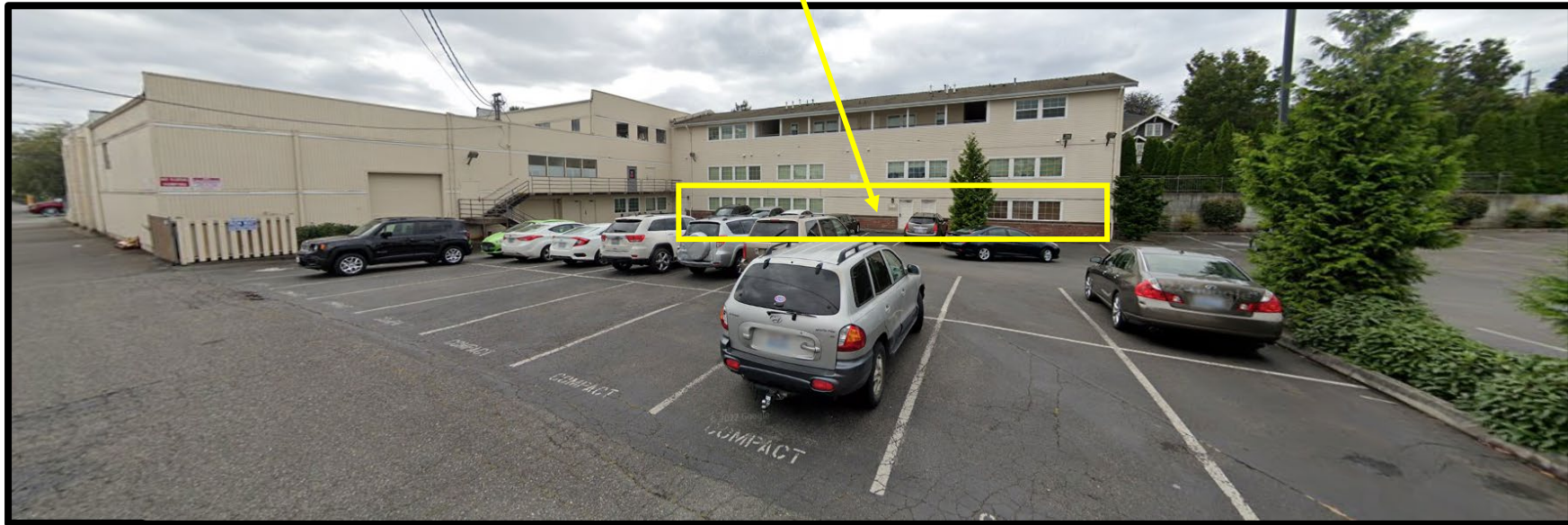
1

3417 Broadway Ave - Retail/Office
700 sf of open retail / office on Broadway



1

2,010 sf of office/conference space with 1 bathroom.



Suite #	Area
Suite B100	641.59
Suite B103	1,369.09

3425 Broadway Ave, Everett WA 98201

2

Previous Leavitt Insurance

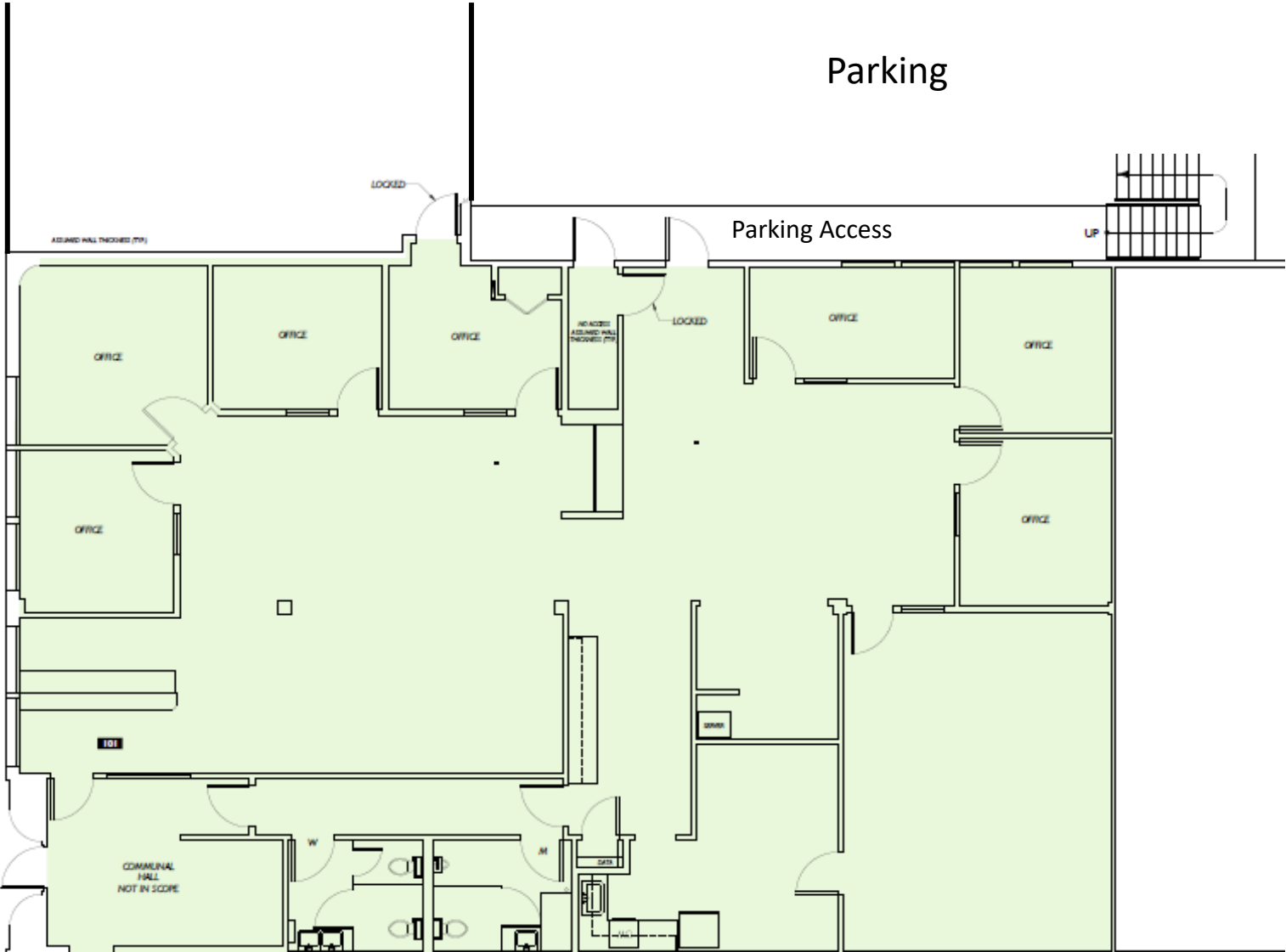
3,962 sf Turn Key Office Suite on Broadway.

- 7 Private Offices & Conference Room
- Open Areas, and Work Rooms
- 2 Bathrooms and Full Kitchen



2

Broadway Ave



Suite #	Area
Suite 101	3,962.27

3431 Broadway Ave, Everett, WA 98201

3

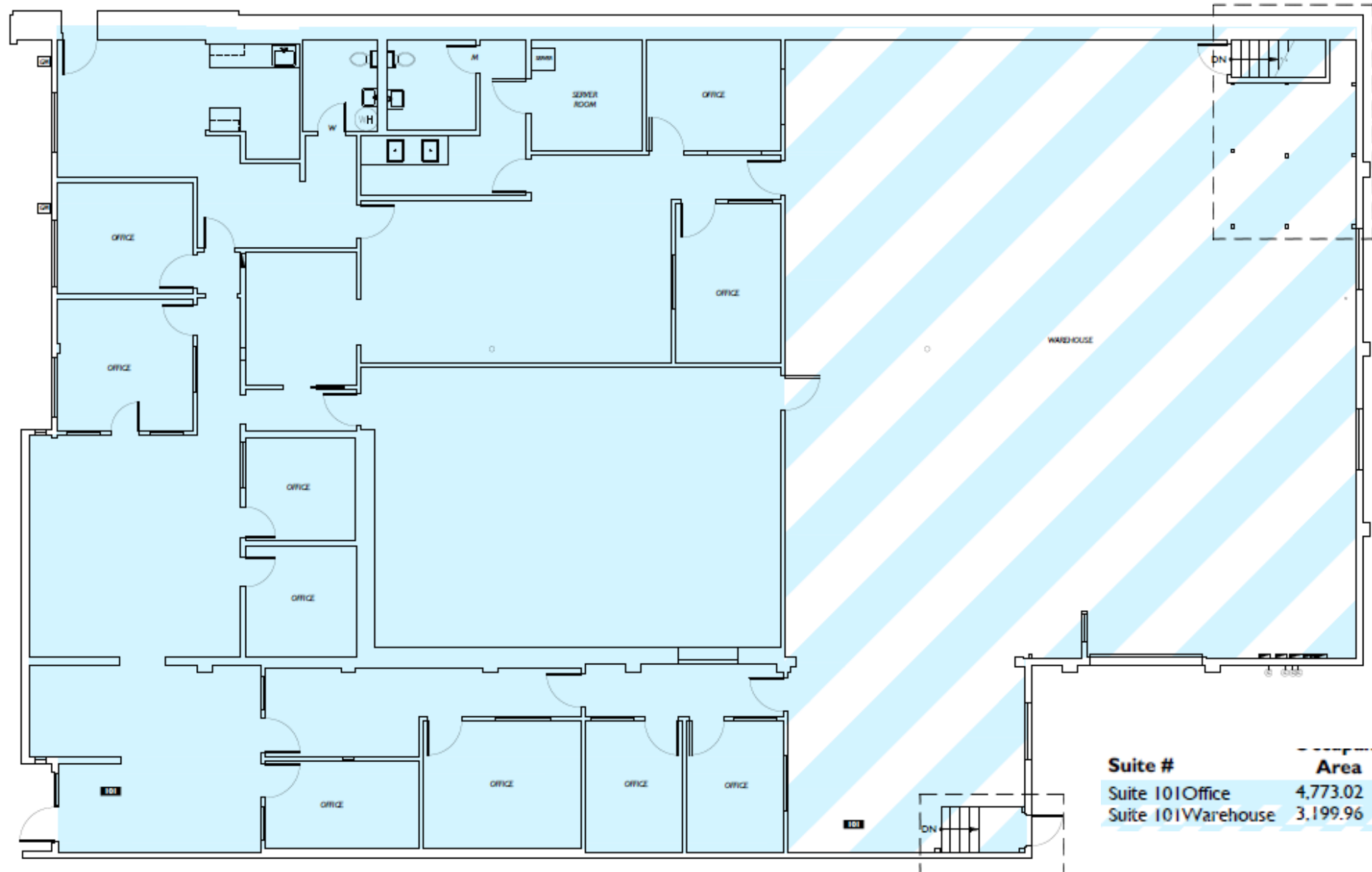
Previously Seatown Electric Headquarters

- 4,773 sf of front office or retail space
 - 2 Restrooms and Breakroom
- 3,199 sf of warehouse with loading dock
- 950 sf of warehouse on alley level



Broadway Ave

3



Additional Parking:

- 9 Customer parking spaces on 35th St
- Plus uncrowded street parking on Broadway

