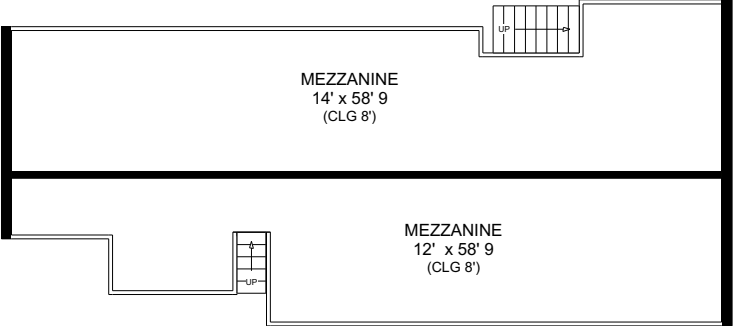
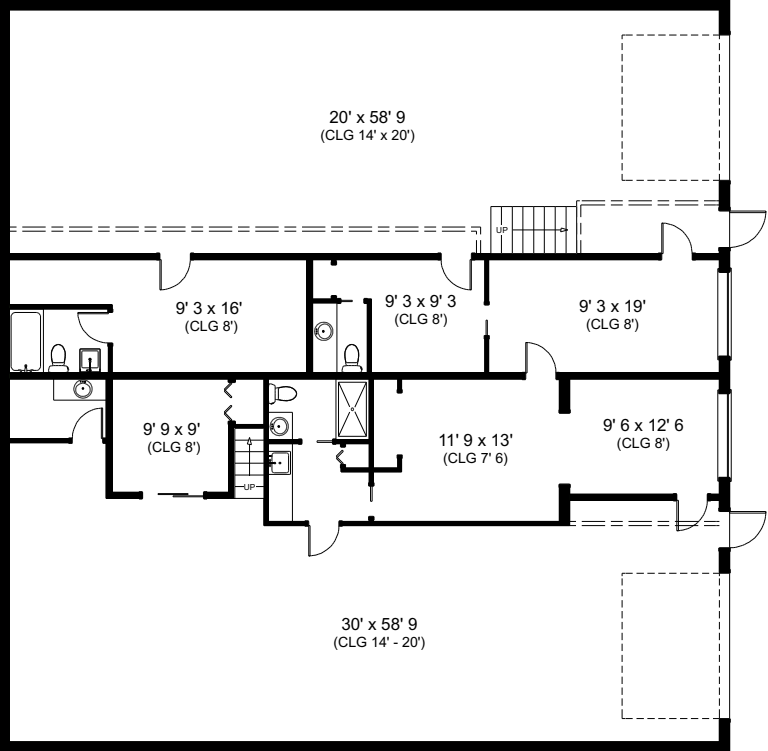


5701 HOUCHIN STREET  
 SUITES 7 & 8  
 NAPLES, FL



Suite 7	3705 sq. ft.
Mezzanine	1386 sq. ft.
<b>TOTAL USABLE AREA</b>	<b>5091 sq. ft</b>

This floor plan is created from field measurements. The usable area calculations are based upon measurements from outside exterior walls to center of demising walls and to inside common area walls

Prepared exclusively for Christopher Shucart  
 ©2022 Precision Floorplans, Inc. This document is the copyright property of Precision Floorplans, Inc.

Any other user may not copy, modify, reproduce, republish, distribute, display, or transmit for commercial, nonprofit or public purposes all or any portion of this document except to the extent authorized by Precision Floorplans, Inc. (239) 598-9411/precisionfloorplans@earthlink.net  
 Copyright infringement (Title 17 Chapter 5 Section 501) in the U.S. Federal Court.

ALL INFORMATION IS DEEMED RELIABLE NOT GUARANTEED