

DEVELOPED PARCEL FOR SALE Santa Rosa

# Harvest Business Center



2.58 ACRE PARCEL

AIRPORT BLVD.

BRICKWAY BLVD.

EXCLUSIVELY MARKETED BY:

**Shawn Johnson**  
707.528.1400 ext. 238

**Brian Keegan**  
707.528.1400 ext. 249

**James Nobles**  
707.528.1400 ext. 247

**50 BASIN STREET**  
PROPERTIES EST. 1974



# DEVELOPED PARCEL FOR SALE **Santa Rosa**

## Harvest Business Park



3839 Brickway Boulevard  
Santa Rosa, CA 95403  
APN# 059-271-009

Type:  
**Office/Medical**

Address:  
**3839 Brickway Boulevard  
Santa Rosa, CA**

Parcel  
**2.58 Acres**

Zoning  
**MP Industrial Park**

### DESCRIPTION

2.58 Acre parcel including approximately 1.15 acres of improved and completed driveway/parking and landscaping. The building pad was designed to accommodate a two story office building approximately 44,800 SF, however a reduced building design could accommodate a medical use requiring a higher parking ration. The parcel is within the Harvest Business Center a fully developed business park consisting of 2 existing buildings approximately 84,611 SF.

### LOCATION

Harvest Business Center is located on Brickway Boulevard adjacent to the Santa Rosa Airport and just five miles to downtown Santa Rosa. It offers close proximity to the Airport Health Club, Airport Cinemas movie theaters, the Windsor Golf and Country Club services, a variety of restaurants and other services. Just a few blocks to the Sonoma County Airport with air service provided by Alaska Airlines, United, American Airlines, and Avelo Airlines.

The park has commanding views of surrounding hills and Mount St. Helena. Large redwoods and mature oak trees are nestled throughout the park. Over 50 acres of vineyards, dedicated as scenic easements, front along U.S. Highway 101.

### AMENITIES

#### RECREATION

Airport Health Club, Windsor Golf

#### FOOD SERVICES

Starbucks, Kaffe Mocha, Carl's Jr.,  
Masala Express, Mi Tierra, Subway etc.

#### ENTERTAINMENT

Airport Stadium Cinema, 50+ SoCo  
Regional Parks

### TRANSPORTATION ACCESS

#### SONOMA COUNTY AIRPORT

Direct Flights to 13 Cities

#### SMART TRAIN

Regional Commuter Rail Line

#### HIGHWAY 101

Direct Access via Airport Blvd. and Skylane Blvd.  
to Shiloh Road



EXCLUSIVELY MARKETED BY:

**Shawn Johnson**  
DRE#: 00835502

**Brian Keegan**  
DRE#: 01809537

**James Nobles**  
DRE#: 01988349

# DEVELOPED PARCEL FOR SALE Santa Rosa Harvest Business Park





EXCLUSIVELY MARKETING BY:  
**Shawn Johnson**  
707.528.1400 ext. 238

**Brian Keegan**  
707.528.1400 ext. 249

**James Nobles**  
707.528.1400 ext. 247

# DEVELOPED PARCEL FOR SALE Santa Rosa Harvest Business Park

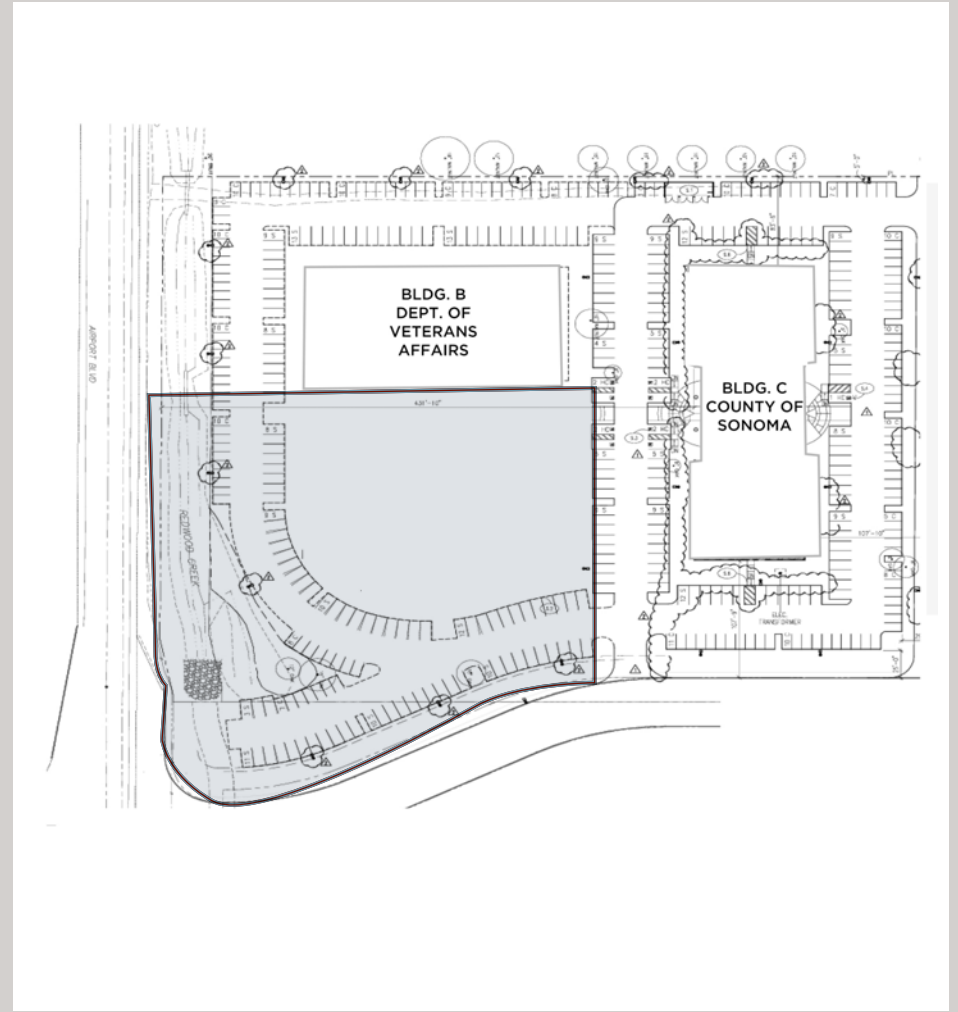
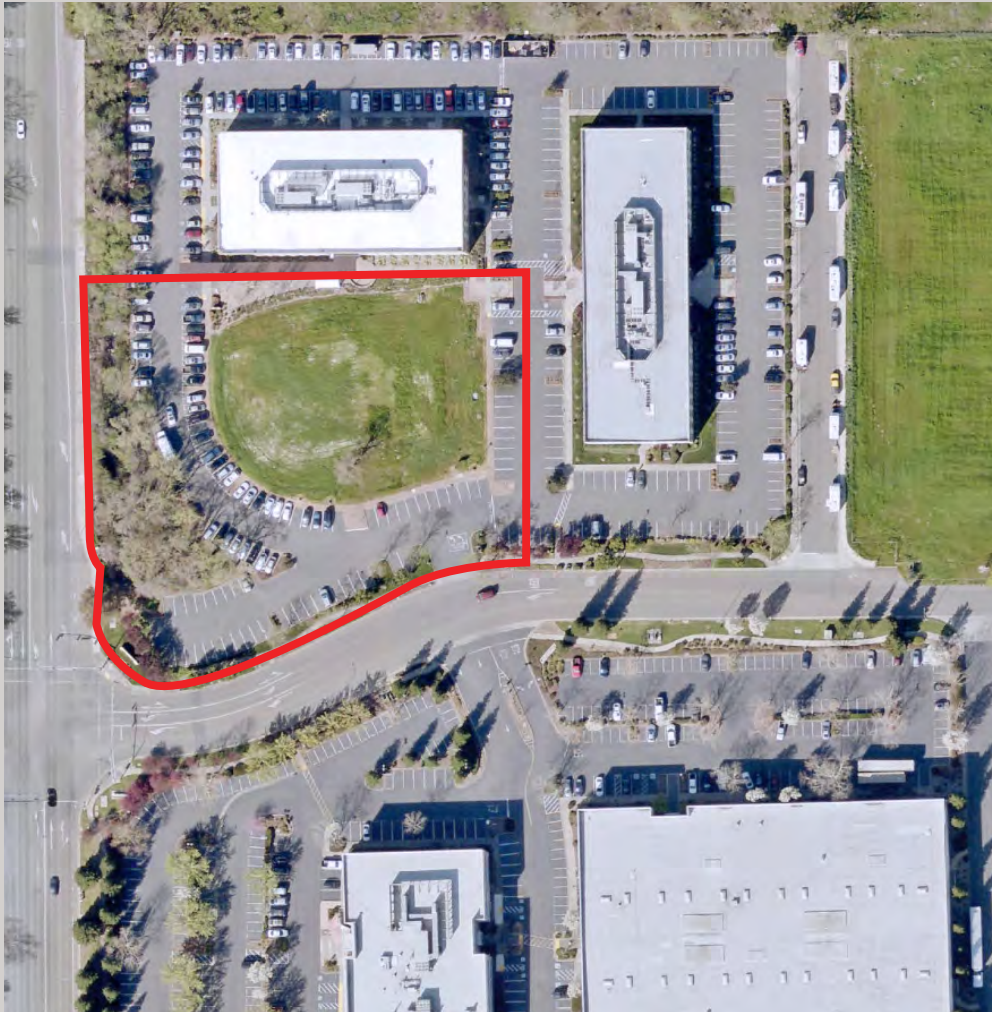


DRIVING DISTANCE 	
AIRPORT	4 MINS
DOWNTOWN SANTA ROSA	12 MINS
PETALUMA	30 MINS
NAPA	1 HR
SAN FRANCISCO	1 1/2 HRS
BY AIR 	
LOS ANGELES	1 1/2 HRS
BURBANK	1 1/2 HRS
ORANGE COUNTY	1 1/2 HRS
SAN DIEGO	1 1/2 HRS
PALM SPRINGS	1 1/2 HRS
LAS VEGAS	1 1/2 HRS
PHOENIX	2 HRS
DALLAS	3 1/2 HRS
PORTLAND	2 HRS
SAN DIEGO	1 3/4 HRS
SEATTLE	2 HRS
BEND	1 1/2 HRS
DENVER	2 HRS

# DEVELOPED PARCEL FOR SALE **Santa Rosa** **Harvest Business Park**

3839 Brickway Boulevard

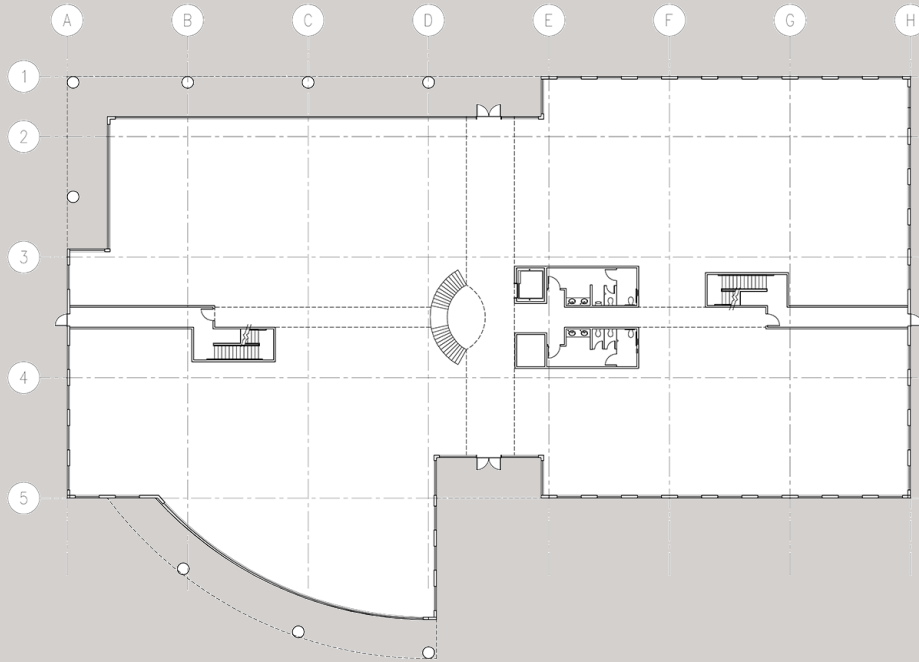
2.58 Acre Parcel - Includes +/-1.15 acres of improved parking, circulation, and landscaping



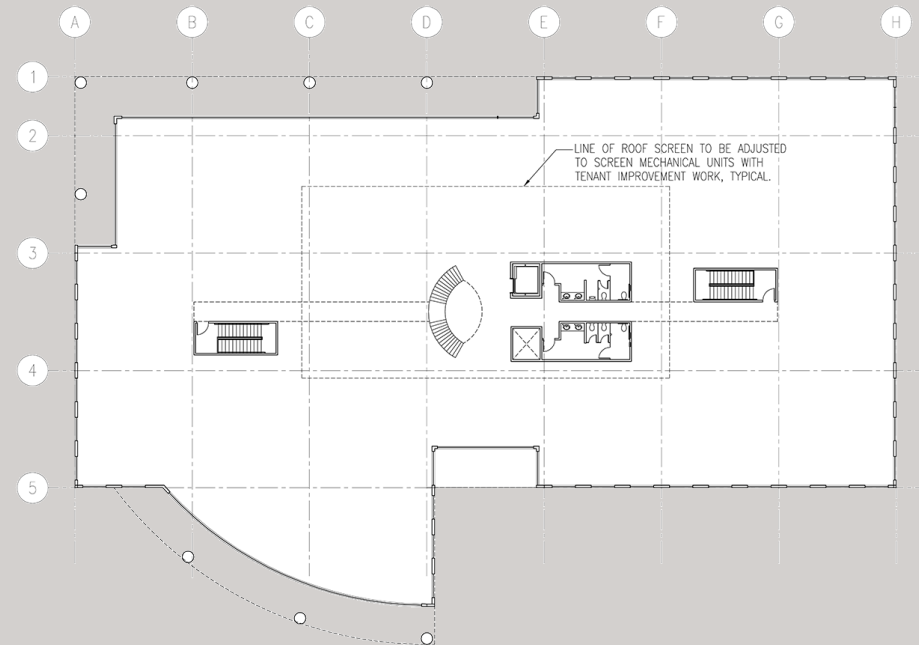
# DEVELOPED PARCEL FOR SALE Santa Rosa Harvest Business Park

3839 Brickway Boulevard

2.58 Acre Parcel - Includes +/-1.15 acres of improved parking, circulation, and landscaping



Proposed First Floor Plan



Proposed Second Floor Plan

# DEVELOPED PARCEL FOR SALE Santa Rosa Harvest Business Park



3839 Brickway Boulevard



EXCLUSIVELY MARKETING BY:

**Shawn Johnson**  
707.528.1400 ext. 238

**Brian Keegan**  
707.528.1400 ext. 249

**James Nobles**  
707.528.1400 ext. 247