

# Landmark Office Building

205 S. Whiting Street  
Alexandria, VA 22304



## HIGHLIGHTS

- Just off I-395 at the Duke Street Exit close to future location of Inova Alexandria Hospital
- Free surface and garage parking
- All-inclusive pricing
- On-site property management and maintenance
- Snack shop in the lobby as well as several medical offices and retail businesses within the building, such as hair salon, gym and payroll processing

## AVAILABLE SUITES

- |             |          |                |
|-------------|----------|----------------|
| • Suite 406 | 1,650 SF | \$5,085/month  |
| • Suite 500 | 6,130 SF | \$18,900/month |
| • Suite 602 | 1,330 SF | \$4,100/month  |
| • Suite 603 | 1,041 sf | \$3,210/month  |

COMING 2026 – MEDICAL SPEC SUITES  
WITH 1 TO 6 EXAM ROOM OPTIONS

## PRICING AND TERMS

- Starting at \$37.00/sf, full service, including daily limited cleaning (price based on limited build out)
- 5 – 10 years

## CONTACT AND FURTHER INFORMATION

**Cecilia Gondor, Managing Member**

L&M Management LLC

101 S. Whiting Street, Suite 113

Alexandria, VA 22304

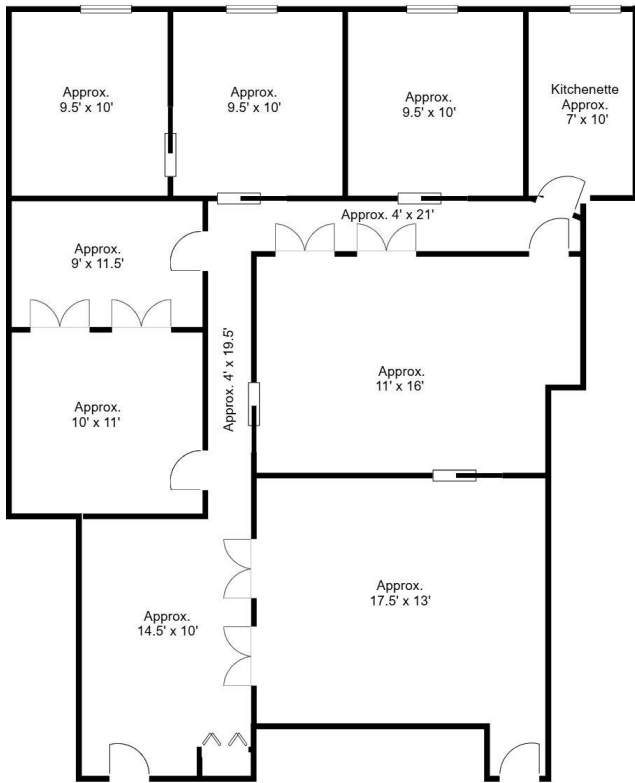
(w) (703) 751-5100

[cgondor@rentatlandmark.com](mailto:cgondor@rentatlandmark.com)

[www.LeaseAtLandmark.com](http://www.LeaseAtLandmark.com)



*Pricing information as of 10/2025 and is subject to change*



rentable square feet include a core factor of 5%

**LANDMARK OFFICE BUILDING**  
**Suite 602**  
 1,330 square feet  
 205 S Whiting Street  
 Alexandria, VA 22304

## SUITE 602

1,330 SF

\$4,100/month

*This space can be combined with Suite 601*

205 S Whiting Street

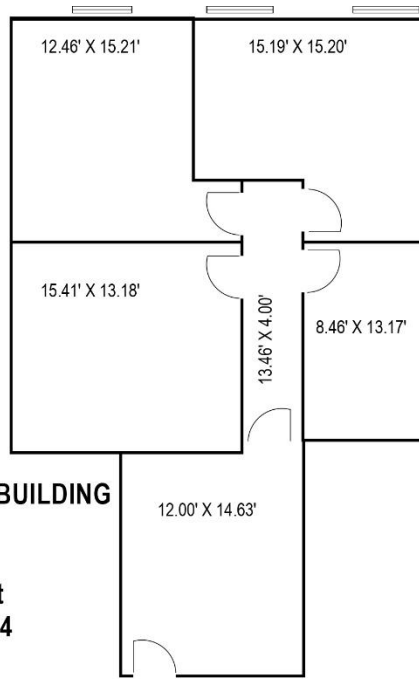
Alexandria, VA 22304

***This top-floor space is excellent for collaboration! Large meeting rooms are surrounded by smaller offices with wide-opening double wood doors to expand or separate areas. The suite has its own HVAC system with 2 thermostats and a kitchenette. Move in ready!***

***Can be combined with Suite 601 and Suite 600 for up to 7, 185 square feet.***



*Pricing information as of 10/2025 and is subject to change*



**LANDMARK OFFICE BUILDING**  
**Suite 603**  
**1041 Square Feet**  
**205 S. Whiting Street**  
**Alexandria, VA 22304**

## SUITE 603

1,41 SF

\$3,210/month

*Top floor suite has a large waiting room area and 4 private offices, two with windows. Of the 4 rooms, three are particularly large and the fourth can be used for a small office, break room and/or storage. Excellent floorplan for an administrative office, counseling or other personalized services.*

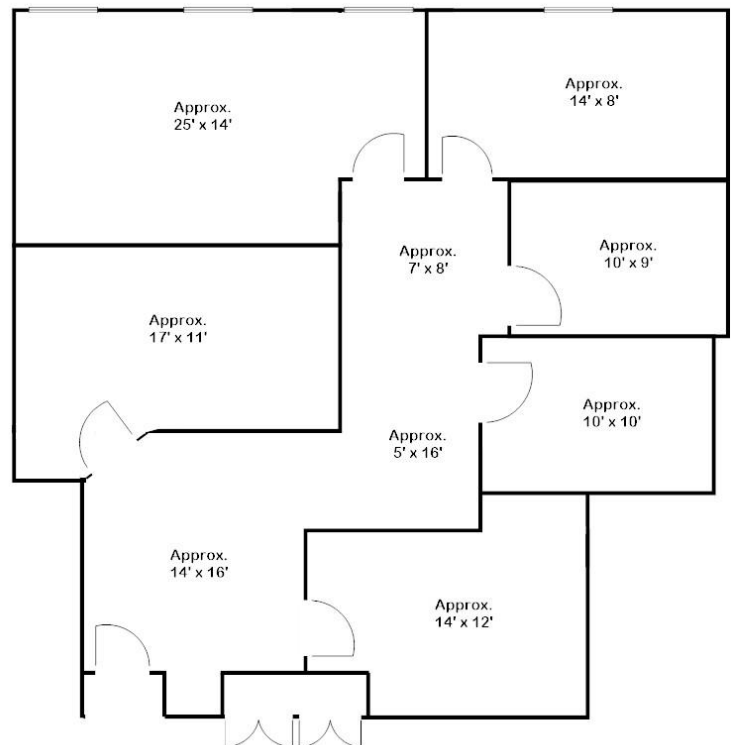
rentable square feet include a core factor of 5%

## SUITE 406

1,650 SF

\$5,085/month

*Excellent layout for administrative work, with built-in workstations in a large open office, plus three private offices, generous reception area and conference/break room with refrigerator and counter.*



rentable square feet include a core factor of 5%

**LANDMARK OFFICE BUILDING**  
**Suite 406**  
**1,650 Square Feet**  
**205 S. Whiting St.**  
**Alexandria, VA 22304**

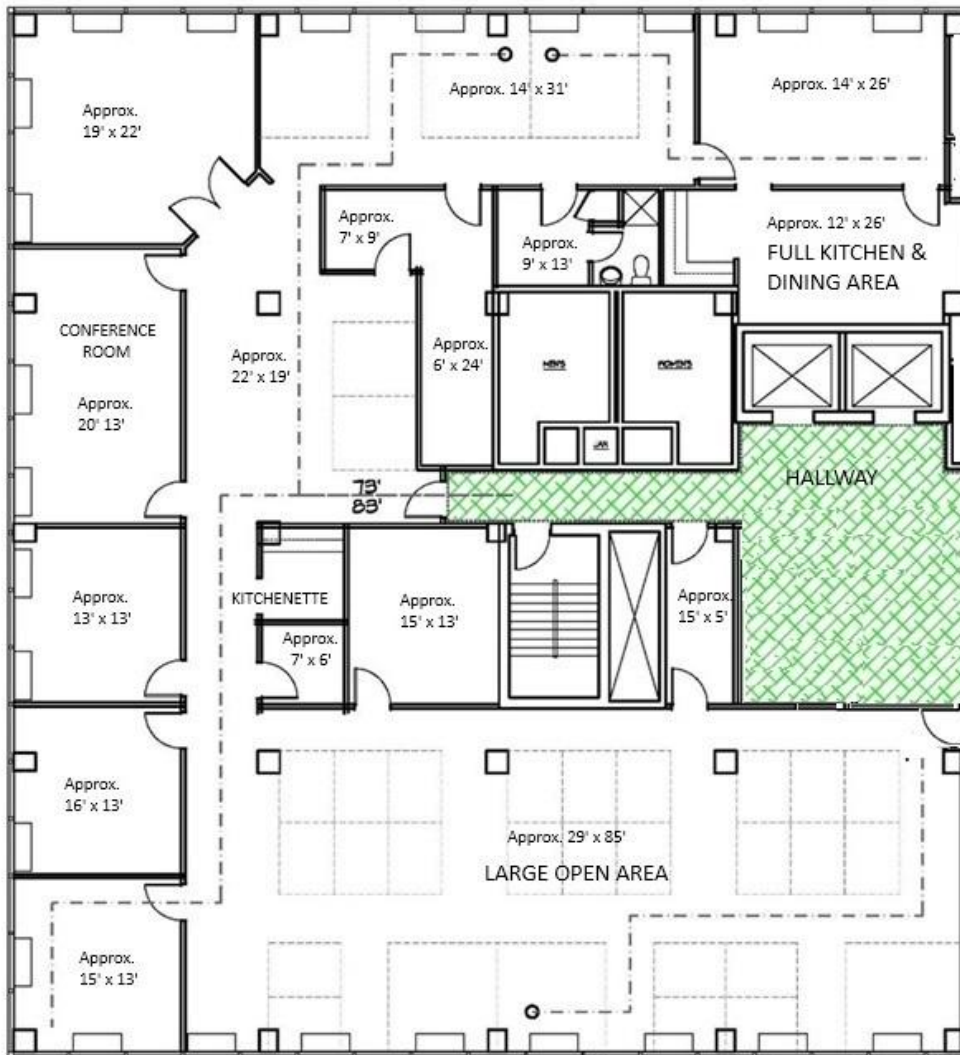
Pricing information as of 10/2025 and is subject to change

## SUITE 500

6,000 SF

\$18,500/month – can be subdivided

*This large administrative office includes an expansive open area as well as a medium-sized co-working area, full kitchen and dining area as well as a separate kitchenette. There is a conference room and extra-large corner executive office. The restroom inside the suite includes a shower. Lot of areas for storage. Several entrances from the hallway allow for easy sub-divisions.*



### LANDMARK OFFICE BUILDING

205 S. Whiting Street  
Alexandria VA 22304  
6,000 square feet  
Suite 500

(can be sub-divided)

rentable square feet include a core factor of 5%



Pricing information as of 10/2025 and is subject to change

CONTACT AND FURTHER INFORMATION – (703) 751-5100 -- [www.LeaseAtLandmark.com](http://www.LeaseAtLandmark.com)