



CUSHMAN &
WAKEFIELD

FOR SALE

NWC of Fountain Mesa Road & Mesa Ridge Parkway

Fountain, Colorado 80817



18.06 Acres of Residential Land For Sale

Sale Price: Contact Broker for Pricing

Cushman & Wakefield is pleased to represent 18.06 acres of residential land in Fountain, Colorado. The site sits proximate to The Markets at Mesa Ridge retail development and provides easy access to I-25 to the west and to the airport and eastern Colorado Springs via Powers Boulevard to the east. This land could be developed for traditional single-family, multi-family, single family for-rent and/or other product types. As the demand for housing in Fountain increases, this site is well-located and has available water and sewer capacity through Widefield Water & Sanitation District. *Please see reverse for additional aerial.*

Property Features

Site Size	18.06 Acres
# of Units	TBD
Avg. Unit Size	TBD
City/County	Fountain/El Paso
Zoning	MF (Multi-Family Residential)/PUD
Mill Levy	86.987
Water/Sewer	Widefield Water & Sanitation District

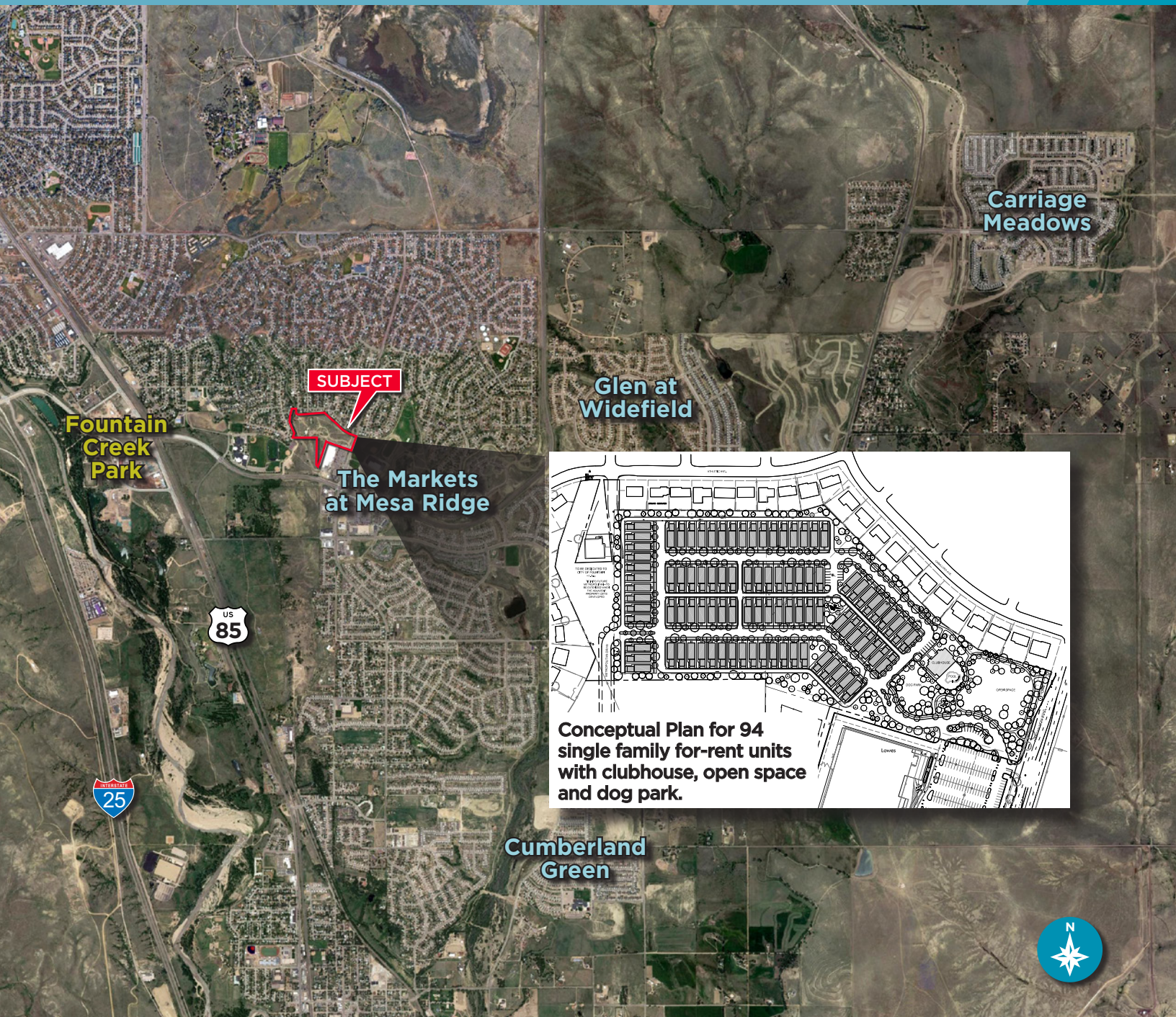


**CUSHMAN &
WAKEFIELD**

FOR SALE

NWC of Fountain Mesa Road & Mesa Ridge Parkway

Fountain, Colorado 80817



SUBJECT

**Fountain
Creek
Park**

**The Markets
at Mesa Ridge**

**Glen at
Widefield**

**Carriage
Meadows**

**Conceptual Plan for 94
single family for-rent units
with clubhouse, open space
and dog park.**

**Cumberland
Green**



For more information, please contact:

Mike Kboudi
Executive Managing Director
+1 303 312 4262
mike.kboudi@cushwake.com

Jim Capecelatro
Senior Managing Director
+1 303 312 4295
jim.capecelatro@cushwake.com

Joey Dybevik
Senior Associate
+1 303 312 1901
joey.dybevik@cushwake.com

1401 Lawrence Street, Suite 1100
Denver, Colorado 80202

T +1 303 292 3700
F +1 303 534 8270

cushmanwakefield.com