

HARRISBURG CLASS "A" OFFICE SPACE AVAILABLE

305 N FRONT STREET

305 N FRONT STREET, HARRISBURG, PA 17101

PROPERTY SUMMARY

Rental Rate:	\$21.95/RSF/Full Service
Square Feet Available:	17,323 RSF
Floor:	6th
Ceiling Height:	9' finished acoustical
County:	Dauphin
Municipal:	City of Harrisburg
Building Size:	52,000 RSF
Lot Size:	1.20 Acres
Parking:	Available
Utilities:	Public
Sprinklers:	Yes
Security:	Electronic Key Card
Signage:	Available



PROPERTY HIGHLIGHTS

- First class office building located along Riverfront Park.
- Rare on-site covered parking available.
- Beautiful unobstructed views of the Susquehanna River, Walnut Street walking bridge, and City Island's FNB Park.
- Located within walking distance to Dauphin County Courthouse, Ronald Reagan Federal Courthouse, PA State Capitol Campus, Whitaker Arts Center, and Strawberry Square mixed use complex.



JASON GRACE, CCIM, SIOR

CEO & MANAGING PRINCIPAL
717.731.1990
jgrace@landmarkcr.com

MICHAEL CURRAN

PRESIDENT & EXECUTIVE MANAGING DIRECTOR
717.731.1990
mcurran@landmarkcr.com



HARRISBURG CLASS "A" OFFICE SPACE AVAILABLE

305 N FRONT STREET

305 N FRONT STREET, HARRISBURG, PA 17101



JASON GRACE, CCIM, SIOR

CEO & MANAGING PRINCIPAL

717.731.1990

jgrace@landmarkcr.com

MICHAEL CURRAN

PRESIDENT & EXECUTIVE MANAGING DIRECTOR

717.731.1990

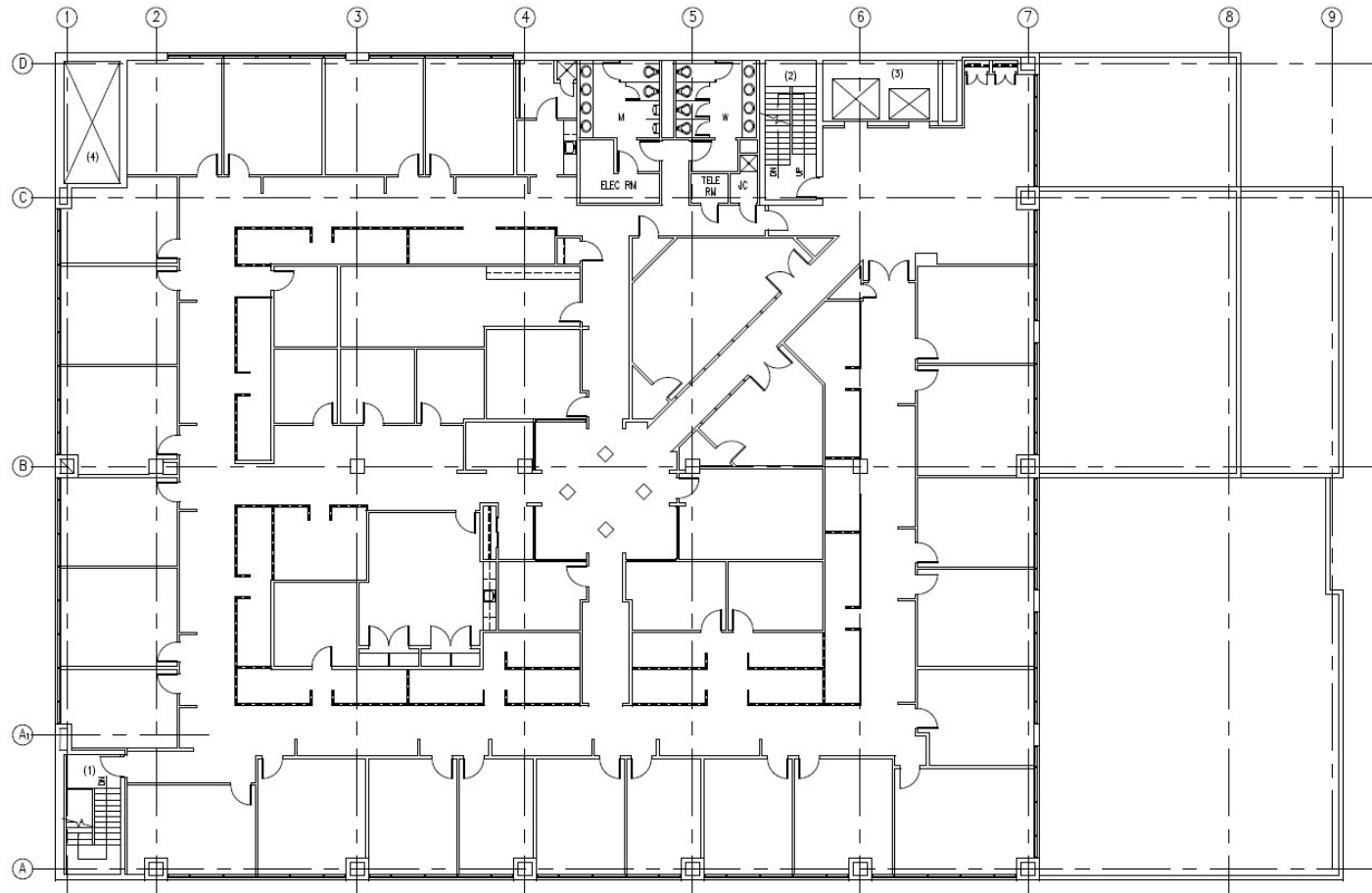
mcurran@landmarkcr.com



HARRISBURG CLASS "A" OFFICE SPACE AVAILABLE

305 N FRONT STREET

305 N FRONT STREET, HARRISBURG, PA 17101



SIXTH FLOOR PLAN
1/8"=1'-0"

WORK STATION
ENCLOSURE PARTITION



JASON GRACE, CCIM, SIOR

CEO & MANAGING PRINCIPAL

717.731.1990

jgrace@landmarkcr.com

MICHAEL CURRAN

PRESIDENT & EXECUTIVE MANAGING DIRECTOR

717.731.1990

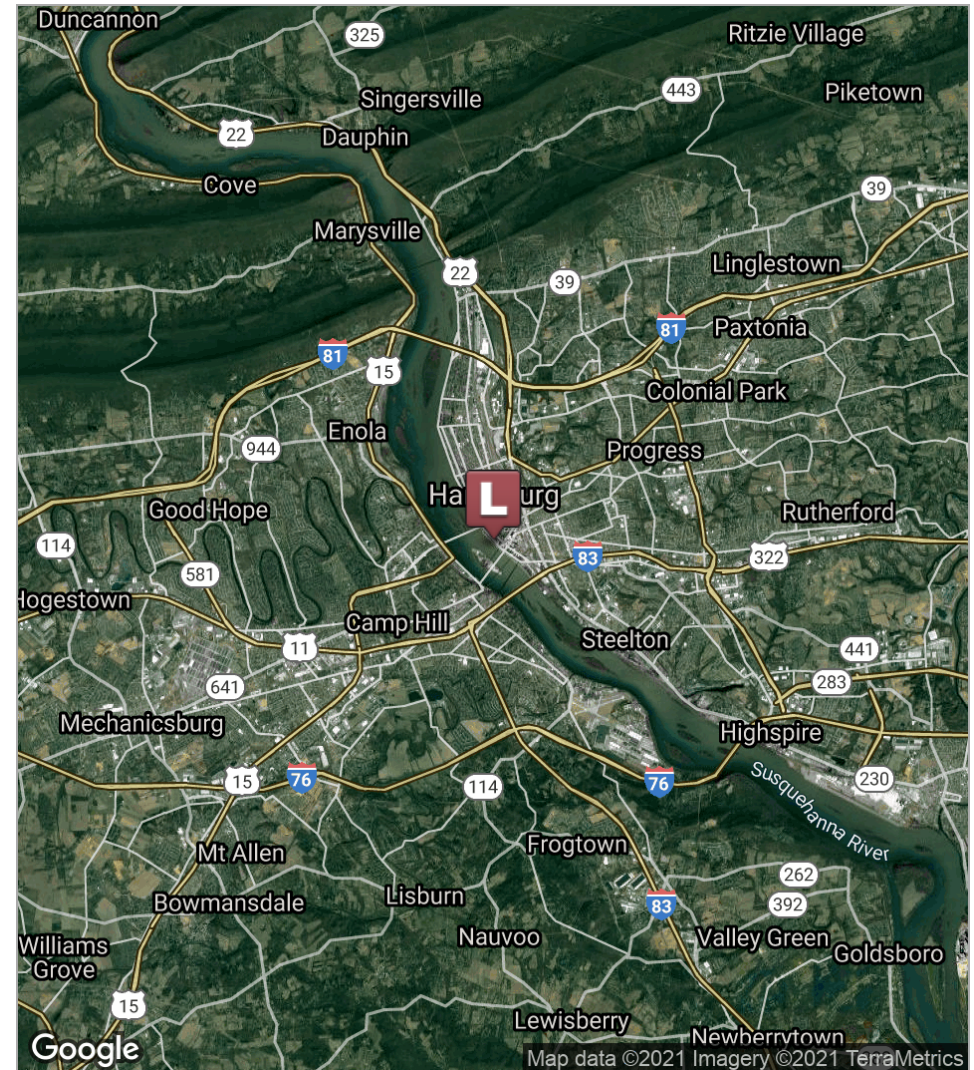
mcurran@landmarkcr.com



HARRISBURG CLASS "A" OFFICE SPACE AVAILABLE

305 N FRONT STREET

305 N FRONT STREET, HARRISBURG, PA 17101



JASON GRACE, CCIM, SIOR

CEO & MANAGING PRINCIPAL

717.731.1990

jgrace@landmarkcr.com

MICHAEL CURRAN

PRESIDENT & EXECUTIVE MANAGING DIRECTOR

717.731.1990

mcurran@landmarkcr.com

