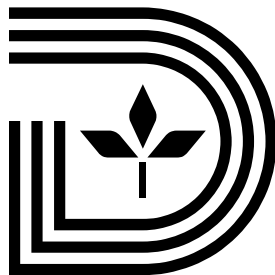


PAVING AND DRAINAGE IMPROVEMENTS

PB17VA13

CAMP WISDOM ROAD

From FM 1382 To Mountain Creek Pkwy



TDLR REVIEW: REGISTERED ACCESSIBILITY SPECIALIST (RAS) INSPECTION IS REQUIRED
 TDLR NO.: TABS2023015882

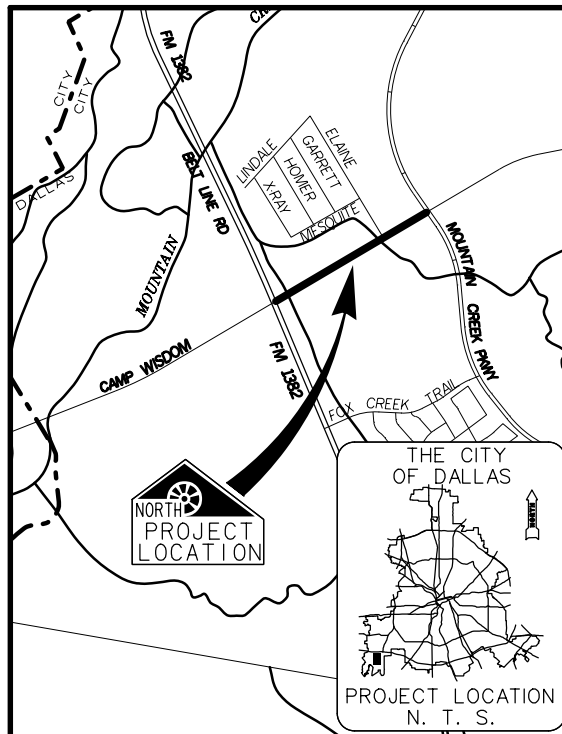
CITY OF DALLAS

DEPARTMENT OF PUBLIC WORKS

NO.	FILE	SHEET NO.	DATE
1	SHEET 7,8,41,42,47-50		06/28/23

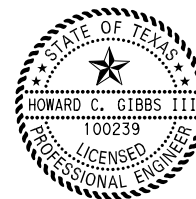
PLAN REVISION SUMMARY

FILE #	SHEETS	DESCRIPTION
311D - 4537	1	COVER SHEET (1 SHT.)
311D - 4537	2 - 3	HORIZONTAL AND VERTICAL CONTROL SHEET (2 SHTS.)
311D - 4537	4 - 5	GENERAL NOTES (2 SHTS.)
311D - 4537	6 - 7	TYPICAL SECTIONS (2 SHTS.)
311D - 4537	8 - 9	QUANTITY SUMMARY (2 SHTS.)
311D - 4537	10 - 15	DEMOLITION PLAN (6 SHTS.)
311D - 4537	16	HORIZONTAL DATA SHEET (1 SHT.)
311D - 4537	17 - 30	PAVING PLAN AND PROFILE (14 SHTS.)
311D - 4537	31 - 32	INTERSECTION LAYOUT (2 SHTS.)
311D - 4537	33 - 34	RETAINING WALL PLAN AND PROFILE (2 SHT.)
421Q - 6244	35 - 36	DRAINAGE AREA MAPS (2 SHTS.)
421Q - 6244	37	DRAINAGE COMPUTATIONS (1 SHT.)
421Q - 6244	38 - 40	HYDRAULIC DATA SHEET (3 SHTS.)
421Q - 6244	41 - 42	CULVERT LAYOUTS (2 SHTS.)
421Q - 6244	43	TEMPORARY SHORING DETAILS (1 SHT.)
421Q - 6244	44 - 45	CULVERT STRUCTURAL DETAILS (2 SHTS.)
421Q - 6244	46 - 50	DRAINAGE PLAN AND PROFILE (5 SHTS.)
421Q - 6244	51	ARMOR CURB FLUME (1 SHT.)
311D - 4537	52 - 55	ILLUMINATION PLAN (4 SHTS.)
311D - 4537	56 - 61	PAVEMENT MARKING AND SIGNAGE PLAN (6 SHTS.)
311D - 4537	62 - 66	TRAFFIC SIGNAL PLAN (5 SHTS.)
311D - 4537	67 - 68	EROSION CONTROL PLAN (2 SHTS.)
311D - 4537	69 - 70	EARTHWORK CALCULATION (2 SHTS.)
311D - 4537	71 - 111	CROSS SECTIONS (41 SHTS.)
311D - 4537	112-114	MODIFIED TXDOT STANDARDS (3 SHTS.)
311D - 4537	1 SET	TXDOT STANDARDS
251D-1	1 SET	STANDARD CONSTRUCTION DETAILS (UPDATED DEC., 2021)
	1 SET	PAVEMENT CUT REPAIR STANDARDS MANUAL (OCT., 2003)



MAPSCO: 61A
 LOCATION MAP - N. T. S.
 Camp Wisdom Rd - 2,480 Ft

LTRA



Lina T. Ramey & Associates, Inc.
 3320 Belt Line Road,
 Farmers Branch, Texas 75234
 214-979-1144 MAIN
 214-979-2480 FAX
 TBPE Registration No. F-782

Howard C. Gibbs III

HOWARD C. GIBBS III, P.E., CFM
 SR. PROJECT MANAGER/FRIM NO. F-782

MAY 31, 2023

DATE

Vanessa Marquez

VANESSA MARQUEZ
 PROJECT MANAGER/DEPARTMENT OF PUBLIC WORKS

JUNE 14, 2023

DATE

Cameron L. Anderson

CAMERON ANDERSON, P.E.
 ENGINEERING PROGRAM ADMINISTRATOR/PUBLIC WORKS

JUNE 15, 2023

DATE

Haytham Hassan

HAYTHAM HASSAN, P.E.,
 ASSISTANT DIRECTOR OF PUBLIC WORKS/CITY ENGINEER

6/16/2023

DATE

Haytham Hassan for Ali Hatefi

ALI HATEFI, P.E., CFM
 DIRECTOR OF PUBLIC WORKS

6/16/2023

DATE

FILE 311D - 4537
 FILE 421Q - 6244



J. DODD SURVEY
ABSTRACT NO. 383

J.A. HUESER SURVEY
ABSTRACT NO. 642

MESQUITE HEIGHTS ADDITION
VOL. 71046, PG. 2467
D.R.D.C.T.

UNITED STATES OF AMERICA
TRACT 201-3
VOL. 78177, PG. 4092
D.R.D.C.T.

TEXAS UTILITIES ELECTRIC -
SUCCESSOR IN TITLE TO
DALLAS POWER AND LIGHT
VOL. 1992, PG. 1
D.R.D.C.T.

FM 1382
(VARIABLE WIDTH ROW)
(VOL. 4435, PG. 869)
D.R.D.C.T.

BLOCK
2/6113

BLOCK
1/6113

UNITED STATES OF AMERICA
TRACT 201-1
VOL. 78177, PG. 4092
D.R.D.C.T.

BEGIN SURVEY BASELINE
P.O.T. STA. 10+00

P.I. STA. 15+47.48

HUNTERS BEND
PHASE 1A
VOL. 2002111, PG. 149
D.R.D.C.T.

FLOODWAY EASEMENT
COMMON AREA "A"
BLOCK
5/8709

J. ROCKWELL SURVEY
ABSTRACT NO. 1266

WIDGEON WAY
(VARIABLE WIDTH ROW)
(VOL. 2002111, PG. 149)
D.R.D.C.T.

HUNTERS BEND
PHASE 1A
VOL. 2002111, PG. 149
D.R.D.C.T.

BLOCK
2/8709

BLOCK
3/8709

LAYSAN COURT
(VARIABLE WIDTH ROW)
(VOL. 2002111, PG. 149)
D.R.D.C.T.

REFERENCE MATERIALS SHEET

TEXAS UTILITIES ELECTRIC - SUCCESSOR IN TITLE TO DALLAS POWER AND LIGHT - VOL. 1992, PG. 1 D.R.D.C.T.

HUNTERS BEND PHASE 1A - VOL. 2002111, PG. 149 D.R.D.C.T.

MESQUITE HEIGHTS ADDITION - VOL. 71046, PG. 2467 D.R.D.C.T.

UNITED STATES OF AMERICA TRACT 201-1 - VOL. 78177, PG. 4092 D.R.D.C.T.

UNITED STATES OF AMERICA TRACT 201-3 - VOL. 78177, PG. 4092 D.R.D.C.T.

MOUNTAIN CREEK PARKWAY PHASE I AT THE VILLAGES OF MOUNTAIN CREEK - VOL. 87157, PG. 2335 D.R.D.C.T.

LD MOUNTAIN CREEK, LLC TRACT 3 - INST. NO. 20190018598 O.P.R.D.C.T.

LD MOUNTAIN CREEK, LLC TRACT 6 - INST. NO. 20190018598 O.P.R.D.C.T.

FIRST INDUSTRIAL, L.P. - INST. NO. 201900210514 O.P.R.D.C.T.

MOUNTAIN TERRACE ADDITION - VOL. 2003251, PG. 28 O.P.R.D.C.T.

Line Symbology

SURVEY REFERENCE LINE = CENTERLINE

R.O.W. BOUNDARY SUBDIVISION BOUNDARY SURVEY BASELINE = CENTERLINE

LOT BOUNDARY DEED PROPERTY LINE ABSTRACT LINE

REFERENCE POINTS LIST

PNT #	NORTHING	EASTING	NORTHING	EASTING	DESC.
301	7347.61	8742.83	6926402.11	2438409.97	1/2" IRF
305	7126.55	9024.98	6926181.08	2438692.09	1/2" IRF W/ "MCCULLAH" CAP
309	7301.95	8578.99	6926356.46	2438646.10	1/2" IRF - BENT
318	7124.42	8180.25	6926178.95	2437847.47	5/8" IRF
327	5988.52	7324.80	6925043.21	2436592.14	5/8" IRF - DISTURBED
331	6673.17	7529.90	6925727.77	2437597.15	5/8" IRF W/ "CARTER & BURGESS" CAP
335	7078.16	8402.97	6926132.71	2438070.16	1/2" IRF W/ "PREMIER SURVEYING" CAP
336	7039.29	8336.67	6926093.84	2438003.87	1/2" IRF
337	6992.17	8256.26	6926046.73	2437923.47	1/2" IRF
338	7188.73	8339.41	6926243.25	2438006.61	1/2" IRF
351	7178.70	8792.07	6926233.22	2438459.21	1/2" IRF
352	7163.18	8864.27	6926217.71	2438531.4	1/2" IRF
353	7417.42	8839.99	6926471.91	2438507.12	1/2" IRF
A405	6125.39	6791.43	6925180.07	2436458.84	1/2" IRF W/ "RPLS 4773" CAP
A406	6126.30	6792.18	6925180.97	2436459.59	5/8" IRF W/ "RPLS 5925" CAP
A20002	6309.41	7100.80	6925364.06	2436768.17	5/8" IRF W/ "RPLS 5925" CAP
A20007	6902.27	7751.35	6925956.84	2437418.63	1/2" IRF
A20008	6877.54	7708.24	6925932.11	2437375.53	1/2" IRF - BENT
A20024	6499.35	7422.47	6925553.97	2437089.79	1/2" IRF
A20025	6524.70	7465.45	6925579.32	2437132.77	3/8" IRF
21009	6326.88	7665.27	6925381.53	2437332.56	5/8" IRF W/ "CARTER & BURGESS" CAP

PROJECT BENCHMARK DESCRIPTIONS

BM# 61A-Y-1: Square cut on west end of concrete headwall at the northeast corner of Camp Wisdom Road & Belt Line Road
Elevation = 473.78'

BM# 61A-Y-2: Square cut at center of storm inlet, northeast side of Hunters Bend Lane, 145' south of the centerline of Widgeon Way
Elevation = 476.16'

BM# 61A-Y-3: Square cut at center of storm inlet, southeast side of Camp Wisdom Road, 584' east of centerline of Hunters Bend Lane
Elevation = 477.77'

BM# 61A-Y-4: Square cut on the west end of concrete headwall, north side of Camp Wisdom Rd., 170' west of the centerline of Turnout Lane.
Elevation = 479.97'

BM# 61A-Z-1: Square cut on center of storm inlet in median of Camp Wisdom Road, 127' east of centerline of Mountain Creek Parkway
Elevation = 488.19'

CITY OF DALLAS/DWU BENCHMARK DESCRIPTIONS

Dallas BM # 71A-B-2S
SWDBM on the northwest corner of 32'x200' concrete bridge on Camp Wisdom Road, over Mountain Creek, 0.6 miles west of SH 1382 (Belt Line Road).
Elev. = 474.420'

Dallas BM # 71A-D-2
A square is cut at center of storm sewer inlet on north side of Mountain Creek Parkway, 0.20 miles west of Eagle Ford Road.
Elev. = 581.74'

DISTANCE DESIGNATION TABLE

Distance	Description
140.05'p	Distances taken from plats
139.95'c	Distances calculated from digital file
139.97'm	Distances measured on the field
140.02'd	Distances from deed records

LEGEND

- IRON ROD (Site As Noted)
- IRON PIPE (Site As Noted)
- ✕ CUT "X" IN CONCRETE
- C.M. CONTROLLING MONUMENT
- BENCHMARK
- MAG NAIL W/ REF. WASHER
- △ 3" ALUM. DISK, STAMPED "FLOODWAY MARKER"

NOTE:

- Baseline stations only monumented at every 500' station, P.C.s, F.O.C.s, P.T.s, with a set Mag Nail w/ reference washer unless otherwise noted.
- Easements shown are dedicated by plat unless otherwise noted.
- Elements denoted "Controlling Monument" indicate a Boundary Control Monument only. Design, alignment and construction are controlled on the Survey Baseline / Centerline.
- All Benchmarks are on City of Dallas Water Department datum, April 2014.
- Basis of Bearing: Bearings in this document refer to the NAD-83 State Plane Coordinate System, Texas North Central Zone 4202 established by the ALLTERRA RTK NETWORK.

APPROVED
CITY OF DALLAS
PBW SURVEY DIVISION
DATE: 08-31-2022

SHEET
1
2
OF

CONTROLLING MONUMENT LIST

PNT #	NORTHING	EASTING	NORTHING	EASTING	DESC.
302	7231.78	8962.4	6926286.30	2438629.516	1/2" IRF W/ "MCCULLAH" CAP
307	7385.20	9119.6	6926436.697	2438786.696	1/2" IRF W/ "MCCULLAH" CAP
330	6174.39	7089.76	6925229.055	2436757.125	3" ALUM. DISK "FLOODWAY MARKER"
321	6227.43	7178.73	6925282.05	2436846.091	3" ALUM. DISK "FLOODWAY MARKER"
323	6166.99	7286.91	6925221.66	2436954.25	1/2" IRF
329	6080.51	7269.76	6925135.15	2436937.104	1/2" IRF W/ "ALS LAND SURV" CAP
330	6127.35	7242.02	6925182.018	2436909.368	5/8" IRF
332	6783.85	8117.00	6925838.43	2437784.224	5/8" IRF W/ "CARTER & BURGESS" CAP
347	6580.78	7984.59	6925635.392	2437651.835	1/2" IRF W/ "MAKI ASSOCIATES" CAP
348	6450.96	7765.54	6925505.591	2437432.813	1/2" IRF W/ "MAKI ASSOCIATES" CAP
349	6270.13	7460.97	6925324.778	2437128.285	1/2" IRF
21008	6366.44	7677.91	6925421.081	2437345.194	FX
21010	6325.44	7669.50	6925380.08	2437336.885	5/8" IRF W/ "CARTER & BURGESS" CAP
21011	6574.18	8122.36	6925628.795	2437789.59	FX
21013	6572.59	8086.31	6925627.197	2437753.545	1/2" IRF W/ "MAKI ASSOCIATES" CAP
21014	6573.30	8081.81	6925627.911	2437749.047	1/2" IRF W/ "MAKI ASSOCIATES" CAP
21015	6524.64	8182.22	6925579.257	2437849.441	FX

SURVEY BASELINE POINTS LIST

STA	NORTHING	EASTING	NORTHING	EASTING	DESC.
10+00.00	6013.81	6705.33	6925058.50	2436372.75	MAG NAIL W/WASHER
10+00.00 100' NW	6106.24	6667.15	6925160.92	2436334.58	MAG NAIL W/WASHER
10+00.00 200' NW	6198.67	6628.98	6925233.33	2436296.41	MAG NAIL W/WASHER
10+00.00 100' SE	5921.39	6743.50	6924976.09	2436410.92	MAG NAIL W/WASHER
10+00.00 200' SE	5828.96	6781.67	6924883.68	2436449.08	MAG NAIL W/WASHER
10+00.00 100' SW	5962.78	6619.33	6925017.48	2436286.76	MAG NAIL W/WASHER
10+00.00 200' SW	5911.75	6533.33	6924966.45	2436200.77	MAG NAIL W/WASHER
15+00.00	6268.97	7135.32	6925323.63	2436802.68	MAG NAIL W/WASHER
15+47.48	6293.21	7176.15	6925347.86	2436843.51	MAG NAIL W/WASHER
15+47.48 100' RIGHT	6207.21	7227.18	6925251.87	2436894.53	MAG NAIL W/WASHER
15+47.48 200' RIGHT	6121.21	7278.22	6925175.88	2436945.56	MAG NAIL W/WASHER
20+00.00	6524.13	7565.31	6925578.76	2437232.61	MAG NAIL W/WASHER

Certification

I certify that the Rights-of-Way, the Center-Line monuments defining those Rights-of-Way, and the Benchmarks (BM) shown hereon were established or verified by an on-the-ground survey performed under my direct supervision, and substantially complies with the historical record on file in the City of Dallas Records Vault. This certification only pertains to the surveys performed under my direct supervision. Additions to this drawing or points set or calculated by others are not part of this certification.

Dwayne H. Copeland
Registered Professional Land Surveyor #5470

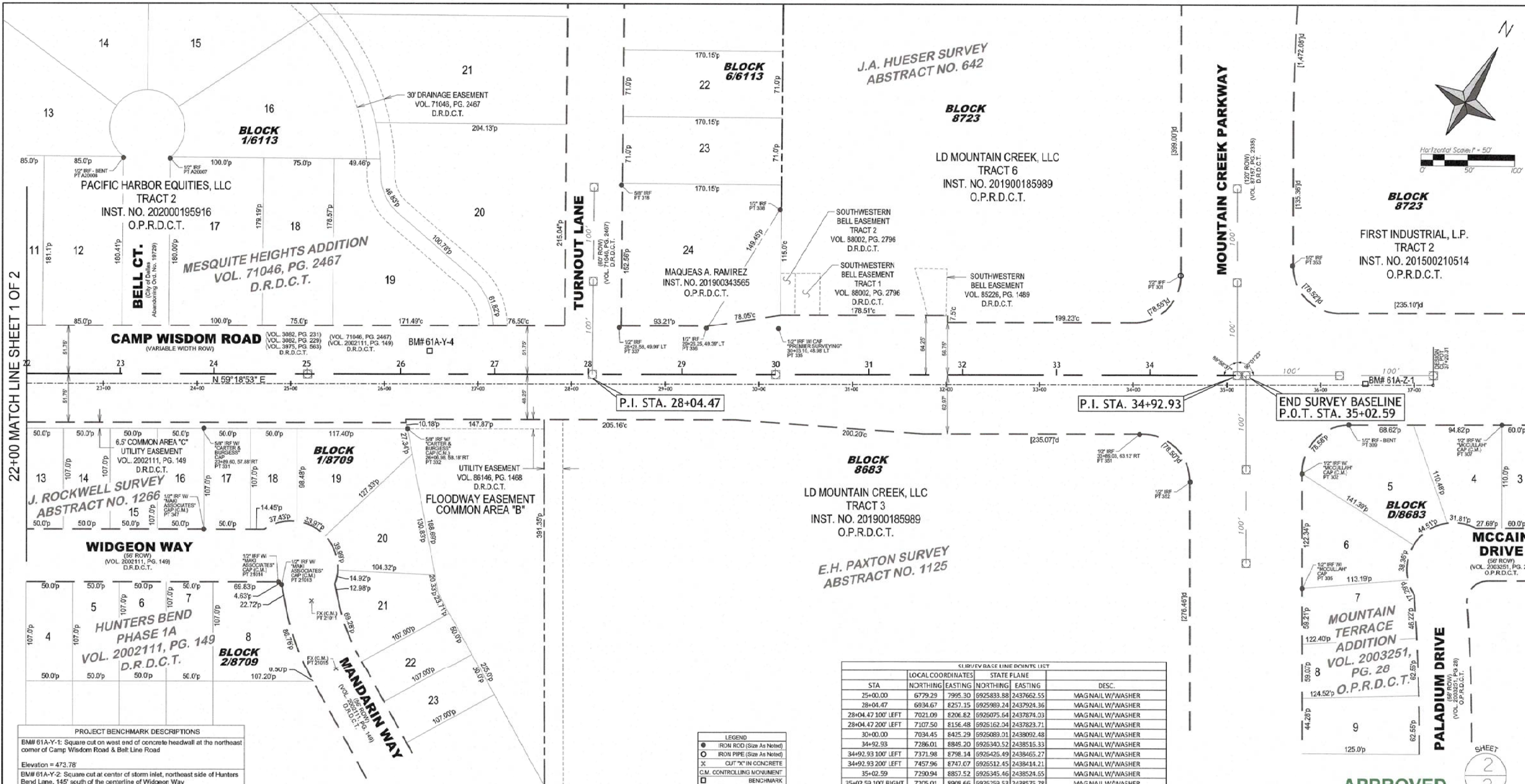
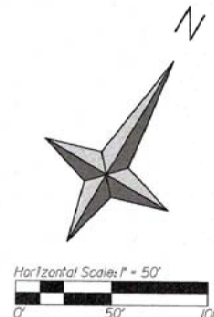


PB17VA13
HORIZONTAL & VERTICAL CONTROL
CAMP WISDOM ROAD
FROM FM 1382 TO MOUNTAIN CREEK PARKWAY

DEPARTMENT OF PUBLIC WORKS
PREPARED BY PJB SURVEYING, LLC

TECHNICIAN	DESIGN FILE	PATH AND NAME	DATE
J. CARNEY	S:\PJB Surveying\Projects\13 LIRA Dallas Bond\Camp Wisdom RW\HW		7-22-22
PARTY CHIEF	CALCULATIONS	SCALE	FILE NUMBER
W. RINGO	P. BALDASARO	1"=50'	311D 4537

22+00 MATCH LINE SHEET 1 OF 2



PROJECT BENCHMARK DESCRIPTIONS

BM# 61A-Y-1: Square cut on west end of concrete headwall at the northeast corner of Camp Wisdom Road & Belt Line Road
Elevation = 473.78'

BM# 61A-Y-2: Square cut at center of storm inlet, northeast side of Hunters Bend Lane, 145' south of the centerline of Widgeon Way
Elevation = 476.16'

BM# 61A-Y-3: Square cut at center of storm inlet, southeast side of Camp Wisdom Road, 584' east of centerline of Hunters Bend Lane
Elevation = 477.77'

BM# 61A-Y-4: Square cut on the west end of concrete headwall, north side of Camp Wisdom Rd., 170' west of the centerline of Turnout Lane.
Elevation = 479.97'

BM# 61A-Z-1: Square cut on center of storm inlet in median of Camp Wisdom Road, 127' east of centerline of Mountain Creek Parkway
Elevation = 488.19'

CITY OF DALLAS/DWU BENCHMARK DESCRIPTIONS

Dallas BM # 71A-B-2S
SWDBM on the northwest corner of 32'x200' concrete bridge on Camp Wisdom Road, over Mountain Creek, 0.6 miles west of SH 1382 (Belt Line Road).
Elev. = 474.420'

Dallas BM # 71A-D-2
A square is cut at center of storm sewer inlet on north side of Mountain Creek Parkway, 0.20 miles west of Eagle Ford Road.
Elev. = 581.74'

NOTE:

- Baseline stations only monumented at every 500' station, P.C.'s, P.O.C.'s, P.T.'s, with a set Mag Nail w/ reference washer unless otherwise noted.
- Easements shown are dedicated by plat unless otherwise noted.
- Elements denoted "Controlling Monument" indicate a Boundary Control Monument only. Design, alignment and construction are controlled on the Survey Baseline/Centerline.
- All Benchmarks are on City of Dallas Water Department datum, April 2014.
- Basis of Bearing:
Bearings in this document refer to the NAD-83 State Plane Coordinate System, Texas North Central Zone 4202 established by the ALLTERRA RTK NETWORK.

REFERENCE MATERIALS SHEET

TEXAS UTILITIES ELECTRIC - SUCCESSOR IN TITLE TO DALLAS POWER AND LIGHT - VOL. 1992, PG. 1 D.R.D.C.T.

HUNTERS BEND PHASE 1A - VOL. 2002111, PG. 149 D.R.D.C.T.

MESQUITE HEIGHTS ADDITION - VOL. 71046, PG. 2467 D.R.D.C.T.

UNITED STATES OF AMERICA TRACT 201-4 - VOL. 78177, PG. 4092 D.R.D.C.T.

UNITED STATES OF AMERICA TRACT 201-3 - VOL. 78177, PG. 4092 D.R.D.C.T.

MOUNTAIN CREEK PARKWAY PHASE I AT THE VILLAGES OF MOUNTAIN CREEK - VOL. 87157, PG. 2335 D.R.D.C.T.

LD MOUNTAIN CREEK, LLC TRACT 3 - INST. NO. 201900185989 O.P.R.D.C.T.

LD MOUNTAIN CREEK, LLC TRACT 6 - INST. NO. 201900185989 O.P.R.D.C.T.

FIRST INDUSTRIAL, L.P. - INST. NO. 201500210514 O.P.R.D.C.T.

MOUNTAIN TERRACE ADDITION - VOL. 2003251, PG. 28 O.P.R.D.C.T.

DISTANCE DESIGNATION TABLE

140.05'p	Distances taken from plats
139.95'c	Distances calculated from digital file
139.97'm	Distances measured on the field
140.02'd	Distances from deed records

Line Symbology

SURVEY REFERENCE LINE = CENTERLINE

R.O.W. BOUNDARY

SUBDIVISION BOUNDARY

SURVEY BASELINE = CENTERLINE

LOT BOUNDARY

DEED PROPERTY LINE

ABSTRACT LINE

CL/UV BASE LINE POINTS LIST

STA	LOCAL COORDINATES	STATE PLANE	DESC.
25+00.00	6779.29 7995.30	6925833.88 2437662.55	MAG NAIL W/WASHER
28+04.47	6934.67 8257.15	6925989.24 2437924.36	MAG NAIL W/WASHER
28+04.47 100' LEFT	7021.09 8206.82	6926075.64 2437874.03	MAG NAIL W/WASHER
28+04.47 200' LEFT	7107.50 8156.48	6926162.04 2437823.71	MAG NAIL W/WASHER
30+00.00	7034.45 8425.29	6926089.01 2438092.48	MAG NAIL W/WASHER
34+92.93	7286.01 8845.20	6926340.52 2438515.33	MAG NAIL W/WASHER
34+92.93 100' LEFT	7371.98 8798.14	6926426.49 2438465.27	MAG NAIL W/WASHER
34+92.93 200' LEFT	7457.96 8747.07	6926512.45 2438414.21	MAG NAIL W/WASHER
35+02.59	7290.94 8857.52	6926345.46 2438524.55	MAG NAIL W/WASHER
35+02.59 100' RIGHT	7205.01 8908.66	6926259.53 2438575.78	MAG NAIL W/WASHER
35+02.59 200' RIGHT	7119.07 8958.79	6926173.51 2438626.91	MAG NAIL W/WASHER
35+02.59 100' NE	7341.97 8943.52	6926395.48 2438610.54	MAG NAIL W/WASHER
35+02.59 200' NE	7393.01 9025.52	6926447.51 2438695.52	MAG NAIL W/WASHER

Certification

I certify that the Rights-of-Way, the Center-Line monuments defining those Rights-of-Way, and the Benchmarks (BM) shown hereon were established or verified by an on-the-ground survey performed under my direct supervision, and substantially complies with the historical record on file in the City of Dallas Records Vault. This certification only pertains to the surveys performed under my direct supervision. Additions to this drawing or points set or calculated by others are not part of this certification.

Dwayne H. Copeland 7/22/22
Dwayne H. Copeland
Registered Professional Land Surveyor #5470

PB17VA13

HORIZONTAL & VERTICAL CONTROL

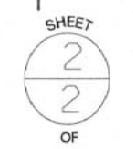
CAMP WISDOM ROAD

FROM FM 1382 TO MOUNTAIN CREEK PARKWAY

DEPARTMENT OF PUBLIC WORKS

PREPARED BY PJB SURVEYING, LLC

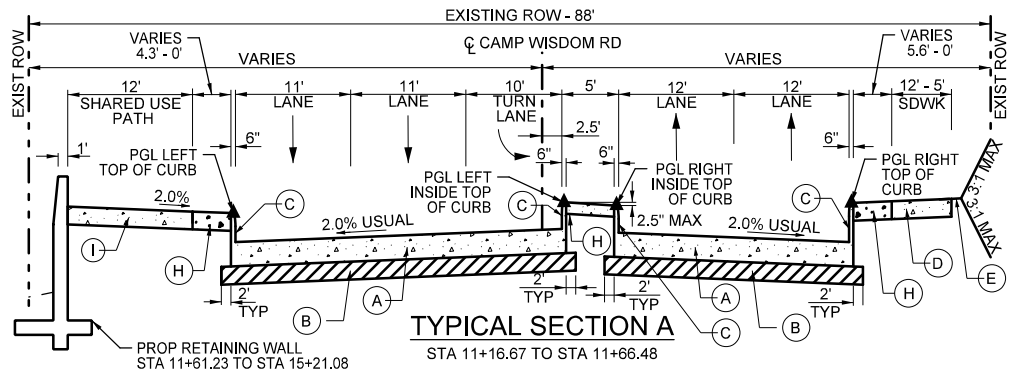
TECHNICIAN	DESIGN FILE	PATH AND NAME	DATE	
J. CARNEY	S:\PJB Surveying\Projects\17 LTRA Dallas Bond\Camp Wisdom Rd\HW		7-22-22	
PARTY CHIEF	CALCULATIONS	SCALE	FILE	NUMBER
W. RINGO	P. BALDASARO	1"=50'	311D	4537



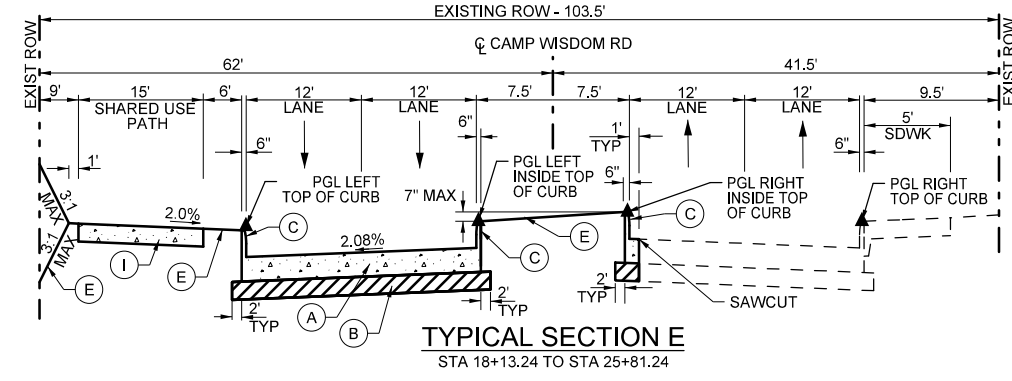
APPROVED

CITY OF DALLAS
PBW SURVEY DIVISION
DATE: 08-31-2022

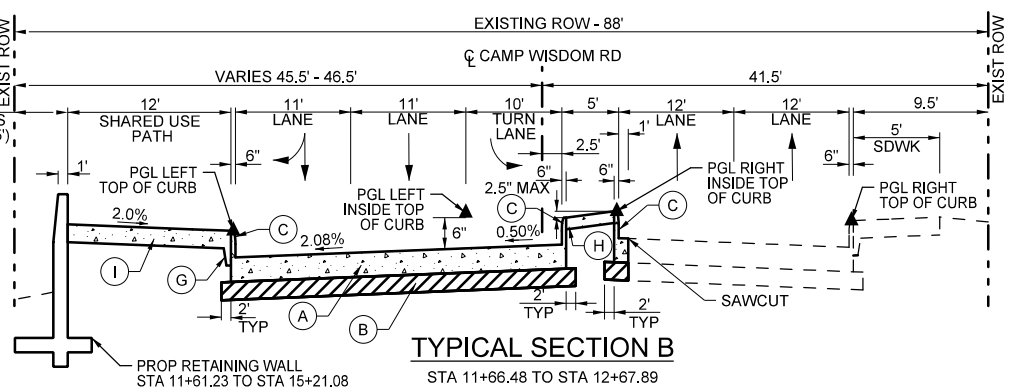
4/6/2023 6:03:59 PM NAME: c:\pwworking\l\trcoeng\neers-dw-bentley.com\trcoeng\neers-dw-01\jguarrier\cell\trcoeng\neers-dw-01\17VA13-C-SC-01.dgn



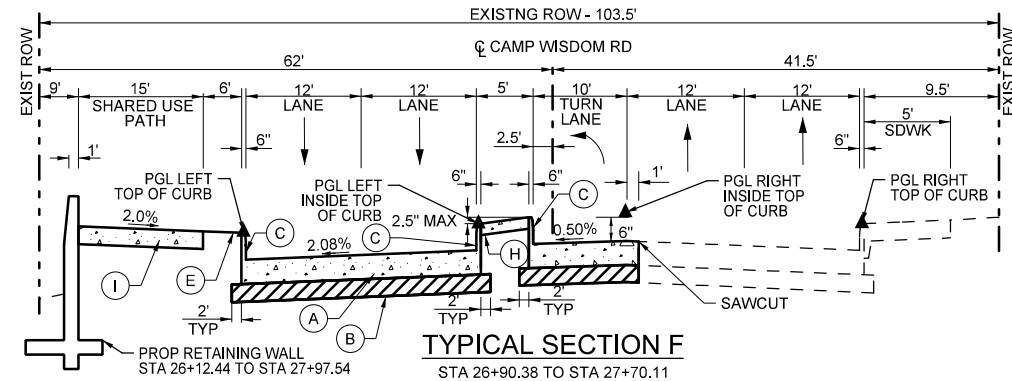
TYPICAL SECTION A
STA 11+16.67 TO STA 11+66.48



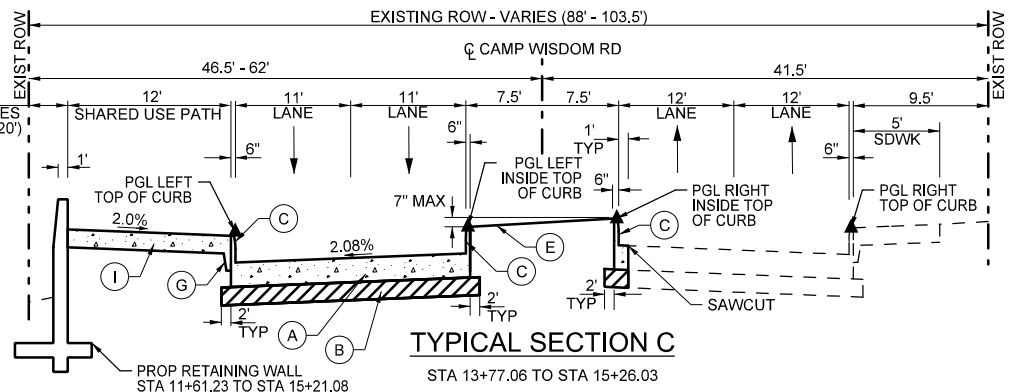
TYPICAL SECTION E
STA 18+13.24 TO STA 25+81.24



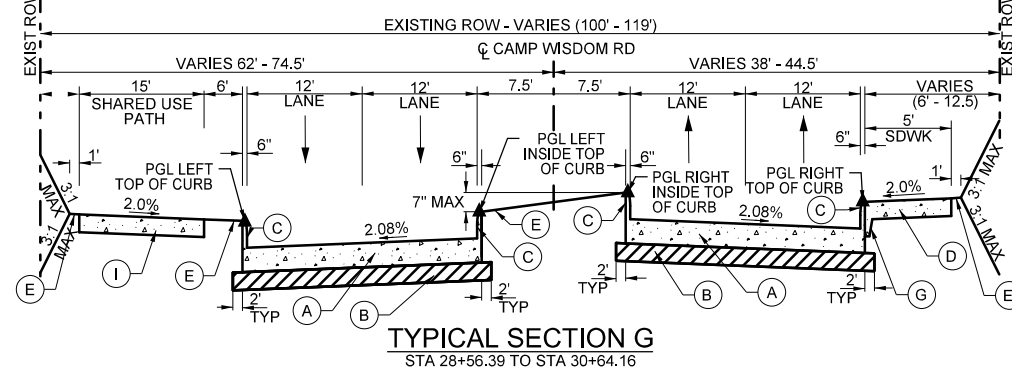
TYPICAL SECTION B
STA 11+66.48 TO STA 12+67.89



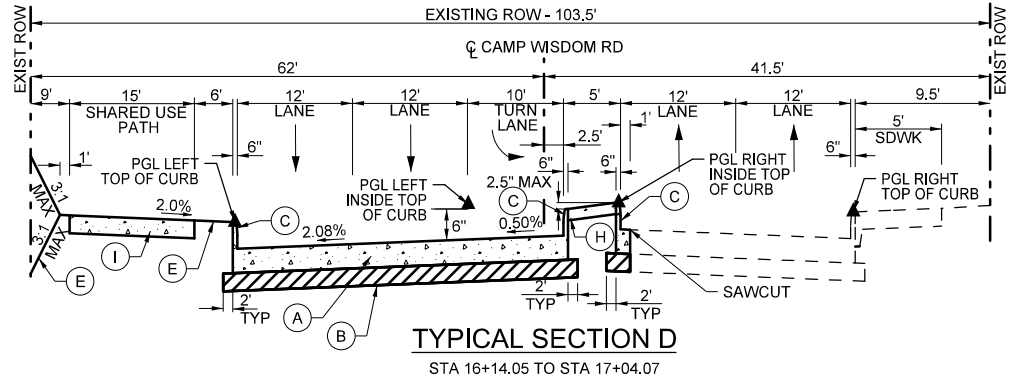
TYPICAL SECTION F
STA 26+90.38 TO STA 27+70.11



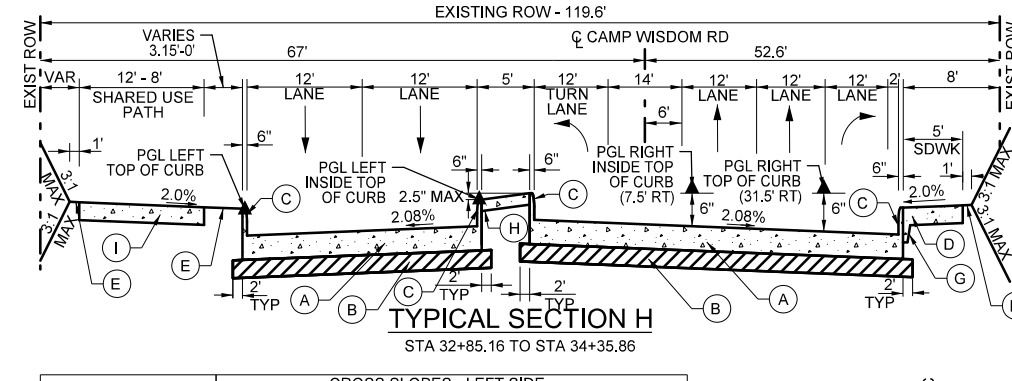
TYPICAL SECTION C
STA 13+77.06 TO STA 15+26.03



TYPICAL SECTION G
STA 28+56.39 TO STA 30+64.16



TYPICAL SECTION D
STA 16+14.05 TO STA 17+04.07



TYPICAL SECTION H
STA 32+85.16 TO STA 34+35.86

STA 9+56.07 TO STA 11+16.67
PAVEMENT TRANSITION FROM
EXISTING PAVEMENT TO
TYPICAL SECTION A

STA 12+67.89 TO STA 13+77.06
PAVEMENT TRANSITION FROM
TYPICAL SECTION B TO
TYPICAL SECTION C

STA 15+26.03 TO STA 16+14.05
PAVEMENT TRANSITION FROM
TYPICAL SECTION C TO
TYPICAL SECTION D

STA 17+04.07 TO STA 18+13.24
PAVEMENT TRANSITION FROM
TYPICAL SECTION D TO
TYPICAL SECTION E

STA 25+81.24 TO STA 26+90.41
PAVEMENT TRANSITION FROM
TYPICAL SECTION E TO
TYPICAL SECTION F

STA 27+70.11 TO STA 28+56.39
PAVEMENT TRANSITION FROM
TYPICAL SECTION F TO
TYPICAL SECTION G

STA 30+64.16 TO STA 32+85.16
PAVEMENT TRANSITION FROM
TYPICAL SECTION G TO
TYPICAL SECTION H

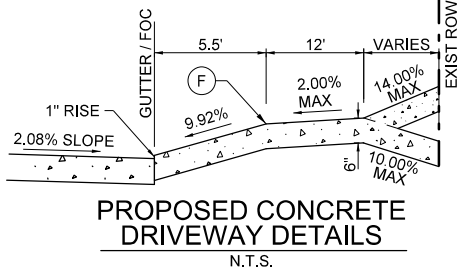
TYPICAL SECTION LEGEND

- (A) 11" REINFORCED CONCRETE PAVEMENT
465
- (B) 8" FLEX BASE (CRUSHED STONE) (SEE NOTE 1)
247D
- (C) 6" CONCRETE INTEGRAL CURB
458
- (D) 4" REINFORCED CONCRETE SIDEWALK
355
- (E) BLOCK SODDING (BERMUDA OR ST AUGUSTINE)
607A
- (F) 6" REINFORCED CONCRETE DRIVEWAY
457
- (G) SIDEWALK LUG
623
- (H) 4" CONCRETE MEDIAN PAVEMENT
356
- (I) 6" REINFORCED CONCRETE PAD/BIKE PATH
531

NOTES:

1. FLEX BASE SUBGRADE WITH CRUSHED "CHICO" STONE SHALL BE PERFORMED IN ACCORDANCE WITH THE SPECIFICATIONS & SPECIAL PROVISIONS BEFORE THE PAVEMENT IS PLACED. SUBGRADE SHALL BE CUT TO DESIGN BOTTOM OF PAVEMENT ELEVATION, SCARIFIED TO A DEPTH OF 8" AND TO A WIDTH OF TWO FEET OUTSIDE OF THE PAVEMENT LIMITS AND COMPACTED TO A DENSITY OF 98% STANDARD PROCTOR AT OPTIMUM MOISTURE CONTENT. RECOMMENDATIONS TO BE CONFIRMED BY GEOTECHNICAL ANALYSIS AND REPORT.
2. REFER TO ROADWAY CROSS-SLOPE TABLE FOR LINEAR PAVEMENT TRANSITION INFORMATION.

CROSS SLOPES - LEFT SIDE	
LIMITS	TRANSITION CROSS SLOPE (FROM X.XX% TO X.XX%)
STA 9+56.07 TO STA 10+82.00	+0.04%
STA 10+82.00 TO STA 11+66.48	+0.04% TO -2.08%
STA 11+66.48 TO STA 34+00.00	-2.08%
STA 34+00.00 TO STA 34+35.86	-2.08% TO -2.00%
CROSS SLOPES - RIGHT SIDE	
LIMITS	TRANSITION CROSS SLOPE (FROM X.XX% TO X.XX%)
STA 9+56.07 TO STA 10+82.00	+0.04%
STA 10+82.00 TO STA 11+66.48	+0.04% TO -2.08%
STA 11+66.48 TO STA 33+50.00	-2.08%
STA 33+50.00 TO STA 34+35.86	-2.08% TO +1.17%



PROPOSED CONCRETE DRIVEWAY DETAILS
N.T.S.



4/6/2023

1
2

LTRA Lina T. Ramey & Associates, Inc. 214-979-1144 MAIN
3320 Belt Line Road 214-979-2480 FAX
Farmers Branch, Texas 75234 TBPE Registration No. F-782

TYPICAL SECTIONS
CAMP WISDOM ROAD
FROM FM 1382 TO MOUNTAIN CREEK PKWY
PUBLIC WORKS DEPARTMENT
CITY OF DALLAS, TEXAS

DESIGN	DRAWN	DATE	SCALE	NOTES	FILE	NO.
LTRA	LTRA	APR 2023	N.T.S.	6 / 114	311D	4537

CAMP WISDOM ROAD - From FM 1382 to Mountain Creek Pkwy. - PB17VA13

4/6/2023 6:14:14 PM NAME\$ c:\pwworking\l\tr\cong\neer s-dw\01\guarrr\neer s-dw\17VA13-C-PP-09.dgn

PROPOSED INLET TABLE			
ID #, TYPE & SIZE	CL STA, OFFSET OR COORD	TC	FL
C-06, STD 10' REC CI	STA 28+83.00, 33.50' LT	483.00	479.00
C-07, STD 10' REC CI	STA 31+24.66, 39.16' LT	484.24	480.24
C-08, STD 10' CI	STA 28+06.00, 31.50' RT	482.64	476.64
C-09, STD 10' REC CI	STA 31+19.71, 33.50' RT	484.19	476.19

SCALE IN FEET
0 20 40

TOPOGRAPHIC LEGEND
FOR ALL PLAN AND PROFILE SHEETS

- PP POWER POLE
- GUY GUY WIRE
- MHW MANHOLE WATER
- GAS METER
- CLEAN OUT
- LP LIGHT POLE
- WM WATER METER
- WV WATER VALVE
- FH FIRE HYDRANT
- SP SIGN POST
- MB MAIL BOX
- BUSH
- TREE

ROADWAY LEGEND

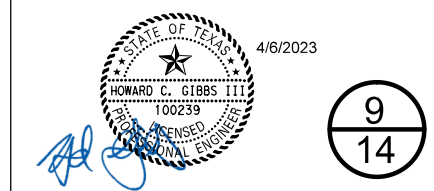
- EXIST. LOT LINE
- EXIST. RIGHT-OF-WAY
- EXIST. CONC. PAVEMENT
- EXIST. STORM SEWER
- PROP. STORM SEWER
- DRAINAGE FLOW ARROW
- PROP. 11" CONC. PAVEMENT (465, 458, 247D)
- PROP. 6" CONC. DRWY OR SHARED USE PATH (531, 457)
- PROP. 4" CONC. SIDEWALK (355, 607A)
- BERMUDA OR ST. AUGUSTINE BLOCK SODDING
- MILLING ASPHALT OVERLAY (NO PAY ITEM)
- PROP. 4" CONC. MEDIAN (356)
- FULL DEPTH SAWCUT (604)
- RETAINING WALL (424A)

- GENERAL NOTES:**
- SEE DEMOLITION SHEETS FOR PAVEMENT REMOVAL LIMITS.
 - TYPICAL DRIVEWAY PAY ITEMS ARE LISTED BELOW:
CONC. (457, 604)
 - END CONCRETE PAVEMENT, MATCH EXISTING ELEVATION AND CONNECT TO EXISTING PAVEMENT WITH #6 DOWEL BARS, 24" LONG @ 12" C.C. BOTH WAYS. (604)
 - REFER TO HORIZONTAL ALIGNMENT DATA SHEET FOR MORE INFORMATION.



UTILITY LOCATION NOTE:
The location of existing utilities shown on these plans are approximate and based on existing plans and data furnished by utility companies. It is the responsibility of the contractor to verify the location and depth of all existing utilities that may conflict with construction. Call 1-800-344-8377 two working days prior to construction for onsite locations. Any damage to existing utilities shall be repaired at contractor's expense, at no additional cost.

BENCHMARKS
BM# 61A-Y-T3
CL CAMP WISDOM RD
Square cut on West end of concrete headwall, North side of Camp Wisdom Rd, 150' West of the centerline of Turnout Ln
ELEV=478.39'
N=6926867.41
E=2438095.11

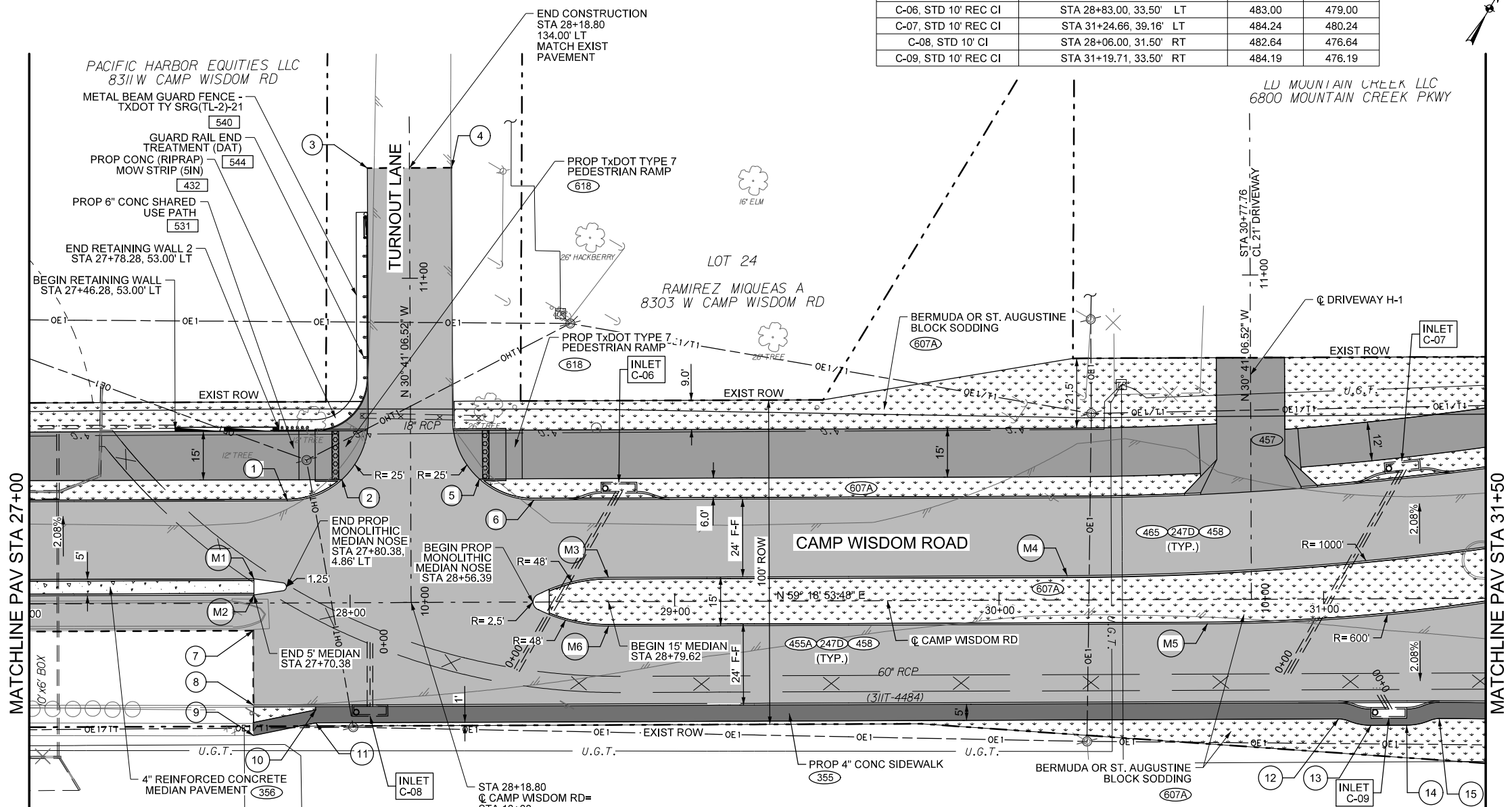


9
14

LTRA Lina T. Ramey & Associates, Inc. 214-979-1144 MAIN
3320 Belt Line Road 214-979-2480 FAX
Farmers Branch, Texas 75234 TBPE Registration No. F-782

PAVING PLAN AND PROFILE
CAMP WISDOM ROAD
FROM FM 1382 TO MOUNTAIN CREEK PKWY
PUBLIC WORKS DEPARTMENT
CITY OF DALLAS, TEXAS

DESIGN	DRAWN	DATE	SCALE	NOTES	FILE	NO.
LTRA	LTRA	APR 2023	1"=40' H	25/114	311D	4537



POINT NO.	PAV. STA.	REMARKS
M1	STA 27+70.38, 7.50' LT	TC = 482.33
M2	STA 27+70.38, 2.50' LT	TC = 482.36
M3	STA 28+79.62, 7.50' LT	TC = 482.95
M4	STA 30+21.00, 7.50' LT	TC = 483.66
M5	STA 30+64.22, 7.50' RT	TC = 483.88
M6	STA 28+79.62, 7.50' RT	TC = 482.96
1	STA 27+80.80, 31.50' LT	TC = 481.89
2	STA 27+97.61, 38.00' LT	TC = 481.35
3	STA 28+05.80, 134.00' LT	TC = 479.24
4	STA 28+31.80, 134.00' LT	TC = 479.72
5	STA 28+40.00, 38.00' LT	TP = 481.72
6	STA 28+56.80, 31.50' LT	TC = 482.33
7	STA 27+70.11, 8.50' RT	TP = 482.38
8	STA 27+70.11, 31.50' RT	TC = 482.45
9	STA 27+70.11, 40.82' LT	TP = 482.60
10	STA 27+89.27, 33.00' RT	TP = 482.55
11	STA 27+89.27, 37.00' RT	TP = 482.63
12	STA 31+04.50, 37.00' RT	TP = 484.18
13	STA 31+14.50, 39.00' RT	TP = 484.58
14	STA 31+25.50, 39.00' RT	TP = 484.64
15	STA 31+35.50, 37.00' RT	TP = 484.34

TC= TOP OF CURB
TP= TOP OF PAVEMENT
NOTE: ALL POINTS AT CURB REFER TO FRONT FACE AT GUTTER

CAMP WISDOM ROAD - From FM 1382 to Mountain Creek Pkwy. - PB17VA13

