



±7,920 SF INDUSTRIAL BUILDINGS
FOR SALE OR LEASE | SOUTH YUBA CROSSING



South Yuba CROSSING



4525 - 4577 SKYWAY DRIVE | OLIVEHURST, CA

COLLIERS:

TOMMY PONDER, SIOR
EXECUTIVE VICE PRESIDENT
+1 916 563 3005
TOMMY.PONDER@COLLIERS.COM
CA LIC. 01431506

GEORGE VRAME, SIOR
VICE PRESIDENT
+1 916 563 3041
GEORGE.VRAME@COLLIERS.COM
CA LIC. 02028936

AZTEC:

TRENT THOMASON
VICE PRESIDENT
+1 530 933 8909
TRENT.THOMASON@TNTCRE.COM
CA LIC. 00929388

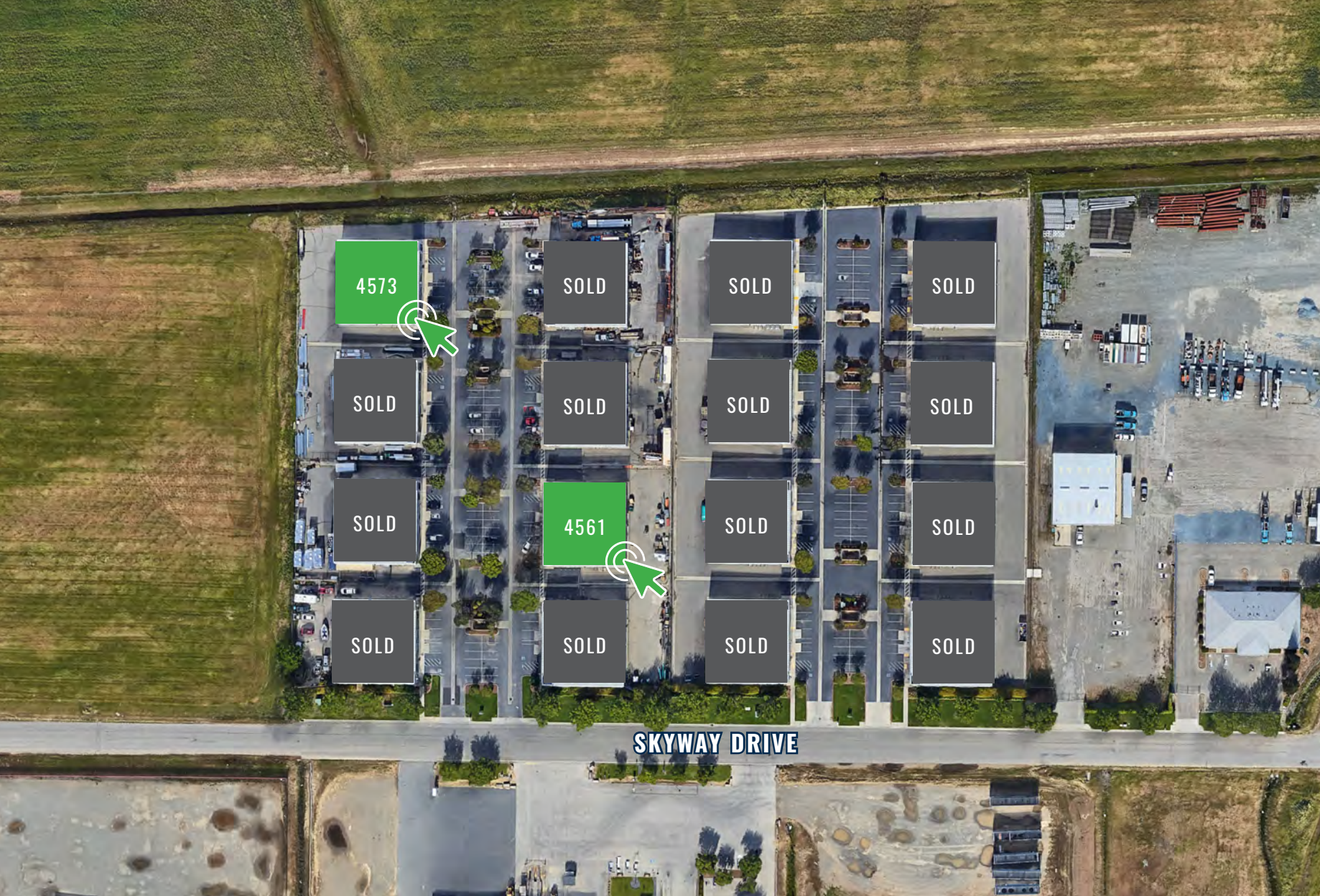


AVAILABLE UNITS

BUILDING SPECIFICATIONS

BUILDING CONDITION	Office, warehouse, with restrooms *4561 in shell condition
CURRENT LEASE STATUS	Variable
CLEAR HEIGHT	18'
ROLL UP DOOR SIZE	10' x 12'
AVAILABLE SF PER UNIT	±7,920
DRIVE THRU CAPABLE	Yes

WATER & SEWER	Olivehurst Public Utilities District (OPUD)
YEAR BUILT	2006
GAS & ELECTRIC SERVICE	PG&E
GROUND LEVEL DOORS	4 per building
FULLY-INSULATED	Yes
ZONING	M-2 Heavy Industrial



CLICK ON EACH AVAILABLE UNIT TO VIEW FLOORPLAN

This document/email has been prepared by Colliers for advertising and general information only. Colliers makes no guarantees, representations or warranties of any kind, expressed or implied, regarding the information including, but not limited to, warranties of content, accuracy and reliability. Any interested party should undertake their own inquiries as to the accuracy of the information. Colliers excludes unequivocally all inferred or implied terms, conditions and warranties arising out of this document and excludes all liability for loss and damages arising there from. This publication is the copyrighted property of Colliers and /or its licensor(s). © 2026. All rights reserved. This communication is not intended to cause or induce breach of an existing listing agreement.



MARKET ACCESS

DRIVE TIMES

SACRAMENTO VIA HWY 70 40 minutes

ROSEVILLE VIA HWY 65 35 minutes

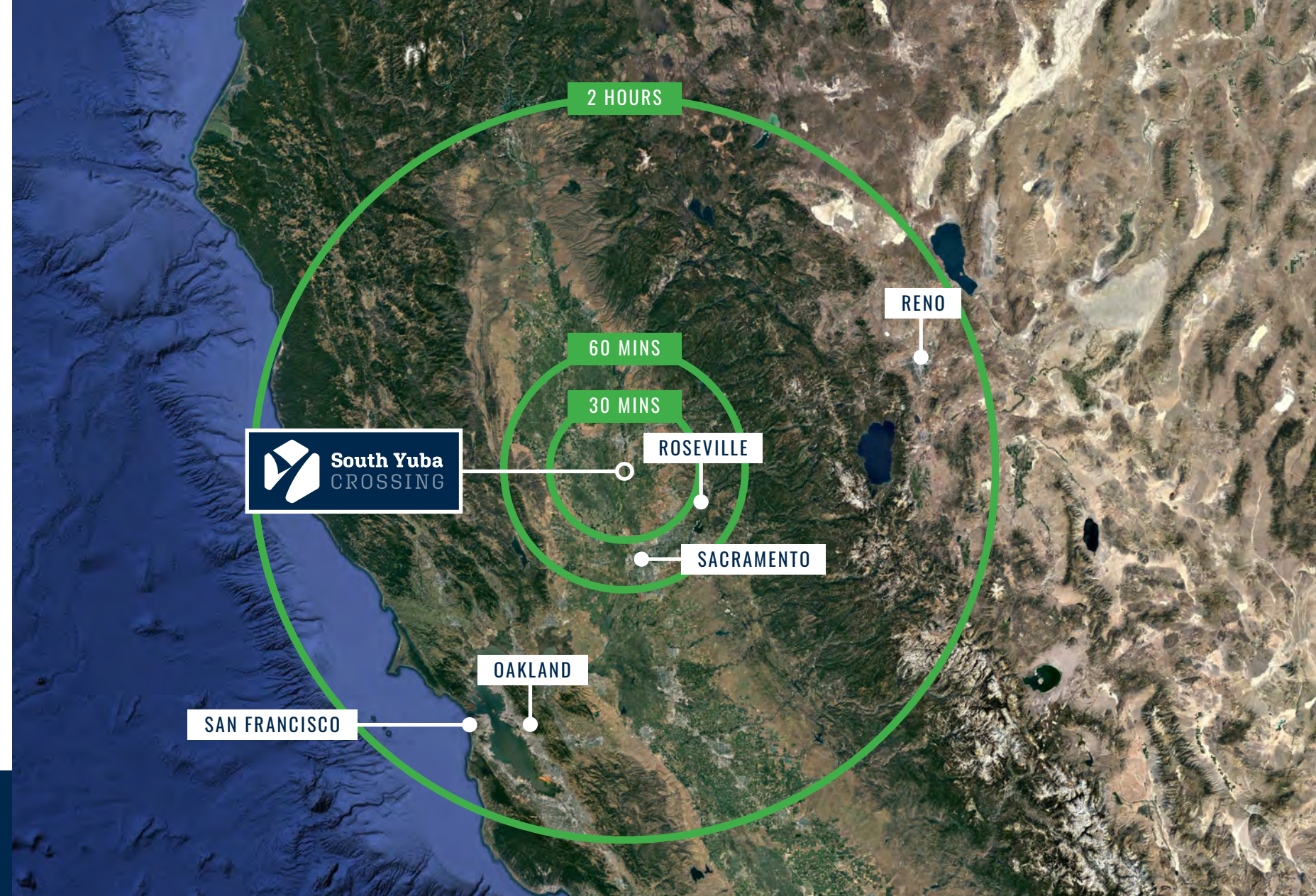
SAN FRANCISCO VIA HWY 80 2 hours

RENO, NV VIA HWY 20 2 hours

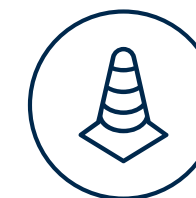
RECENT DEVELOPMENTS

Yuba City makes the investments necessary to support a thriving business. Recent examples:

- CalTrans improvements on State Highway 99 (N-S) and State Highway 20 (E-W)
- Large pool of available labor force
- Redevelopment of Yuba City's downtown Plumas Street into a destination shopping district, establishing Yuba City as a regional hub
- Tax credit incentives for new hires and business development



TAX INCENTIVES



ROADWAY IMPROVEMENT



CONSTRUCTION/DEVELOPMENTS

CENTRAL LOCATION

WITH MAJOR HIGHWAY ACCESSIBILITY



COLLIERS:

TOMMY PONDER, SIOR
EXECUTIVE VICE PRESIDENT
+1 916 563 3005
TOMMY.PONDER@COLLIERS.COM
CA LIC. 01431506

GEORGE VRAME, SIOR
VICE PRESIDENT
+1 916 563 3041
GEORGE.VRAME@COLLIERS.COM
CA LIC. 02028936

AZTEC:

TRENT THOMASON
VICE PRESIDENT
+1 530 933 8909
TRENT.THOMASON@TNTCRE.COM
CA LIC. 00929388

