



MIDWAY BUSINESS PARK

12 Buildings Total | 258,846 SF Total | 2,000-40,000 SF Available

OFFERING SUMMARY

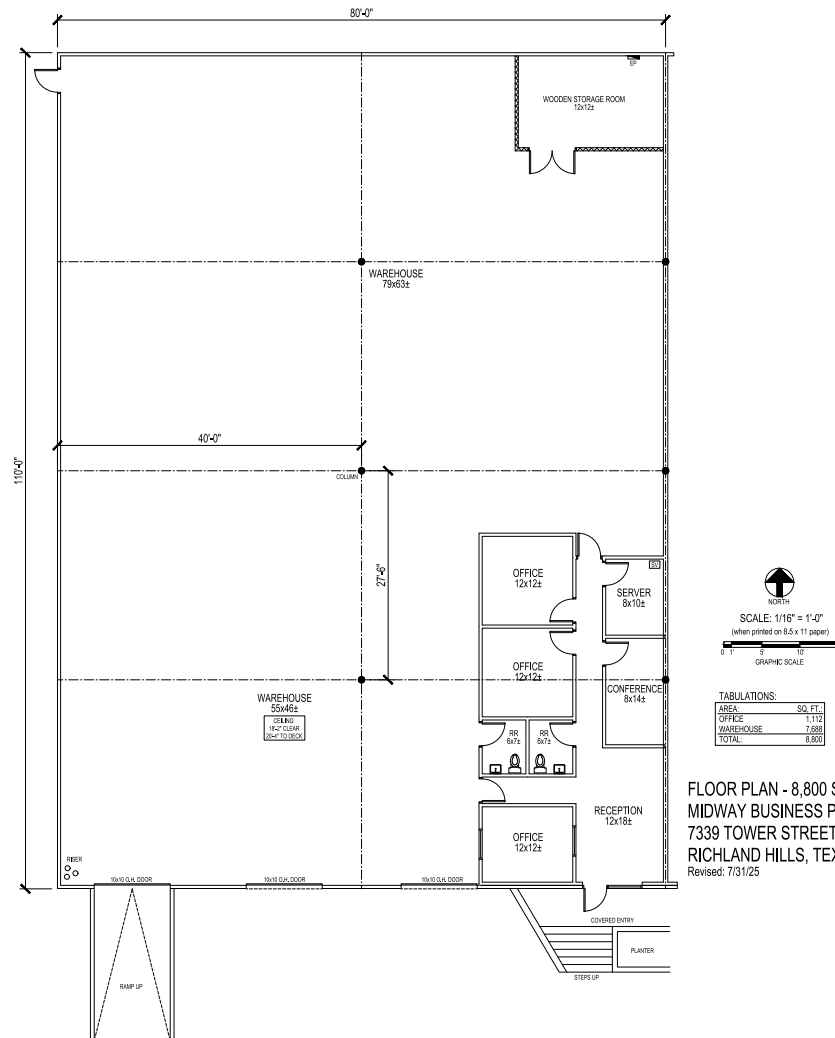
Midway Business Park is a premier industrial development spanning 258,846 square feet across twelve versatile buildings in the heart of Richland Hills, Texas. Strategically located in central Tarrant County, this dynamic business hub offers exceptional freeway visibility and immediate access to major highways, placing tenants just minutes from downtown Fort Worth and DFW International Airport. Surrounded by a robust and diverse labor pool, Midway Business Park is designed to accommodate a wide range of tenant needs, with flexible suite sizes from 2,000 to 40,000 square feet. Whether you're a growing business or an established enterprise, Midway Business Park delivers the accessibility, visibility, and workforce proximity essential for success.

Owned by:

Ackerman & Co.

Leased by:

HPI



HIGHLIGHTS

8,800 Total SF

7,688 SF Warehouse

1,112 SF Office

18' Clear Height

Two (2) 10x10 Dock Level Doors

One (1) 10x10 Grade Level
Door (Ramp)

+/- 2,500 SF of Fenced Outdoor Storage

Prime Location with Close Proximity to Highway 121, Loop 820, and I-35W



FOR LEASE

MBP | MIDWAY BUSINESS PARK



FOR LEASE

MBP | MIDWAY BUSINESS PARK

