

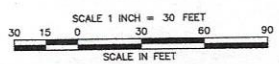
DESCRIPTION

PARTIAL BOUNDARY SURVEY MARKING THE SOUTH LINE OF LOT 20 IN SWENSON'S INDUSTRIAL ADDITION, A SUBDIVISION IN THE CITY OF KANSAS CITY, JACKSON COUNTY, MISSOURI.

NOTES

1. PORTIONS OF THE BOUNDARY CONTROLLING INFORMATION SHOWN ON THIS SURVEY ARE FROM PREVIOUS SURVEYS BY THIS COMPANY.
2. * INDICATES A 1/2" STEEL PIN WITH PLASTIC ID CAP STAMPED "ASC KLS 3 MLS 780" SET ON PROPERTY CORNER.

THE BEARINGS SHOWN HEREON ARE BASED ON THE PLAT OF "SWENSON'S INDUSTRIAL ADDITION"



DATE	REVISION	BY

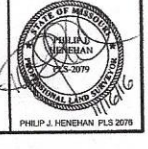
BOUNDARY SURVEY

THIS IS TO CERTIFY THAT THIS SURVEY WAS EXECUTED IN ACCORDANCE WITH THE CURRENT MINIMUM STANDARDS FOR PROPERTY BOUNDARY SURVEYS AS ESTABLISHED BY THE MISSOURI BOARD FOR ARCHITECTS, PROFESSIONAL ENGINEERS, PROFESSIONAL LAND SURVEYORS AND LANDSCAPE ARCHITECTS AND MEETS OR EXCEEDS THE ACCURACY REQUIREMENTS OF A TYPE URBAN SURVEY.

P.J.H.	DRN.
X	CKD.
MED II	P.C.
X	APP.

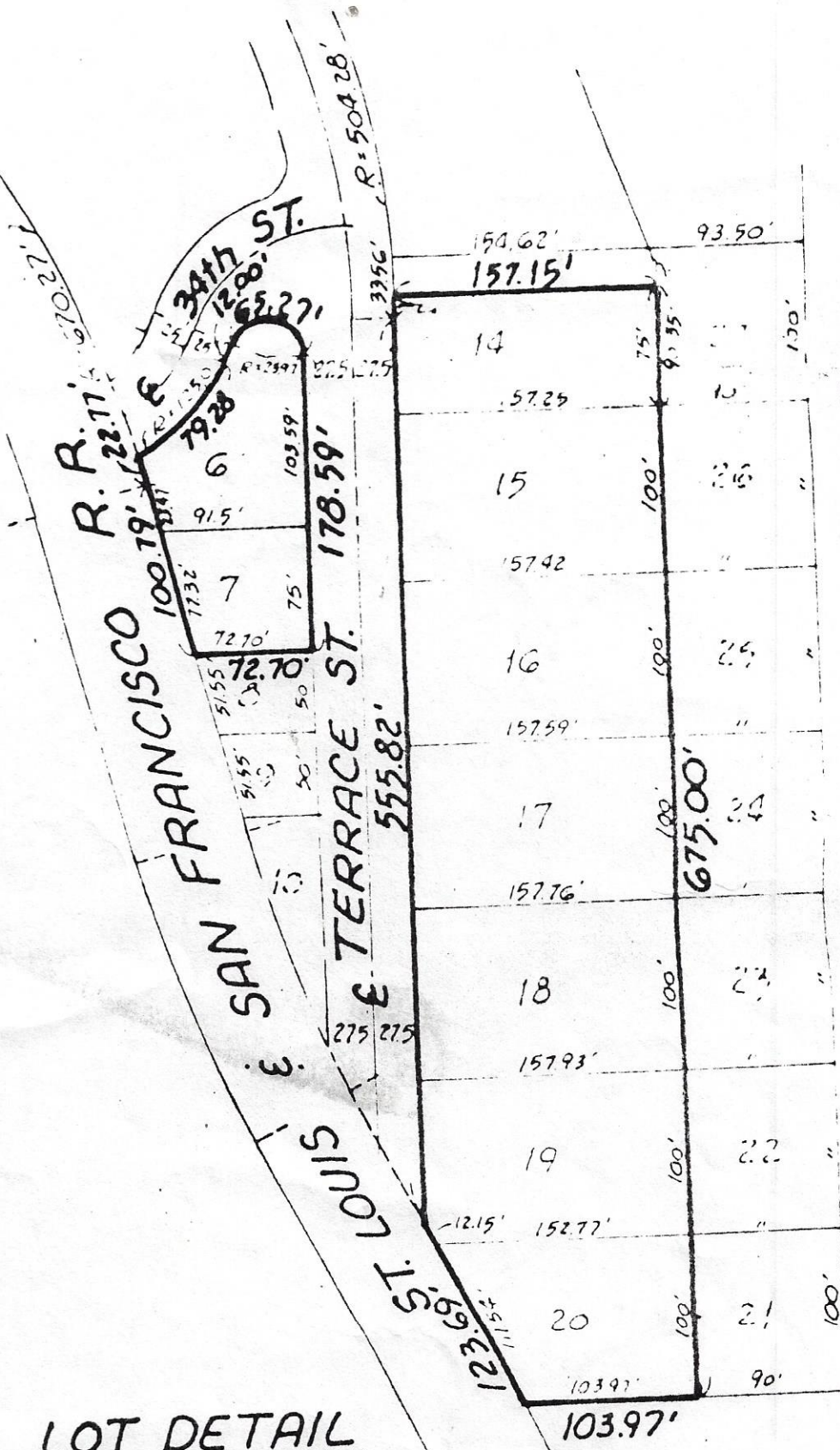
DATE: NOVEMBER 10, 2016
 FOR: JENNINGS PLAZA PROPERTIES
 4517 BELL
 KANSAS CITY, MISSOURI 64111
 ATTN: JULIE JENNINGS

ANDERSON
 SURVEY COMPANY
 203 N. W. EXECUTIVE WAY
 LEE'S SUMMIT, MISSOURI 64063
 (816) 249-5050
 MISSOURI STATE CERTIFICATE OF AUTHORITY, 000076



18-49-33
 16-10-41999-1
 41090eys.dwg
 Certificate

PHILIP J. HENDMAN PLS 2079



LOT DETAIL
SCALE: 1" = 100'

HOLLY STREET