



For Lease Industrial Flex Space in Des Moines

Up to +/- 6,000 SF Flex Space

Property details

Available space:	+/- 6,000 SF
Lease rate:	\$7.50 SF/NNN
Estimated OPEX:	\$3.14 PSF
Location:	5.4 Miles from I-235 Exit in Des Moines; 2.1 miles (8 min.) away from Des Moines Int'l Airport
Property Information:	Docks: 1 Drive-ins: 1 Clear Height: 20' Building is fully sprinkled

5034 Park Avenue
Building #4
Des Moines, IA 50321

Austin Hedstrom
Executive Vice President
+1 515 414 1767
austin.hedstrom@jll.com

Tanner Hedstrom
Vice President
+1 515 745 2734
tanner.hedstrom@jll.com

jll.com/des-moines

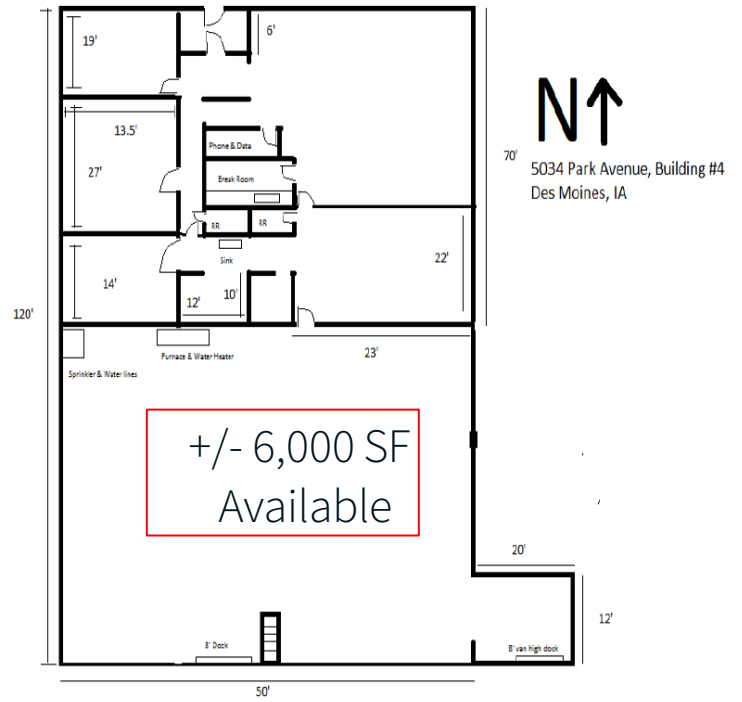


Floor plan

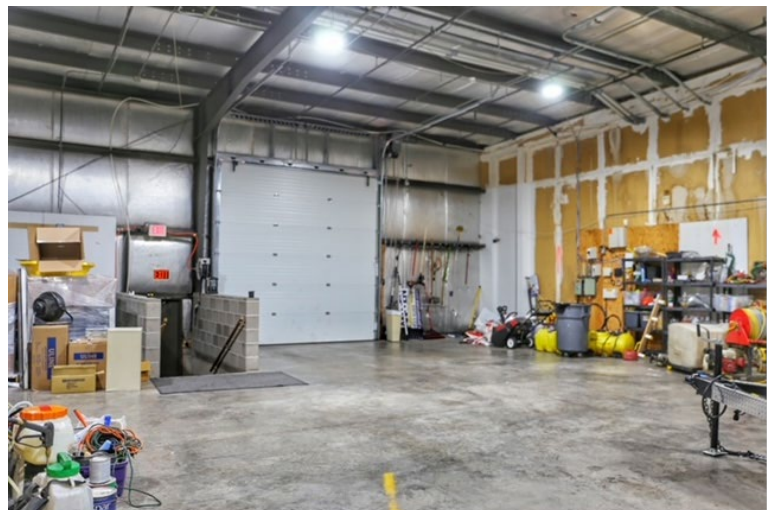
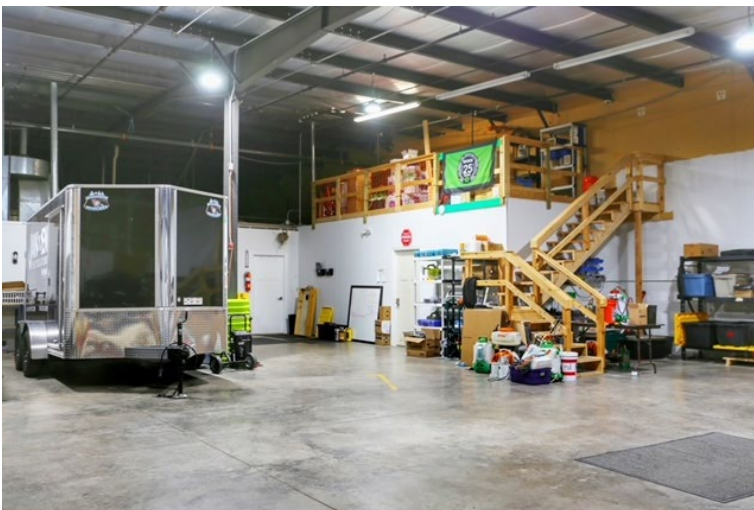
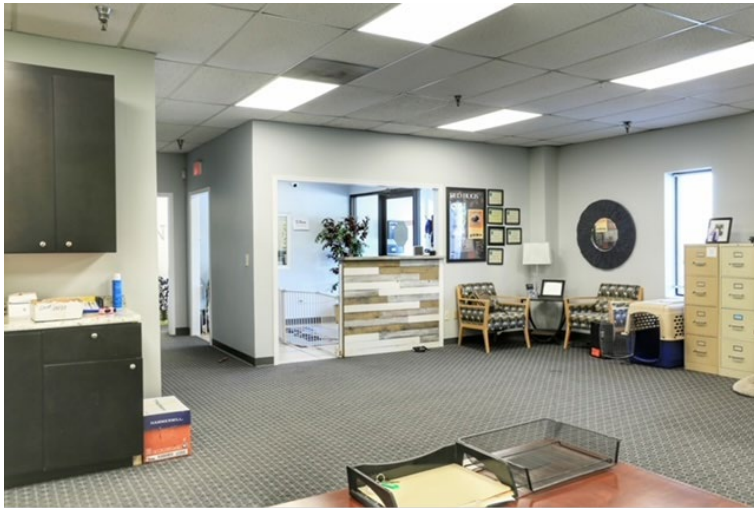
Availability: +/- 6,000 SF
Lease Rate: \$7.50/SF NNN
Estimated OPEX: \$3.14 PSF
Total Building SF: 32,400 SF

Property Information:

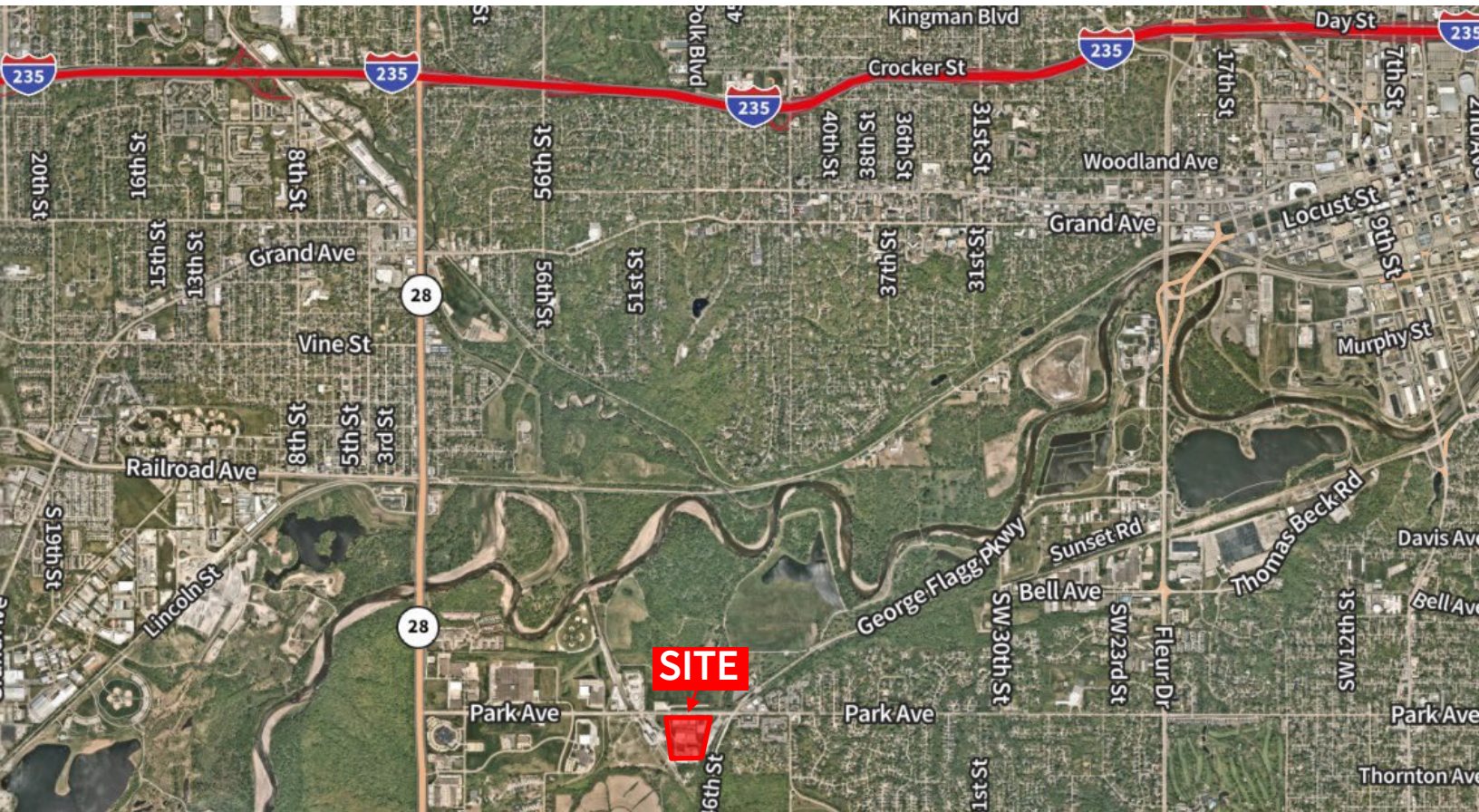
- Docks: 1
- Drive-ins: 1
- Clear Height: 20'
- Building is fully sprinkled



Property photos



Location map



JLL contacts

Austin Hedstrom
Executive Vice President
+1 515 414 1767
austin.hedstrom@jll.com

Tanner Hedstrom
Vice President
+1 515 745 2734
tanner.hedstrom@jll.com

Marcus R. Pitts, CCIM, SIOR
Senior Managing Director
+1 515 556 4727
marcus.pitts@jll.com

jll.com/des-moines



Jones Lang LaSalle Americas, Inc., a licensed real estate broker in 48 states

DISCLAIMER Although information has been obtained from sources deemed reliable, neither Owner nor JLL makes any guarantees, warranties or representations, express or implied, as to the completeness or accuracy as to the information contained herein. Any projections, opinions, assumptions or estimates used are for example only. There may be differences between projected and actual results, and those differences may be material. The Property may be withdrawn without notice. Neither Owner nor JLL accepts any liability for any loss or damage suffered by any party resulting from reliance on this information. If the recipient of this information has signed a confidentiality agreement regarding this matter, this information is subject to the terms of that agreement. ©2025. Jones Lang LaSalle IP, Inc. All rights reserved.