

FOR LEASE

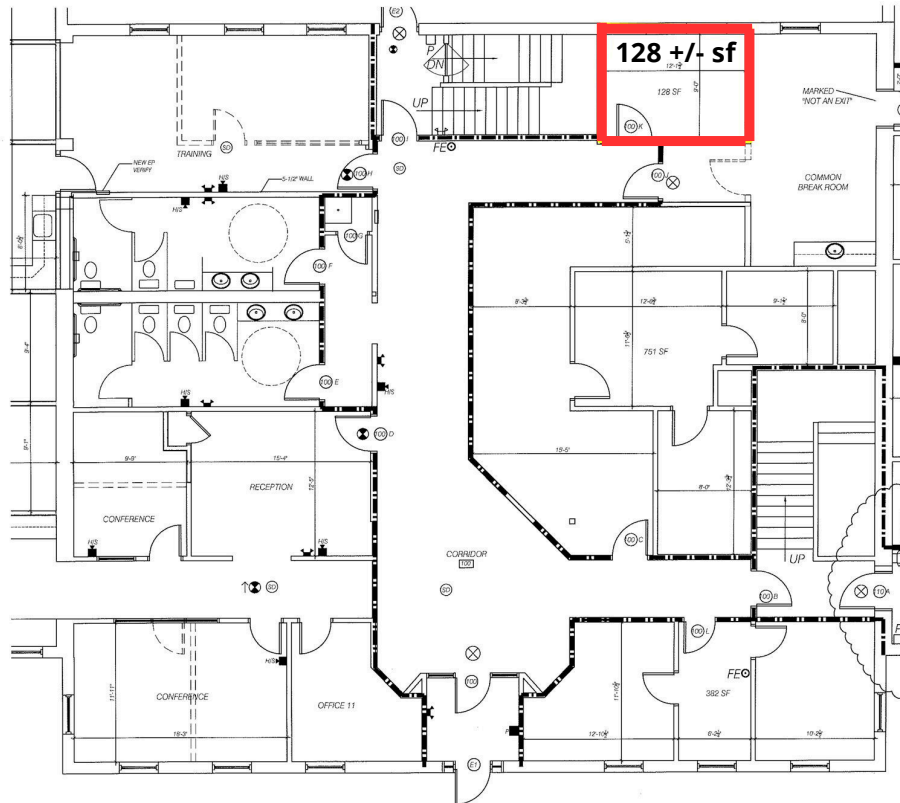


74 GILMAN RD, BANGOR, ME

PROPERTY DESCRIPTION	Freestanding, masonry Class A office building with generous on-site parking. Second floor space offers open layout with perimeter offices with windows and ample natural light. Wheelchair lift being installed to make 2 nd floor accessible.
LOCATION	Conveniently located off Stillwater Ave, adjacent to Home Depot. Less than ¼ mile from the I-95 Stillwater interchange.
SPACE AVAILABLE	First floor: 128 +/- sf Second floor: 4,582 +/- sf Total: 4,710 +/- sf
RESTROOMS	First floor: common multi-stall Second floor: 1 single user; 1 multi-stall
ZONING	Shopping & Personal Service (S&PS)
PARKING	81 paved spaces
LEASE PRICE	\$13.00/sf plus electric

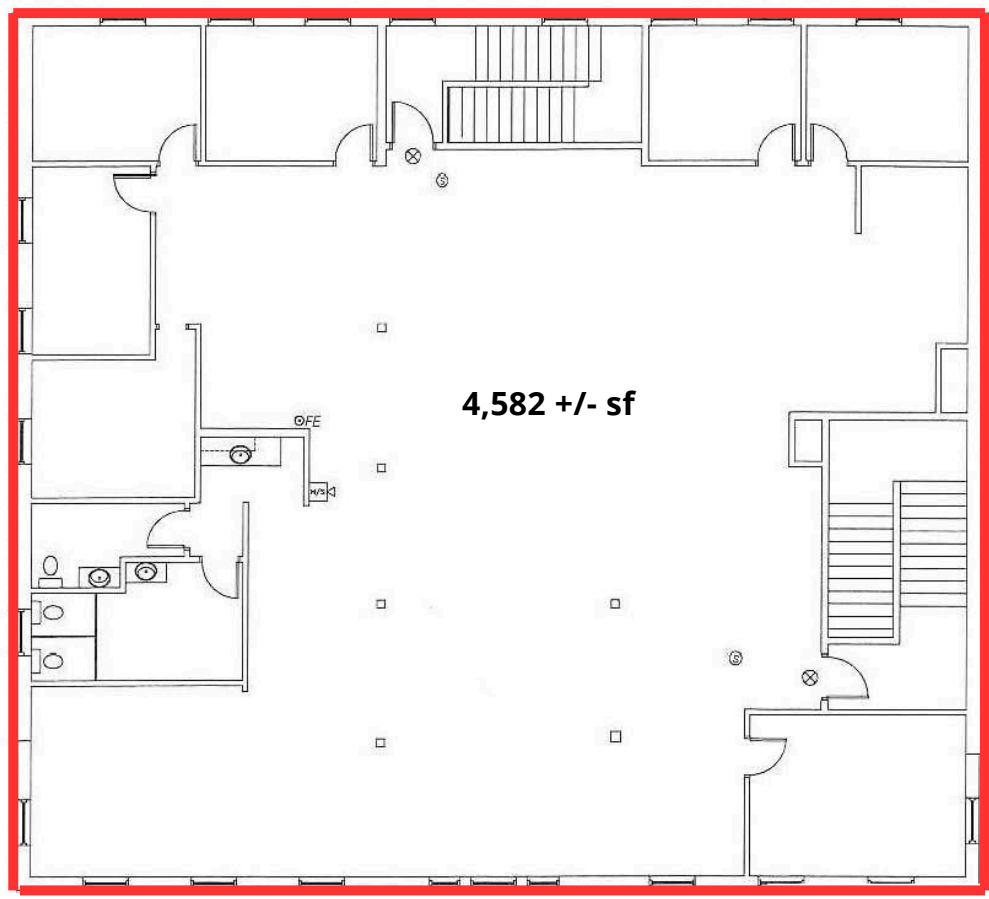
Information furnished is from sources deemed reliable, but no warranty is made to the accuracy thereof. The listing broker hereby discloses that she/he is acting solely as an agent for the seller in the marketing, negotiation, and sale/lease of this property. Broker further discloses that she/he represents the seller's interest and has a fiduciary duty to disclose to the seller information which is material to the sale acquired from the buyer or any other source.

SPACE AVAILABLE - 4,710 +/-SF



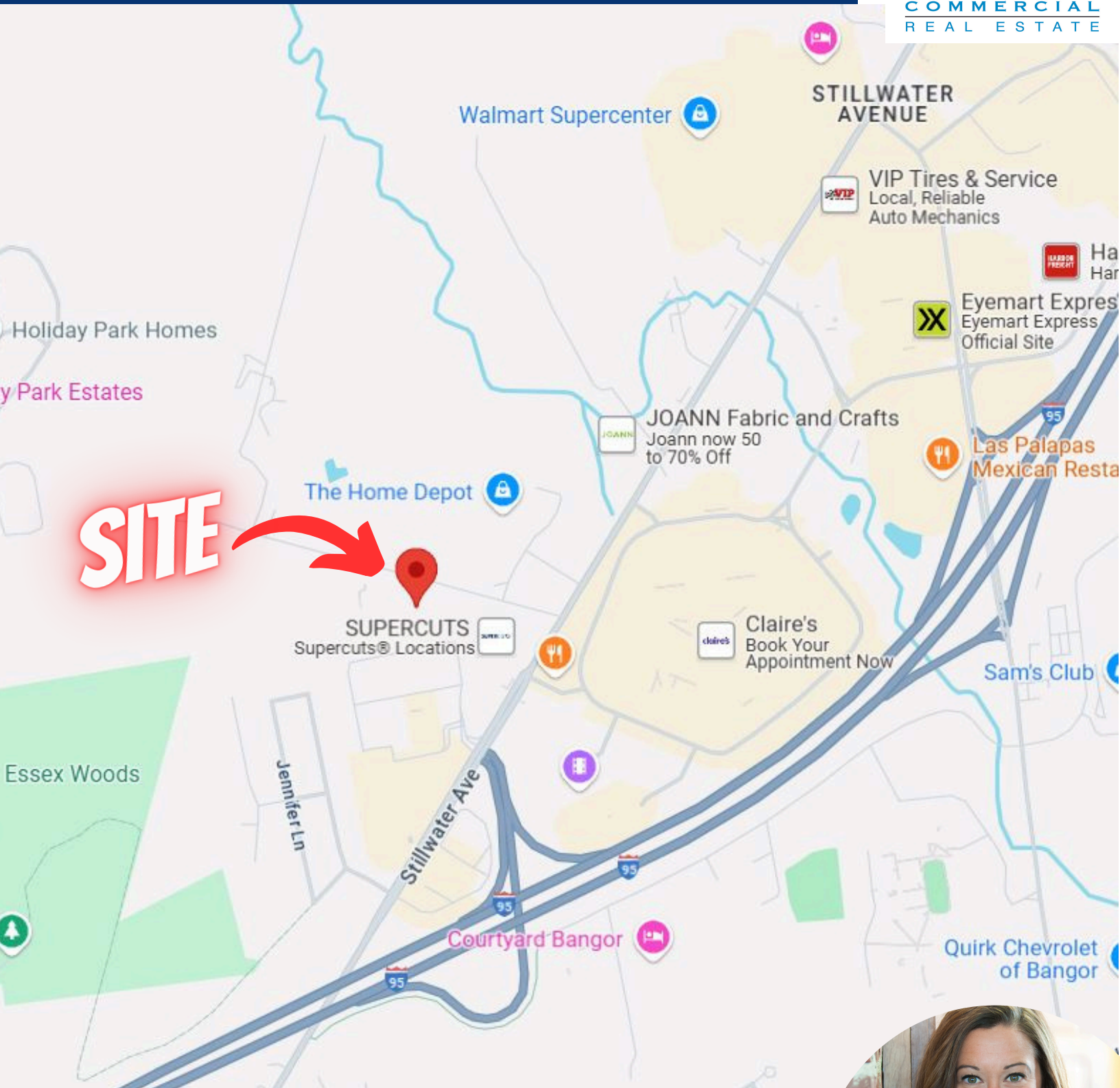
Floor Plan - First Floor

TOTAL SF: 8480



Floor Plan - Second Floor

LOCATION MAP



FOR FURTHER INFO, CONTACT: MOLLY BRIGGS

 molly@epsteincommercial.com

 epsteincommercial.com

 207-945-6222

