

Development Opportunity - Convenient Access to SR-8



Wyoga Lake Rd. - North Parcel Cuyahoga Falls, OH 44224



**SUMMIT
COUNTY**

Development Opportunity

- Situated Near the Wyoga Lake Rd. / E. Steels Corners Rd. Intersection
- Currently Zoned MU-3
- Water available, Sewer at E. Steels Corners Rd.
- Convenient Access to SR-8
- Parcel is approximately 112' x 665'

Quick Look

TOTAL ACRES	1.71
ZONED	MU-3
PRICE	\$215,000
TAXES	\$1097.04/year (2023)
FRONTAGE	112' on Wyoga Lake Rd.
DEPTH	665'
PARCEL	3500316

David Whyte

330 352 7746

dwhyte@naipvc.com

Karen Whyte

330 351 1757

kwhyte@naipvc.com

NO WARRANTY OR REPRESENTATION, EXPRESS OR IMPLIED, IS MADE AS TO THE ACCURACY OF THE INFORMATION CONTAINED HEREIN, AND THE SAME IS SUBMITTED SUBJECT TO ERRORS, OMISSIONS, CHANGE OF PRICE, RENTAL OR OTHER CONDITIONS, PRIOR SALE, LEASE OR FINANCING, OR WITHDRAWAL WITHOUT NOTICE, AND OF ANY SPECIAL LISTING CONDITIONS IMPOSED BY OUR PRINCIPALS NO WARRANTIES OR REPRESENTATIONS ARE MADE AS TO THE CONDITION OF THE PROPERTY OR ANY HAZARDS CONTAINED THEREIN ARE ANY TO BE IMPLIED.

540 White Pond Drive | Suite A

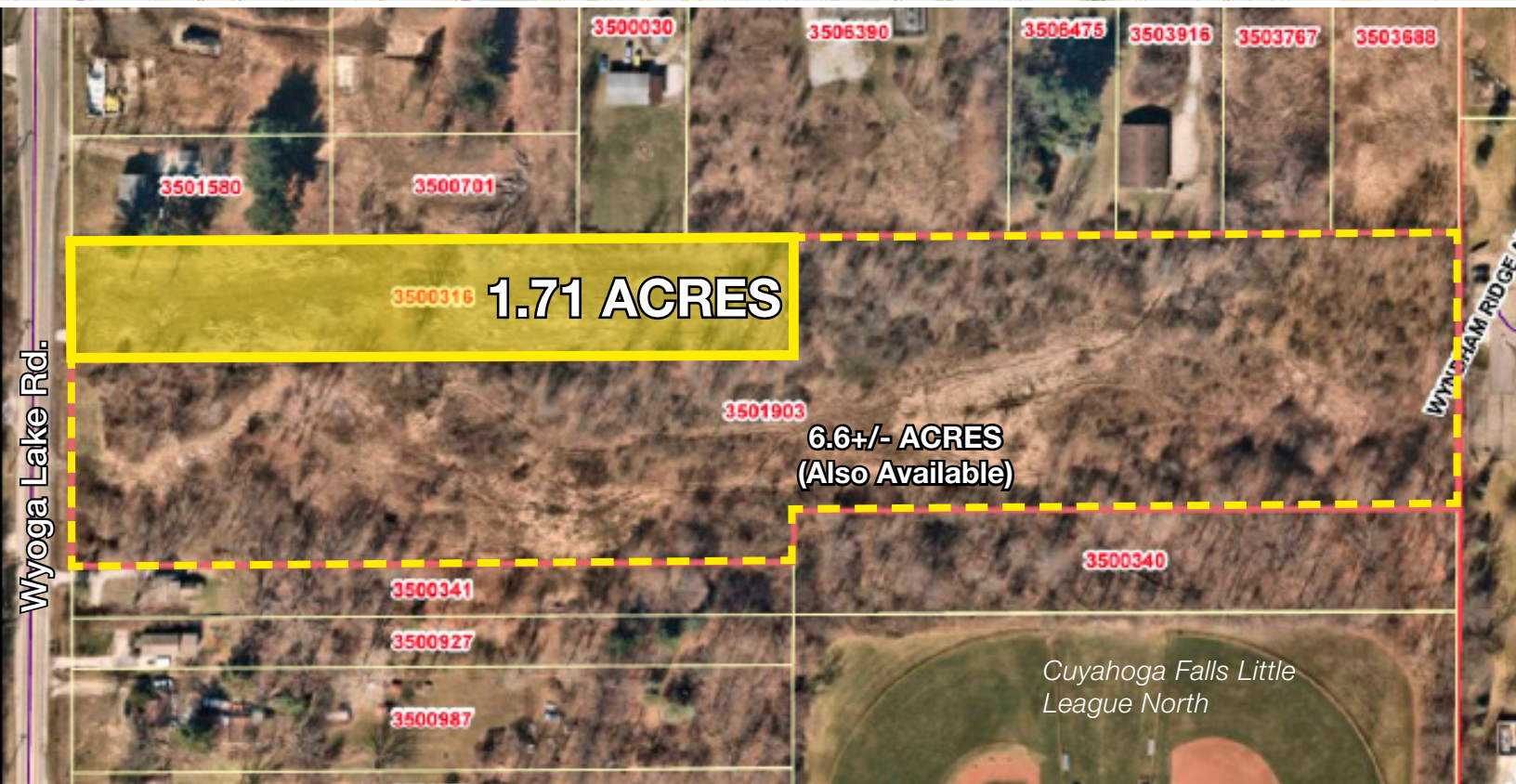
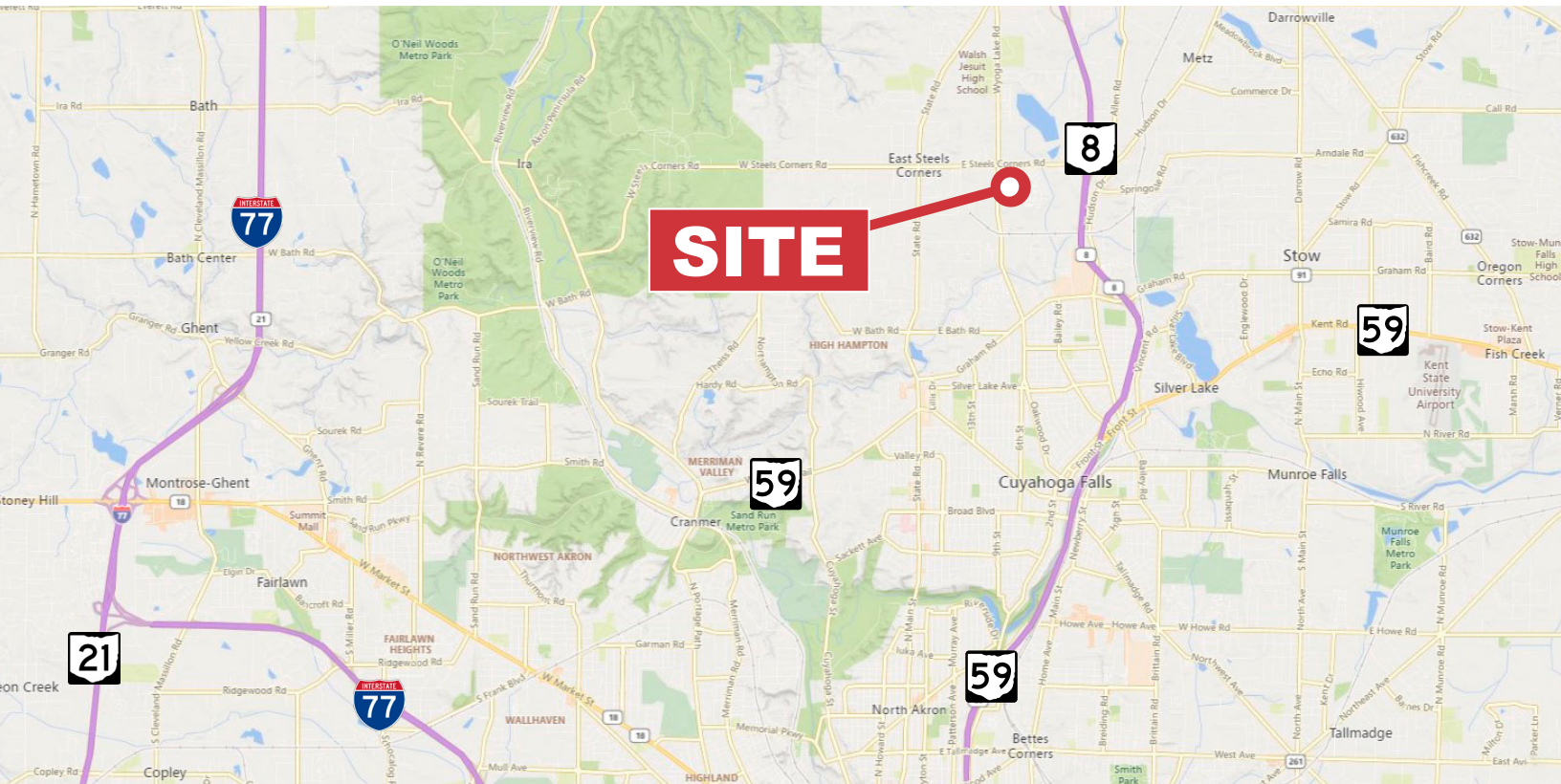
Akron, Ohio, 44320

+1 330 535 2661

naipvc.com

Wyoga Lake Rd. - North Parcel Cuyahoga Falls, OH 44224

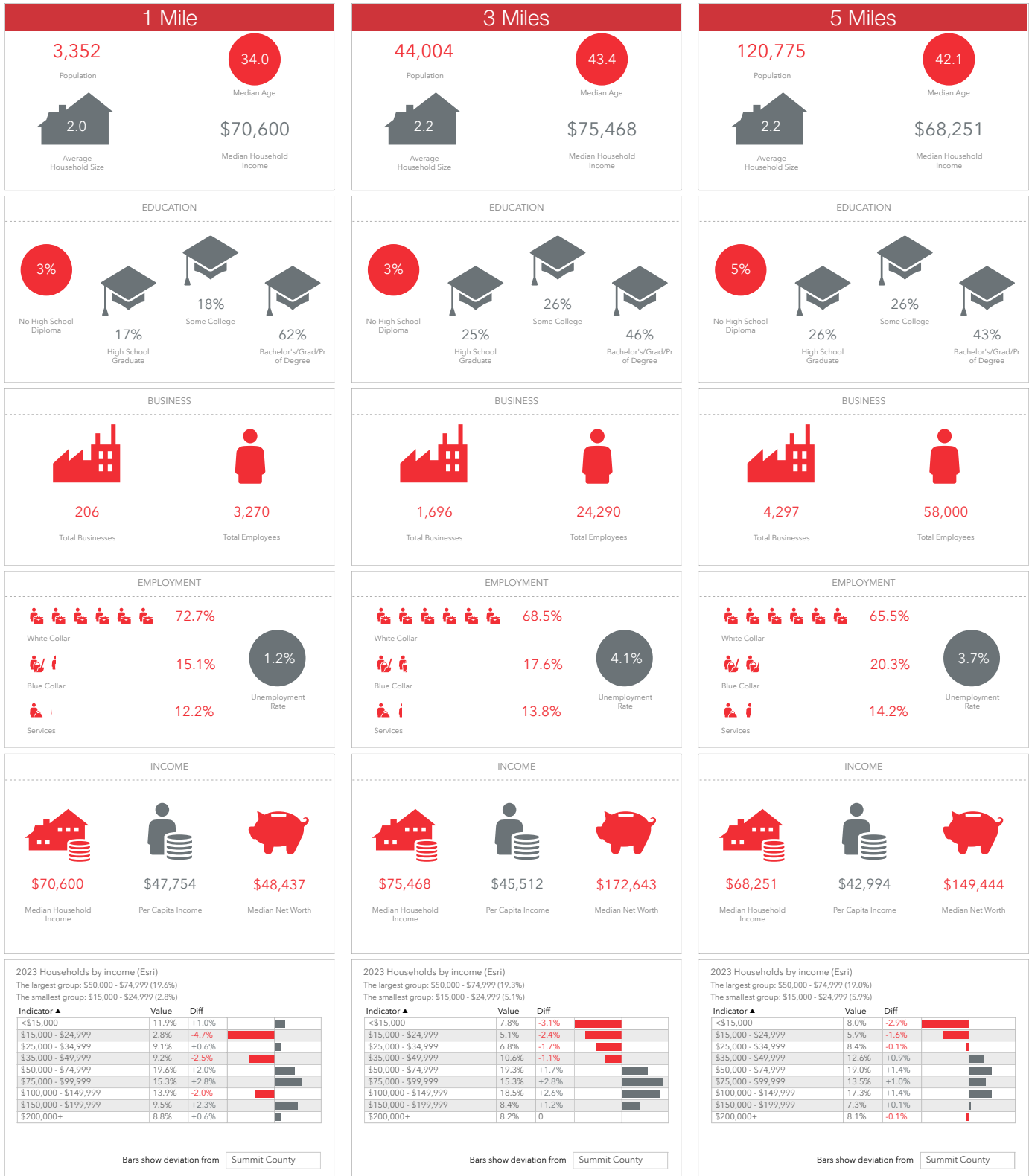
FOR SALE



Wyoga Lake Rd. - North Parcel

Cuyahoga Falls, OH 44224

FOR SALE



David Whyte
330 352 7746
dwhyte@naipvc.com

Karen Whyte
330 351 1757
kwhyte@naipvc.com

NAIPleasant Valley
COMMERCIAL REAL ESTATE SERVICES, WORLDWIDE

540 White Pond Drive | Suite A
Akron, Ohio, 44320
+1 330 535 2661
naipvc.com

Wyoga Lake Rd. - North Parcel
Cuyahoga Falls, OH 44224

FOR SALE

Property Details

ACRES: 1.71

ZONING: MU-3 - Suburban Center (Retail, office, and some service uses, single family and multifamily uses)

UTILITIES: Water available, Sewer at E. Steels Corners Rd.

Price Details

SALE PRICE: \$215,000

TAXES: \$1097.04/year (2023)

Location Details

INTERCHANGE: SR-8

DISTANCE: 1 mile

Demographics	1 Mile	3 Miles	5 Miles
Population:	3,352	44,004	120,775
Households:	1,633	19,271	53,075
Median Age:	34	43.4	42.1
Average HH Income:	\$116,309	\$117,858	\$112,800
Traffic Count:	5,532 VPD on Wyoga Lake Rd 13,406 VPD on E Steels Corners Rd		

David Whyte
330 352 7746
dwhyte@naipvc.com

Karen Whyte
330 351 1757
kwhyte@naipvc.com