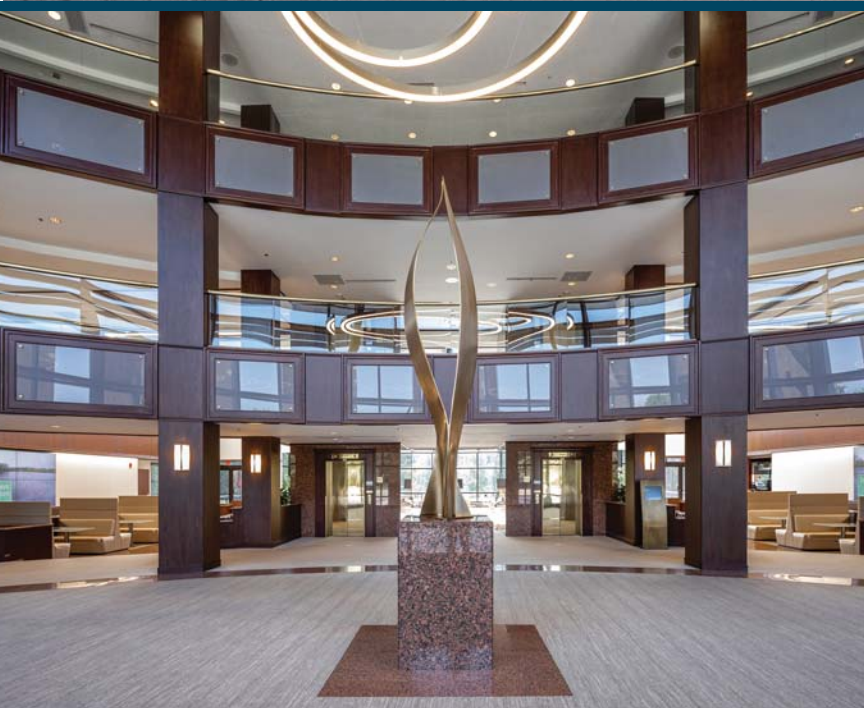


# 300 Tice Boulevard

Woodcliff Lake, N.J.



The Arlington Group

331 Newman Springs Road, Bldg I, Suite 143  
Red Bank, New Jersey 07701

RICK HEILMANN, SIOR

[rick@arlingtongrouprealestate.com](mailto:rick@arlingtongrouprealestate.com)

732-735-7284



# 300 Tice Boulevard

Woodcliff Lake, N.J.

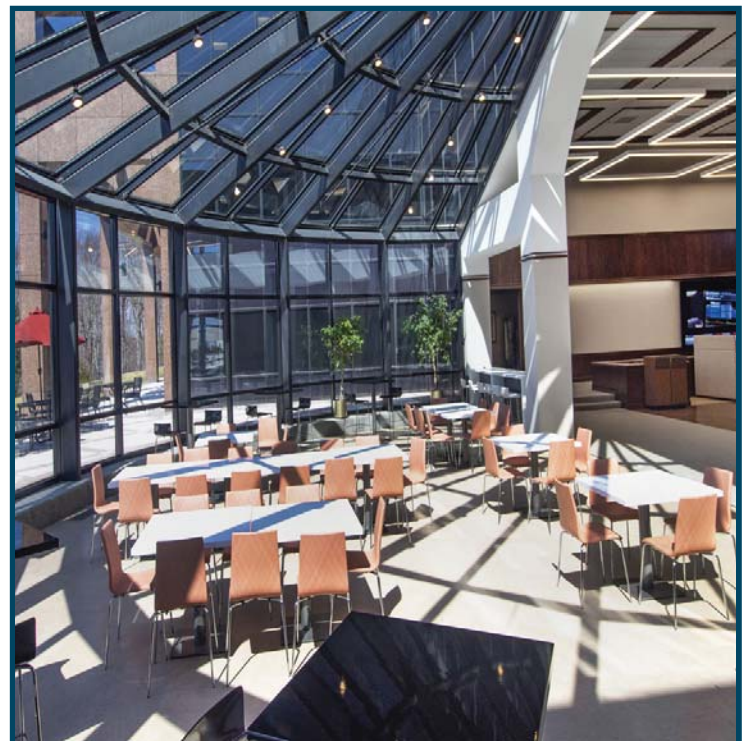
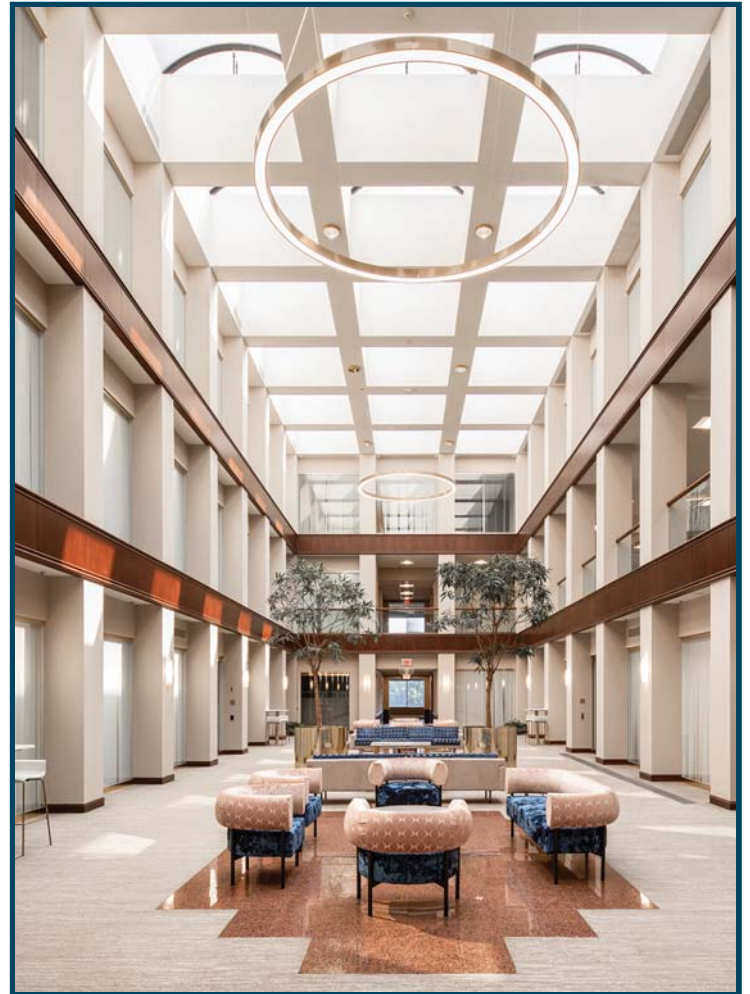




# PROPERTY INFORMATION

**300 Tice Boulevard**  
Woodcliff Lake, N.J.

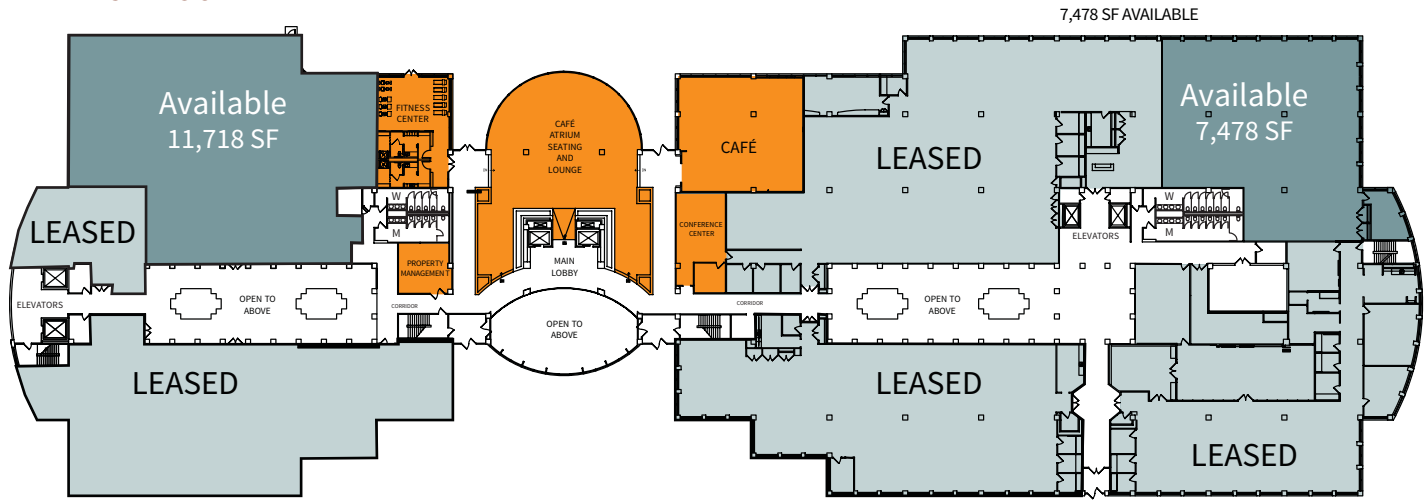
- 240,000 SF Class A, three story building
- 20 acre campus
- Ownership, property management and day porter on site
- 4/1000 parking ratio with covered, reserved parking available
- Full service cafeteria with atrium and outdoor patio seating
- Capital improvements underway including restrooms, common areas, landscaping and parking lot
- Fiber optic connectivity available from multiple telecom providers
- Adjacent to the Woodcliff Lake Hilton and walking distance to Tice's Corner Marketplace
- 1 Mile from Garden State Parkway Exits 171 & 172, 5 minutes from Route 17
- Close proximity to I-287, NY State Thruway, Palisades Interstate Parkway and Westchester County (NY)
- 5 to 10 minutes from 3 NJ transit train stations with service to Secaucus Junction / Hoboken / Penn Station NYC



# AVAILABLE SPACE

**300 Tice Boulevard**  
Woodcliff Lake, N.J.

## FIRST FLOOR



### 11,718 SF

### 7,478 SF

