

188 MAIN STREET + 9 STATE CIRCLE ANNAPOLIS, MARYLAND

Office Suites for Lease in a Landmark Location



188 MAIN STREET + 9 STATE CIRCLE

Office Suites for Lease in a Landmark Location

Located on Main Street and State Circle directly across from the Maryland State House, 188 Main Street/9 State Circle is a rare and highly sought-after property. The building features diverse retail storefronts, restaurants, and professional office suites, with access from both Main Street and State Circle. With nearly 60 feet of direct frontage, this property receives visibility and foot traffic from the 4 million annual visitors to downtown Annapolis.

360° VIRTUAL TOURS

SUITE 200

SUITE 302

SUITE LL2



THOMAS PARK COMMERCIAL



MASON POPHAM

mason.popham@thomas-park.com

410-280-0220



SUITE 200

1,654 SF

 **VIRTUAL TOUR**

SUITE 200





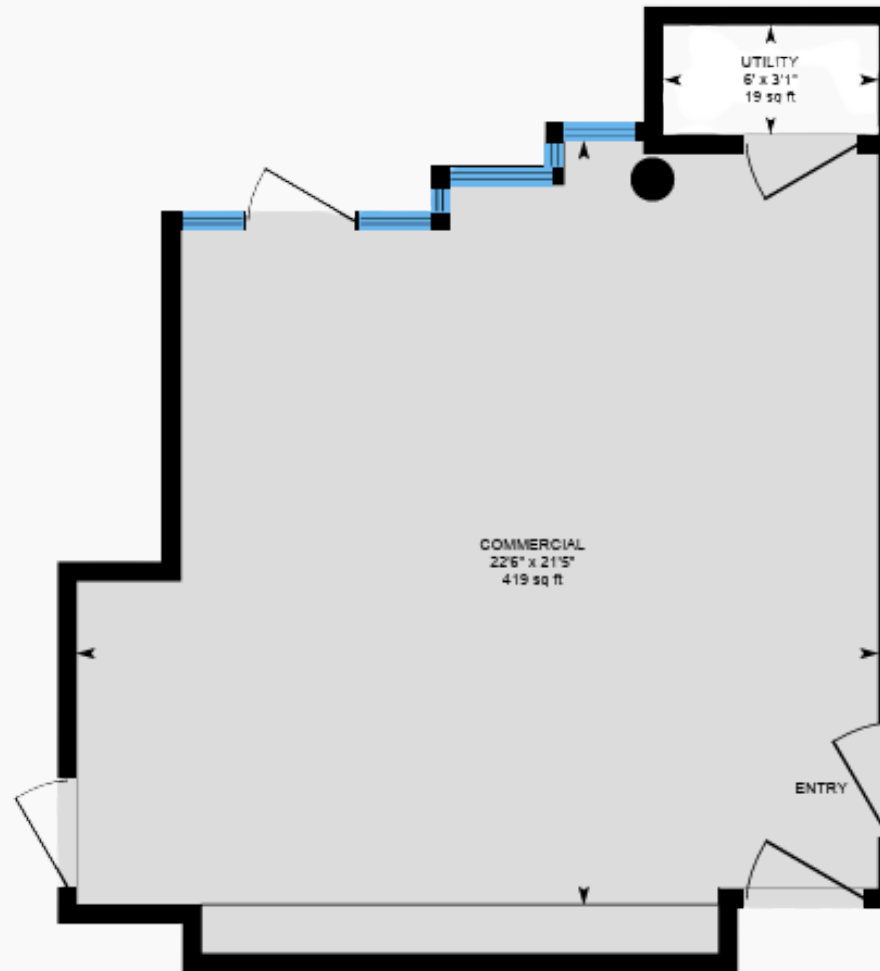
SUITE 302

1,642 SF

 **VIRTUAL TOURS**

SUITE 302





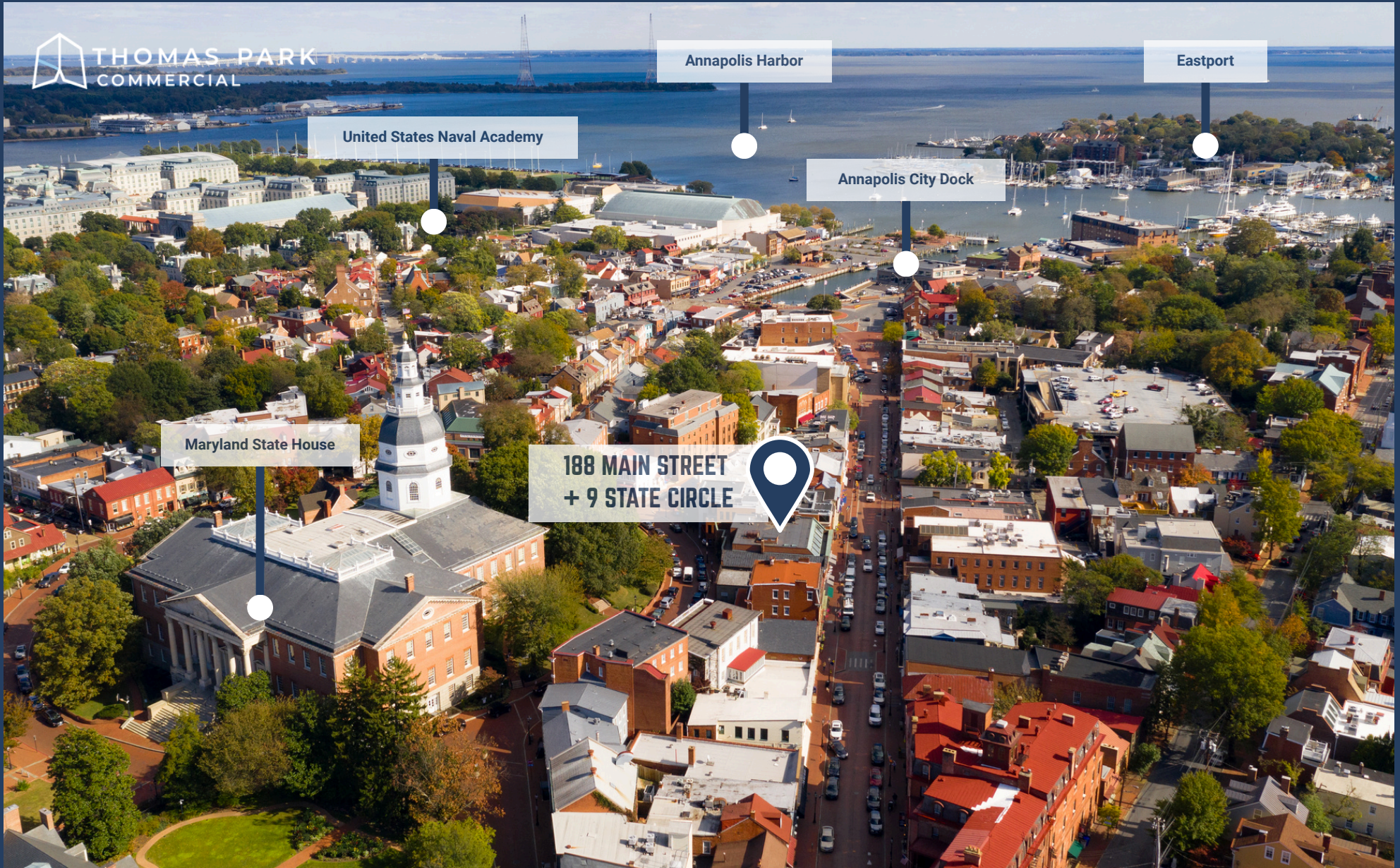
SUITE LL2

565 SF

 **VIRTUAL TOURS**

SUITE LL2





188 MAIN STREET + 9 STATE CIRCLE

Office Suites for Lease in a Landmark Location

360° VIRTUAL TOURS

SUITE 200

SUITE 302

SUITE LL2





YOUR COMMERCIAL REAL ESTATE PARTNER

Thomas Park is a full-service commercial real estate firm offering alternative investment strategies and third-party commercial real estate services.



MASON POPHAM

mason.popham@thomas-park.com

www.thomas-park.com

410-280-0220



THOMAS PARK COMMERCIAL

Thomas Park Commercial specializes in leasing and investment brokerage across all commercial asset classes throughout Maryland.



THOMAS PARK INVESTMENTS

TPI is one of the fastest growing private equity real estate investment firms on the East Coast focused exclusively on healthcare real estate.



THOMAS PARK MANAGEMENT

TPM is a best in class property management firm with a 30+ year track record in the commercial real estate industry.



THOMAS PARK DESIGN

TPD is an innovative interior design firm specializing in healthcare, medical office, commercial office, and retail.



THOMAS PARK CONSTRUCTION

TPC focuses on commercial construction within the healthcare, retail, office and industrial sectors.