



POINT NASA SHOPPING CENTER

1020 W NASA RD 1 - WEBSTER, TEXAS 77598



POINT NASA

LOCATION

LOCATED AT THE NEQ OF INTERSTATE 45 & W NASA ROAD 1 IN WEBSTER, TEXAS

SPACE AVAILABLE

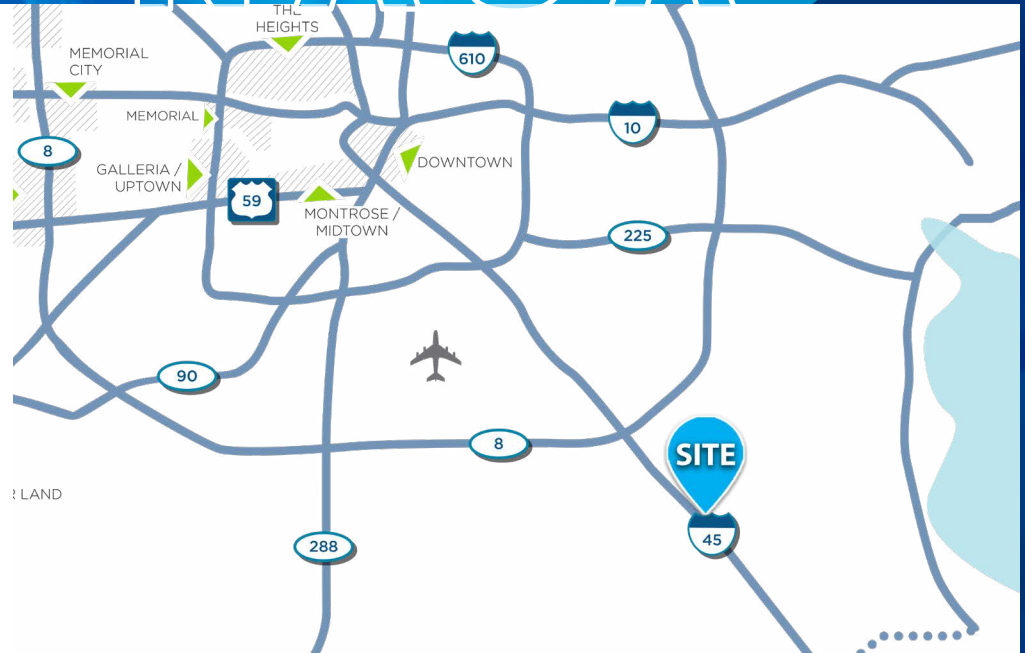
- SPACE 1: 47,900 SF (FORMER CONN'S HOME PLUS)
- SPACE 11: 1,440 SF
- SPACE 13: 3,131 SF
- SPACE 14: 24,444 SF (FORMER DINE-IN THEATER)
- SPACE 15: 3,949 SF (FORMER GYM SPACE)
- SPACE 18: 6,802 SF (2ND GEN RESTAURANT)

TRAFFIC COUNTS (TXDOT 2019)

- 170,646 VPD ON INTERSTATE 45
- 22,196 VPD ON W NASA ROAD 1

PROPERTY INFORMATION

Point Nasa Shopping Center is in a regional location with high traffic counts and exposure to I-45, a major thoroughfare. Serving Webster, Clear Lake & Friendswood with small shop and anchor spaces is available. Current national tenants include Harbor Freight Tools, Guitar Center and Chili's.



2021 DEMOGRAPHIC SNAPSHOT



5353 W ALABAMA ST.,
SUITE 200
HOUSTON, TEXAS 77056



Population

1 mile	3,914
3 mile	84,941
5 mile	201,669



Daytime Population

1 mile	10,912
3 mile	91,089
5 mile	200,074

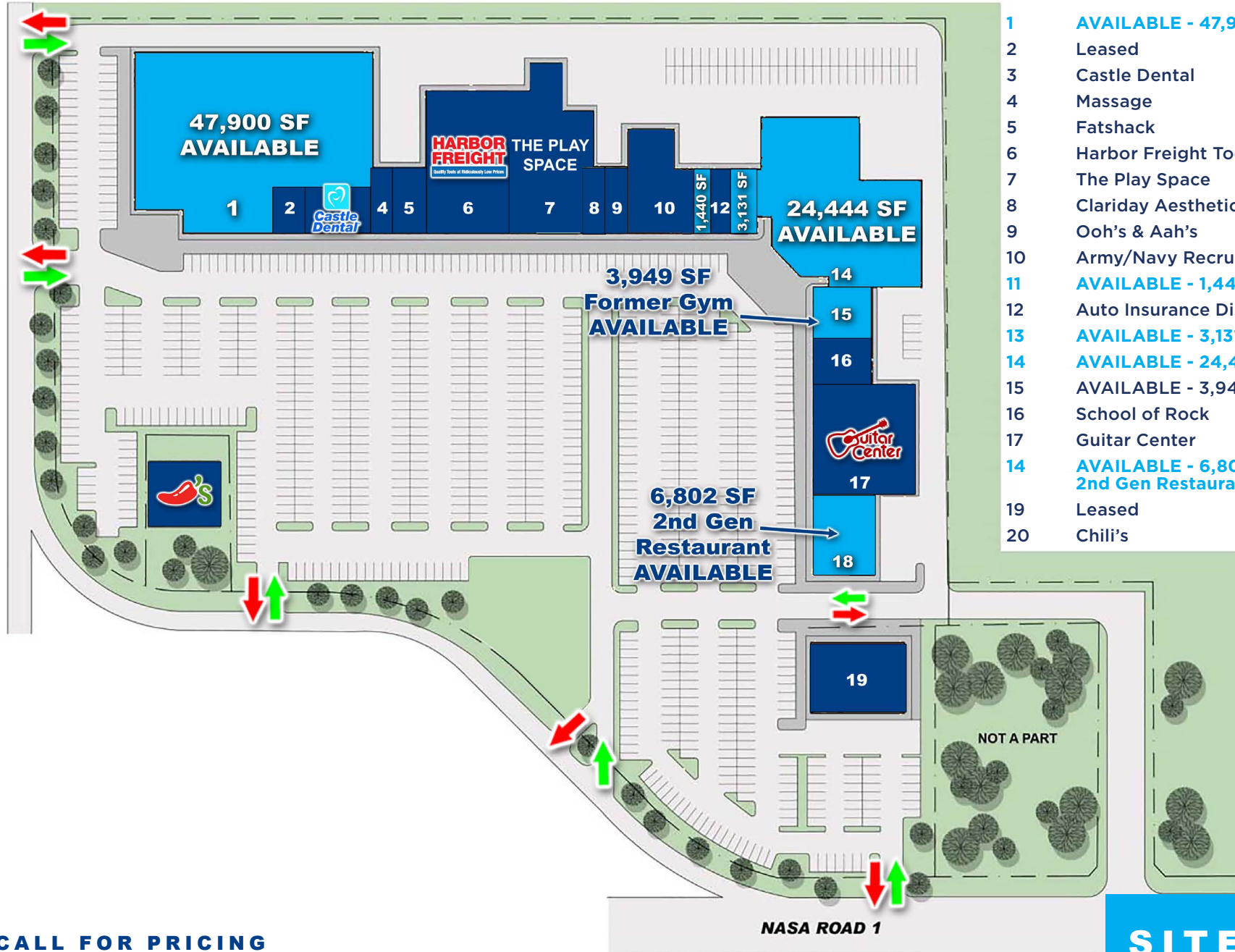


Avg. HH Income

1 mile	\$65,208
3 mile	\$88,482
5 mile	\$114,966

POINT NASA

INTERSTATE HIGHWAY 45



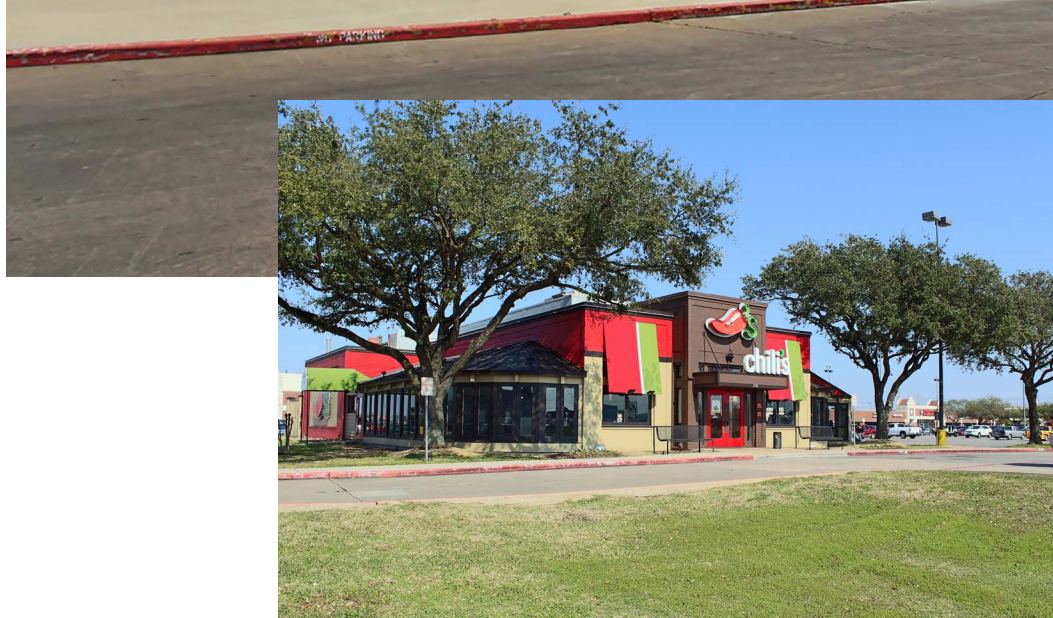
- 1 AVAILABLE - 47,900 SF
- 2 Leased
- 3 Castle Dental
- 4 Massage
- 5 Fatshack
- 6 Harbor Freight Tools
- 7 The Play Space
- 8 Clariday Aesthetics
- 9 Ooh's & Aah's
- 10 Army/Navy Recruiting
- 11 AVAILABLE - 1,440 SF
- 12 Auto Insurance Discounters
- 13 AVAILABLE - 3,131 SF
- 14 AVAILABLE - 24,444 SF
- 15 AVAILABLE - 3,949 SF
- 16 School of Rock
- 17 Guitar Center
- 14 AVAILABLE - 6,802 SF 2nd Gen Restaurant
- 19 Leased
- 20 Chili's

1020 W NASA RD 1 - WEBSTER, TEXAS 77598

CALL FOR PRICING

SITE PLAN

POINT NASA



1020 W NASA RD 1 - WEBSTER, TEXAS 77598

PHOTOS

POINT NASA



1020 W NASA RD 1 - WEBSTER, TEXAS 77598

POINT NASA



Baybrook Mall

- DICK'S
- KREI
- STAR CINE MAUI
- The Container Store

Baybrook Mall

- Dillard's
- sears
- macy's
- JCPenney

Baybrook Square

- rack
- Office DEPOT
- Marshalls
- JOANN
- ROSS
- HomeGoods
- Durlington
- PETSMART
- DSW

38,898 VPD (79)

- AMF
- CARRABBA'S
- WORLD MARKET
- Party City
- BARNES & NOBLE

HOBBY LOBBY

- BED BATH & BEYOND
- bel
- Stain Mart

SITE

22,196 VPD (79)

26,678 VPD (79)

- at home
- PAPPA'S

56,673 VPD (79)

- BIG LOTS
- FITNESS CONNECTIONS
- CINEMARK
- McALISTERS
- MINI PAZ
- Cherry's
- MAIN EVENT
- Cheddar's

FUTURE MIXED-USE DEVELOPMENT

1020 W NASA RD 1 - WEBSTER, TEXAS 77598