

# For Sublease

19220 SE Mcloughlin

3,600 RSF Available



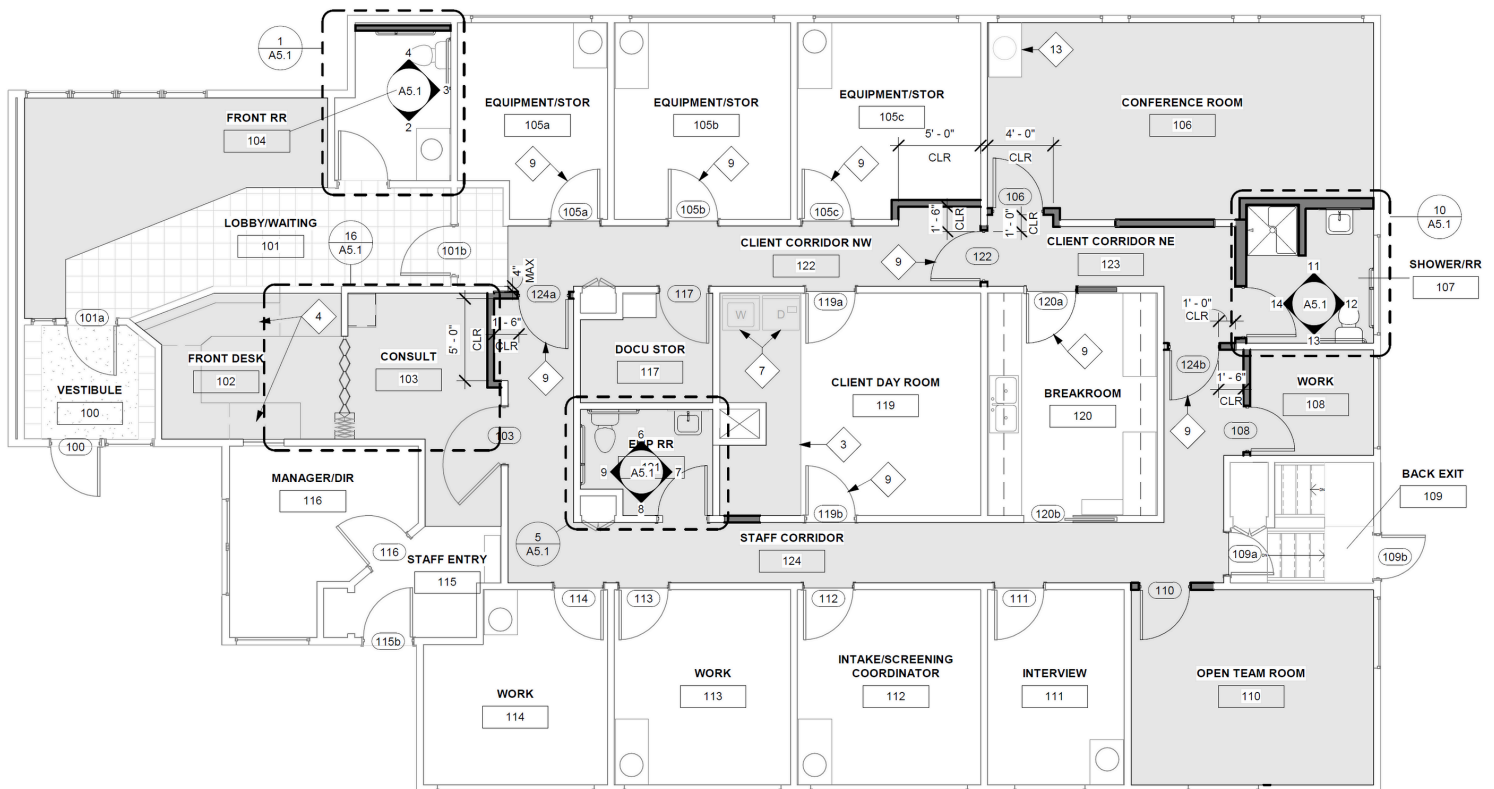
## Building highlights

- \$25/sf NNN
- Sublease opportunity
- Available through 8/30/2028
- Ample parking on-site
- Built out for medical or traditional office
- Mix of private offices & treatment rooms
- Conference room, kitchen and storage
- Exterior signage available

Available for sublease

**3,600 RSF**

**1st floor**



Prime medical space: fully renovated in 2016, high-visibility location with ready-to-use reception, offices, and treatment rooms. Occupancy available through August 2028.

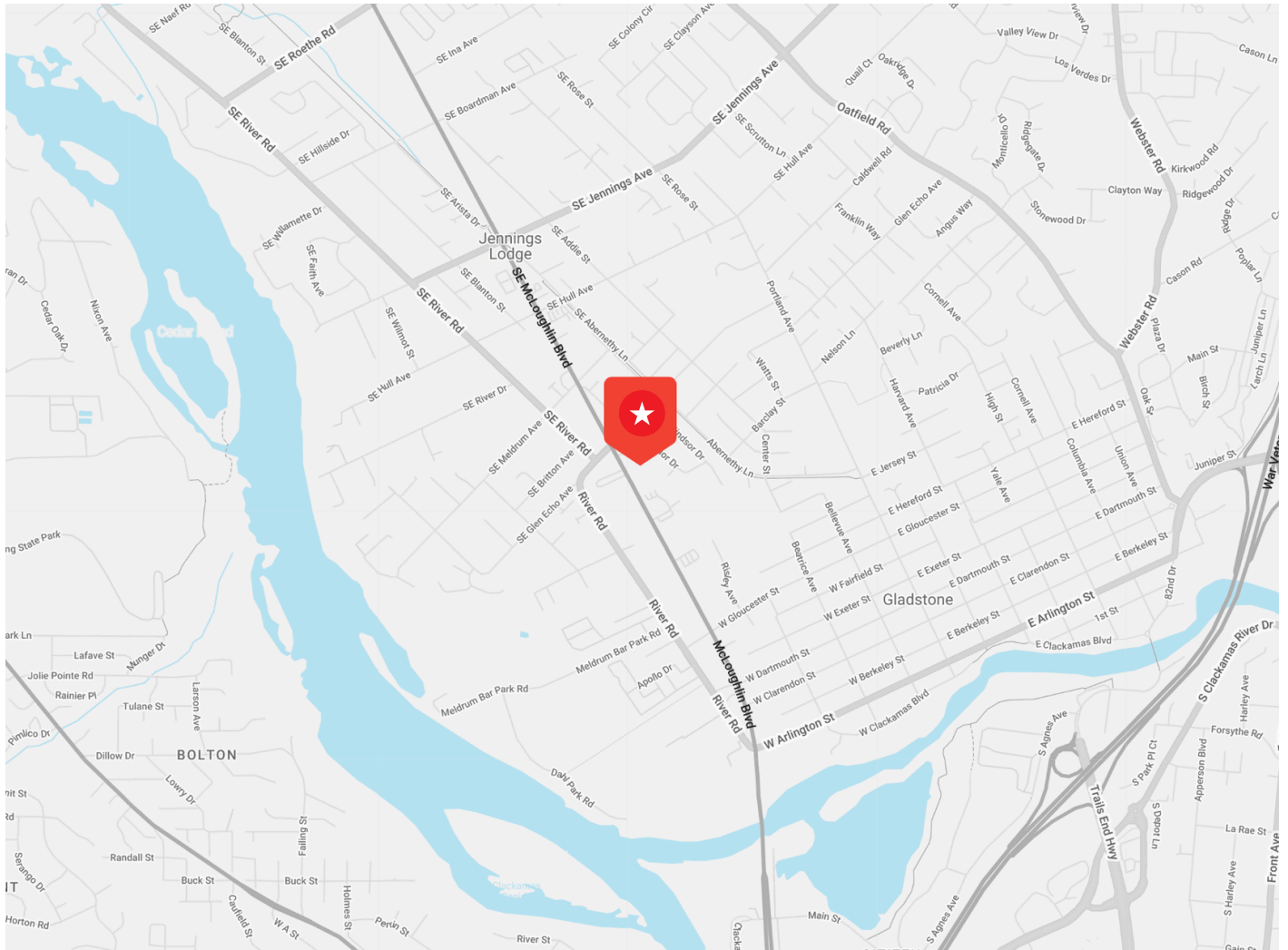




SEE A BRIGHTER WAY

19220 SE Mcloughlin  
Gladstone, OR

Prime location on SE Mccloughlin boulevard with high visibility signage and nearby restaurants.



## Jake Lancaster

Sr. Managing Director  
jake.lancaster@jll.com  
+1 503 972 8612

jll.com

Jones Lang LaSalle Brokerage, Inc.