

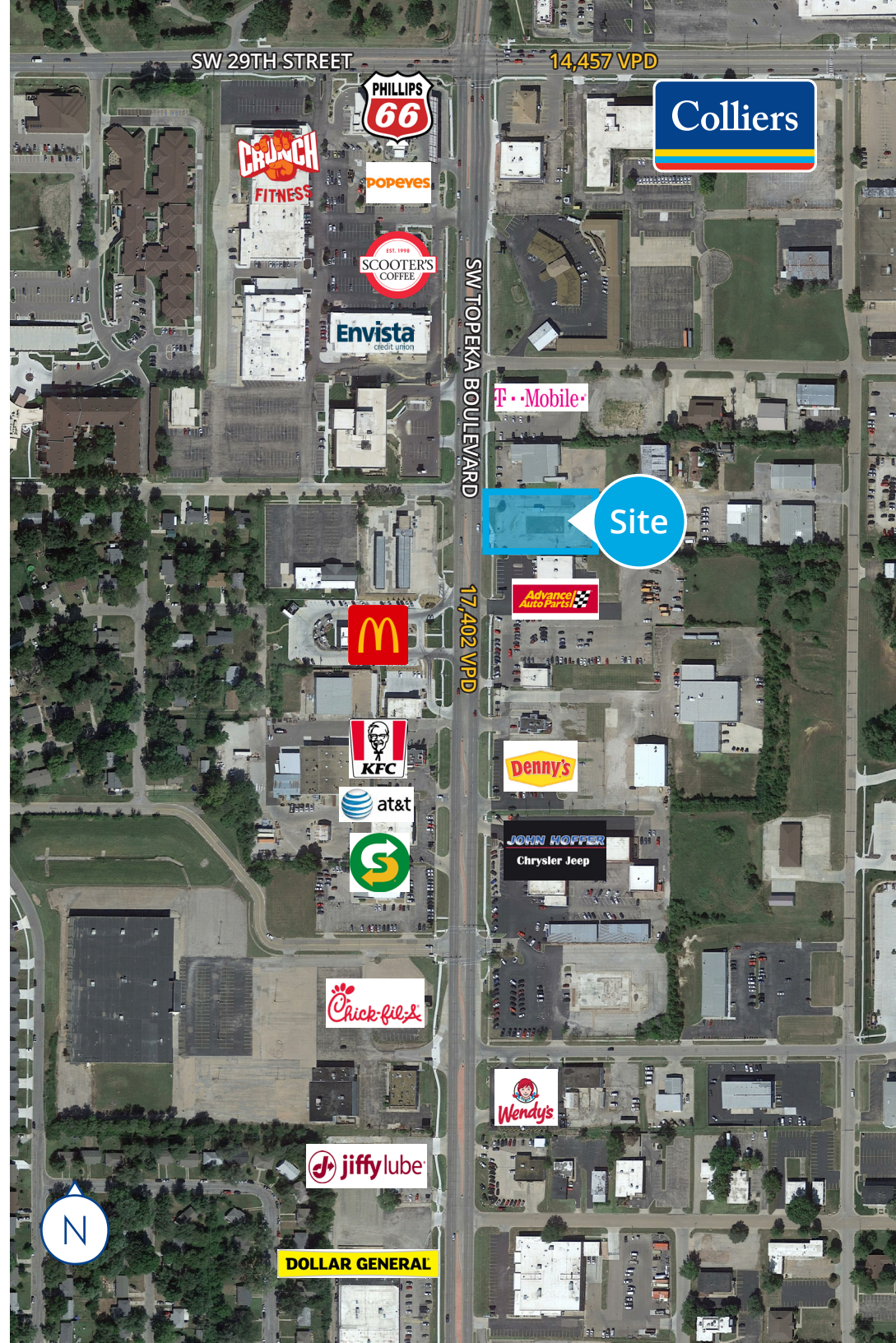
3110 SW Topeka Boulevard Topeka, Kansas

For Lease

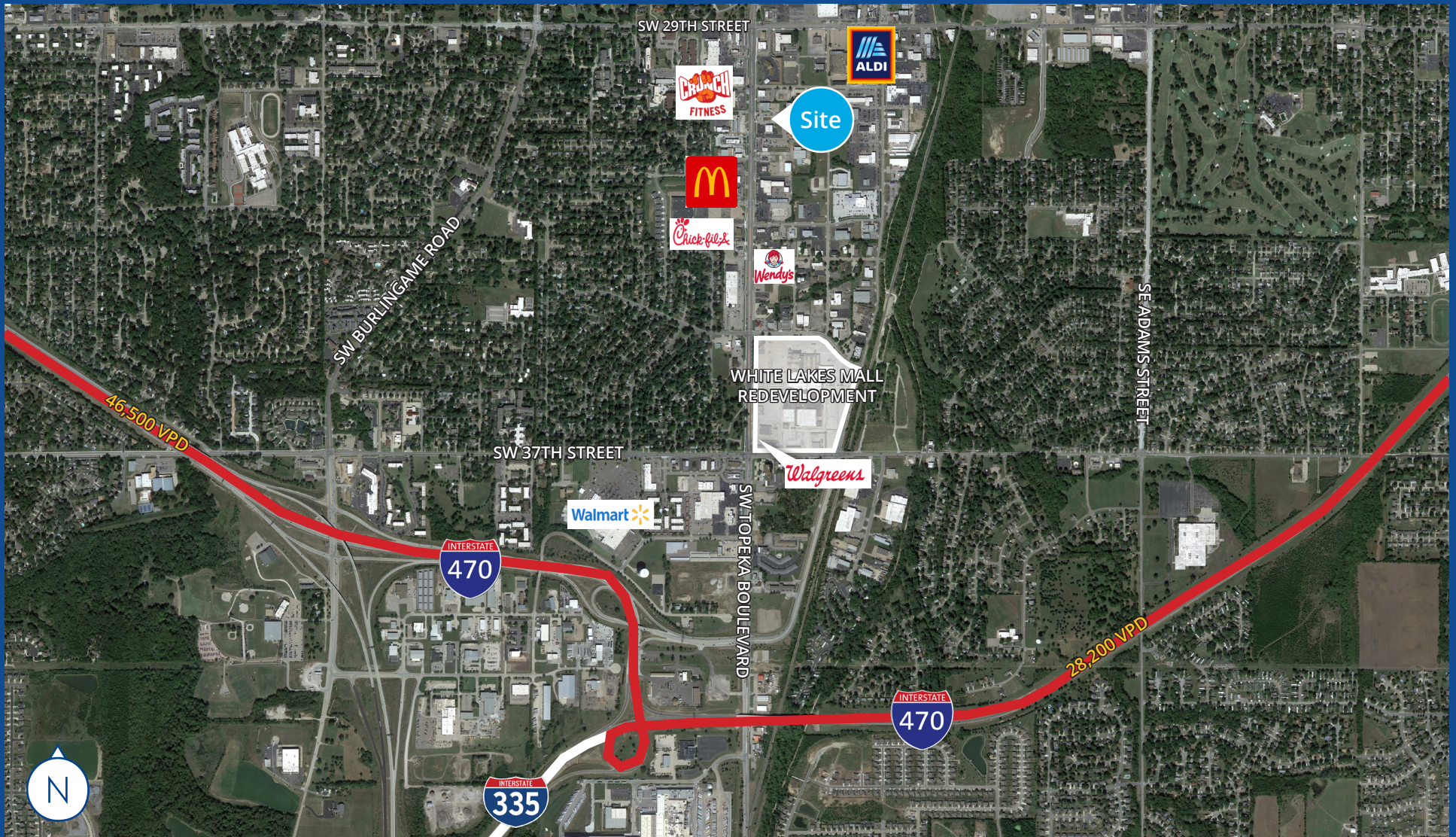
Property Features:

- 36,948 SF (0.84+/- acres)
- Prime land perfect for restaurant or medical use
- Great visibility with more than 17,400 VPD on SW Topeka Boulevard
- Immediate access near 29th Street & Topeka Boulevard
- Full ingress and egress
- Minutes from I-70

2025 Demographics	1 MILE	3 MILE	5 MILE
Population	7,577	68,997	127,112
Average Household Income	\$65,757	\$74,815	\$80,135
Daytime Population	9,174	82,816	150,023
Median Age	37.9	36.9	39.1



For Lease | 3110 SW Topeka Boulevard, Topeka, Kansas



This document/email has been prepared by Colliers for advertising and general information only. Colliers makes no guarantees, representations or warranties of any kind, expressed or implied, regarding the information including, but not limited to, warranties of content, accuracy and reliability. Any interested party should undertake their own inquiries as to the accuracy of the information. Colliers excludes unequivocally all inferred or implied terms, conditions and warranties arising out of this document and excludes all liability for loss and damages arising there from. This publication is the copyrighted property of Colliers and /or its licensor(s). ©2025. All rights reserved. This communication is not intended to cause or induce breach of an existing listing agreement.

Chris Newkirk
Vice President
+1 816 556 1180
chris.newkirk@colliers.com

