



For further information contact:

Bob Anderson

336-768-4410

bob@freemancommercial.com



**Property Highlights**

Location: North Main Street  
Kernersville, NC

Parcel: 4.5 +/- AC

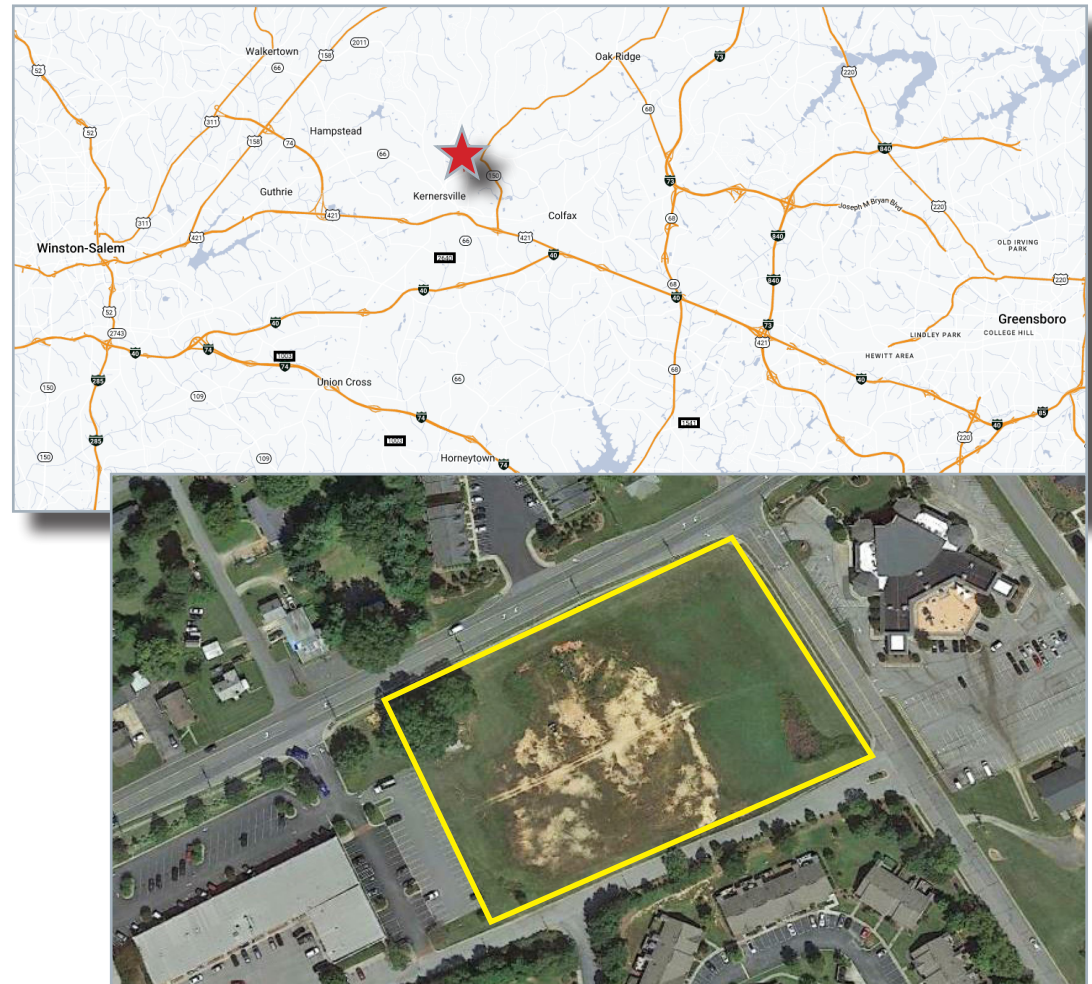
Zoning: LB-S

- New Macy Grove Interchange
- New residential and commercial growth
- Traffic Counts:  
North Main St. - 22,000 VPD
- Offered at \$350,000 per acre

**Demographics**

|                       | 3 Mile   | 5 Miles  | 7 Miles  |
|-----------------------|----------|----------|----------|
| 2021 Total Population | 26,374   | 58,192   | 101,735  |
| 2021 HH Income        | \$76,350 | \$84,226 | \$85,859 |
| 2021 Total Businesses | 1,633    | 2,324    | 3,433    |
| 2021 Total Employees  | 18,194   | 26,997   | 50,669   |

No warranty or representation is made to the accuracy of the information contained herein. All information is subject to change or withdrawal. No liability is assumed for any inaccuracy of any information.



For more information please contact:

**Bob Anderson**  
336-768-4410  
bob@freemancommercial.com