



FOR LEASE

4,000 SF Automotive/Warehouse For Lease

4605 S. Santa Fe Drive | Englewood, CO 80110



CONTACT:

BRAD GILPIN

SENIOR VICE PRESIDENT

303.512.1196

bgilpin@uniqueprop.com

UNIQUE PROPERTIES

400 S. BROADWAY

DENVER, CO 80209

(p) 303.321.5888

(f) 303.321.5889

WWW.UNIQUEPROP.COM



4605 S. SANTA FE DR.

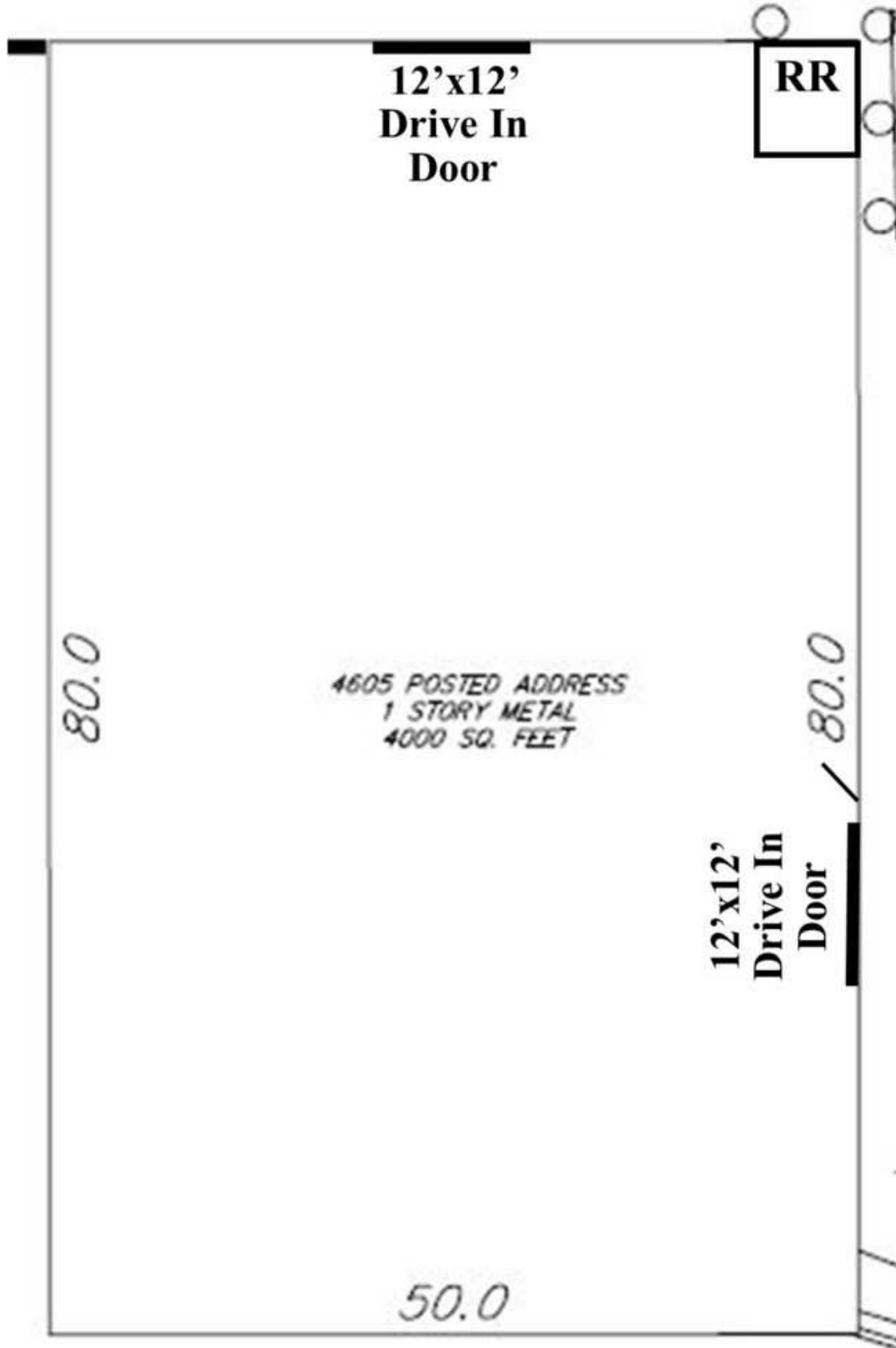
OFFERING SUMMARY

Lease Rate:	\$7,400/mth MG
City:	Englewood
County:	Arapahoe
Lot Size:	*21,214 SF
Grade Level Doors:	2 Total
Zoning:	I-1 Industrial

PROPERTY HIGHLIGHTS

- 4605 S. Santa Fe Drive
- 4,000 SF Automotive/Warehouse with two 12'x12 drive in doors, single restroom and floor drains
- Lease building 4605 for Just \$7,400/mth plus utilities
- Zoned I-1 in Englewood
- High traffic counts of 76,251 VPD (costar 2020 @ S. Santa Fe Dr. & W. Union Ave.)

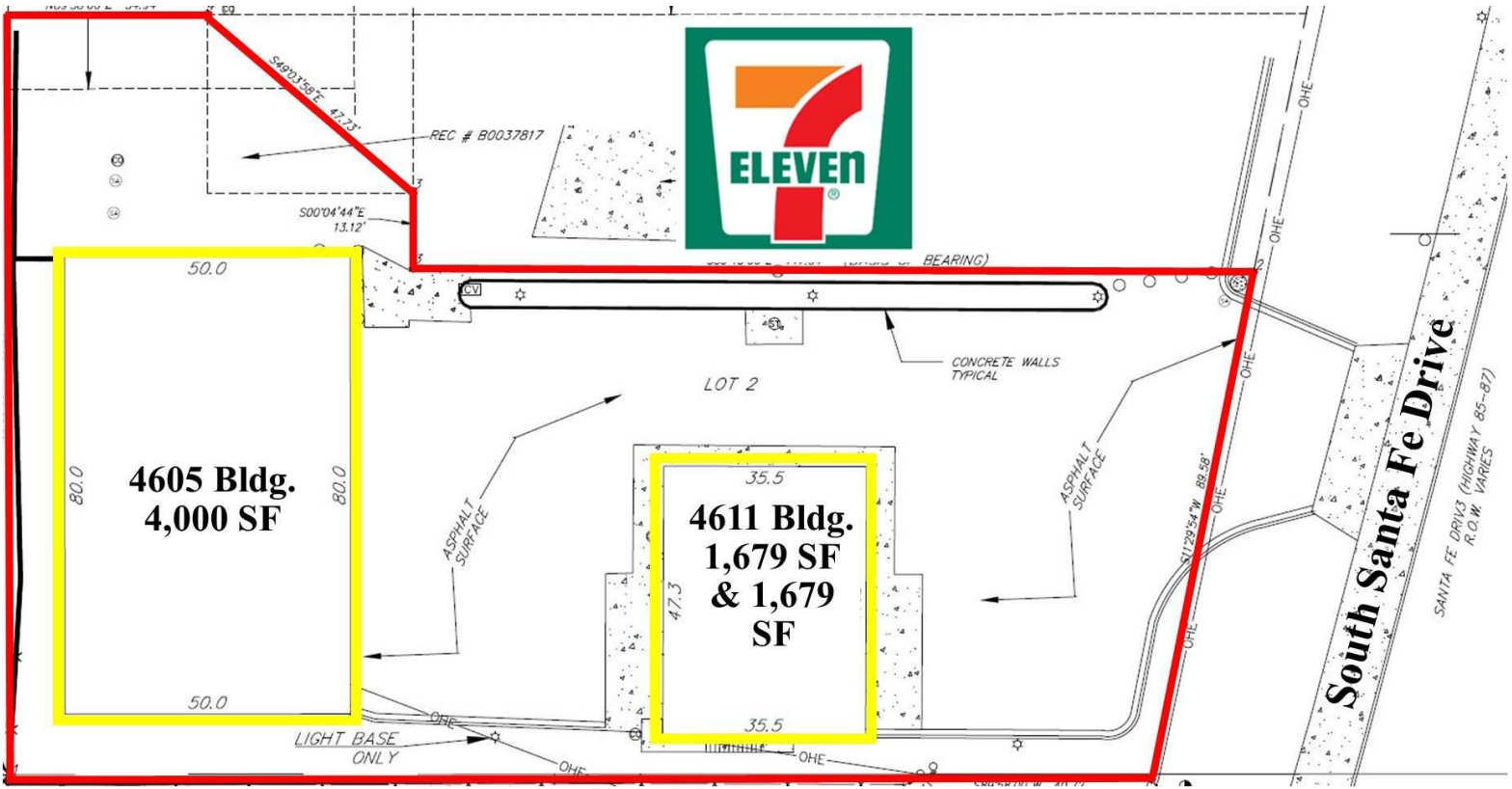
4,000 SF AUTOMOTIVE/WAREHOUSE FOR LEASE



4,000 SF AUTOMOTIVE/WAREHOUSE FOR LEASE



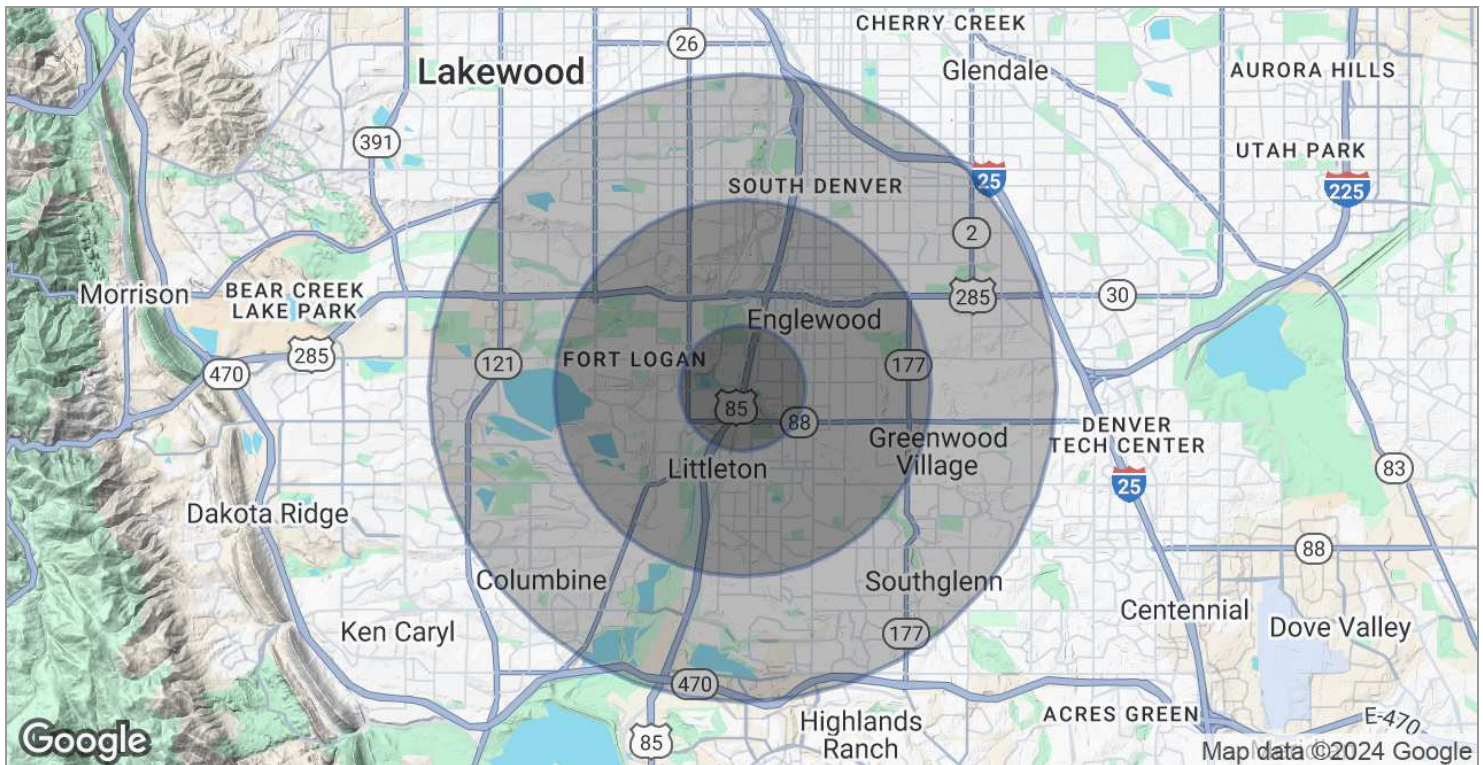
4,000 SF AUTOMOTIVE/WAREHOUSE FOR LEASE



4,000 SF AUTOMOTIVE/WAREHOUSE FOR LEASE

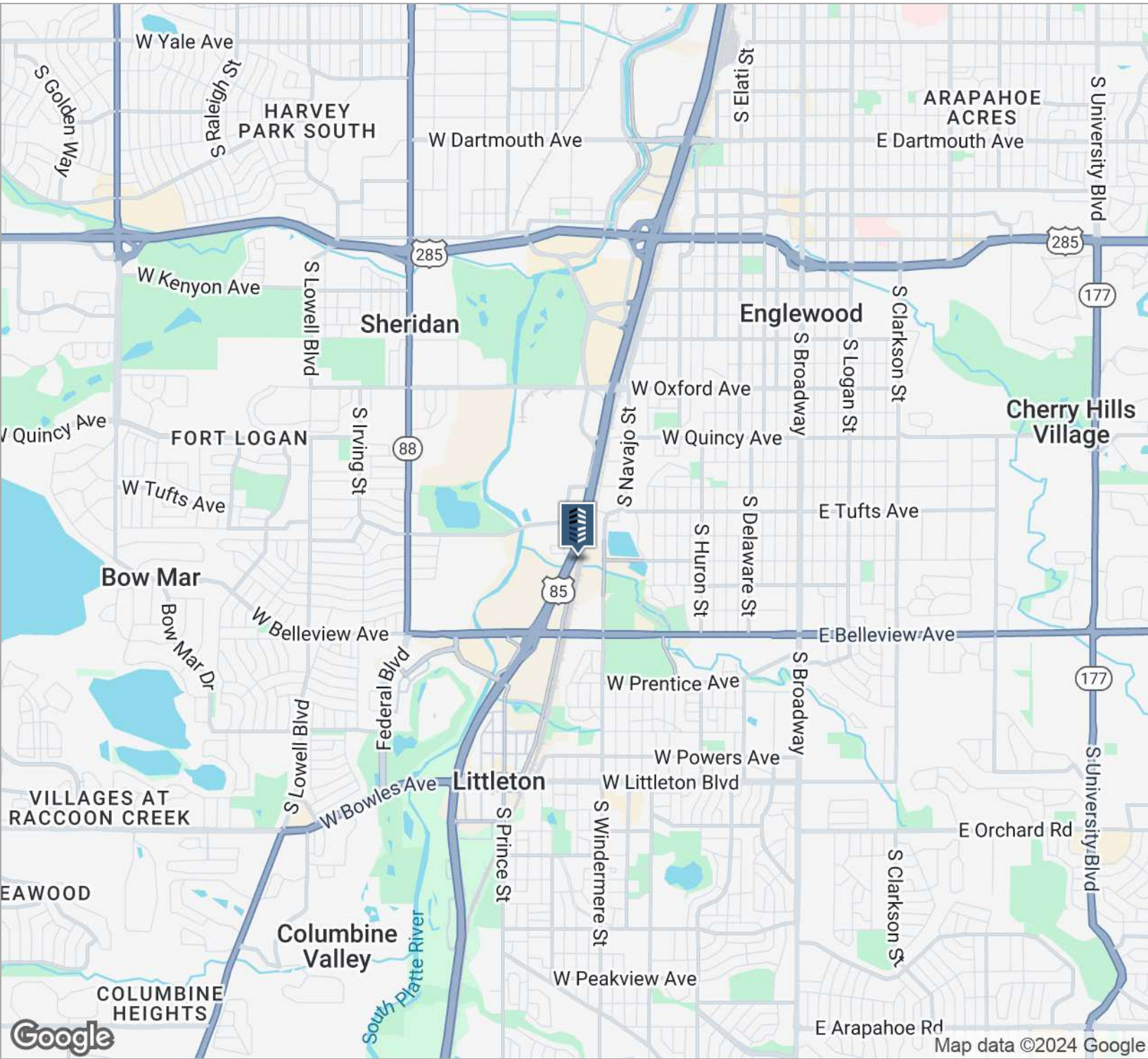
	1 MILE	3 MILES	5 MILES
Total households	4,716	42,753	113,382
Total persons per hh	2.3	2.3	2.5
Average hh income	\$49,759	\$62,137	\$76,515
Average house value	\$226,960	\$301,176	\$327,480

	1 MILE	3 MILES	5 MILES
Total population	10,672	100,048	280,081
Median age	35.5	37.8	37.5
Median age (male)	35.6	36.2	36.4
Median age (female)	36.2	39.8	39.0



* Demographic data derived from 2020 ACS - US Census

4,000 SF AUTOMOTIVE/WAREHOUSE FOR LEASE



CONTACT:

BRAD GILPIN
SENIOR VICE PRESIDENT
303.512.1196
bgilpin@uniqueprop.com

The information contained herein was obtained from sources believed reliable; however, Unique Properties makes no guarantees, warranties or representations as to the completeness or accuracy thereof. The presentation on this property is submitted subject to errors, omission, changes of price, or conditions, prior to sale or lease, or withdrawal without notice.