

FOR LEASE

±56,125 Sq. Ft. Free Standing Building
12930-12950 Alondra Blvd, Cerritos, CA 90703

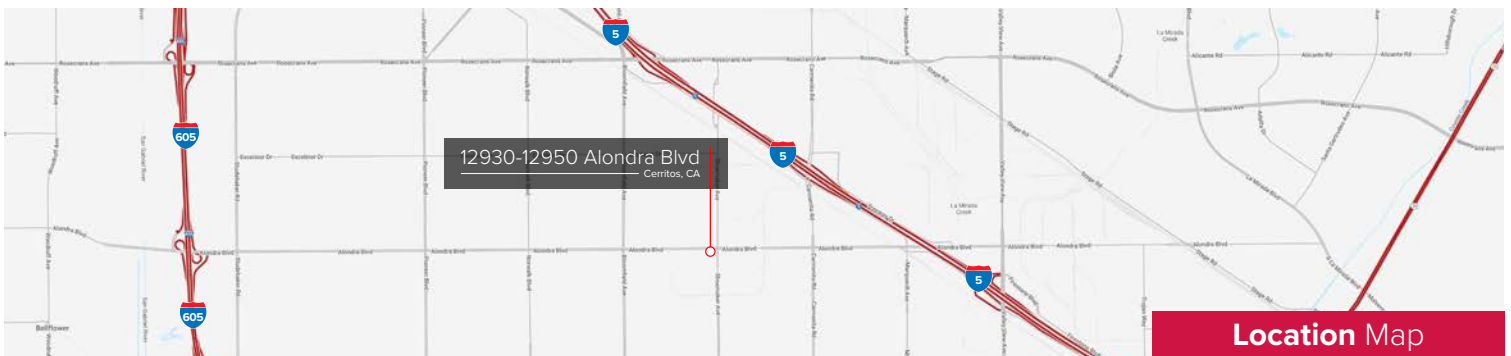


Property Highlights

- Prominent Identity Corner at Alondra & Shoemaker
- Great Corporate HQ Facility with Large Showroom
- 8 Dock High Positions / 23' Ceiling Clearance
- 0.33/3,000 GPM Fire Sprinkler
- Immediate Access to 5, 91, & 605 Freeways
- ±9,151 SF Office
- 66 Parking Spaces



Property Aerial



Location Map

LOCAL EXPERTISE. INTERNATIONAL REACH. WORLD CLASS.

Simon Chen, SIOR, CCIM
Senior Vice President | Lic ID # 019295748
P 562.568.2013
E schen@lee-associates.com

Michael Lee, MBA, CCIM, SIOR
Senior Vice President | Lic ID # 01703179
P 562.568.2018
E mlee@lee-associates.com

LEE & ASSOCIATES
COMMERCIAL REAL ESTATE SERVICES

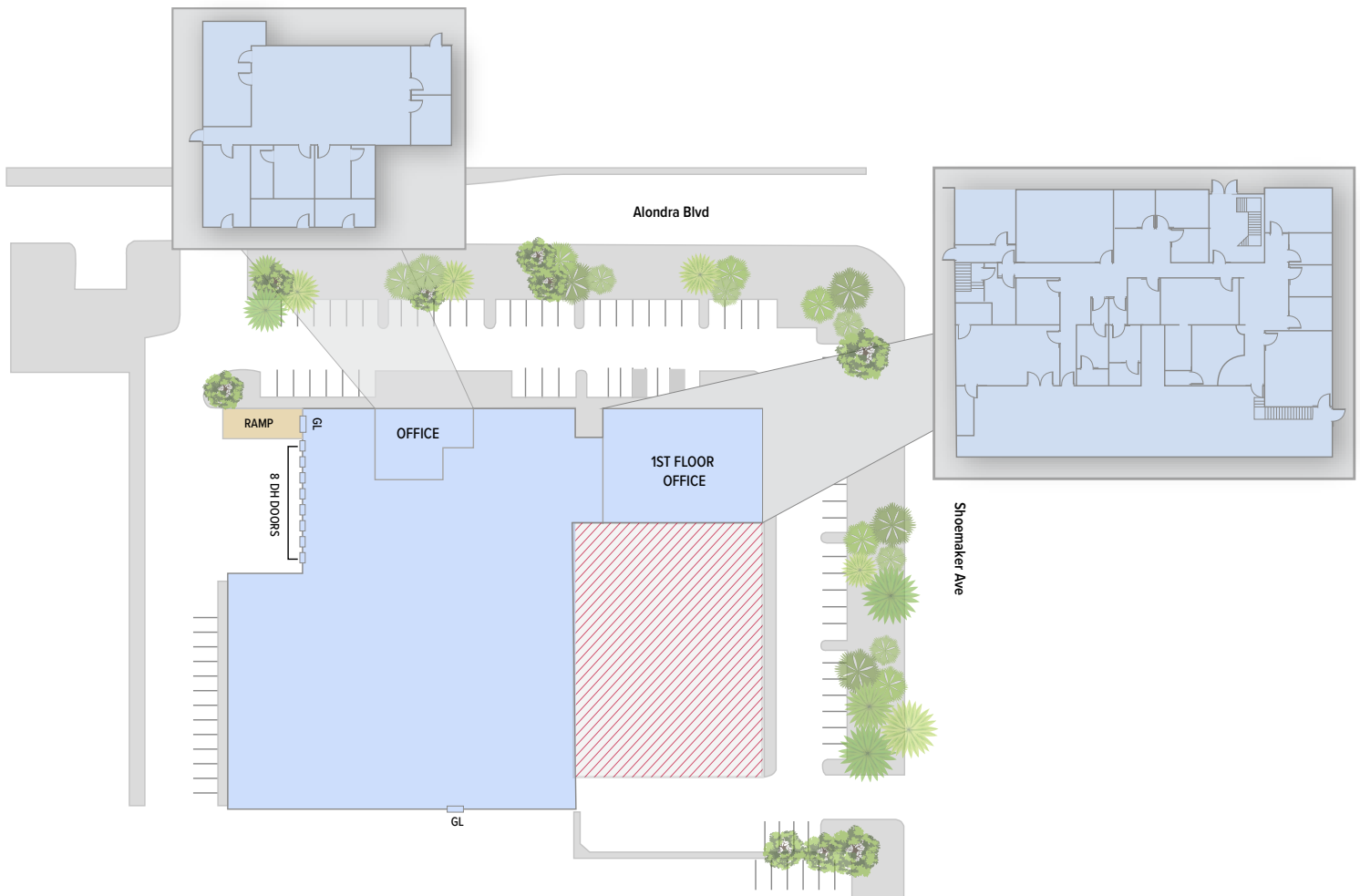


FOR LEASE

±56,125 Sq. Ft. Free Standing Building
12930-12950 Alondra Blvd, Cerritos, CA 90703

Site Plan

- Not to Scale / Not Exact



LOCAL EXPERTISE. INTERNATIONAL REACH. WORLD CLASS.

Simon Chen, SIOR, CCIM
Senior Vice President | Lic ID # 019295748
P 562.568.2013
E schen@lee-associates.com

Michael Lee, MBA, CCIM, SIOR
Senior Vice President | Lic ID # 01703179
P 562.568.2018
E mlee@lee-associates.com

LEE & ASSOCIATES
COMMERCIAL REAL ESTATE SERVICES



FOR LEASE

±56,125 Sq. Ft. Free Standing Building
12930-12950 Alondra Blvd, Cerritos, CA 90703

LEE & ASSOCIATES
COMMERCIAL REAL ESTATE SERVICES

Property Photos



LOCAL EXPERTISE. INTERNATIONAL REACH. WORLD CLASS.

Simon Chen, SIOR, CCIM
Senior Vice President | Lic ID # 019295748
P 562.568.2013
E schen@lee-associates.com

Michael Lee, MBA, CCIM, SIOR
Senior Vice President | Lic ID # 01703179
P 562.568.2018
E mlee@lee-associates.com

LEE & ASSOCIATES
COMMERCIAL REAL ESTATE SERVICES



FOR LEASE

±56,125 Sq. Ft. Free Standing Building
12930-12950 Alondra Blvd, Cerritos, CA 90703

Property Photos



LOCAL EXPERTISE. INTERNATIONAL REACH. WORLD CLASS.

Simon Chen, SIOR, CCIM
Senior Vice President | Lic ID # 019295748
P 562.568.2013
E schen@lee-associates.com

Michael Lee, MBA, CCIM, SIOR
Senior Vice President | Lic ID # 01703179
P 562.568.2018
E mlee@lee-associates.com




LEE & ASSOCIATES
COMMERCIAL REAL ESTATE SERVICES

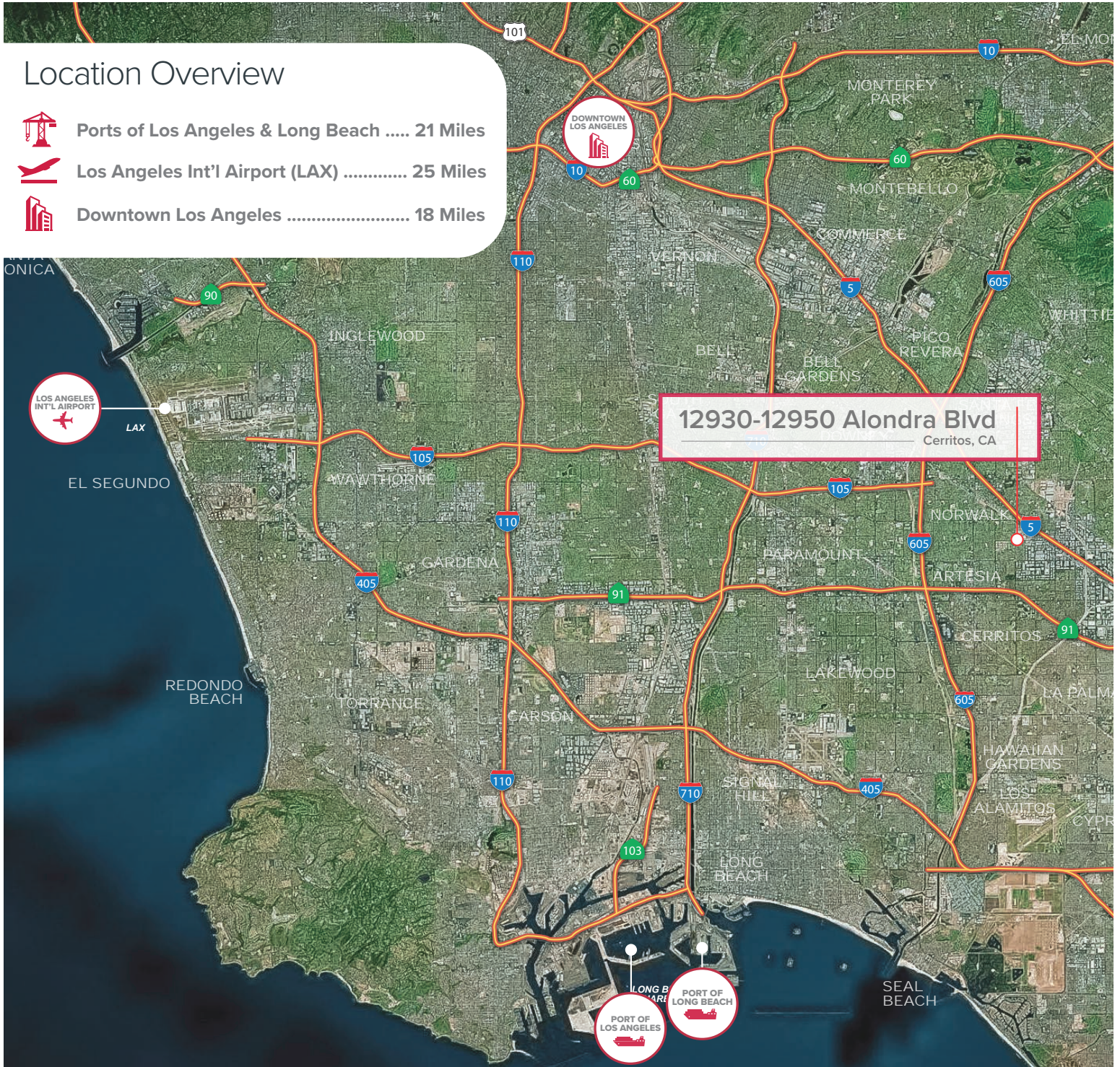


FOR LEASE

±56,125 Sq. Ft. Free Standing Building
12930-12950 Alondra Blvd, Cerritos, CA 90703

Location Overview

-  Ports of Los Angeles & Long Beach 21 Miles
-  Los Angeles Int'l Airport (LAX) 25 Miles
-  Downtown Los Angeles 18 Miles



LOCAL EXPERTISE. INTERNATIONAL REACH. WORLD CLASS.

Simon Chen, SIOR, CCIM
Senior Vice President | Lic ID # 019295748
P 562.568.2013
E schen@lee-associates.com

Michael Lee, MBA, CCIM, SIOR
Senior Vice President | Lic ID # 01703179
P 562.568.2018
E mlee@lee-associates.com

LEE & ASSOCIATES
COMMERCIAL REAL ESTATE SERVICES

TEAM LEE
LEE & ASSOCIATES