



# 2003 Wheless Lane

Austin, TX 78723



DOVETAIL

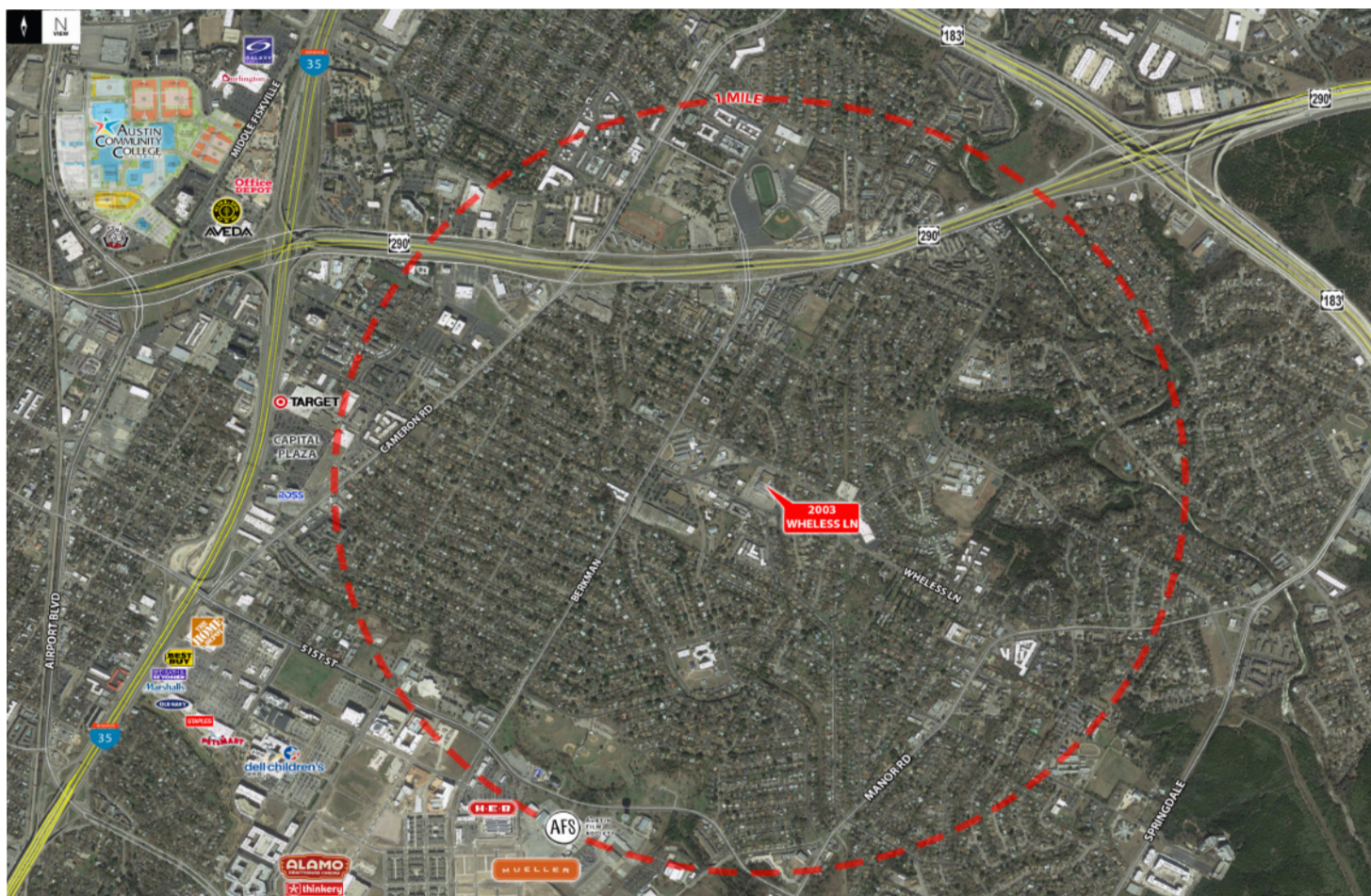
Michael Bullard • [mb@dovetailcre.com](mailto:mb@dovetailcre.com) • 512-468-5353



# 2003 Wheless Lane

Austin, TX 78723

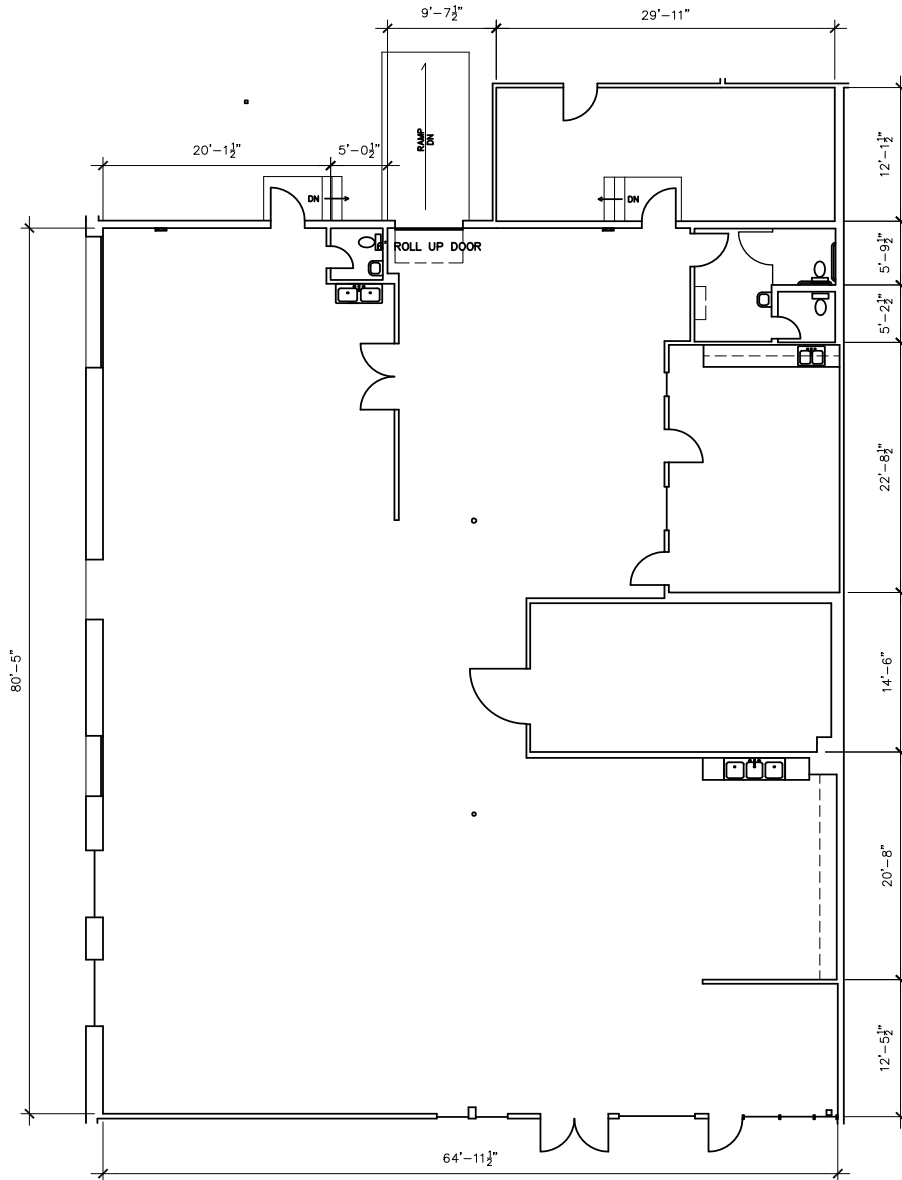
- For Lease
- 5,751 square feet with potential to demise
- 100% HVAC retail/office/warehouse
- Ample yard area
- 1.5 miles to Mueller
- 4 miles to the University of Texas
- Ample parking
- \$16.00/ RSF NNN. (Est. \$6.05 + E & J)



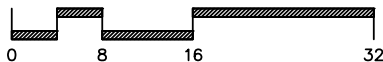


NOTES:

DIMENSIONS ARE TO SHOW ROOM SIZES.  
 SQUARE FOOTAGE CALCULATIONS ARE DONE  
 TO BOMA STANDARDS.



SCALE: 1/16" = 1'-0"



Drawing for:  
 CBRE, INC.  
 500 W. 2nd Street  
 Suite 1700  
 Austin, TX 78701

2003 WHELESS LANE  
 AUSTIN, TEXAS  
 RENTABLE AREA: 5,751 S.F.

THE MEASUREMENTS AND FLOOR  
 PLANS ARE ACCURATE USING BOMA  
 MEASUREMENT STANDARDS FOR  
 INDUSTRIAL BUILDINGS.  
 ANSI/BOMA Z65.2 - 2009  
 METHOD A  
 Project No.: 1856.05  
 Date: June 28, 2018  
 ©2018

**DIMENSIONS**  
 FLOOR PLANS

Austin, Texas  
 dimensionsfloorplans.com  
 Phone: (512)342-0114

