

# FORMER LATHRUP ACADEMY

## INFORMATION PACKAGE

27700 Southfield Road  
Lathrup Village, MI 48076



FOR LEASING INQUIRIES, CONTACT ROB KROCHMAL:  
248.867.3304 · [ROBK@SURNOW.COM](mailto:ROBK@SURNOW.COM)

# TABLE OF CONTENTS

Aerial	3
Topographical Survey	4
Current Site Plan	5
Floor Plan - Main Level	6
Floor Plan - Second Level	7
Floor Plan - Basement	8
Site Highlights	9
About The Surnow Company	10





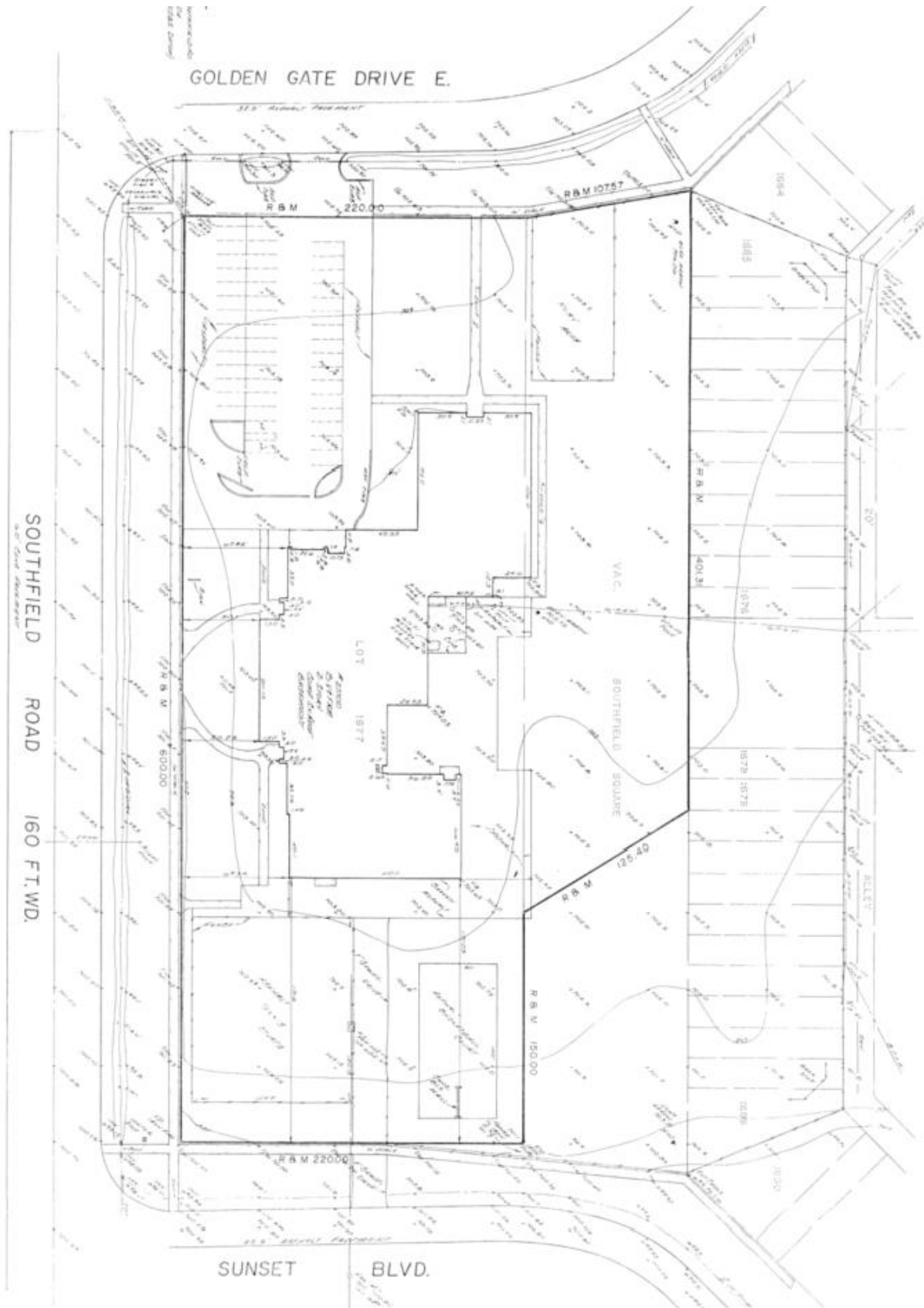
# AERIAL



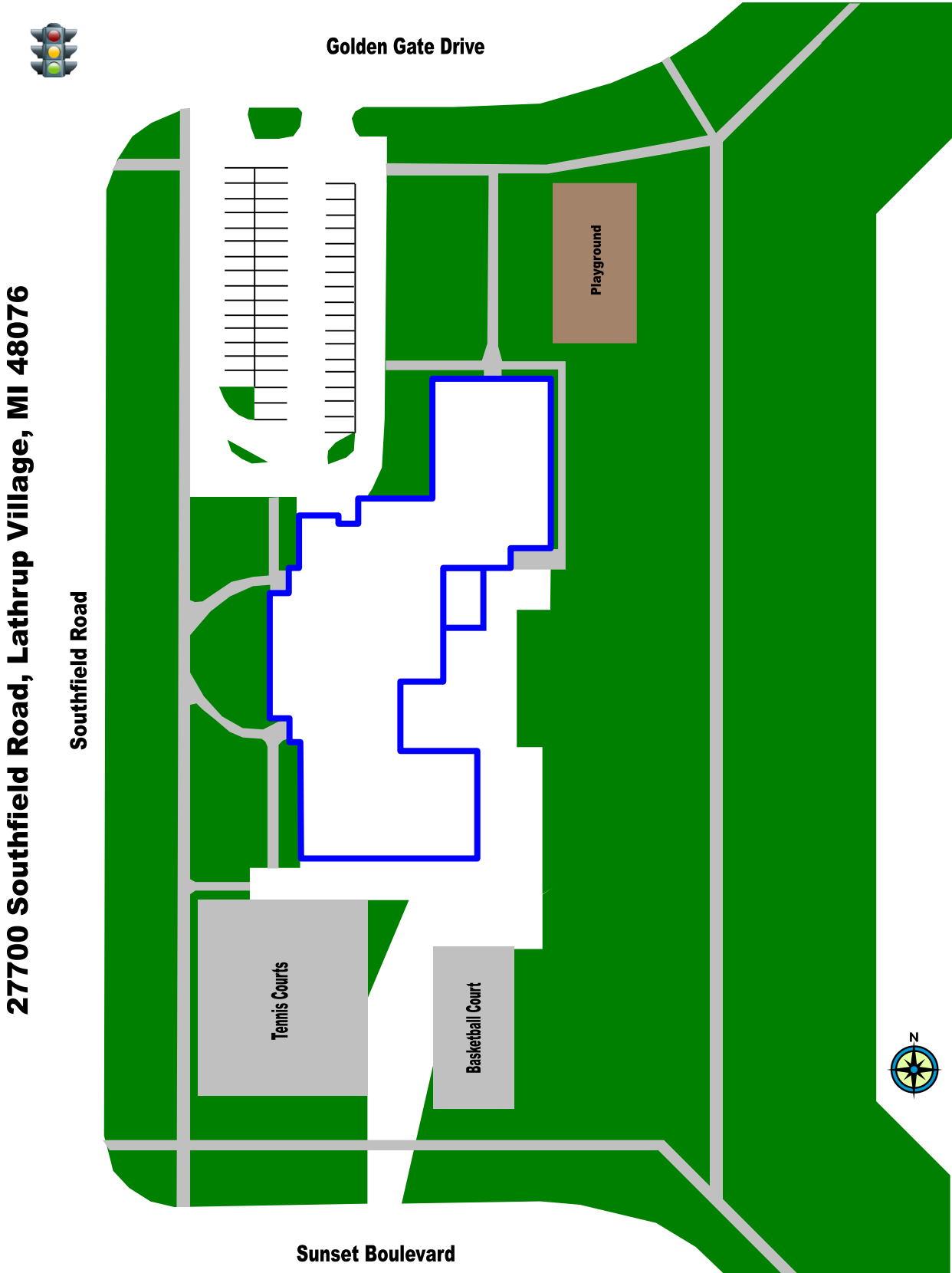
For leasing inquiries, contact Rob Krochmal:  
248.867.3304 · RobK@surnow.com



# TOPOGRAPHICAL SURVEY



# CURRENT SITE PLAN

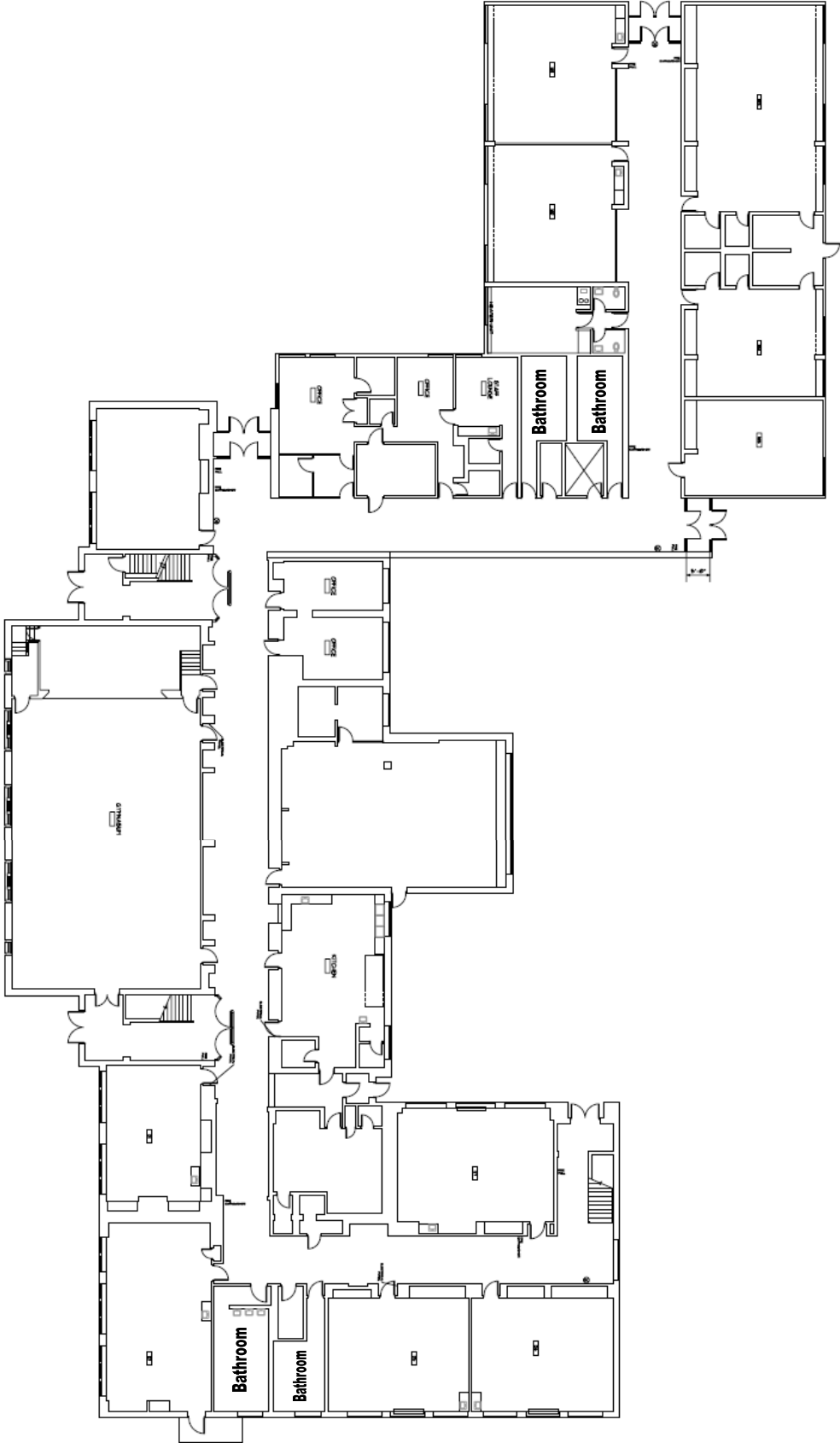


27700 Southfield Road, Lathrup Village, MI 48076



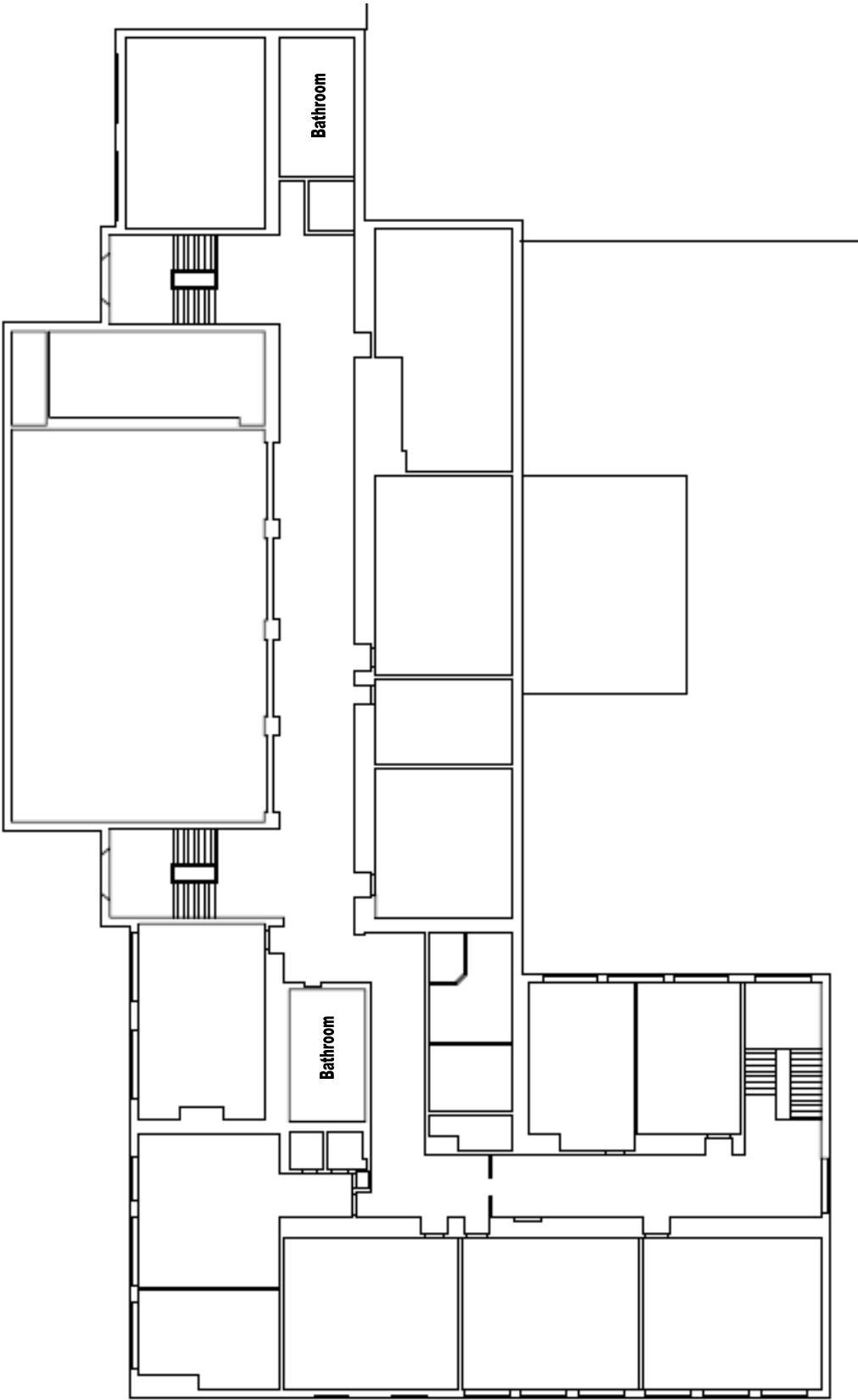
For leasing inquiries, contact Rob Krochmal:  
248.867.3304 · RobK@surnow.com

# FLOOR PLAN – MAIN LEVEL



Not to scale

# FLOOR PLAN – SECOND LEVEL

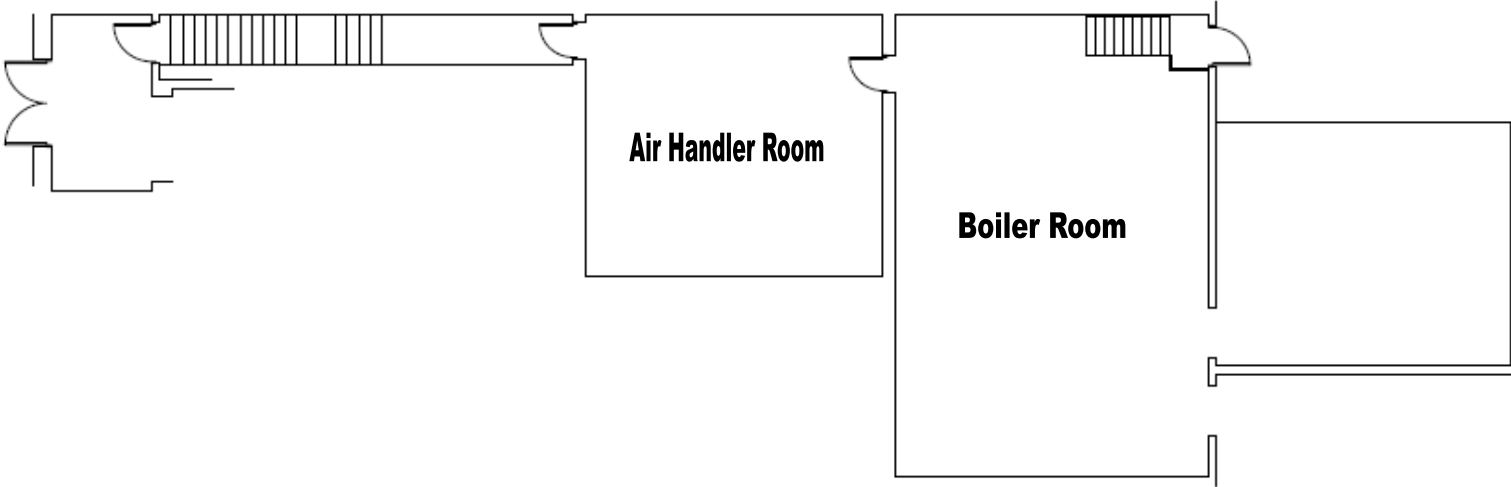


**Not to scale**



For leasing inquiries, contact Rob Krochmal:  
248.867.3304 · RobK@surnow.com

# FLOOR PLAN – BASEMENT

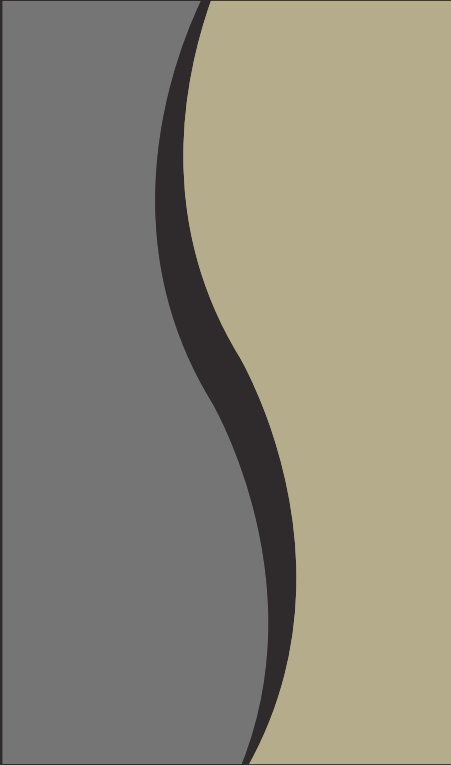


**Not to scale**



# SITE HIGHLIGHTS

- 46,086 cars pass this site each day
- Traffic light controlled intersection for easy ingress/egress and excellent site visibility
- Easily accessible by surrounding communities via Southfield Freeway and I-696
- Monument signage for excellent branding opportunity
- Inside Lathrup Village's City Center
- 22 existing classrooms, administrative offices, gymnasium with stage and basketball hoops, kitchen, and lunch room
- Large field for recess, activities, or patio space
- Land for modular classrooms or building additions to accommodate future expansion requirements
- Densely populated area with strong median incomes



## ABOUT US

The Surnow Company is Michigan's premier full service commercial real estate development, management, and brokerage firm. We have a focused specialty in repurposing and redeveloping urban and suburban retail, office, and medical properties to fulfill our tenants' needs, and to create greater value in the community each property is a part of.

Email or call today to discuss your commercial real estate needs, and we will proactively assist in achieving them.